

Drawing No: I44WPD14 C O I

I44WPD14 C O I

Date: 02/11/2015

Drawn By: SLF

Frame Size: 144

Sash Type: 45

Glazing: Internal

Unit: 14mm Unit

Frame Profile: Staff Bead

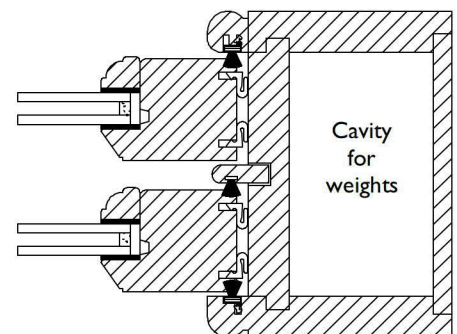
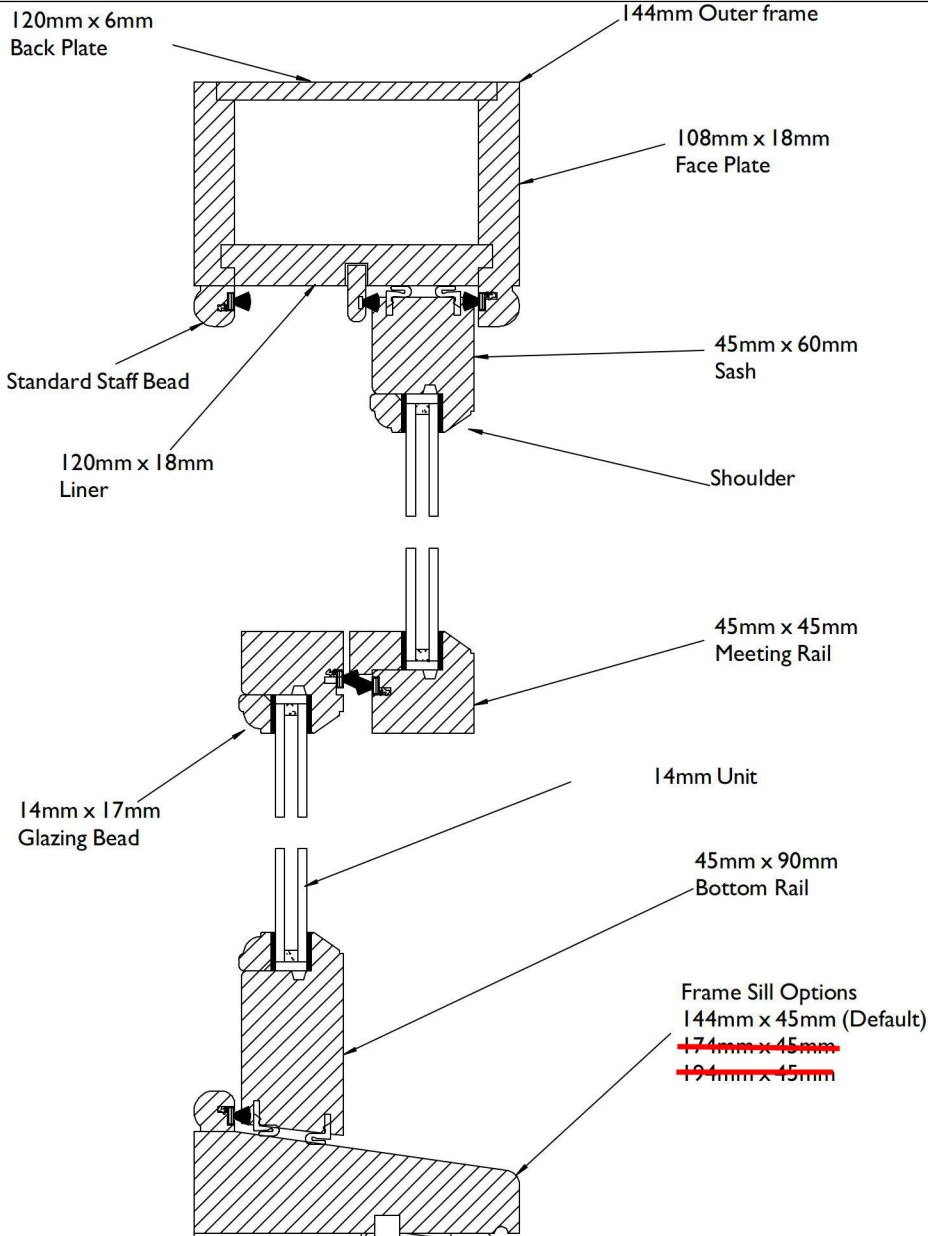
Shoulder: Chamfer

Glazing Bead: Ovolo

Ovolo

Stormproof: N/A

N/A



This drawing is copyright of Altus Services Ltd. Duplication of this drawing is prohibited without written permission. Due to continual development and improvement of design, Altus Services Ltd reserve the right to change any details.



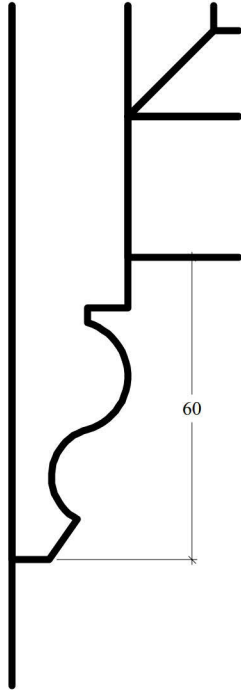
Sash Horn Styles

Date 16/01/2021

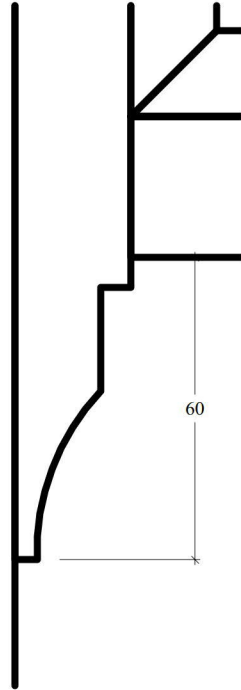
Drg No. As title

Drawn By SF

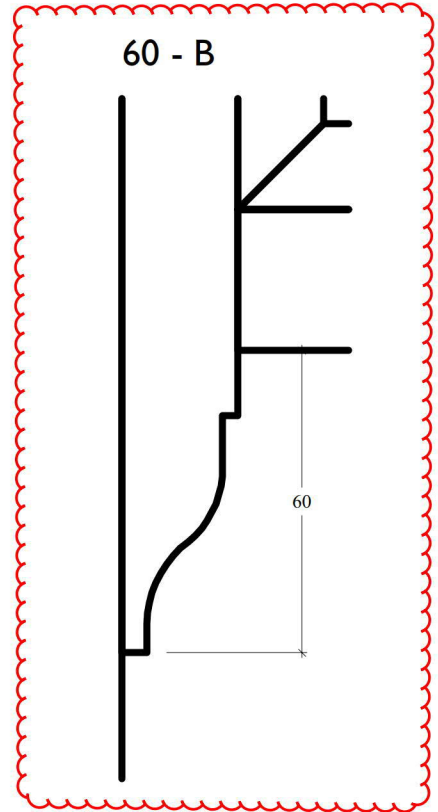
60 - I *



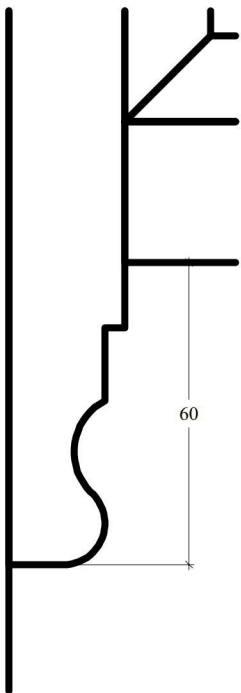
60 - A



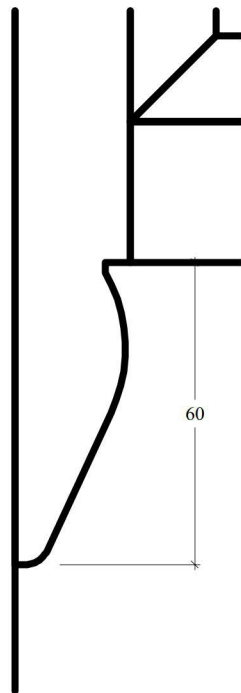
60 - B



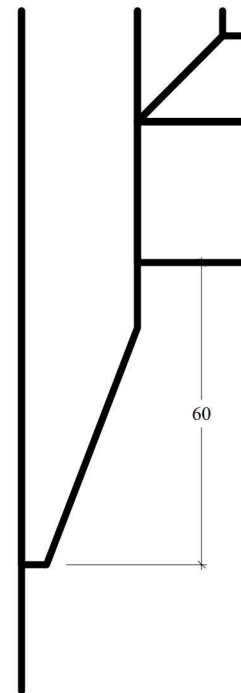
60 - C *



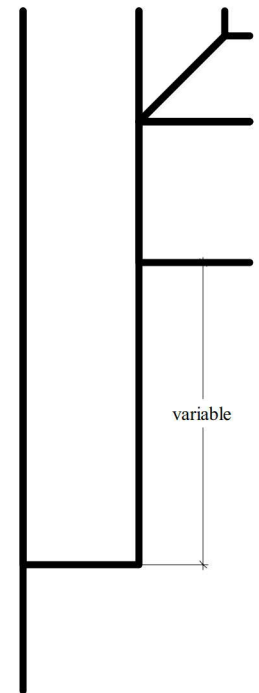
60 - D



60 - E



60 - F



The above are our standard horns

We can make any style of horn to match existing for a surcharge.



This drawing is copyright of Tradezone Windows Ltd. Duplication of this drawing is prohibited without written permission. Due to continual development and improvement of design, Tradezone Windows Ltd reserve the right to change any details.





SLIDING SASH FITTINGS

FITCH FASTENER *
Gold, ~~Chrome, Satin chrome~~
Locking and non-locking



Sash Lifts
Gold, ~~Chrome, Satin chrome, White~~
~~Black~~



Standard Sash Lock (Ventlock)
Gold, ~~Chrome, Satin chrome~~



Pulley Wheel
Gold, ~~Chrome, Satin chrome~~



Sash Ring Pull
Gold, ~~Chrome, Satin chrome~~



Information Sheet : Factory Glazing

STANDARD FACTORY GLAZING

All factory glazed jobs will be supplied and delivered to you as follows unless notified otherwise.

GLAZING

Openers - These will be fully glazed

Dummy sashes - These will be hung on friction hinges and temporary glazed

Fixed panes - These will be temporary glazed

DEFINITIONS

Fully glazed - All glass will be fitted, final capping off to be completed onsite.

Temporary Glazed - All glazing rebates, glazing beads, and astragal bars where applicable, will have the glazing tape applied. The glass will be in the opening and held in place with the glazing bead temporarily fixed, and the astragal bars scribed and fitted to the glass with temporary tape. These will need to be removed and site glazed. Any site glazing to be carried out as per our glazing guide.

OPTIONS

Dummy sashes - They can be factory glazed at no extra cost

These are hung on friction hinges as standard. The friction hinges are normally placed to enable the dummy to be fitted onsite through the adjoining rebate. This means the dummies can nearly always be factory glazed. We need to be advised if you require all or any of the dummies factory glazed when the acknowledgement is signed off at the latest.

Fixed panes - They can be factory glazed at no extra cost

As these are fixed, factory glazing them can make fitting difficult as you may need to fix through the glass rebate. If you require these to be factory glazed however we can do this at no extra cost. We need to be advised if you require all or any of the fixed panes to be factory glazed when the acknowledgement is signed off at the latest.

FACTORY GLAZING EXAMPLES

Standard factory glazing

All opening sashes fully factory glazed, dummies and fixed panes temporary glazed

Free dummy upgrade

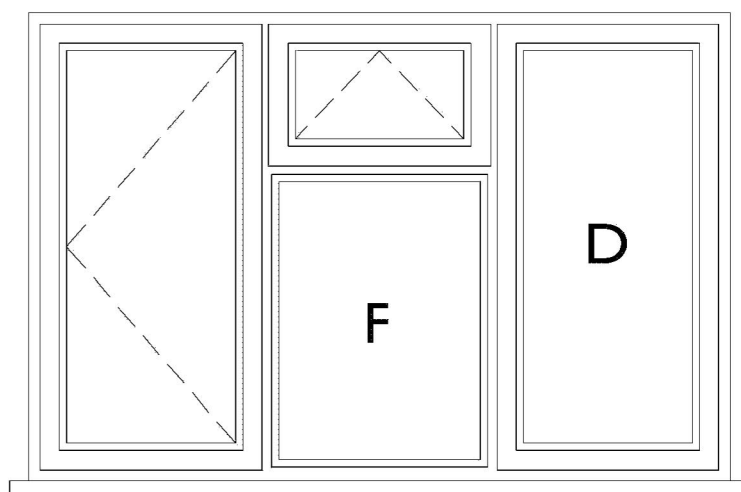
All opening sashes and dummies factory glazed, fixed panes temporary glazed

Free dummy and fixed upgrade

All opening sashes, dummies and fixed panes factory glazed.

Free custom upgrade

Your choice of which opening sashes, which dummy sashes and which fixed panes are factory glazed, and which are temporary glazed



Information Sheet :

Controlling timber movement

Timber Movement

The movement of timber in service is inevitable, but something that Tradezone aim to reduce as much as possible by careful design and manufacturing. There are however factors that are beyond the control of Tradezone that can lead to excessive timber movement

Timber Moisture Content

Timber is checked for moisture content throughout the whole manufacturing process and are supplied to site at between 14% +/- 2%.

The moisture content of timber changes constantly with variations in the ambient temperature and relative humidity. As the timber moisture content changes it can swell or shrink accordingly producing a dimensional change in the timber section. The degree of dimensional change varies from species to species, but as a rule of thumb timber dimensions will vary by about 1% for every 3% change in timber moisture content. Our design incorporates and allows for this movement, what it does not allow for, is excessive moisture. Windows which are fitted in a building site environment, that is uncontrolled and unheated does mean that the moisture content can increase up to and exceeding 25% resulting in dimensional changes as large as 3-4% which could equate to more than 2.5mm.

Paint Finish

Whilst our products are factory finished using Tecknos paints and stains this does not mean they will not absorb excessive moisture. The paint finish is flexible enough to expand and contract with the normal movement of timber. It is also microporous allowing the wood to breathe

Avoiding Problems

To avoid problems on site, we recommend that relative humidity of around 22-55% be maintained. With new build properties and extensions subject to high moisture levels

from the construction process this means low level background heating combined with good ventilation, and in very high humidity the use of a de-humidifier until levels are stabilised. This process can sometimes take up to a year after the construction process has finished. Humidity control is one of the most important factors in controlling dimensional changes in timber windows and doors.

Responsibility

Dimensional change and problems in timber products resulting from improper relative humidity exposure during site storage and installation are the responsibility of the installer.

Dimensional change and problems in timber products resulting from humidity extremes after installation is the responsibility of the homeowner.

Tradezone cannot be held responsible for the environmental conditions in which the windows are installed.

Please note the following guidelines are to be taken following delivery of our products:

- ◆ Remove any shrink wrap before storing items to allow ventilation of all of our products. Condensation can build up on the inside of the wrapping causing increased humidity
- ◆ Store all of the joinery products off of the ground on suitable bearers
- ◆ Cover all of the joinery products not in use with a dust sheet. Plastics or other impermeable sheeting should be avoided unless well ventilated.
- ◆ Storage areas themselves should be well ventilated and not subject to extremes of temperature. Metal box containers and areas open to the elements should be avoided as these may be subject to condensation and large temperature changes.

GENERAL NOTES

General notes

1. Sizes are manufacturing dimensions, and all frames are viewed from the outside.
2. Vent arrows point to the hinge side, D indicates dummy sash. On double doors – S indicates the slave door.
3. Transom drops are from the outside of the frame (or frame extenders) to the centre of the transom.
4. Where frames are divided vertically, the frame rebates will be equalised and not the mullions centred, unless requested.
5. Door midrail heights are from the underside of the frame to the centre of the midrail, not from the underside of the sill.
6. All frame heights include the sill, and all sills have 100mm horns unless otherwise requested.
7. Trickle vents and fire escape hinges will not be included unless specifically requested by you and are shown on the quote.
8. Whilst every effort is made to correctly interpret all details, including leaded and georgian glass layouts, it is the customers responsibility to ensure that these details are correct. We cannot be held responsible for incorrect interpretations, please ask if in doubt
9. Bay, Bow and Conservatory frame prices are priced individually. The individual prices do not include sills and posts, these are in the extras at the end of the quote.
10. All frames are fully factory finished in the colour stated, unless otherwise stated.
11. Prices shown by individual windows are the NETT price and not to be discounted.
12. Due to continual development and improvement, we reserve the right to change specifications without prior notice.
13. *** NOT TECHNICALLY RECOMMENDED *** means a window or door frame is outside normal limits. Check with our sales office for details as usually these items are not guaranteed.
14. Add-ons will be not be included in this quote - please check our price guide for details.

BASIC DOOR TYPES

- * Stormproof Doors - These are a stormproof (rebated over the frame) design with 3D adjustable butt type hinges
- * Flush Doors - These are a flush design with traditional butt style hinges
- * Bifolding Doors - Up to 10 leaves wide

BASIC WINDOW TYPES

- * 69mm Stormproof Windows - These are a stormproof (rebated over the frame) design on friction hinges
- * 90mm Stormproof Windows - These are a stormproof (rebated over the frame) design on friction hinges or stormproof hinges
- * 69mm Flush Windows - These are a flush design on friction hinges
- * 90mm Flush Windows - These are a flush design on friction hinges or butt hinges
- * Sliding sashes - These can be weights ,pulleys, spiral balances or tilt and slide sashes
- * Mock Sashes - These look like a sliding sash but are standard windows hung on friction hinges, and have mock horns

GLASS AND GLAZING TERMINOLOGY

- * Unglazed - this means we do not supply the glass
- * Glazed - this means that we supply the glass for you to fit on site
- * Factory Glazed - this means that we supply the glass and fit it into the frames.

FINISHES

- * Spray Finish - this is our standard finish and is a 3 coat factory finish
- * Base coat only - Check guarantee details
- * No base coat - Check guarantee details
- * Oil Finish - This ia a cloth applied oil finish - Check guarantee details

FINISH TYPES

- * Standard Colour - this is our standard finish, the whole frame being the same colour
- * Special Colour - we can match any solid colour ie "Farrow and Ball", RAL, BS, any colour chart or sample paint.
- * Special Stain - matching a translucent colour is very difficult to achieve as there are so many blends of colours
- * 2 Tone - The inside and outside of the frames are a different colour, and can be a solid colour or a translucent stain.
- * 2 Tone Frames - Just the frames are different colour inside and out and can be a solid colour or a translucent stain.
- * 2 Tone Sashes - Just the sashes are different colour inside and out, and can be a solid colour or a translucent stain
- * Sash and Frame different colour - The sash and the frames are different colours and can be a solid colour or a translucent stain

TIMBER AVAILABLE (Other species can be supplied)

- * Engineered Softwood.
- * Solid Meranti (MTCC) is our standard solid dark red hardwood
- * Engineered Grandis (FSC) is our standard engineered red hardwood. (Stained jobs may show finger joints on the faces)
- * Engineered European Oak (FSC)