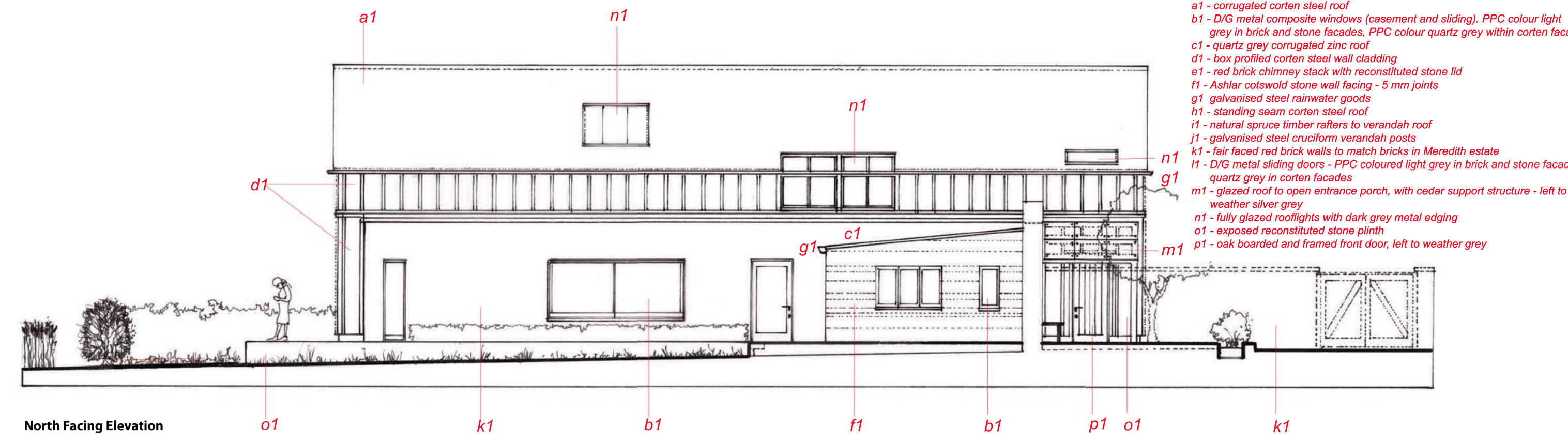


East Facing Elevation



North Facing Elevation

MATERIALS LIST

- a1 - corrugated corten steel roof
- b1 - D/G metal composite windows (casement and sliding). PPC colour light grey in brick and stone facades, PPC colour quartz grey within corten facades
- c1 - quartz grey corrugated zinc roof
- d1 - box profiled corten steel wall cladding
- e1 - red brick chimney stack with reconstituted stone lid
- f1 - Ashlar cotswold stone wall facing - 5 mm joints
- g1 galvanised steel rainwater goods
- h1 - standing seam corten steel roof
- i1 - natural spruce timber rafters to verandah roof
- j1 - galvanised steel cruciform verandah posts
- k1 - fair faced red brick walls to match bricks in Meredith estate
- l1 - D/G metal sliding doors - PPC coloured light grey in brick and stone facades quartz grey in corten facades
- m1 - glazed roof to open entrance porch, with cedar support structure - left to weather silver grey
- n1 - fully glazed rooflights with dark grey metal edging
- o1 - exposed reconstituted stone plinth
- p1 - oak boarded and framed front door, left to weather grey