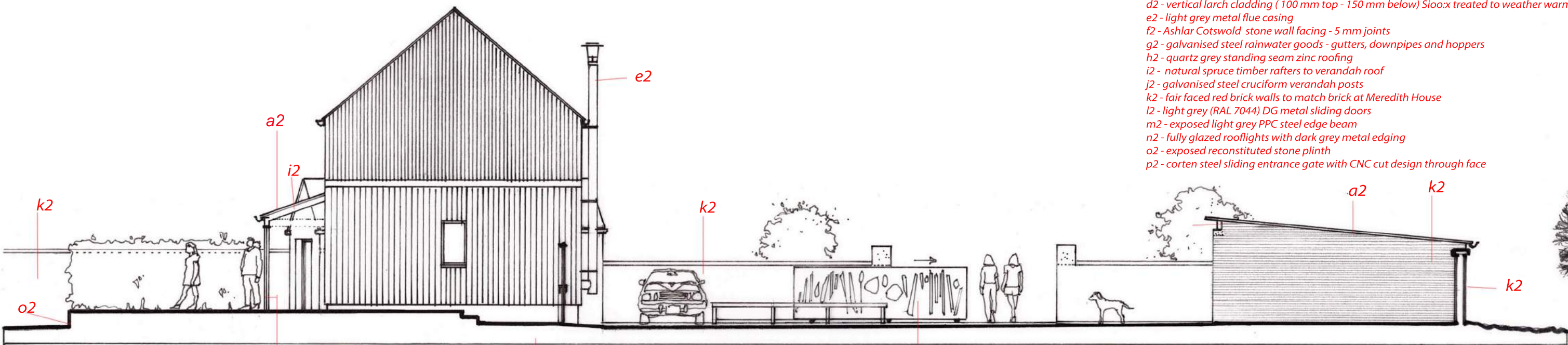


North Facing Elevation

MATERIALS

- a2 - quartz grey corrugated roof
- b2 - light grey (RAL 7044) DG metal windows (casement and sliding)
- c2 - corrugated corten steel roofing
- d2 - vertical larch cladding (100 mm top - 150 mm below) Sioox treated to weather warm silver grey
- e2 - light grey metal flue casing
- f2 - Ashlar Cotswold stone wall facing - 5 mm joints
- g2 - galvanised steel rainwater goods - gutters, downpipes and hoppers
- h2 - quartz grey standing seam zinc roofing
- i2 - natural spruce timber rafters to verandah roof
- j2 - galvanised steel cruciform verandah posts
- k2 - fair faced red brick walls to match brick at Meredith House
- l2 - light grey (RAL 7044) DG metal sliding doors
- m2 - exposed light grey PPC steel edge beam
- n2 - fully glazed rooflights with dark grey metal edging
- o2 - exposed reconstituted stone plinth
- p2 - corten steel sliding entrance gate with CNC cut design through face



East Facing Elevation