

Indicating proposed kurbside collection points.  
Proposed Collection Point for Units; 3,9,10.

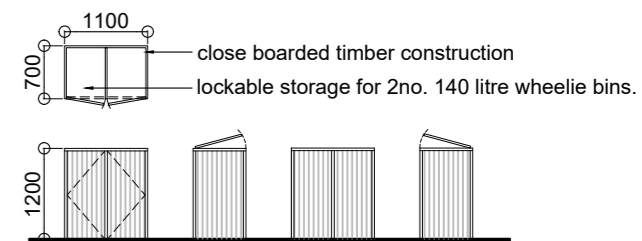
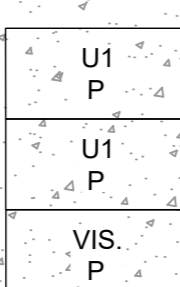
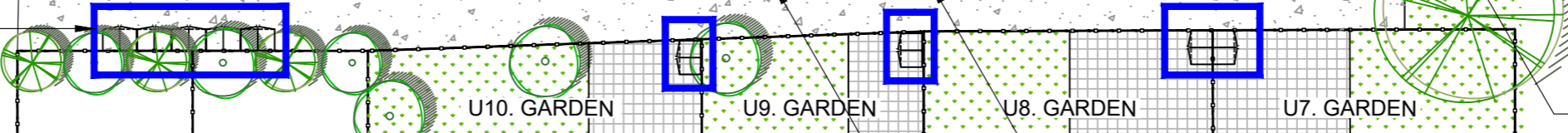
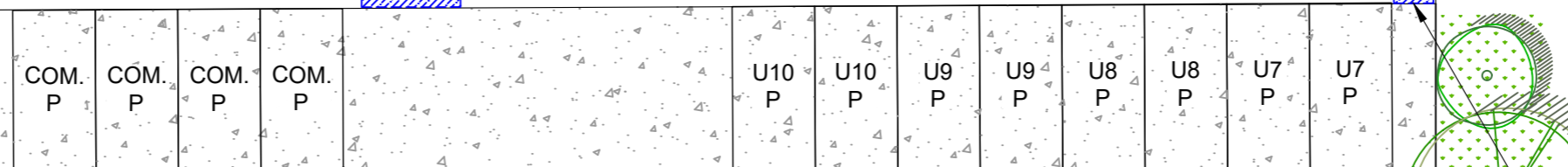
Carefully positioned lockable waste storage units serving Units without sufficient garden/amenity space and to reduce quantity of bin stores within courtyard area. This unit will house 3no. separate bin store units (in accordance with adjacent detail and dimensions) to serve units 3, 9 and 10.

BRAWN DRIVE

VIS. P

VIS. P

VIS. P



**Lockable Bin Store**  
Scale NTS

Indicating proposed kurbside collection points.  
Proposed Collection Point for Units; 7&8.

1no Electric Vehicle charging point to be installed for each unit to comply with Part S. Client to confirm position.

'Bold' Blue boxes highlight areas for individual lockable bin storage units in accordance with the above details.

Indicating proposed kurbside collection points.  
Proposed Collection Point for Units; 4,5,6.

Indicating proposed kurbside collection points.  
Proposed Collection Point for Units; 1&2.

**PRELIMINARY  
ISSUE**

**Proposed Site Block Plan**  
*(Waste Storage Proposals)*  
Scale 1:200

REV.	DETAILS	INIT.	DATE
A	Units 9 & 10 Gardens, EVC points, Waste Storage Area's Added To Plan	TM	13.07.2023

TITLE	Conversion of Existing Barns to Residential, Northdale Park, Raunds, Northamptonshire. Proposed Waste Storage Plan.		
SCALE	As Noted	SHEET:	A2
DRAWN	SCB	CHECKED	22-036-171A
DATE	December 2022	ISSUE	PRELIMINARY

**blueprint**  
Architectural Design Ltd.

5 BLOTT'S BARN, BROOKS ROAD, RAUNDS, NORTHANTS, NN9 6NS  
01933 551389 :: info@blueprintdesign.org.uk

CONTRACTORS MUST CHECK ALL DIMENSIONS ON SITE. ONLY FIGURED DIMENSIONS ARE TO BE WORKED FROM. DISCREPANCIES MUST BE REPORTED TO BLUEPRINT BEFORE PROCEEDING. © THIS DRAWING IS COPYRIGHT.