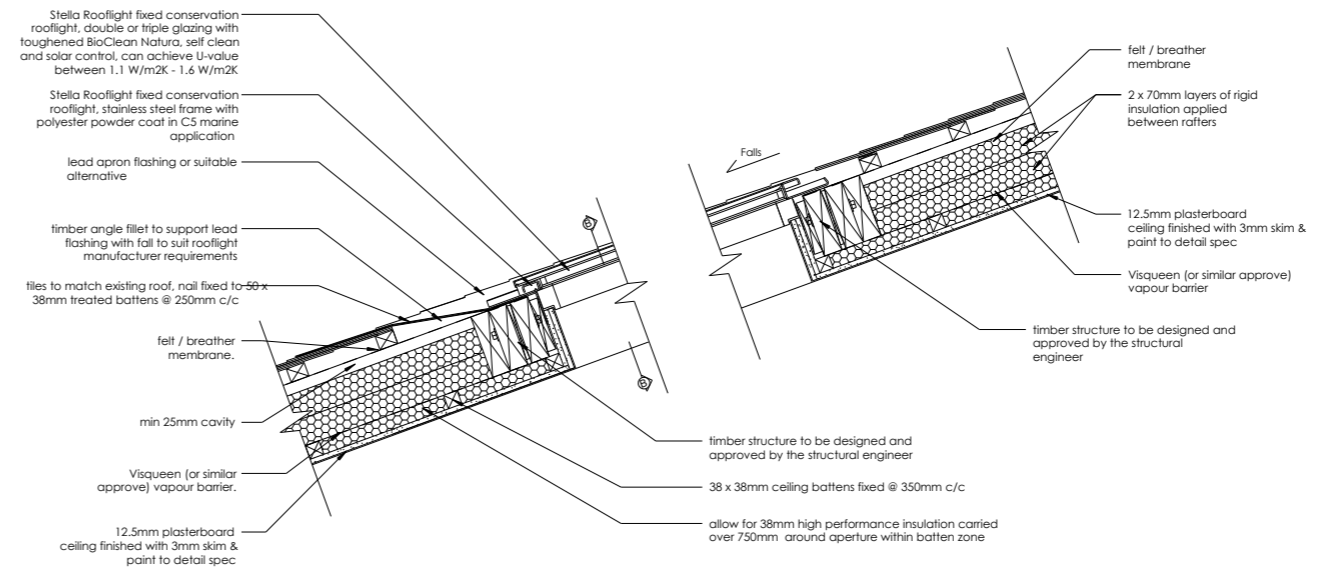


WINDOW SPECIFICATION
CONDITION 3, 4, 6



Detail Notes:
 Stella Rooflight conservation rooflight requires bespoke design according to project requirements. Suitable for a pitched roof between 17 and 70 degrees.
 Frame: 316L Stainless Steel with polyester powder coat in C5 marine application. RAL colours available.
 Thermal Performance: U-value between 1.1 W/m²K and 1.6 W/m²K whole unit value achievable subject to design requirements.
 Interior Lining: American ash with neutral oil protective coating as standard, other hardwood options and paint finishes available.
 Integrity: Wind and weather performance to harmonised standard BS EN14351-1:2006 + A1:2010.
 Glazing: Double or triple glazed, outer toughened BioClean Natura, self clean and solar control.

Roof Construction to achieve a 'U' Value compliant with local regulations. Potential thermal bridge area at joist support overcome by installing overlapped high performing rigid insulation or similar to 38mm ceiling batten zone extended a minimum 750mm all round aperture. A rigid insulation is a highly insulated block that helps to eliminate cold bridging at junctions.

SKYLIGHT SPECIFICATION
CONDITION 9