



TOR VIEW SCHOOL TRAVEL PLAN- 08/06/22

The purpose of a School Travel Plan (STP)

A School Travel Plan is a living document, updated every year, that sets out how a school will promote safer, active and sustainable travel to and from school. The main emphasis is on reducing the number of children being driven to and from school.

All schools are expected to have an STP and an up-to-date version is a requirement for planning permission.

This travel plan has been prepared to:

- Keep children fit, healthy and safe on the way to and from school
- Help the environment by reducing congestion, air and noise pollution
- Educate children, parents and staff on the health benefits of various sustainable travel options
- provide a structure to work to and record progress

The School Travel Plan Group

Assigning people to roles creates responsibility and ownership and is an important step towards a successful STP

ROLE	NAME OF INDIVIDUAL
STP Co-ordinator	Nicola Oakland
Head of School	Samantha Dillon
Senior Site Supervisor	Dennis McNulty

Document details (for schools)

Hard copy of document saved in	N:\E Handbook (Updated 2022)
Digital copy of document saved under	https://torview.org/tor-view-school/statutory-information
Approved for issue by	L. Parrish

School details

School Address	Clod Lane, Haslingden, BB4 6LR
Type of school e.g. Primary, Secondary. All Through, Academy, State Maintained	Special School
No of children on school roll	223 (increasing the capacity to 253 from September 2022)

No of staff/support staff	167 (increasing to 184 from September 2022)
Tel number	01706 214640
Website	Tor View School
STP Co-ordinator E-mail address	n.oakland@theviewtrust.org

Description of school & location to include a map of the area with the school or a site map. Describe briefly current STP development or details of expansion, if applicable.

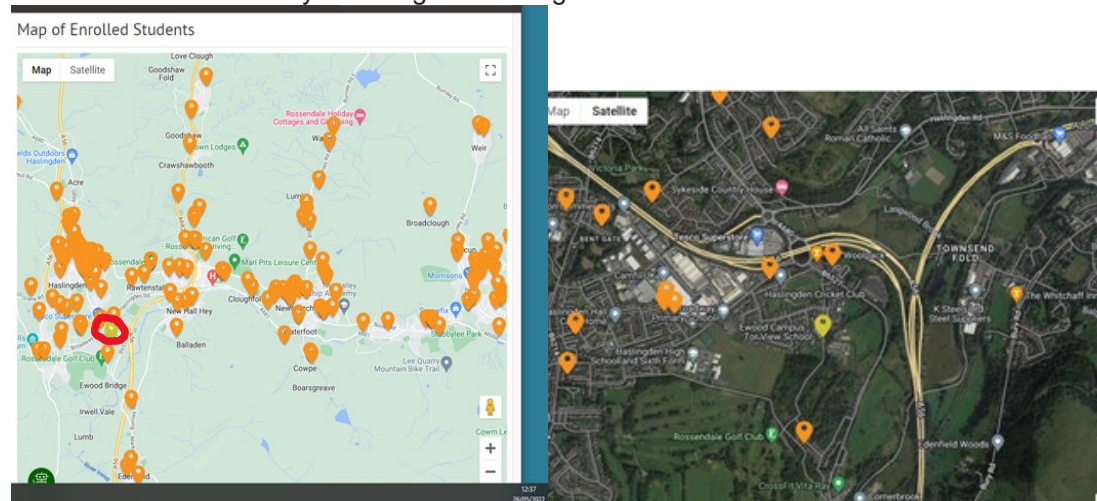


Existing facilities

Number of entrances for: - Vehicles - Pedestrian & cyclists only	2
Number of bike parking spaces	0
Number of scooter parking spaces	0
Number of car parking spaces	160
Pupil lockers for helmets and lights etc	
Access to tools and track pump/ freestanding station	Yes
Other – Showers for staff etc	Yes in Ewood Campus

Pupil and Staff travel survey

Collect travel to school data for pupils and staff, finding out how pupils and staff usually travel to school and include the findings in the STP. This could include simple maps of approximately where pupils and staff live. This can help determine who could be encouraged to travel more sustainably including car sharing.



The top map shows the approximate locations of pupil's homes who are currently on roll at Tor View School. Distance to school ranges between 0.3km and 33km. An average of 187 pupils travel to school on dedicated school transport with the remaining 36 pupils travelling by car. The map below shows those pupils who live within approximately 1km of the school (12 pupils). Of these, 5 travel on dedicated transport and 7 travel by car/walk.

Mode of Travel	Current Travel Data				Travel Data Targets (12months time)			
	Date	08/06/22			Date	08/06/22		
	Number:		%		Number		%	
	Pupil 223 on roll	Staff 167 on roll	Pupils	Staff	Pupils 253	Staff 184	Pupils	Staff
Car/van - child and siblings	0	150	0	90%	0	150	0	82%
Car share - with other children(not siblings)	0	6	0	4%	0	10	0	5%
Walk/scooter	0	10	0	6%	5	15	2%	8%
Cycle	0	1	0	1%	0	5	0	3%
Public transport (bus or train)	0	0	0	0	0	4	0	2%

Dedicated School Bus	187	0	84%	0	200	0	79%	0
Taxi	0	0	0	0	0	0	0	0
Other	36	0	16%	0	48	0	19%	0

Transport links

Buses Route numbers, timings and proximity to school.	<p>Lock Gate Bus Station is approximately a 9 minute walk from the school Bus X43 runs from Burnley to Manchester City Centre</p> <p>Knowsley Road is approximately a 11 minute walk from the school Bus x41 runs from Accrington to Manchester City Centre</p>
--	---

Action Plan

Initiative	Explain how this is / could be delivered (how you plan to achieve this?)
Reduce and manage parental parking and congestion issues at school travel time.	Staggered drop off/ pick up time. We have added an extra car park with 10 new spaces and extended our current car park. Allow for drop off and walk from 2nd car park.
Parents & Pupil Pledge – e.g. commit to active travel AND if need to drive, park considerately & safely	Zig zag lines outside school (roadside). We have a designated drop off/pick up point within the car park.
Car share for staff	Communicate the financial and economic benefit of car sharing with staff to encourage.
Car share marked parking bays for staff	Provide dedicated car share spaces for guaranteed parking to encourage staff.
Encourage Cycle to Work Scheme	Implement the cycle to work scheme and assign designated storage for bikes/scooters.

Other issues/comments that need addressing

--

Active travel year planner

Schools to populate throughout the year

<p>January Clean and tidy up bike sheds (these are for the storage of school bikes)</p>	<p>February Bikeability Balance</p>
--	--

<p>March Promote Cycle to Work scheme</p>	<p>April</p>
<p>May Bikeability</p>	<p>June Bikeability</p>
<p>July Parent Travel Information for new parents of children starting in Sept of the expected active travel culture & behaviour</p> <p>Class exercises e.g. PHSE re Share this Space awareness, local mapping, cycle path awareness</p>	<p>August Update travel information on school website & check relevant logos e.g. Bikeability are on school letter templates & website</p>
<p>September Reminder letter to parents of new intake outlining STP aims, tools and help available. Encouragement to travel sustainably</p>	<p>October Be Bright Be Seen (darker evenings) awareness school assembly</p>
<p>November Road Safety Week</p>	<p>December Christmas theme</p>