

Visibility Splay  
Scale 1:500

Keep your Distance

SIGN FACE: S1		Assembly:	
Font	Medium	X Ht:	150 mm
Border:	White	Width:	1750 mm
B/G:	Blue	Height:	860 mm
Material:	RA1	Area:	1.5 m <sup>2</sup> /sq

SIGN ASSEMBLY: S1	
Width:	1600 mm
Length:	900 mm
Depth:	700 mm
Volume:	1.01m <sup>3</sup> /cu
Mounting Ht:	1800 mm
Earth Cov:	75 mm
Sub base:	150 mm
Post No:	2
Centres:	1000mm
Post/s Lgth:	3350 mm
Post type:	CHS
Post:	88.9 x 3.2
Illuminated:	No
Base type:	Single

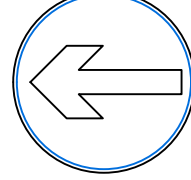
Existing sign face to be reused on new passively safe posts and foundation (details to be checked on site)



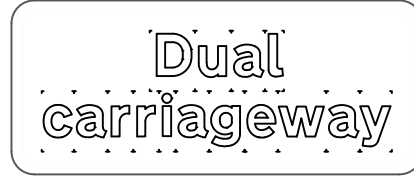
SIGN FACE: S2		Assembly:	
Font	Medium	X Ht:	150 mm
Border:	White	Width:	3470 mm
B/G:	Brown	Height:	1160 mm
Material:	RA1	Area:	4.03 m <sup>2</sup> /sq

SIGN ASSEMBLY: S2	
Width:	3200 mm
Length:	1000 mm
Depth:	800 mm
Volume:	2.56m <sup>3</sup> /cu
Mounting Ht:	1400 mm
Earth Cov:	75 mm
Sub base:	150 mm
Post No:	2
Centres:	2200mm
Post/s Lgth:	3200 mm
Post type:	Lattix
Post:	C3320
Illuminated:	No
Base type:	Single

Existing sign face to be reused on new Lattix posts and foundation (details to be checked on site)



SIGN FACE: S3		Assembly:	
Font	-	X Ht:	100 mm
Border:	White	Width:	600 mm
B/G:	Blue	Height:	600 mm
Material:	RA2	Area:	0.36 m <sup>2</sup> /sq



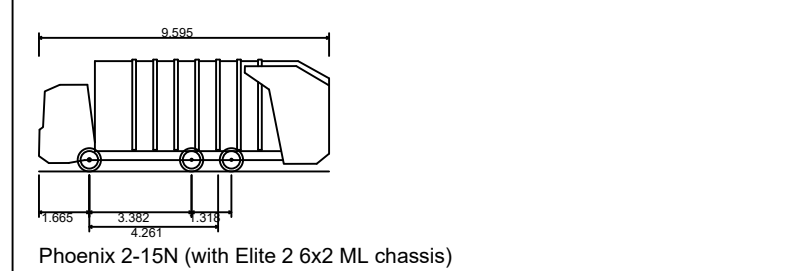
SIGN FACE: S3		Assembly:	
Font	Heavy	X Ht:	62.5 mm
Border:	Black	Width:	850 mm
B/G:	White	Height:	360 mm
Material:	RA2	Area:	0.31 m <sup>2</sup> /sq

SIGN ASSEMBLY: S3	
Width:	900 mm
Length:	900 mm
Depth:	800 mm
Volume:	0.65m <sup>3</sup> /cu
Mounting Ht:	2100 mm
Earth Cov:	75 mm
Sub base:	150 mm
Post No:	1
Centres:	-
Post/s Lgth:	3975 mm
Post type:	CHS
Post:	88.9 x 5.0
Illuminated:	No
Base type:	Single

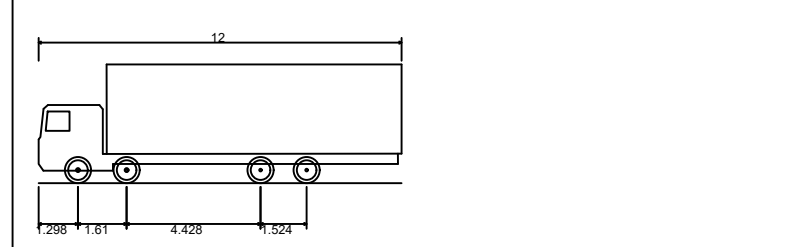
Sign S3 to be illuminated and fed via a private feed

Notes

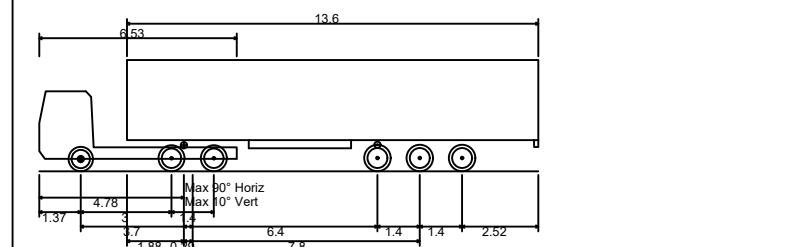
Do not scale this drawing  
This drawing shall be read in conjunction with all other relevant Engineering, Architectural, Landscaping details, drawings and specifications and all relevant Highway Authority Plans.



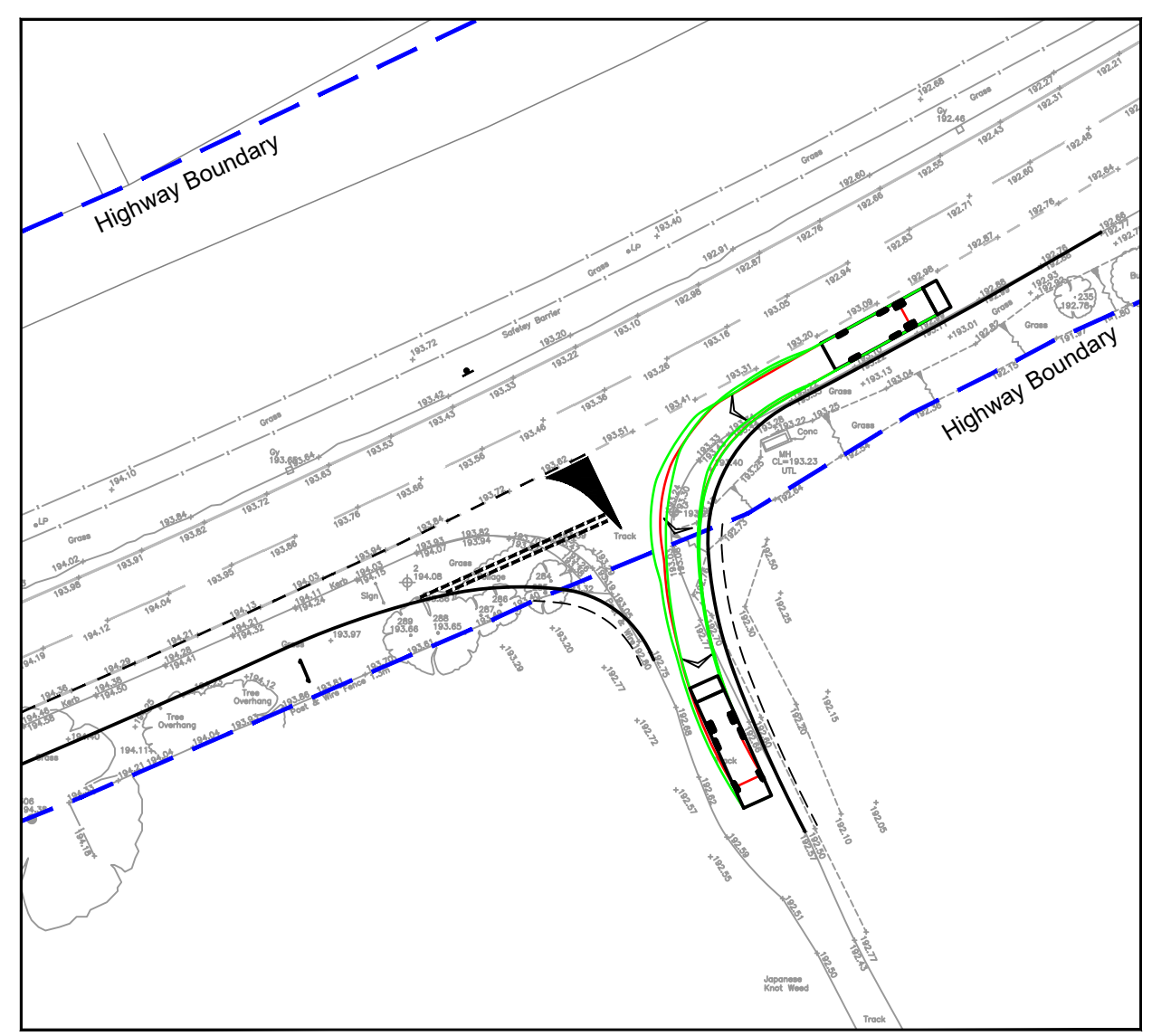
Phoenix 2-15N (with Elite 2 6x2 ML chassis)  
Overall Length 9.595m  
Overall Width 2.230m  
Overall Body Height 3.699m  
Min Body Ground Clearance 0.251m  
Track Width 2.200m  
Lock to lock time 4.00s  
Kerb to Kerb Turning Radius 6.500m



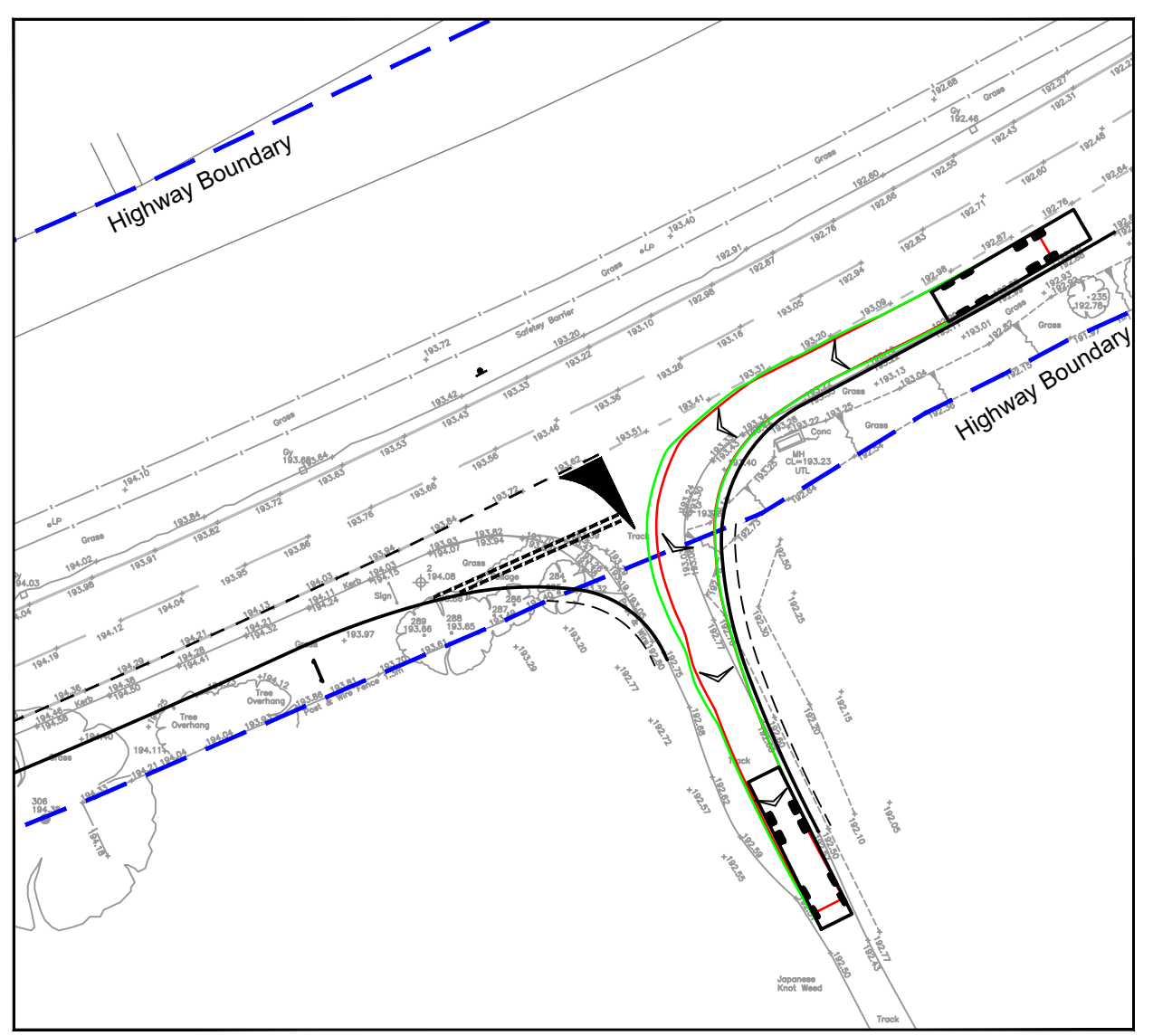
Rigid Truck  
Overall Length 12.000m  
Overall Width 2.500m  
Overall Body Height 3.929m  
Min Body Ground Clearance 0.412m  
Track Width 2.471m  
Lock to lock time 6.00s  
Kerb to Kerb Turning Radius 11.900m



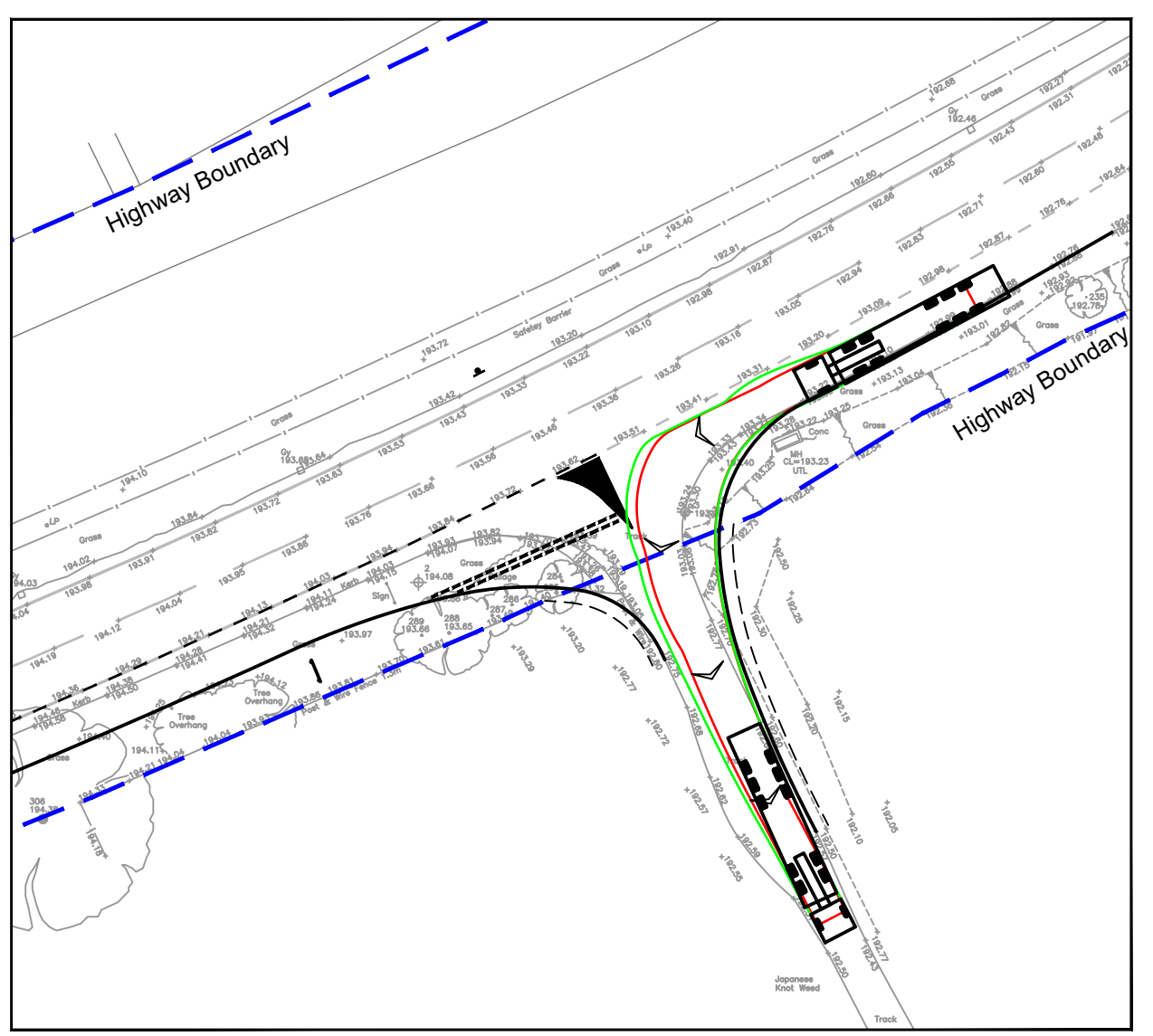
Max Legal Length (UK) Articulated Vehicle (16.5m)  
Overall Length 16.500m  
Overall Width 2.550m  
Overall Body Height 3.891m  
Min Body Ground Clearance 0.411m  
Max Track Width 2.500m  
Lock to lock time 6.00s  
Kerb to Kerb Turning Radius 6.500m



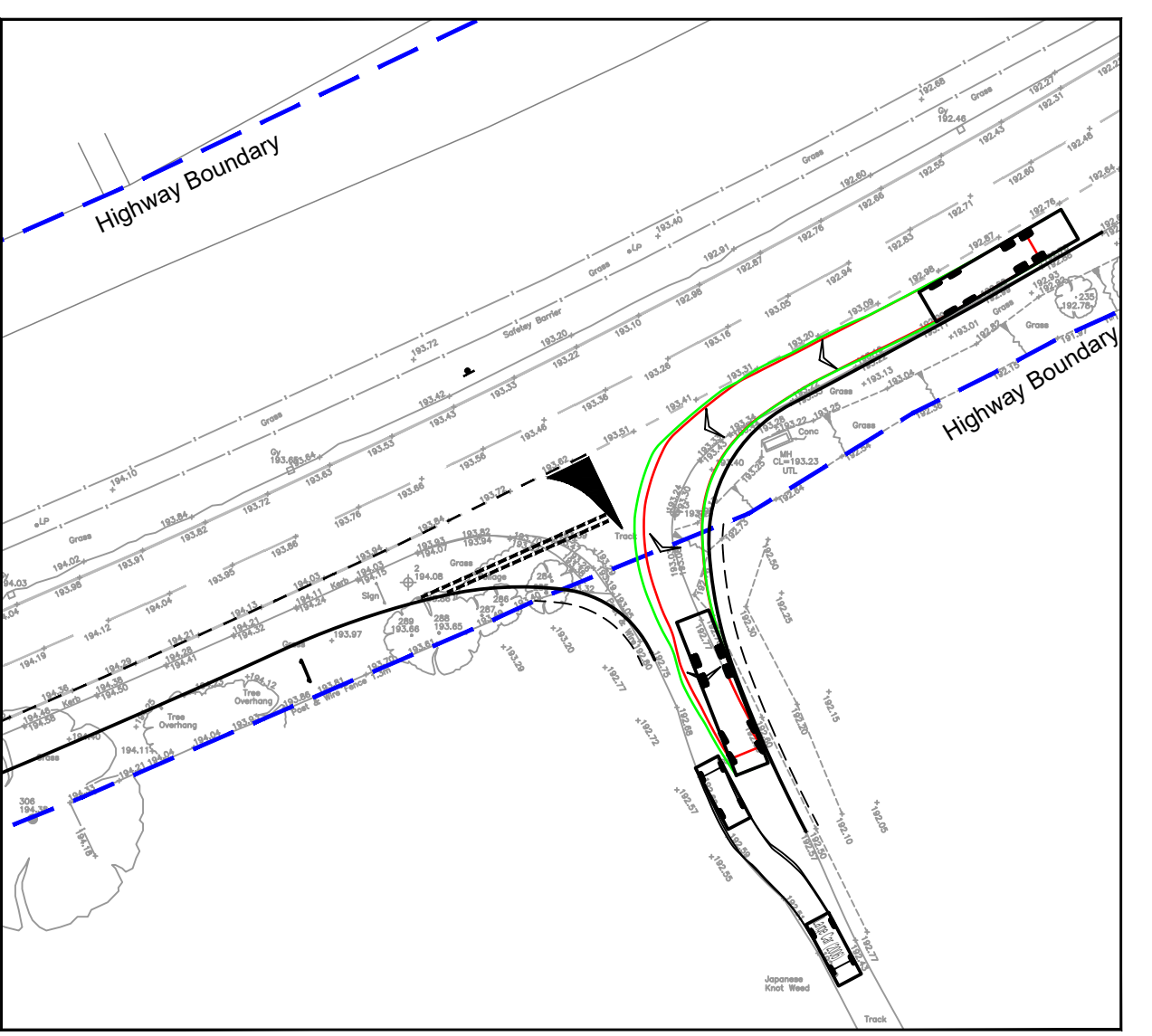
AutoTRACK Profile  
Refuse Vehicle  
Scale 1:500



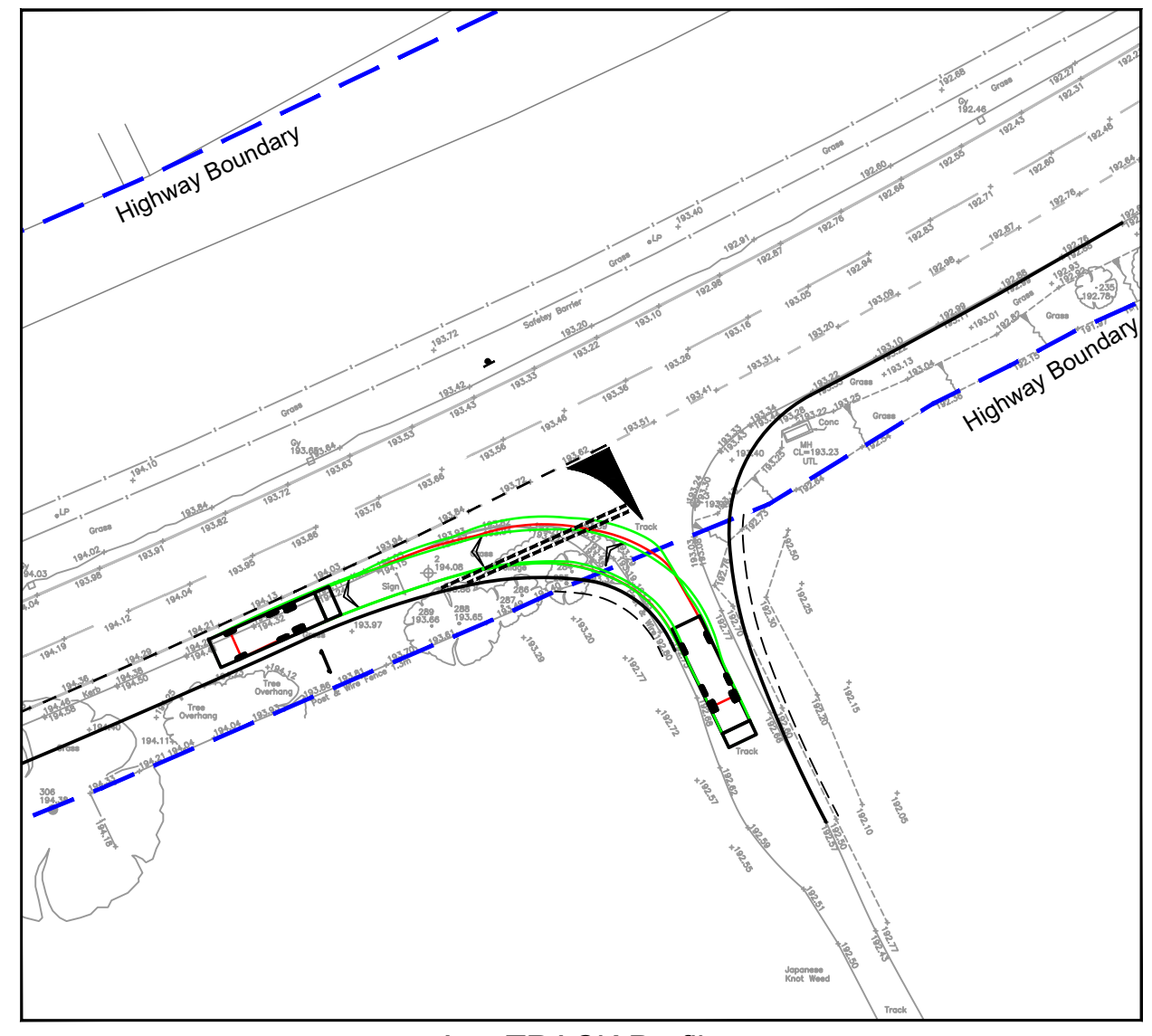
AutoTRACK Profile  
Rigid Truck  
Scale 1:500



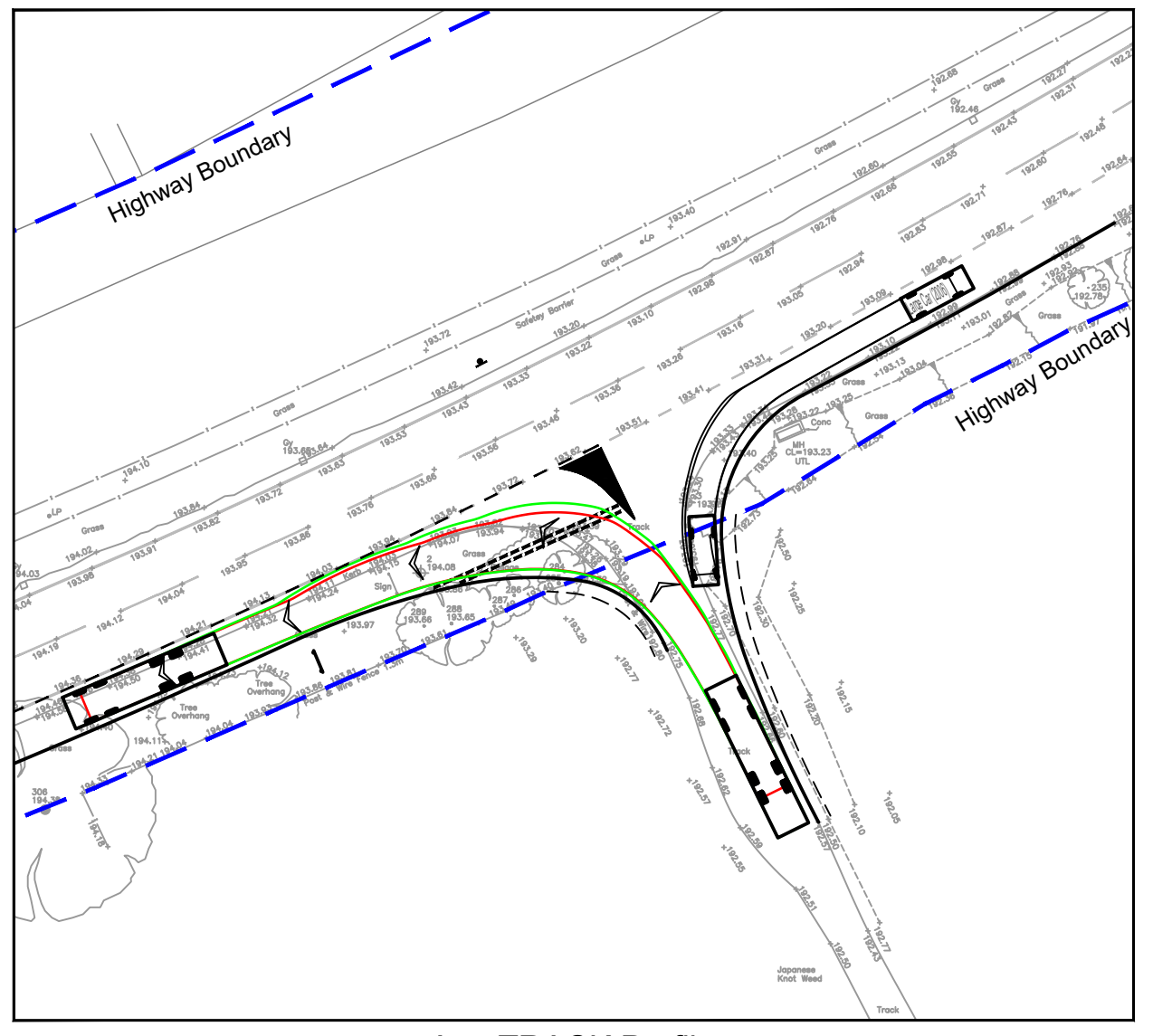
AutoTRACK Profile  
Articulated Vehicle  
Scale 1:500



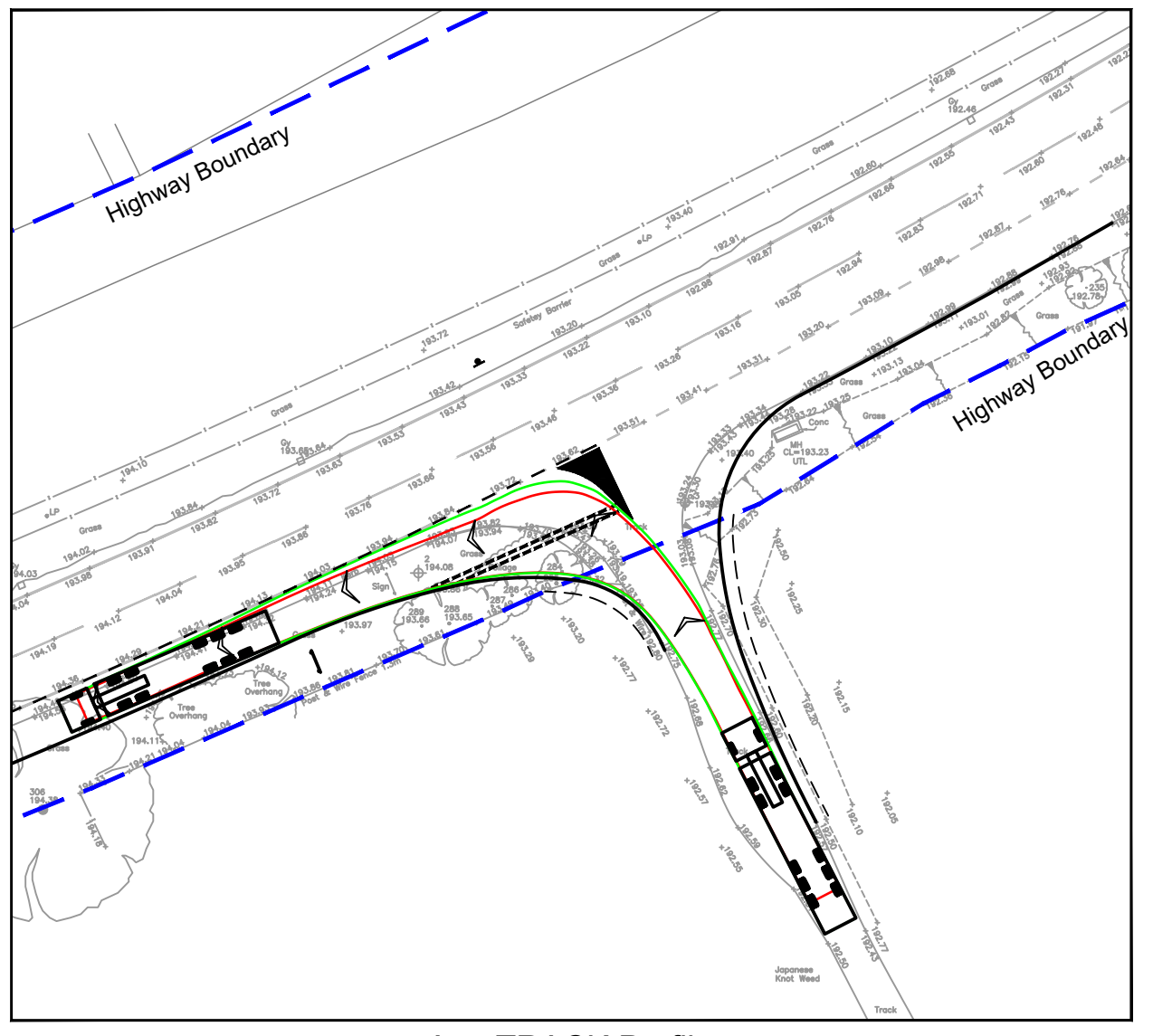
AutoTRACK Profile  
Rigid Truck passing Large Car  
Scale 1:500



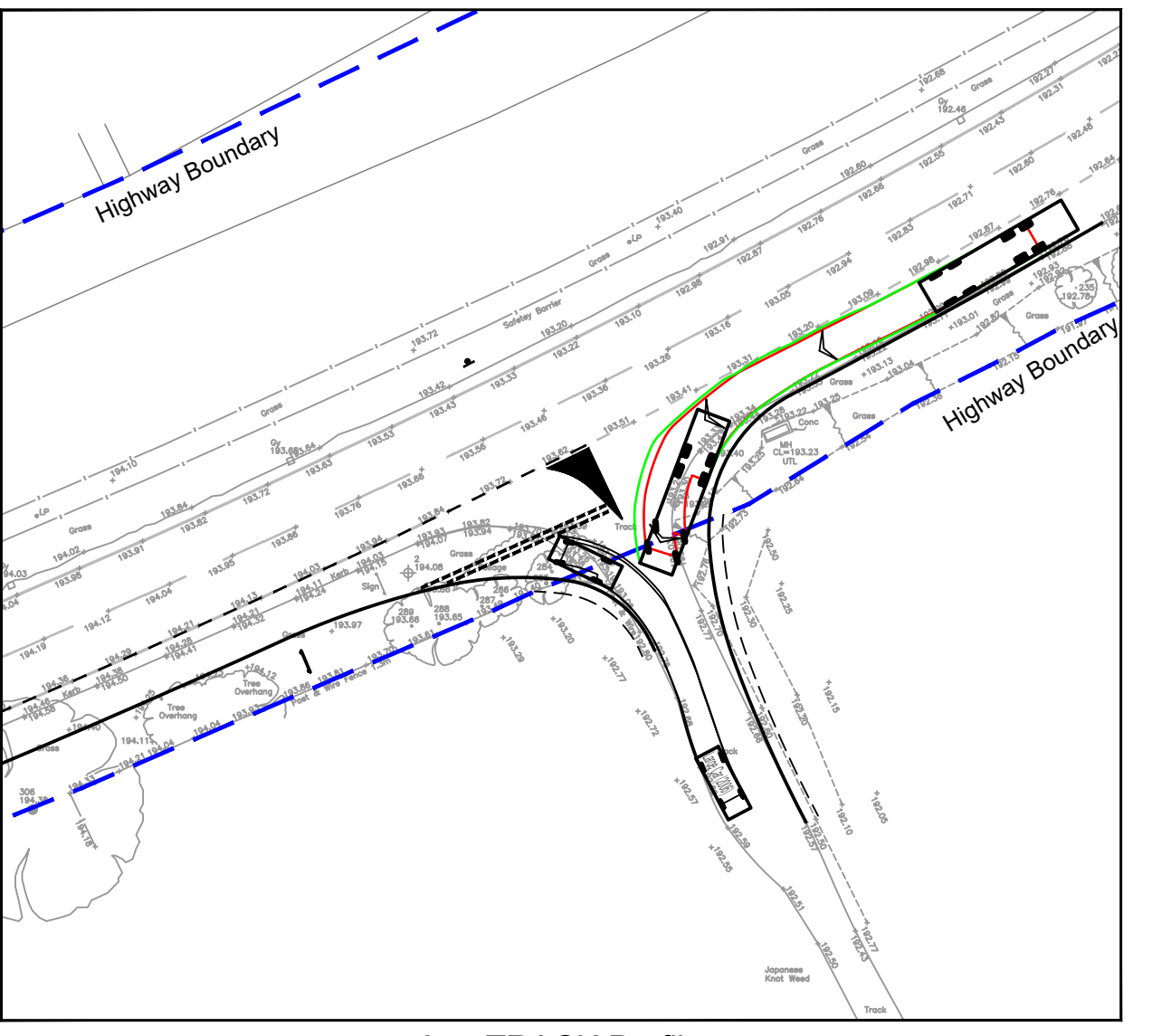
AutoTRACK Profile  
Refuse Vehicle  
Scale 1:500



AutoTRACK Profile  
Rigid Truck  
Scale 1:500



AutoTRACK Profile  
Articulated Vehicle  
Scale 1:500



AutoTRACK Profile  
Rigid Truck passing Large Car  
Scale 1:500

REVISION	AMENDMENT	DRN	DATE	CHK
B	Amendments following Comments from KCC	JCB	13/06/23	MT
A	Amendments following Stage 2 Road Safety Audit	JCB	26/07/23	MT

**Bellamy Roberts**  
Clover House  
Western Lane  
Odiham  
Hampshire, RG29 1TU  
Tel: 01256 703355  
Email: info@bellamyroberts.co.uk

CLIENT: D. Body Developments  
PROJECT: Scammell Lodge Farm, Maidstone

TITLE: A249 Access Improvements  
Signs and AutoTRACK Profiles

DRAWN BY	JCB	DESIGN BY	JCB	CHK BY	MT
DATE	19/01/23	DRAWING No.	5362 / 1002	REV No.	B
SCALE	1:500 @ A1				