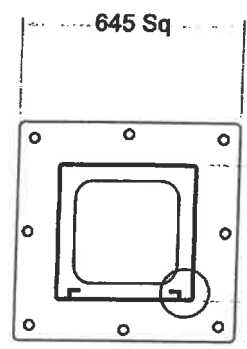


Notes:
 All Material mild steel grade S235 minimum
 Finish: Galvanized BS EN ISO 1461:2009

10 Mtr Nominal

Ø219x5 CHS

400² Cabinet



Base Plate

392

746

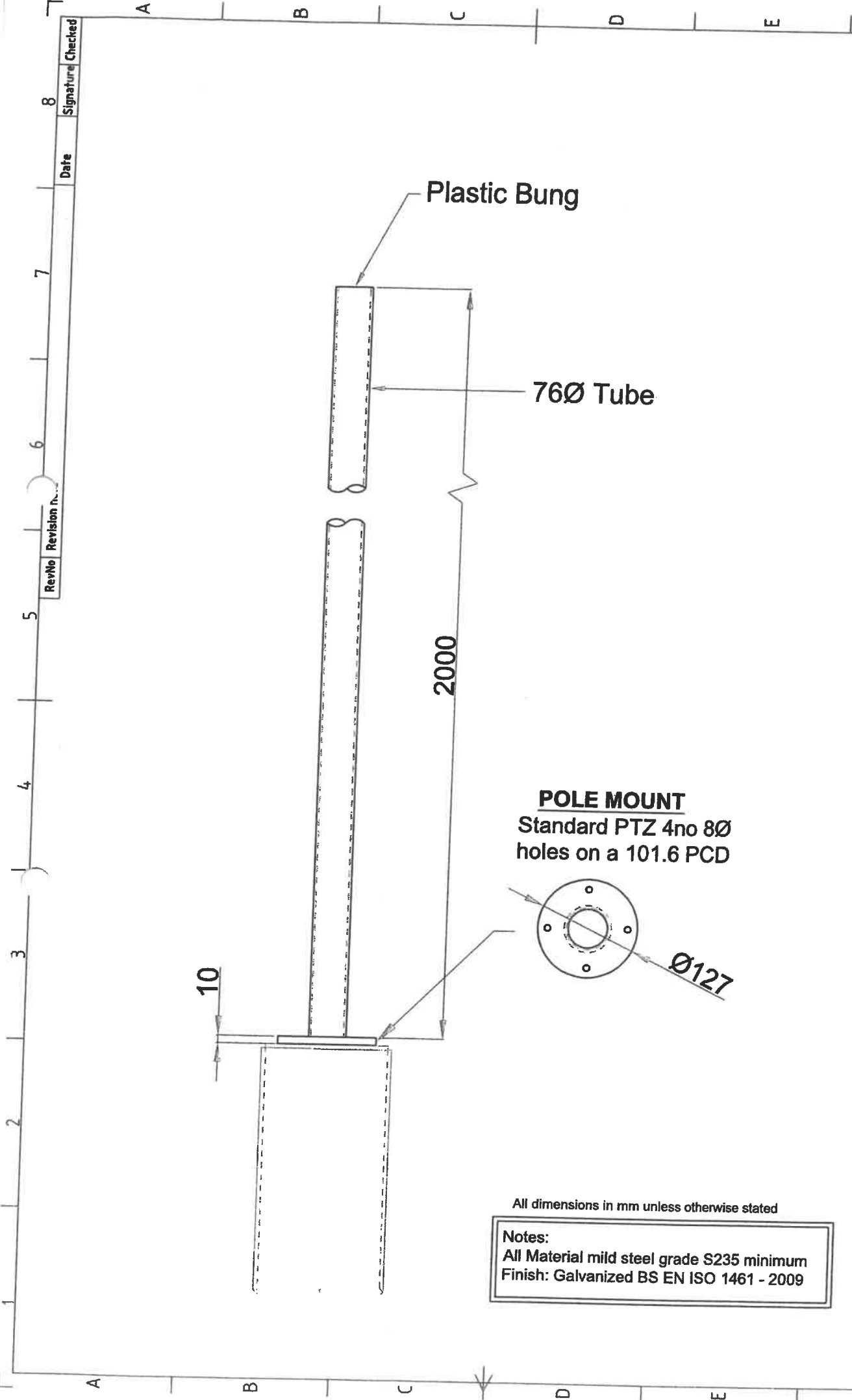
312

1240

25

ITEM	Dims = mm	Quality Standard: BS EN 1090 / Execution Class: EXC1	Scale: Not to scale
DRN	CHKD	Jan 2016	CUSTOMER:
WEC Group Limited CCTV- Division - Britannia House, Junction street Darwen Lancashire BB3 2RB Tel: 01254 700200 Fax: 01254 873637 Website: WWW.WEC.uk.net - Email: ell@wec.uk.net		ANGLE PROJECTION 	TITLE: 400 Sq Cabinet Based 10 Mtr Pole
DRG NO	TC.10.400.01	ISS	00

This drawing / document is copyright and sole property of WEC Group Ltd. Therefore as such the contents may not either in whole or in part be passed to a third party without first obtaining permission from WEC Group Ltd.



Plastic Bung

76Ø Tube

2000

10

POLE MOUNT
Standard PTZ 4no 8Ø
holes on a 101.6 PCD

Ø127

All dimensions in mm unless otherwise stated

Notes:
All Material mild steel grade S235 minimum
Finish: Galvanized BS EN ISO 1461 - 2009

ITEM	QTY	DESCRIPTION	Scale: Not to scale
DRN	CS	CHKD	12.02.2020
WEC Group Limited CCTV - Division Britannia House, Junction Street, Darwen, Lancashire BB3 2RB Tel: 01254 700200 Fax: 01254 873837 Website: WWW.WEC.UK.NET - Email: off@wec.uk.net			CUSTOMER
			TITLE CS2000
			DRG NO WEC - 467586A1
			ISS 00

*This drawing / document is copyright and sole property of WEC Group Ltd.
Therefore as such the contents may not either in whole or in part be passed
to a third party without first obtaining permission from WEC Group Ltd.*

