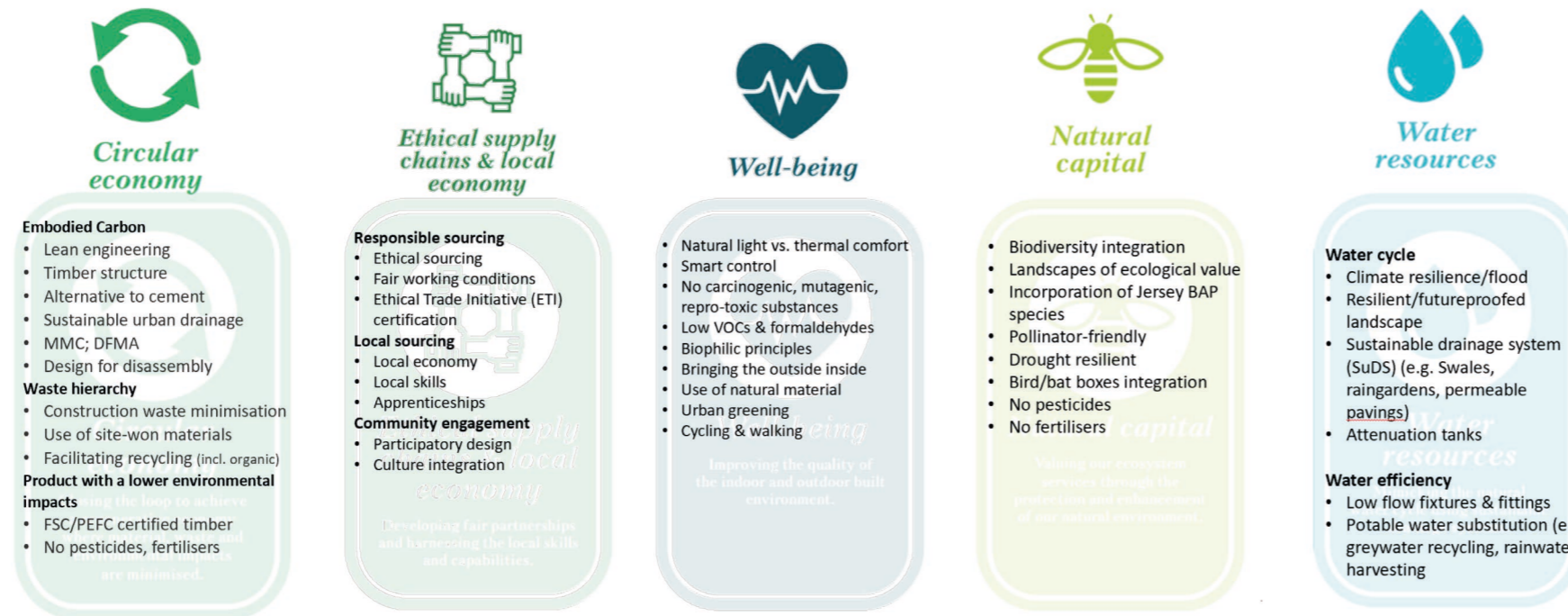


Sustainable Design Statement



The client is committed to delivering an environmentally friendly and sustainable development. The bullet points listed below will underpin our strategy.

- Reduced use of resources – through reduced material use and wastage;
- Design for longevity and adaptability – avoiding premature obsolescence and being self sustaining;
- Low water use fittings, grey water and rain water recovery, shower waste;
- Designs that reduce carbon positive lifestyles – Smart Technology will help unlock this by facilitating positive interaction with the development across all aspects of environmental control, energy use, maintenance, waste management and water use;
- Reduced energy use through a ‘Fabric First’ approach;
- Prioritised use of renewables – utilise site-specific renewable energy options;
- Suppliers and tradespeople local to the scheme, driving down carbon consumption associated with supply chain activities and investing in local businesses;
- Offsite manufacture – reducing wastage, saving time and maximising construction efficiency by designing to suit local offsite manufacture of key building components;
- Reuse of materials – maximising reuse of existing structural elements and materials to boost the circular economy and reduce reliance on virgin material;
- Localisation of supply chain – designing to suit materials.