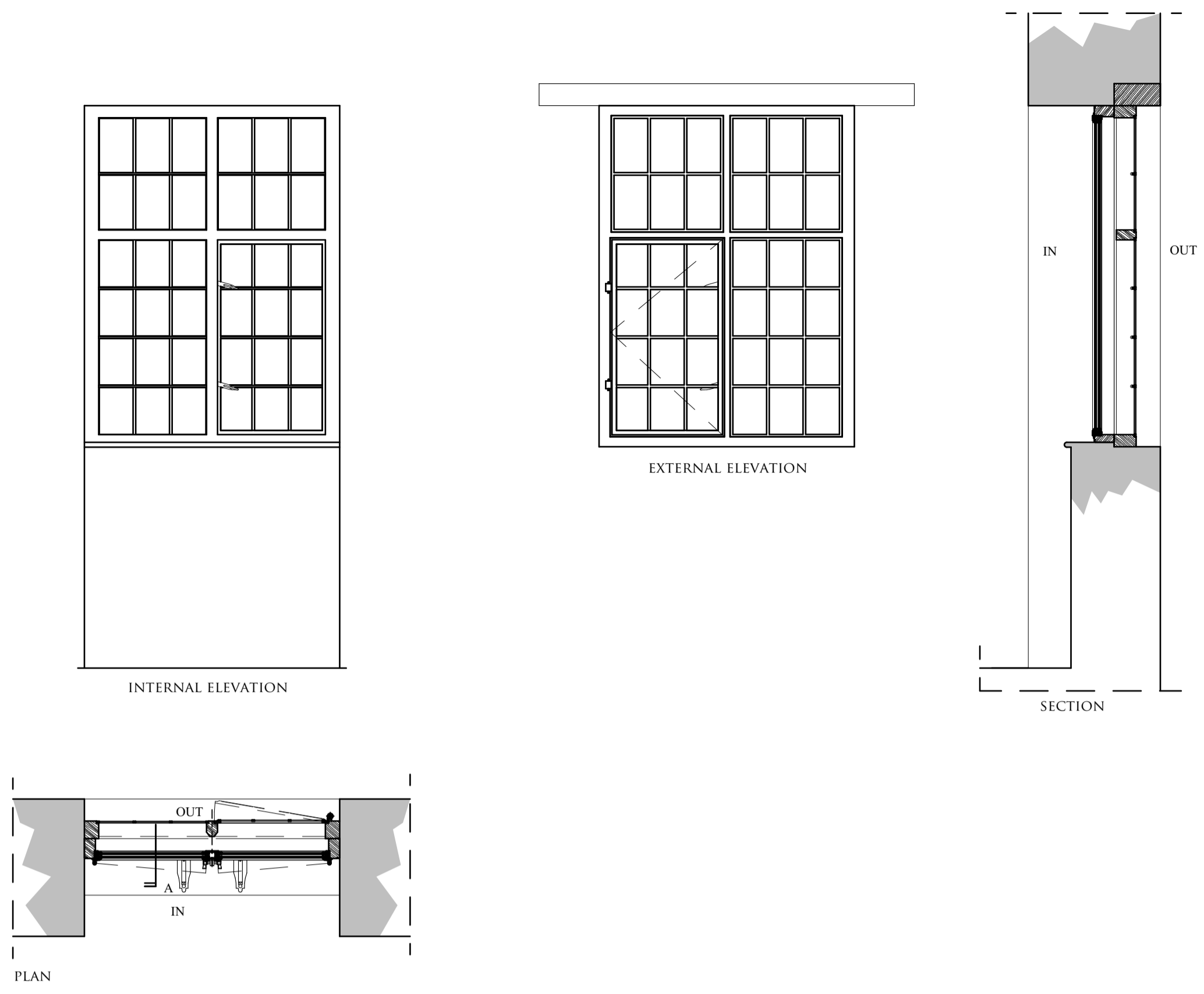
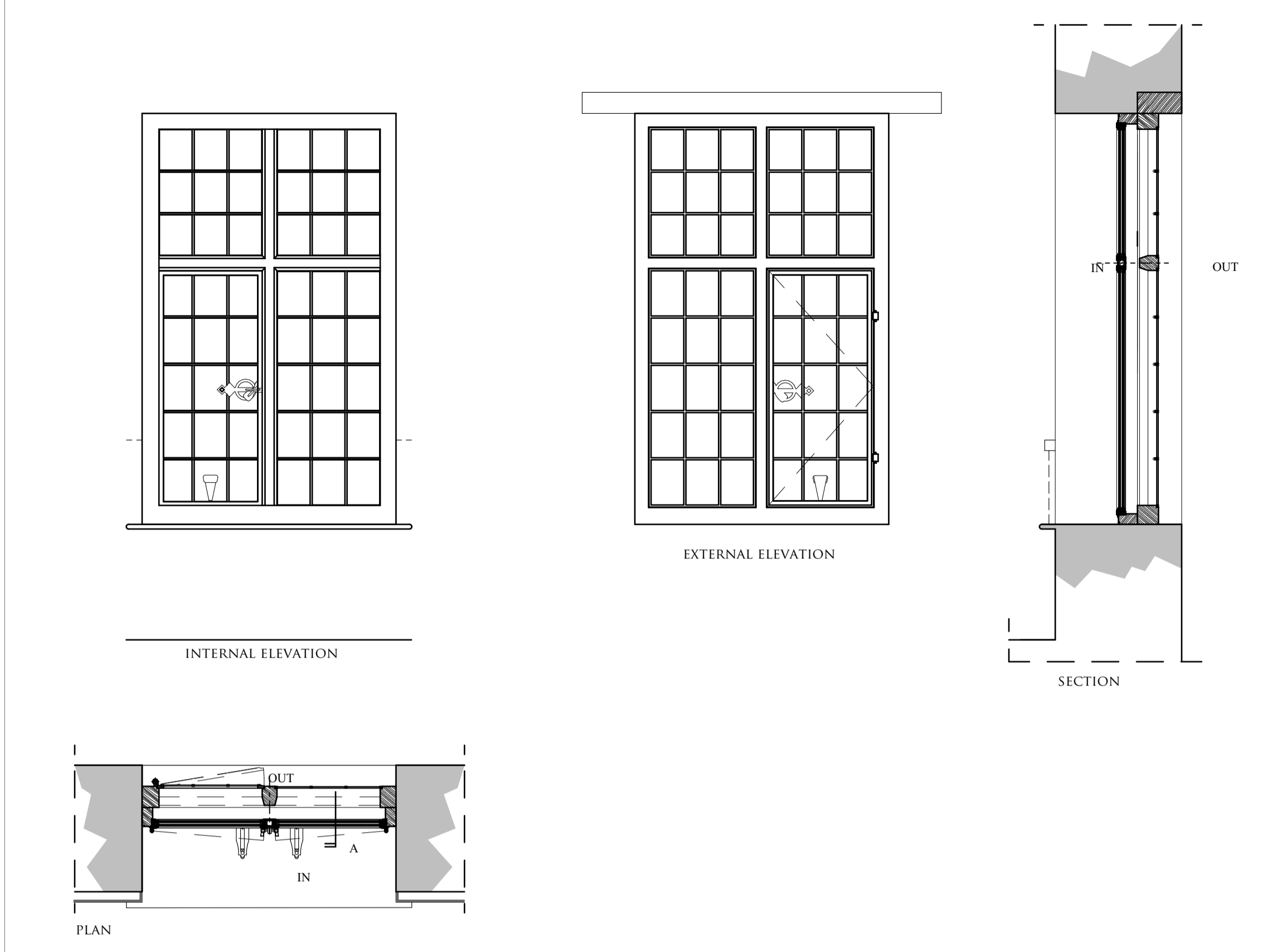


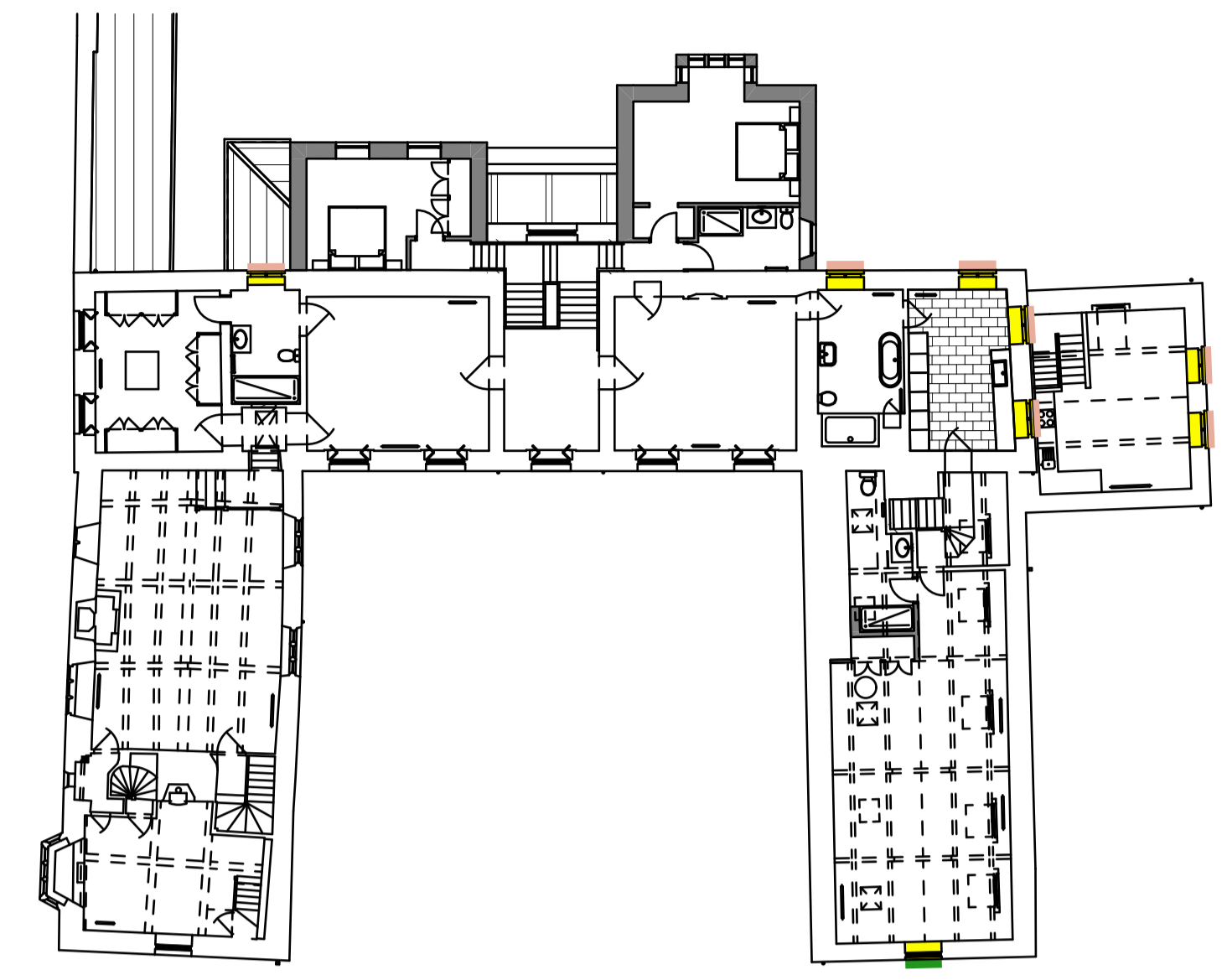
CHECK ALL DIMENSIONS ON SITE AND REPORT ANY DISCREPANCIES.  
DO NOT SCALE FROM THIS DRAWING



WF01 @1:20

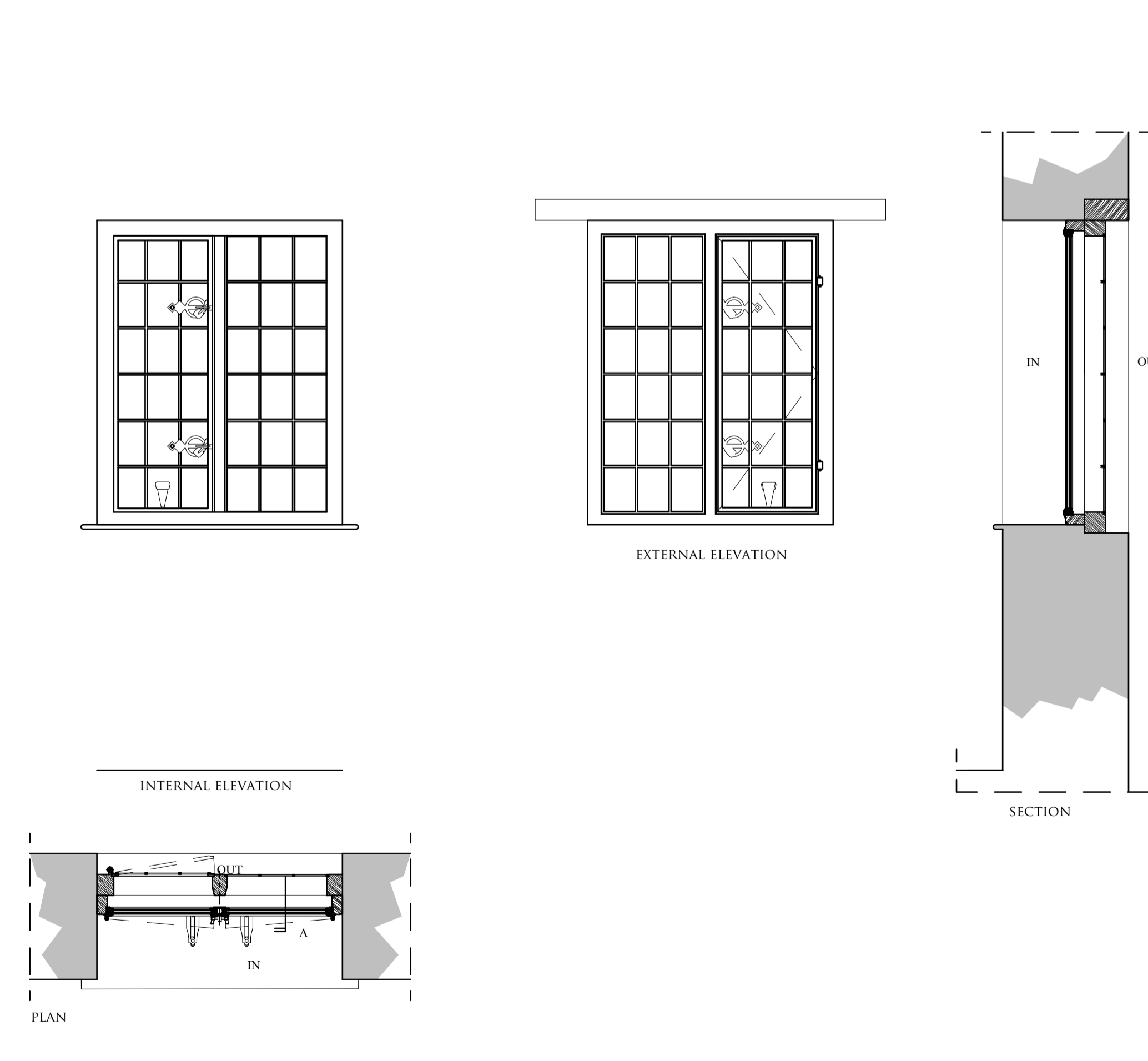


WF11 & WF12 @1:20

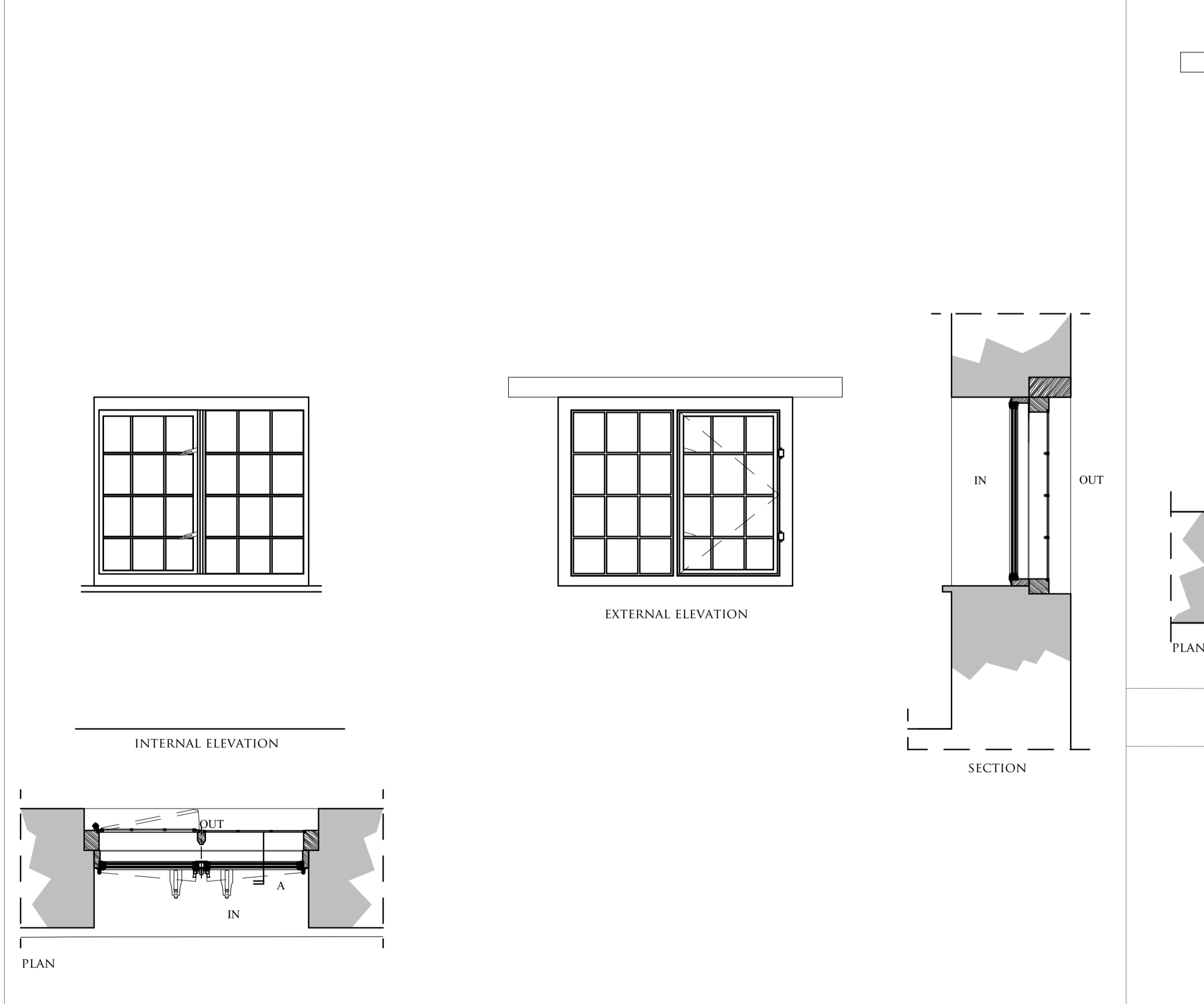


- KEY:
- NEW SECONDARY SLIDING GLAZING - SINGLE GLAZING
  - NEW SECONDARY DOUBLE GLAZING CASEMENT WINDOW
  - REFURBISH EXISTING WINDOW
  - NEW DOUBLE GLAZED CASEMENT WINDOW
  - NEW SINGLE GLAZED FLAT IRON LEADED LIGHT DETAILED TO MATCH EXISTING HISTORIC PATTERN

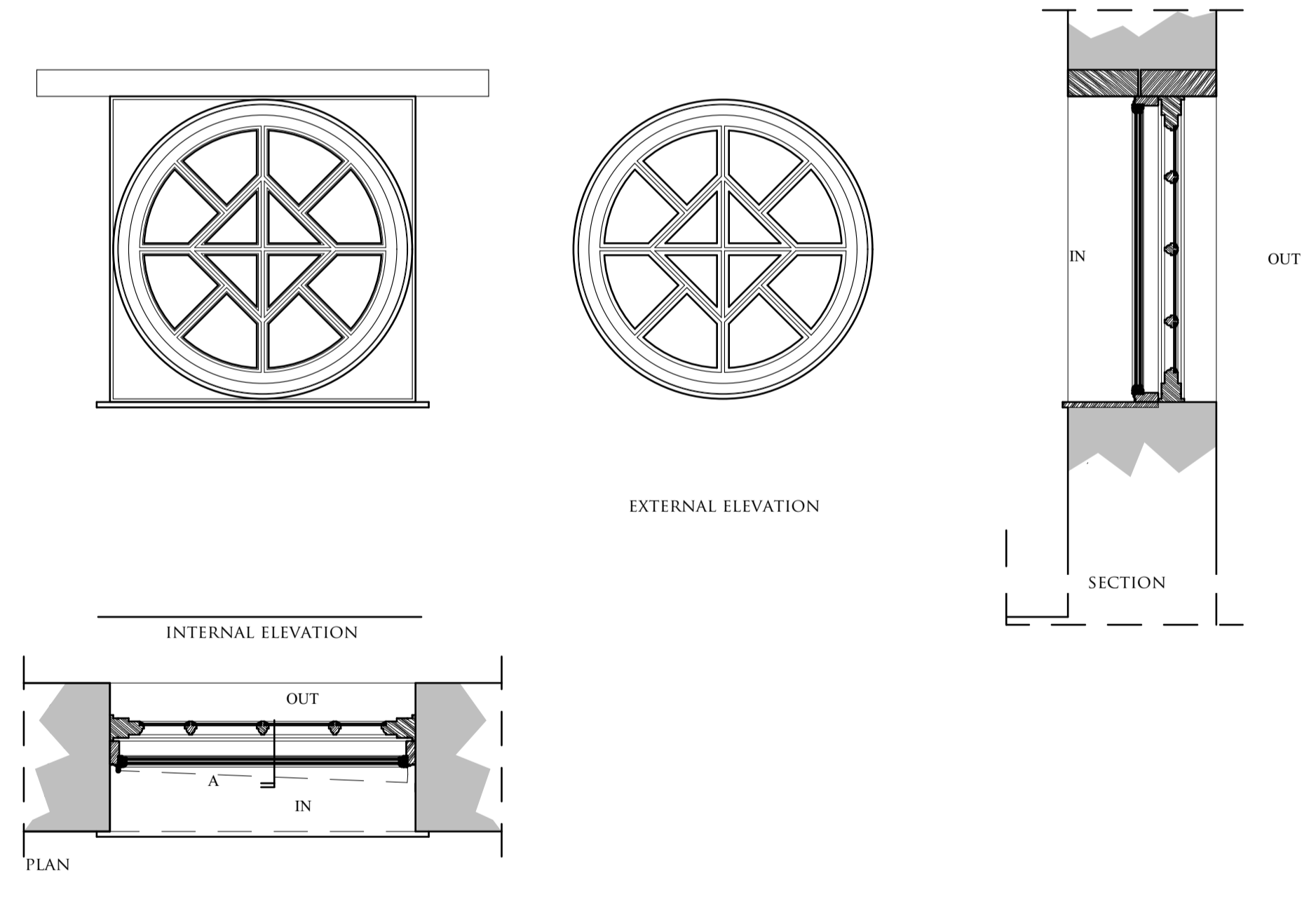
\*FOR SECONDARY GLAZING JAMB DETAILS PLEASE REFER TO DRAWING 0503/PL16



WF13 & WF14 @1:20



WF18 & WF19 @1:20



WF25 @1:20

REV	DATE	NOTES
A	19.09.23	Planning status indicated. Key updated.

**PLANNING**

**CRAIG HAMILTON ARCHITECTS LTD**  
 COED MAWR FARM, HUNDRED HOUSE, RADNORSHIRE LD1 5RP · T:01982 553312  
 OLD STABLE BLOCK, INCUBIVE SPACE, HURSLEY PARK ROAD, HURSLEY SO21 2JN

PROJECT: THE OLD RECTORY, WITHINGTON  
 DRAWING TITLE: WINDOW SCHEDULE - SHEET 2  
 DRAWING N<sup>o</sup>: 0503/PL17 REV: A  
 DATE: JULY 2023 SCALE: 1:20, 1:200, 1:1@ A1  
 DRAWN BY: MS