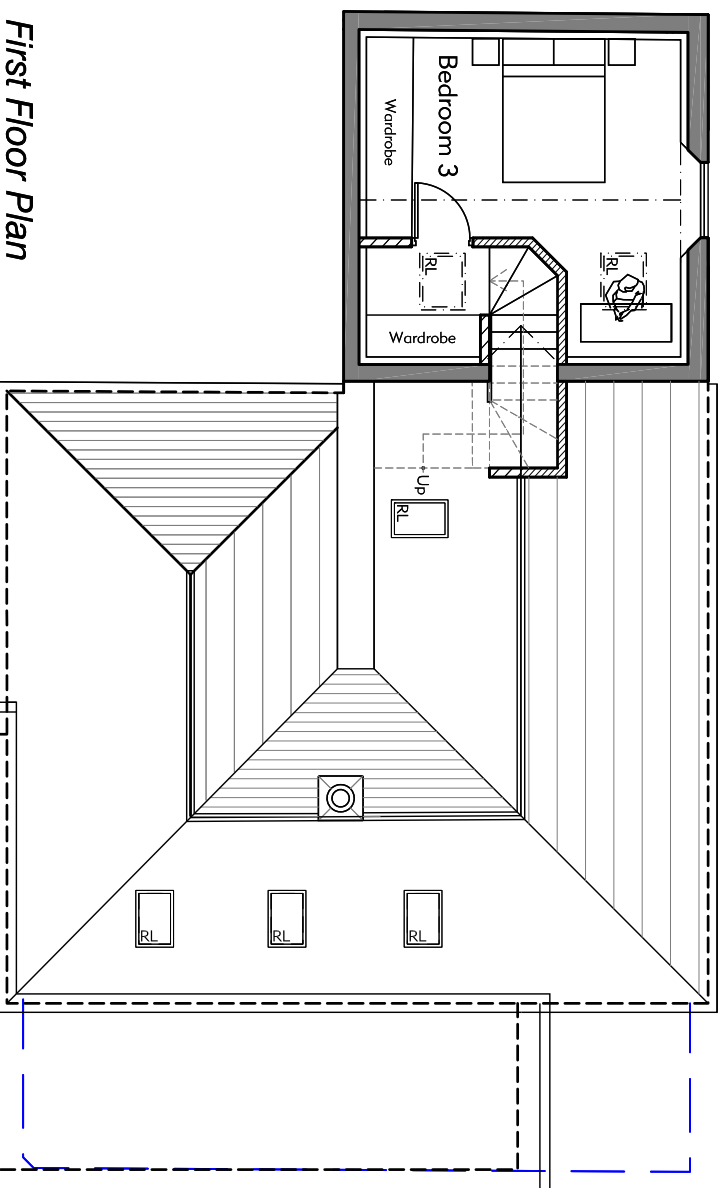
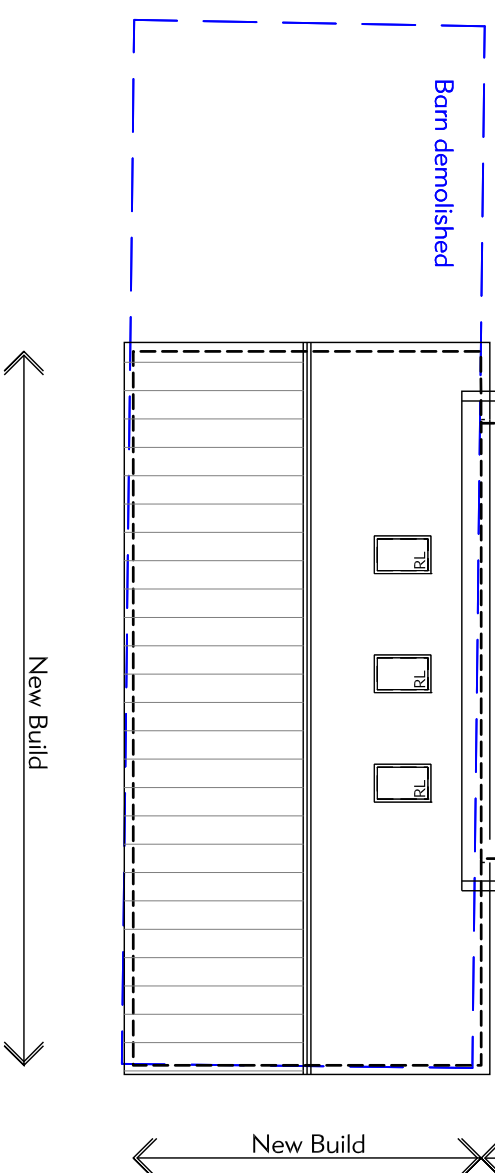


Refurbished stable block

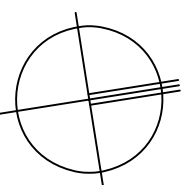
Demolished lean-to



First Floor Plan



north



Rev:

Project

Holly Tree Farm, Oxton - Oxton Farms Trust

Date

JUNE 20

Scale

1:200

Size

A3

Drawing Title

Proposed First Floor Plan

Project No.

1813 (2)

Drwg No.

58

Rev

A

© Alex McIntyre Architects. The Studio, 1 Clinton Terrace, Derby Road, Notm, NG7 1LY. www.amcarch.co.uk. T:0115 9599777



Alex McIntyre  
ARCHITECTS

# PLANNING