
DESIGN & ACCESS STATEMENT

New wheel chair ramped access.

at

The George,
74 Bexley High Street
DA5 1AJ.



smith coldham design ltd

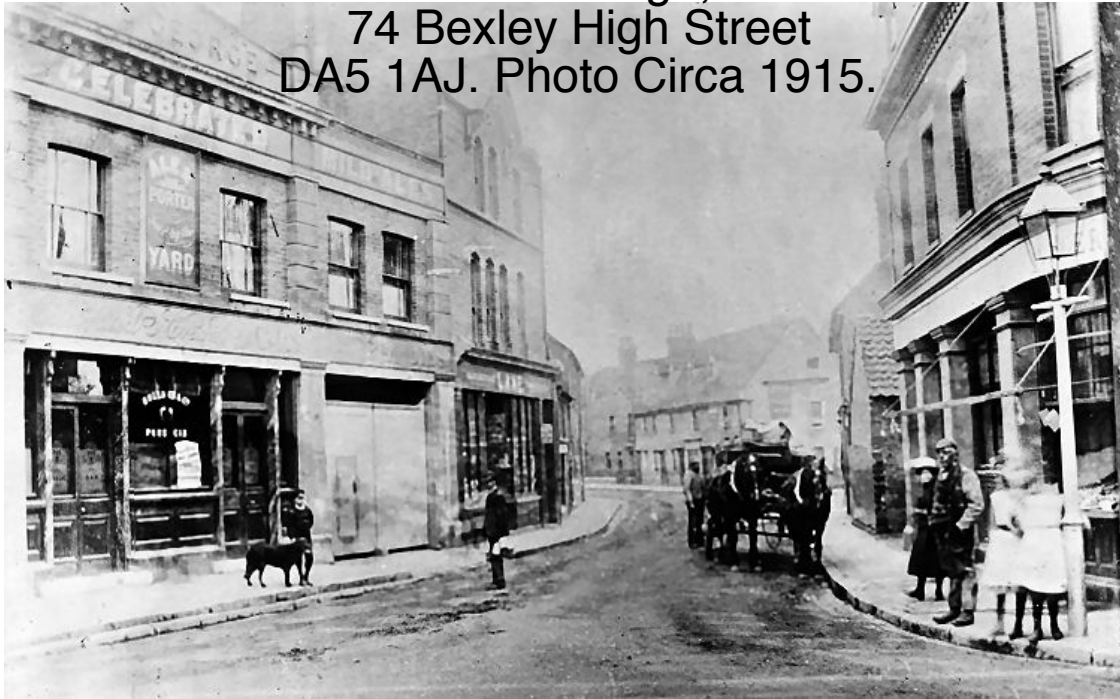
55 Lime Grove Ruislip HA4 8RL

www.smithcoldhamdesign.co.uk Tel. 0208 869 9681

Prepared by: Patrick Smith MCSD

19th October 2023

The George,
74 Bexley High Street
DA5 1AJ. Photo Circa 1915.



The original building can be traced back to the 1700s, but was rebuilt in 1878 and operated by Whitbread since 1891. It's also been a Hogshead tied pub and now (2020) Green King owned.

LICENSEE LIST

KING Henry 1832+

WYVER Henry 1861+ (age 50 in 1861)

STEEL William 1881+ (age 47 in 1881)

MOORE James 1903+

LIVETT Bert 1915-24

From the Pigot's Directory 1832-33-34

From the Kelly's Directory 1903

Census



ARCHITECTURAL CHARACTER

The George is an historic coach house which has been situated in the heart of old Bexley village since 1826, when James Monk was the first record publican.

Through the ages, the George has had an array of owners and now prides itself on being part of the Greene King family, established in 1799 and still producing award winning ales which we serve here today. Bexley is served by Bexley train station and most major routes are covered by the London Bus network, including the night buses, so getting to and from The George is effortless.

It is built in a traditional two storey style with box sash windows. The front main building is of painted render with timbered panelled mouldings at plinth level. The pitched slate roof is concealed behind a parapet and copping detail.

The roof features two london stock brick chimneys.

The rear of the building has a more recent single storey extension featuring a flat roof with timber and metal rear fire escape. There is a small external seating area besides the rear entrance.

It is a popular local pub. The Interior is open plan and customers can walk all the way around the bar servery. The overall ambience is light and airy the interior features rustic brick walls and oak floor boards. The Bar Counter has a mahogany timber top with painted timber raised and fielded panels.

The 'L' shaped bar area provides a central focus for the whole pub.

Traditional Beer Engine hand pumps have been installed, with an example of each offering placed by the respective hand pump. A good range of Cask Ales are available and Food is served all day. The menu is extensive, with Sunday roasts on offer.





Rear location for ramped access.



Rear seating area.



Rear Location for ramped access.

Summary and Conclusions

The proposed works are sympathetic to the overall character of the building and will provide wheelchair access to the compliant UA WC . for the benefit and enjoyment of its customers.

The small ramp to the rear area will have no detrimental effect on the building use and we believe the benefits to the customers outweigh this small change.