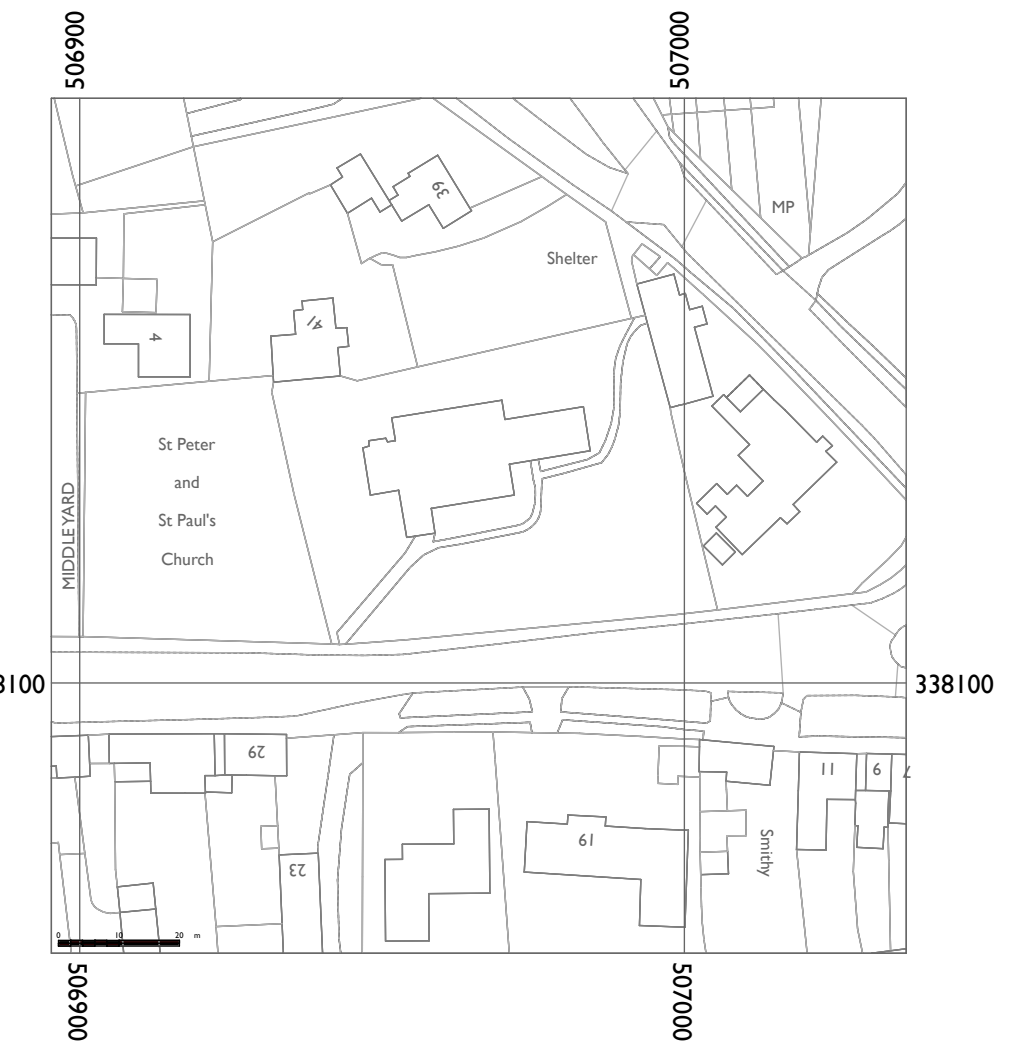


Routes of existing drains and services unknown.



location plan
scale 1:1250@a0

key

read in conjunction
with the
specification and
schedule of works.

site plan

scale 1:200@a1

ss. peter & paul • osbournby

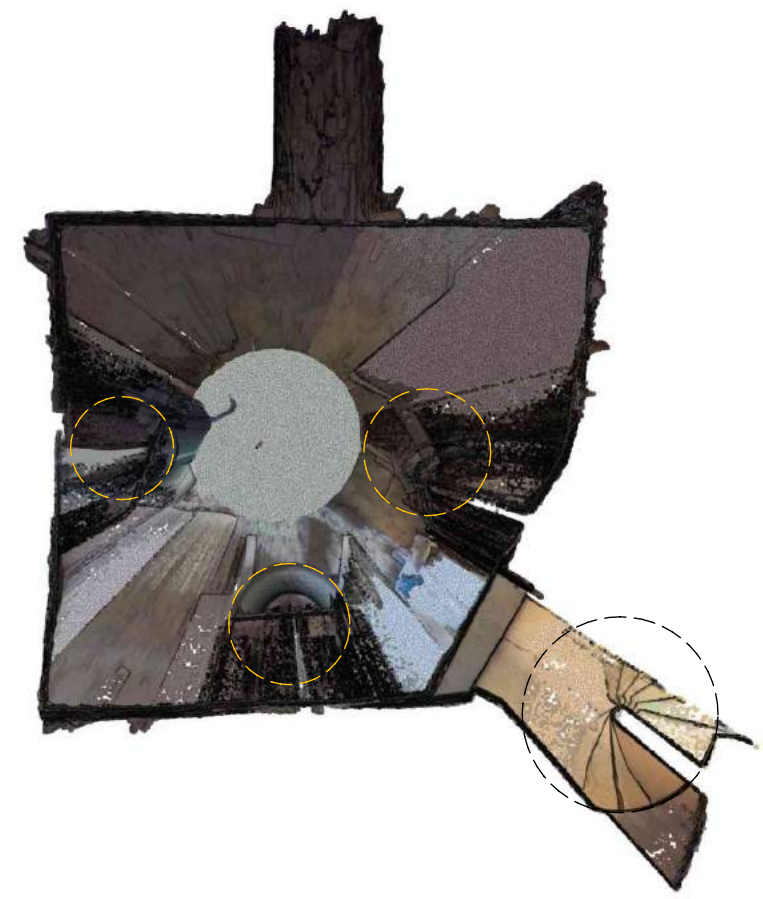
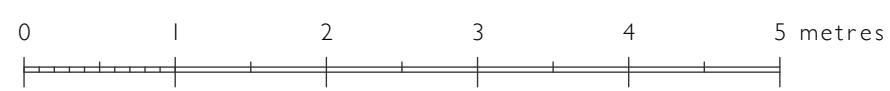
(c) Peter Rogan & Associates Limited, 46 St. Mary's Gate, Nottingham, NG1 1QA - April 2022

PR·A
 PETER ROGAN
 + ASSOCIATES LIMITED
 ARCHITECTS +
 HISTORIC
 BUILDINGS
 CONSULTANTS

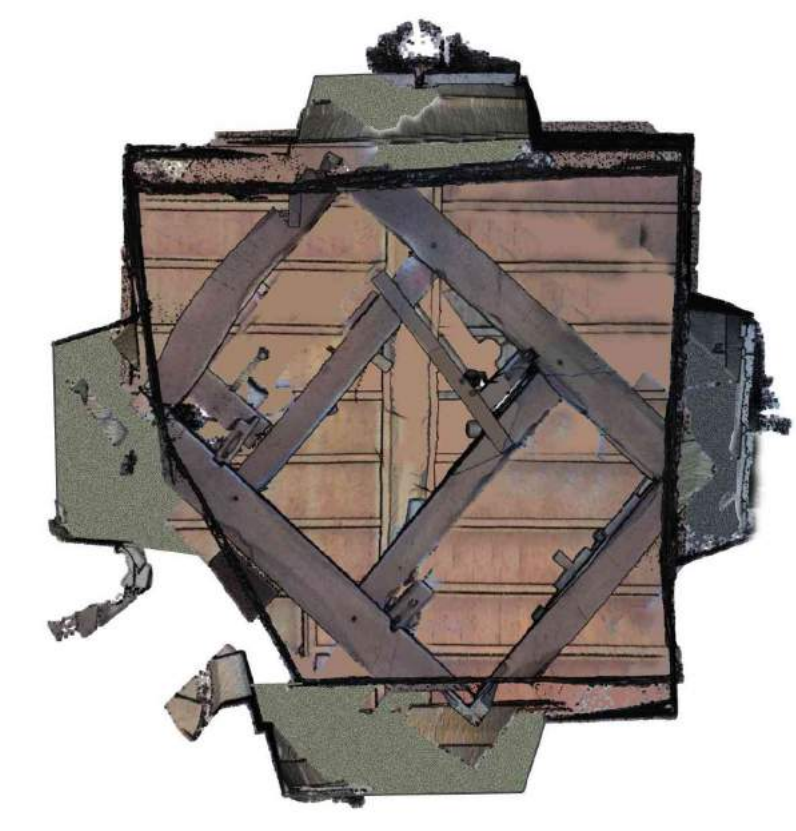


ground floor plan
scale 1:50@a1

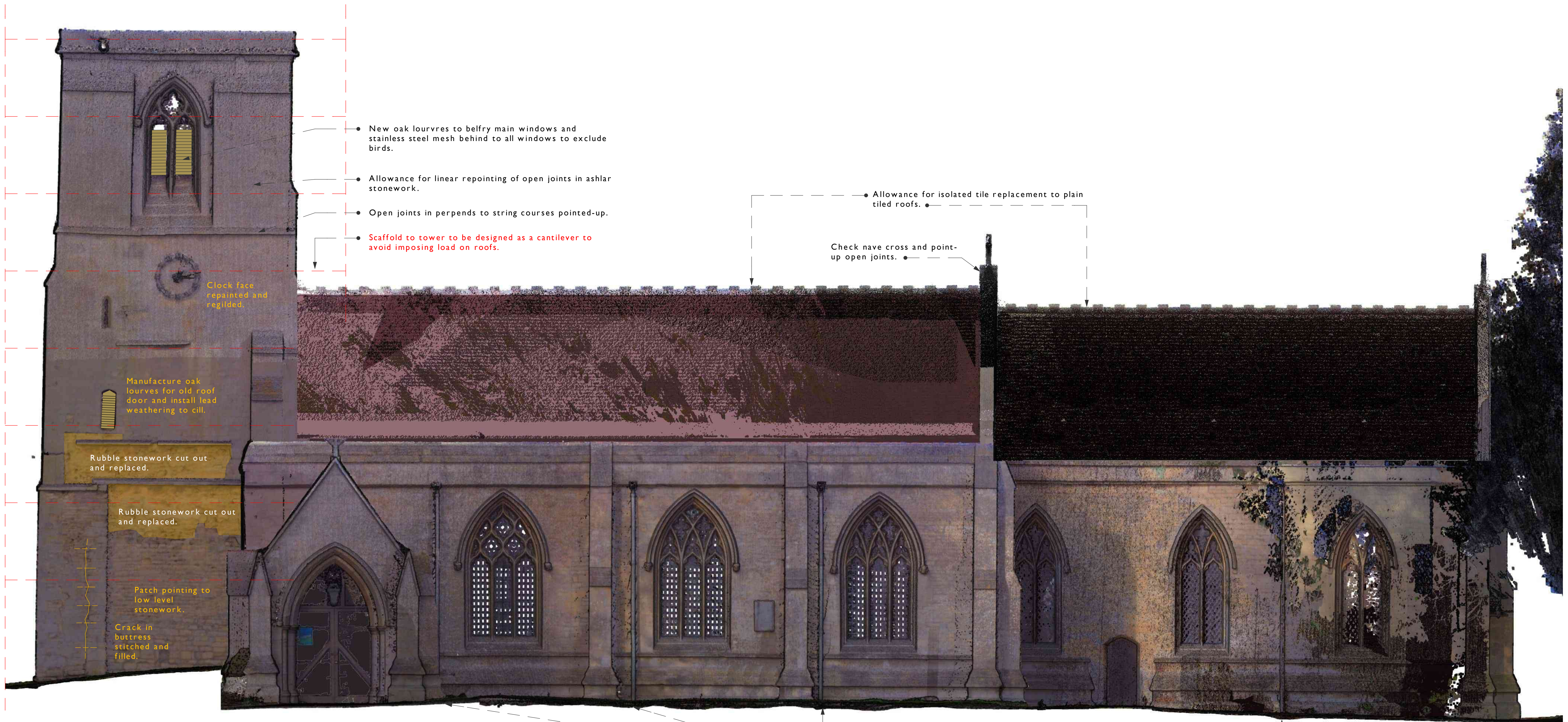
read in conjunction with the specification and schedule of works.



tower intermediate floorplan
scale 1:50@a1

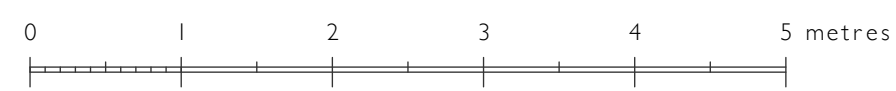


refelcted bellframe plan
scale 1:50@a1



south elevation

scale 1:50@a1



ss. peter & paul • osbournby

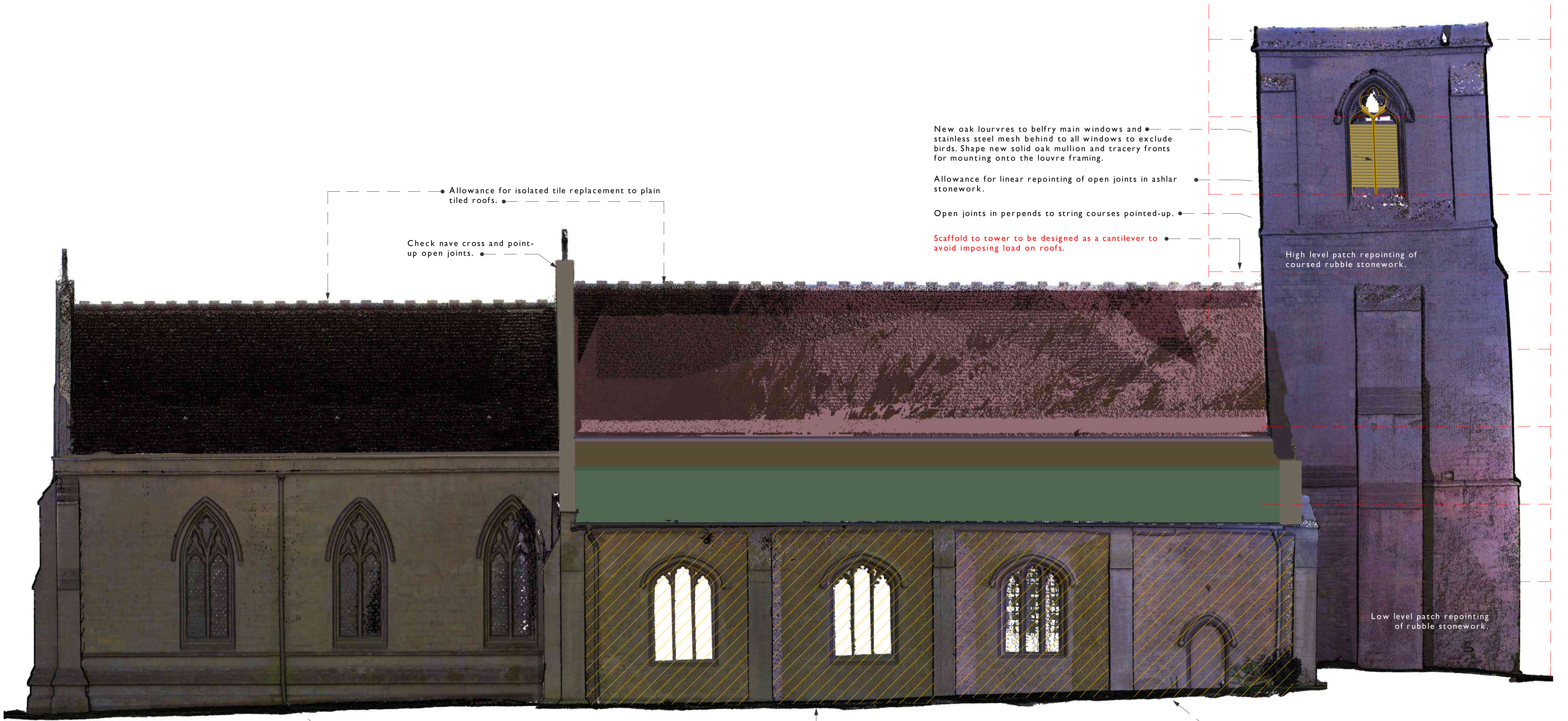
(c) Peter Rogan & Associates Limited, 46 St. Mary's Gate, Nottingham, NG1 1QA - April 2022

PR·A

PETER ROGAN
+ ASSOCIATES LIMITED

ARCHITECTS +
HISTORIC
BUILDINGS
CONSULTANTS

read in conjunction
with the
specification and
schedule of works.



• Allowance for isolated tile replacement to plain tiled roofs.

• Check nave cross and point-up open joints.

• New oak louveres to belfry main windows and stainless steel mesh behind to all windows to exclude birds. Shape new solid oak mullion and tracery fronts for mounting onto the louvre framing.

• Allowance for linear repointing of open joints in ashlar stonework.

• Open joints in perpend to string courses pointed-up.

• Scaffold to tower to be designed as a cantilever to avoid imposing load on roofs.

• High level patch repointing of coursed rubble stonework.

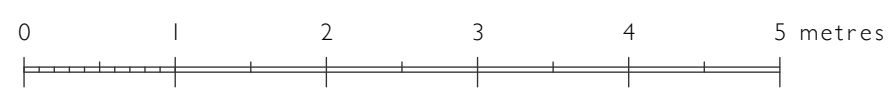
• Low level patch repointing of rubble stonework.

• 1 no. asbestos cement downpipe to be replaced with cast iron to each side of the chancel.

• To rubble stonework on the north aisle north wall allow for flush repointing; further provisional allowances for applying a lime render and limewashing with an ochre tinted limewash. Window surrounds and ashlar stonework to buttresses to be left as bare stone.

• 2 no. asbestos cement downpipes and asbestos cement gutters to be replaced with cast iron to the north aisle.

north elevation
scale 1:50@a1



ss. peter & paul • osbournby

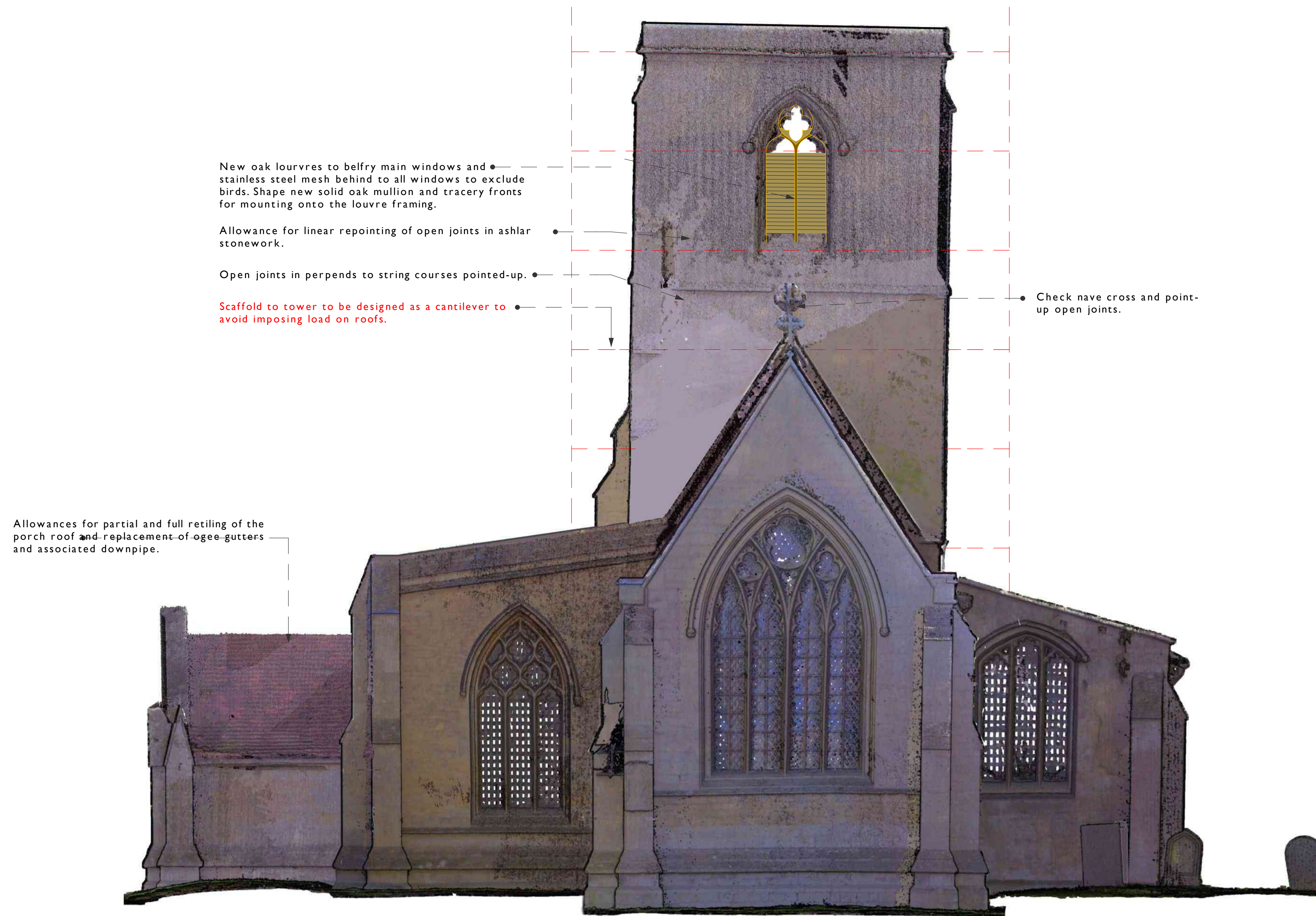
(c) Peter Rogan & Associates Limited, 46 St. Mary's Gate, Nottingham, NG1 1QA - April 2022

PR·A

PETER ROGAN
+ ASSOCIATES LIMITED

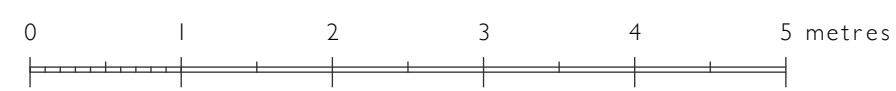
ARCHITECTS +
HISTORIC
BUILDINGS
CONSULTANTS

read in conjunction
with the
specification and
schedule of works.



east elevation

scale 1:50@a1



ss. peter & paul • osbournby

(c) Peter Rogan & Associates Limited, 46 St. Mary's Gate, Nottingham, NG1 1QA - April 2022

PR·A

PETER ROGAN
+ ASSOCIATES LIMITED

ARCHITECTS +
HISTORIC
BUILDINGS
CONSULTANTS

read in conjunction
with the
specification and
schedule of works.



New oak louveres to belfry main windows and stainless steel mesh behind to all windows to exclude birds. Shape new solid oak mullion and tracery fronts for mounting onto the louvere framing.

Allowance for linear repointing of open joints in ashlar stonework.

Open joints in perpends to string courses pointed-up.

Allowances for partial and full retiling of the porch roof and replacement of ogee gutters and associated downpipe.

Low level patch repointing of rubble stonework to the south aisle west wall.

Steel anti-climb hoardings and scaffold alarms to scaffolding to the tower exterior.

west elevation

scale 1:50@a1



ss. peter & paul • osbournby

(c) Peter Rogan & Associates Limited, 46 St. Mary's Gate, Nottingham, NG1 1QA - April 2022

PR·A

PETER ROGAN
+ ASSOCIATES LIMITED

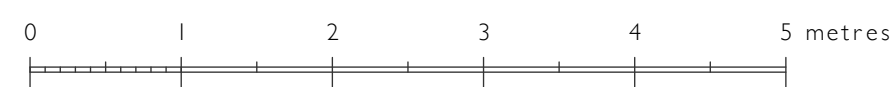
ARCHITECTS +
HISTORIC
BUILDINGS
CONSULTANTS

read in conjunction
with the
specification and
schedule of works.



internal long section north

scale 1:50@a1



ss. peter & paul • osbournby

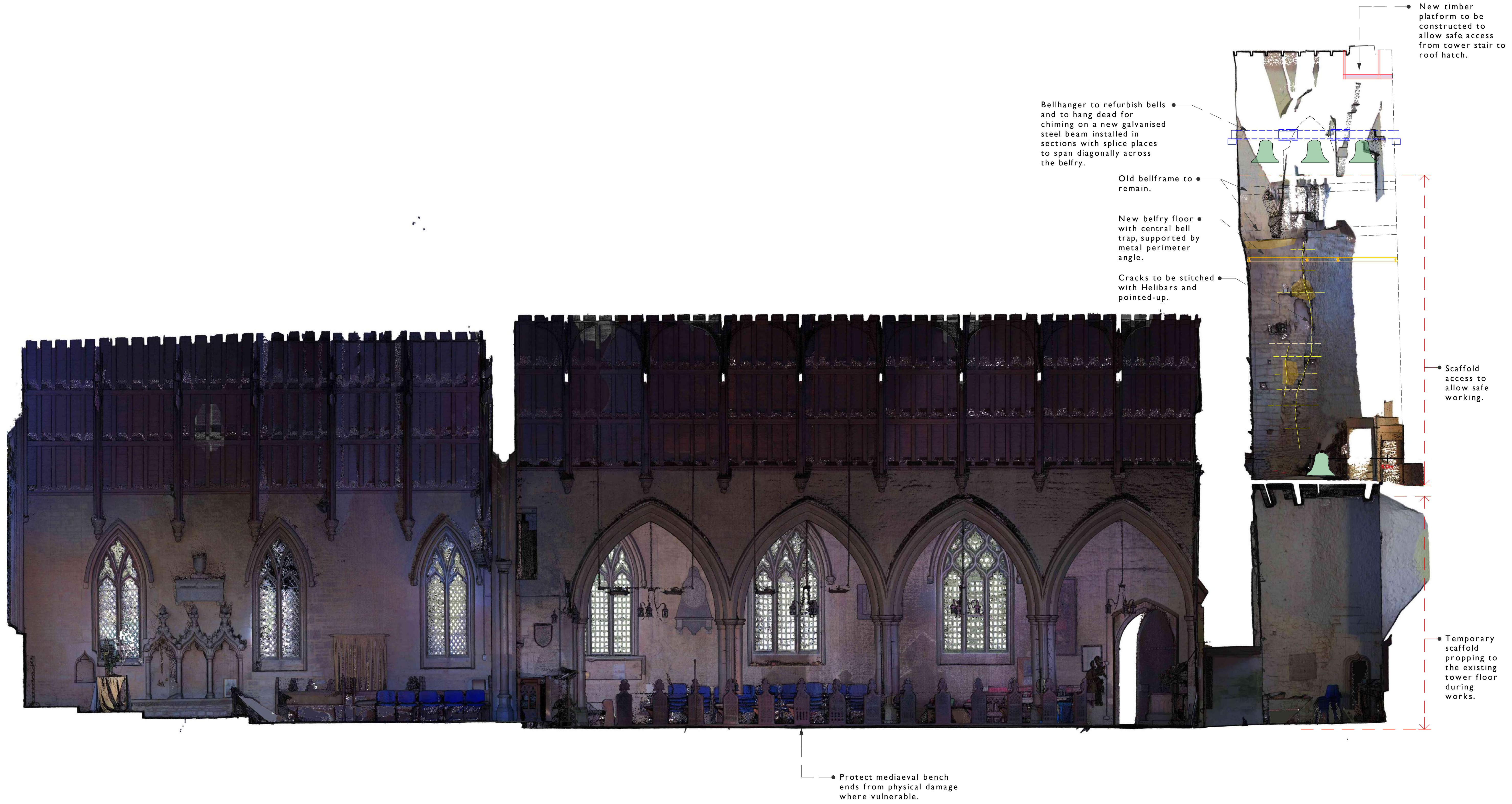
(c) Peter Rogan & Associates Limited, 46 St. Mary's Gate, Nottingham, NG1 1QA - April 2022

PR·A

PETER ROGAN
+ ASSOCIATES LIMITED

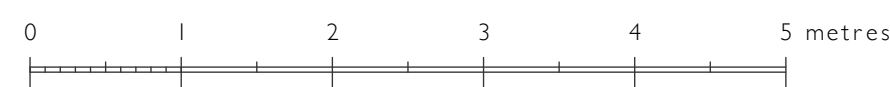
ARCHITECTS +
HISTORIC
BUILDINGS
CONSULTANTS

read in conjunction
with the
specification and
schedule of works.



internal long section south

scale 1:50@a1



ss. peter & paul • osbournby

(c) Peter Rogan & Associates Limited, 46 St. Mary's Gate, Nottingham, NG1 1QA - April 2022

PR·A

PETER ROGAN
+ ASSOCIATES LIMITED

ARCHITECTS +
HISTORIC
BUILDINGS
CONSULTANTS

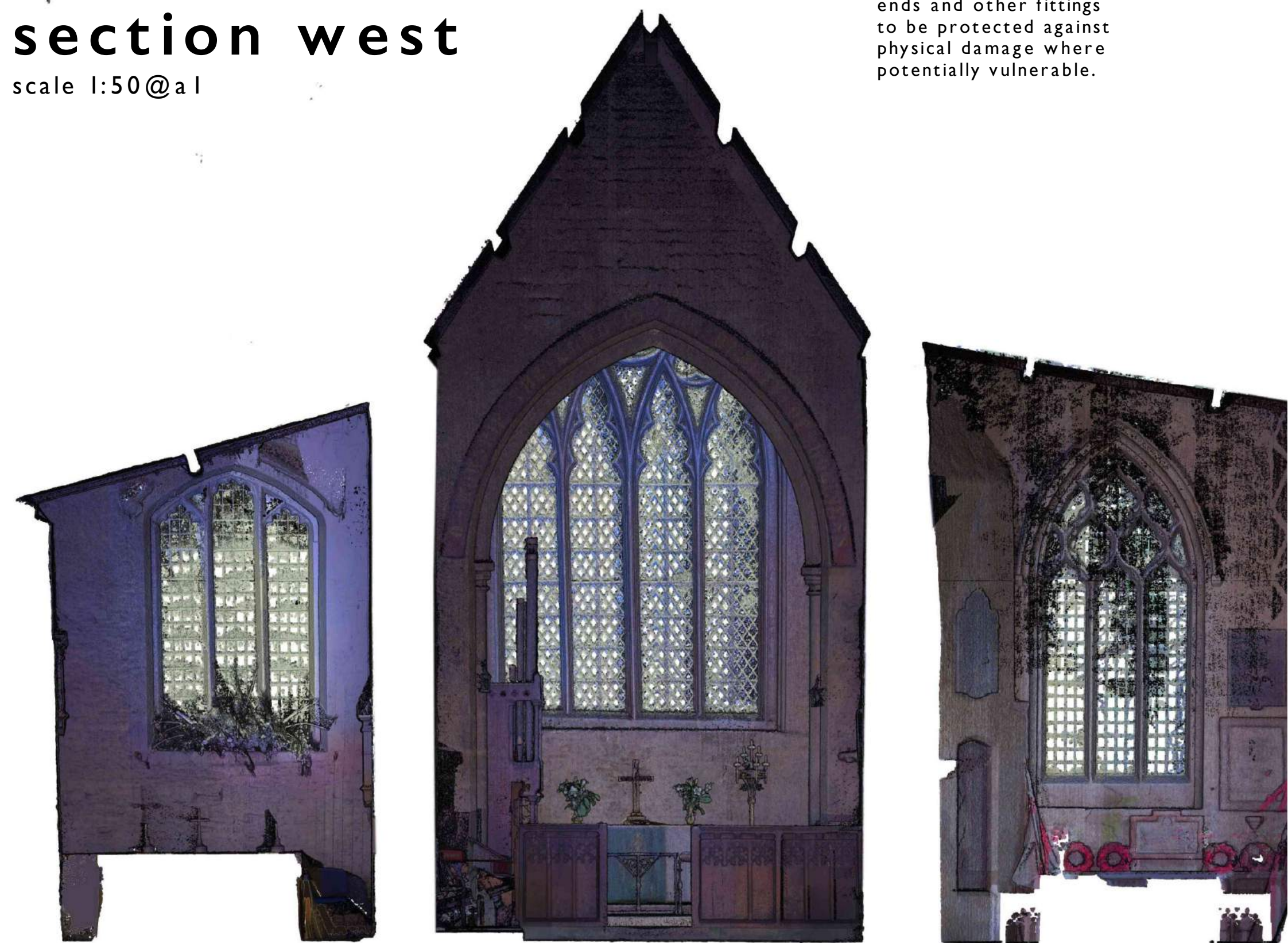
read in conjunction
with the
specification and
schedule of works.



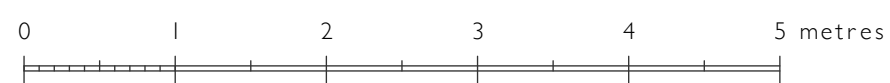
section west
scale 1:50@a1

• Font, mediaeval bench ends and other fittings to be protected against physical damage where potentially vulnerable.

• Flag/standard to be protected from dust during works.



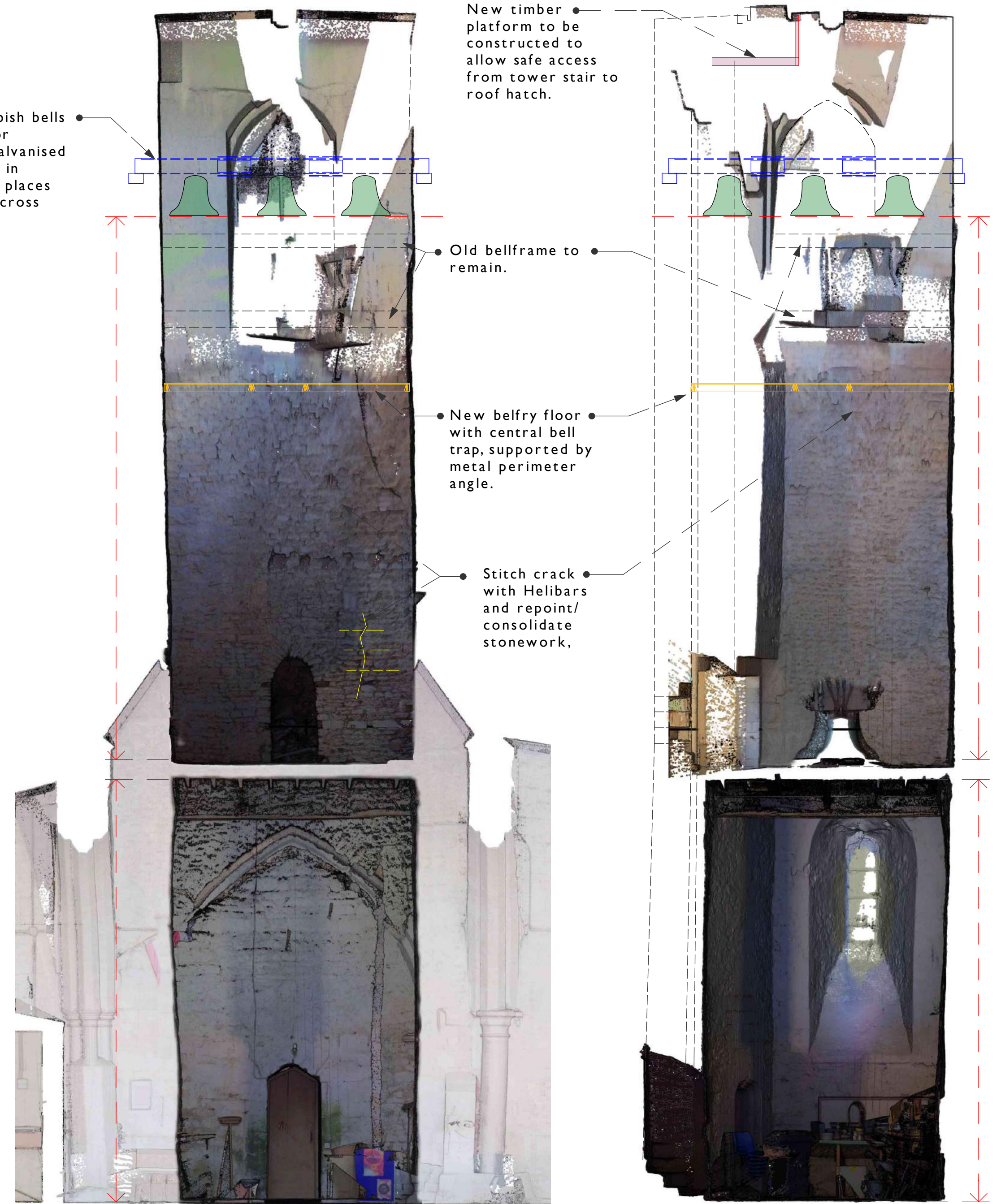
section east
scale 1:50@a1



ss. peter & paul • osbournby

(c) Peter Rogan & Associates Limited, 46 St. Mary's Gate, Nottingham, NG1 1QA - April 2022

Bellhanger to refurbish bells and to hang dead for chiming on a new galvanised steel beam installed in sections with splice places to span diagonally across the belfry.



New timber platform to be constructed to allow safe access from tower stair to roof hatch.

Old bellframe to remain.

New belfry floor with central bell trap, supported by metal perimeter angle.

Stitch crack with Helibars and repoint/consolidate stonework.

tower east
scale 1:50@a1

tower west
scale 1:50@a1

PR.A

PETER ROGAN
+ ASSOCIATES LIMITED

ARCHITECTS +
HISTORIC
BUILDINGS
CONSULTANTS

read in conjunction
with the
specification and
schedule of works.