



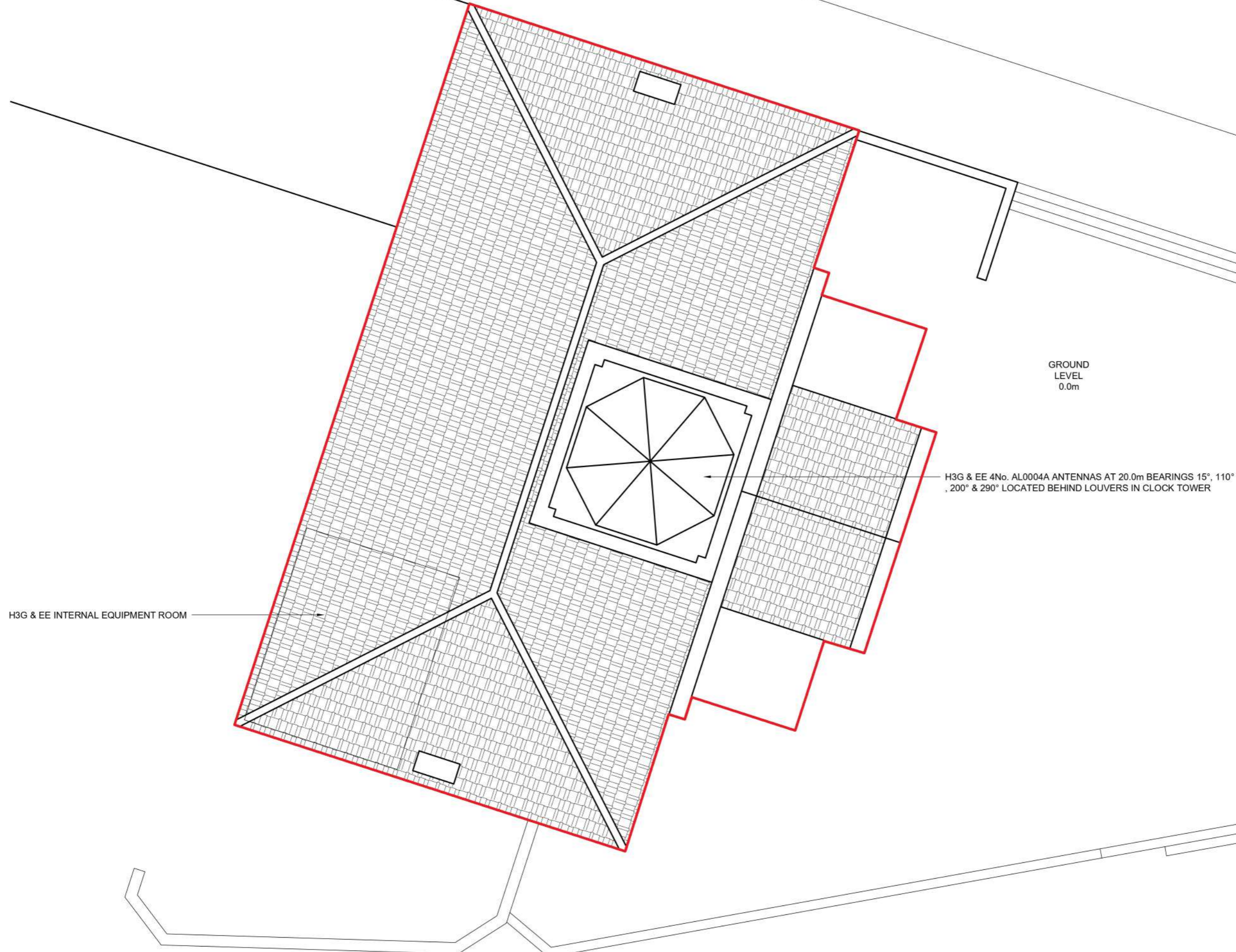
©2020 Cellnex
 All rights reserved. No part of this publication may be reproduced, stored in a retrieval system or transmitted in any form or by any means (Electronic, Mechanical, Photocopying, Recording or otherwise), without the prior written consent of the Company.

NOTES
UNDERGROUND SERVICES
 UNDERGROUND SERVICES ARE INDICATIVE ONLY. POSITIONS SHOULD BE CONFIRMED ON SITE PRIOR TO ANY DEVELOPMENT

- DRAINAGE ---
- DUCTS ---
- FEEEDERS ---
- FENCE PLAN ---
- GAS ---
- LIGHTNING PROTECTION - EARTHING ---
- POWER ---
- SERVICES UNKNOWN ---
- TELECOMS ---
- WATER ---

- ACCESS ARRANGEMENTS**
 KEYS:-
- AROIVA GATE KEY △
 - B KEY △
 - C KEY △
 - LEGGE KEY △

SURVEY REQUIRED TO CONFIRM ACCESS KEYS FOR REMAINING ROOMS AND SITE ENTRANCE



H3G & EE INTERNAL EQUIPMENT ROOM

H3G & EE 4No. AL0004A ANTENNAS AT 20.0m BEARINGS 15°, 110°, 200° & 290° LOCATED BEHIND LOUVERS IN CLOCK TOWER

GROUND LEVEL
0.0m

ISS	REVISION	DATE	DRN	APP
2	COM-0013774 PLANNING ISSUE	05/09/23	HFC	HFC
1	229339 MASTER CREATION	26/06/20	MCD	MF

cellnex
driving telecom connectivity

CELLNEX UK
 R+, 4TH FLOOR, 2 BLAGRAVE STREET, READING, RG1 1AZ
 Tel. 020 4526 8553

SITE No **302793**
PETERHEAD BROAD STREET
TOWN HOUSE
BROAD STREET
PETERHEAD
ABERDEENSHIRE
AB42 1BY

NGR **NK 13432 46105**
 OS GRID **413432 846105**

TITLE
SITE PLAN
EXISTING

SCALE **1:100**

DRAWN	MCD	26/06/20
APPROVED	HFC	05/09/23

DRG No.	Sheet 1 of 1	Rev
302793-00-000-MD002		2