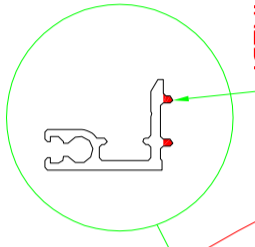


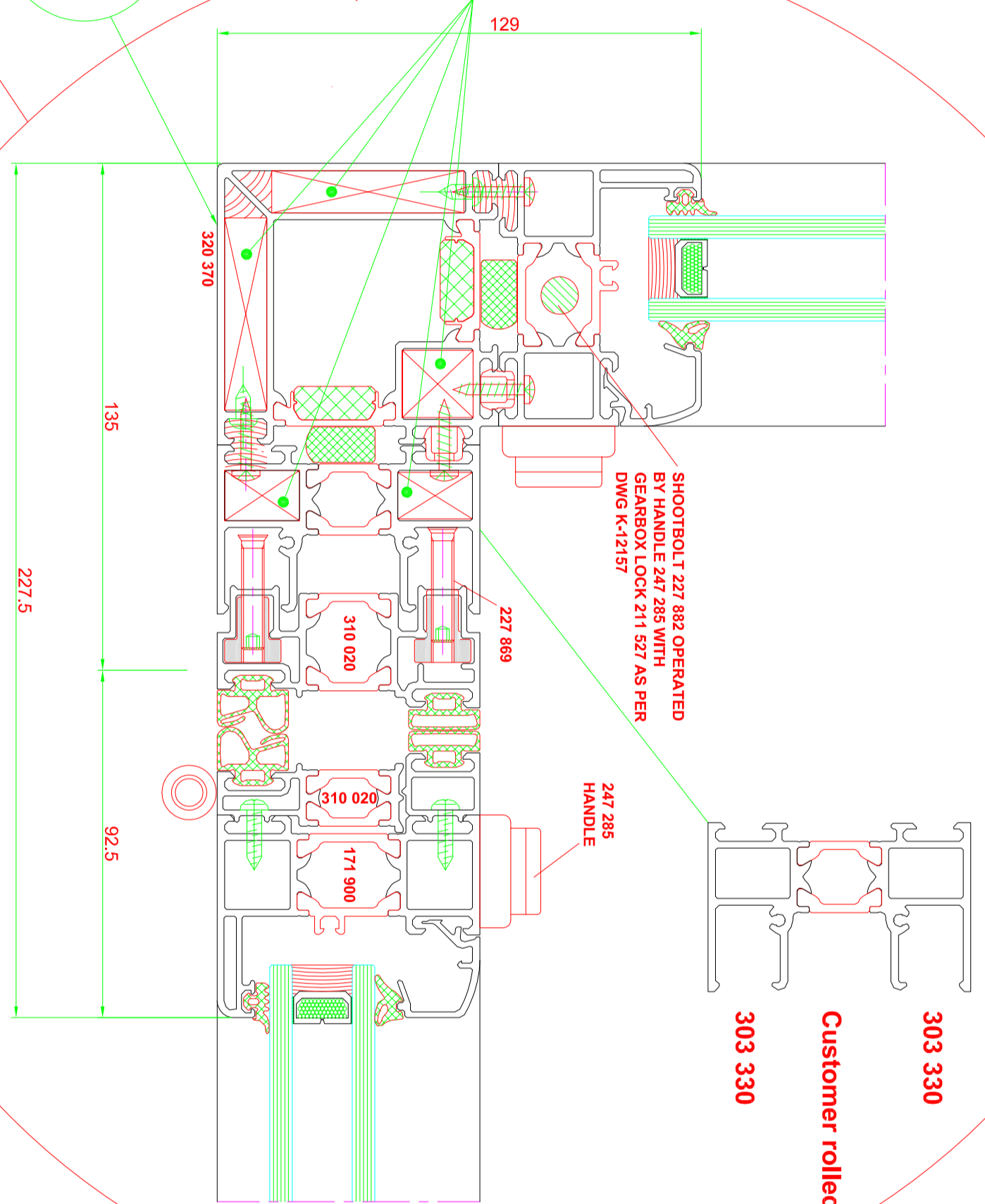
ALUMINUM BLOCKS INSERTED INTO VOIDS TOP AND BOTTOM 50mm DEEP, SECURED WITH 2 PART EPOXY RESIN AND SCREW FIXED. REMAINING VOIDS SEALED WITH SILICONE SEALANT. BRUSH CARRIER RAIL TO BE SCREW FIXED INTO THESE BLOCKS.

NIBS OF BRUSH CARRIER TO BE MACHINED OFF WHERE CARRIER PASSES UNDER CORNER MULLION AS REQUIRED.

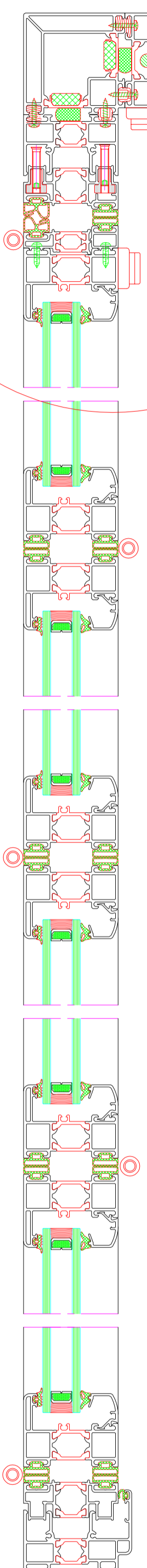
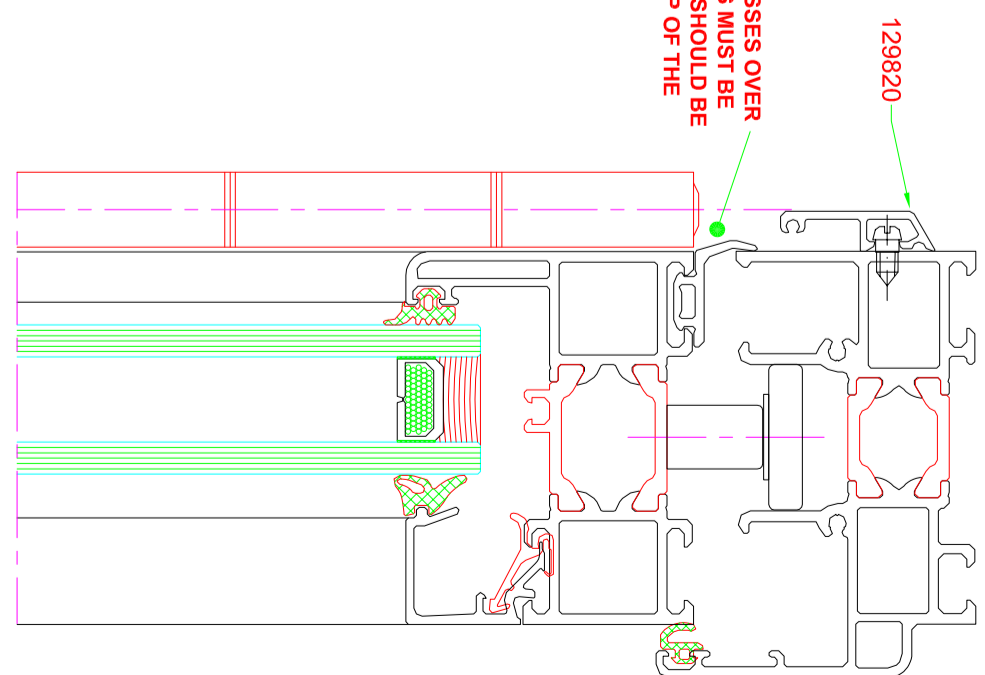


**PLAN ELEVATION**

**ASS70FD CORNER MULLION PROPOSAL**



WHERE GASKET PASSES OVER CORNER POST LEGS MUST BE REMOVED. GASKET SHOULD BE BONDED TO THE TOP OF THE CORNER POST.

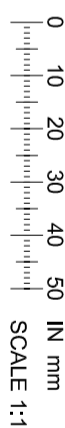


Drawing must be checked by user.

The SCHÜCO fabrication guidelines are to be observed.

Joint material must be designed according to individual installation, structural analysis and standards applicable.

Direct contact between aluminum and steel profiles has to be avoided with the use of sealing or barrier tapes.



All dimensions, angles contained in this drawing, profiles sizes, fitting and accessories for the structure must be checked by the fabricator, who has to observe in the manufacture the SCHÜCO fabrication procedures. Any responsibility of SCHÜCO for the accuracy, practicality or meeting the requirements of the project concerned is excluded. Ownership, copyright and all similar rights in the SCHÜCO design and drawings shall at all times remain only and exclusively with SCHÜCO. No drawings or other technical information of SCHÜCO may be disclosed to a user by any third parties in all or part except with SCHÜCO's prior written consent, or use for any other purpose than the project for which the drawing has been made. SCHÜCO reserve the right to modify drawings and sections without prior notice.

REVISION	AMENDMENT	DATE

© Copyright Schuco International, All rights reserved.

Project: \_\_\_\_\_  
 Architect: \_\_\_\_\_

Description: **DESIGN INTENT**

CAD Format: **AUTOCAD** Fabricator: \_\_\_\_\_  
 Drawn: **10/01/13 JS** File No: \_\_\_\_\_ System: **ASS70FD**  
 Checked: \_\_\_\_\_  
 Passed: \_\_\_\_\_

**SCHÜCO** SCHÜCO INTERNATIONAL KC  
 TEL: 01908 282111  
 WHITEHALL AVENUE, KINGSTON,  
 MILTON KEYNES, BUCKS, MK10 0AL

Scale: **NTS** Drawing No: **POS0115A-L-13-005** Replacement for: \_\_\_\_\_

All dimensions and angles should be checked by the fabricator and finalised in accordance with the obligatory allowance

Selection of profile sizes in accordance with design criteria and final structural analysis all to be carried out by STRUCTURAL ENGINEER employed by fabricator.

All "hair line" mite, toe and butt joints to be sealed in accordance with SCHÜCO guidelines.