

Plant Schedule

Species Name	Girth	Height	Density	Specification	No.
Corvus avellana	60-80cm	0.5Cr	Double Staggered at 0.3m offset	+2 : Branched : B : Planted and maintained as hedge	194
Prunus spinosa	80-100cm	0.5Cr	Double Staggered at 0.3m offset	+1 : Transplant : B : Planted and maintained as hedge	155
Crataegus monogyna	100-125cm	0.5Cr	Double Staggered at 0.3m offset	+1 : Transplant : B : Planted and maintained as hedge	194
Carpinus betulus	100-150cm	0.5Cr	Double Staggered at 0.3m offset	+2 : Transplant : B : Planted and maintained as hedge	155
Carpinus betulus	100-150cm	0.3Cr		+2 : Transplant : B : Planted and maintained as hedge	25
Sorbus aria 'Majestica'	12-14cm	350-425cm	Counted	Heavy Standard : Clear Stem min. 200 : RB	6
Prunus 'Sunset Boulevard'	12-14cm	350-425cm	Counted	Heavy Standard : Clear Stem min. 200 : RB	6
Tilia cordata	16-18cm	400-450cm	Counted	Extra Heavy Standard : Clear Stem min. 200 : 5 brks : BR4	4

Species Name	Height	Pot Size	Specification	Density	No.
Pinus nigra	400-450cm		Leader & laterals : RB	Counted	3

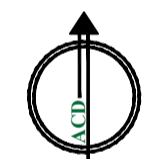
Species Name	Height	Pot Size	Specification	Density	No.
Ceanothus 'Gloire de Versailles'	40-60cm	3L	Leader With Laterals : 3 brks : C	4/m ²	40
Cistus corbariensis	30-40cm	3L	Bushy : 4 brks : C	4/m ²	40
Cistus purpureus 'Alan Fradd'	30-40cm	3L	Bushy : C	4/m ²	3
Cornus sanguinea	60-80cm		+2 : Branched : 3 brks : B : Planted and maintained as hedge	0.5Cr Double Staggered at 0.3m offset	77
Escallonia 'Apple Blossom'		5-7.5L	Bushy : C	0.5Cr Double Staggered at 0.3m offset	97
Euonymus fortunei 'Emerald Gaiety'	30-40cm	3L	Bushy : 7 brks : C	4/m ²	54
Hebe 'Midsummer Beauty'	30-40cm	3L	Bushy : 5 brks : C	4/m ²	40
Hebe pinguifolia 'Pagei'	30-40cm	3L	Bushy : C	4/m ²	5
Hydrangea arborescens 'Annabelle'	40-60cm	3L	Branched : 3 brks : C	4/m ²	26
Lavandula angustifolia 'Twickel Purple'	30-40cm	5-7.5L	Bushy : 7 brks : C	5/m ²	3
Potentilla fruticosa 'Abbotswood'	30-40cm	5-7.5L	Bushy : 5 brks : C	4/m ²	3
Rosmarinus off. 'Miss Jessop's Upright'	30-40cm	3L	Bushy : 4 brks : C	4/m ²	40
Salvia officinalis 'Purpurascens'	20-30cm	3L	Branched : 5 brks : C	5/m ²	46
Santolina chamaecyparissus 'Lemon Queen'	30-40cm	3L	Bushy : C	4/m ²	22
Sarcococca hookeriana	20-30cm	3L	Bushy : 6 brks : C	4/m ²	62
Spiraea japonica 'Goldflame'	40-60cm	3L	Bushy : 7 brks : C	4/m ²	33
Viburnum tinus 'Gwenllian'	40-60cm	5-7.5L	Bushy : 5 brks : C	Counted	2
Weigela florida 'Folius Purpureis'	40-60cm	3L	Branched : 4 brks : C	4/m ²	26

Species Name	Height	Pot Size	Specification	Density	No.
Clematis cirrhosa			Counted		1
Trachelospermum jasminoides			Counted		2

Species Name	Height	Pot Size	Specification	Density	No.
Carex pendula	3L	Bushy : C	3/m ²	5	5

Legend

- Existing trees to be retained and protected during construction
- Proposed tree planting within soft landscape. See detail
- Proposed specimen shrub planting to receive short angular staking on half standards with expandable tree ties.
- Proposed climbing plants to be trained up adjacent wall fence with galvanised wires and hook set 250mm apart with support canes removed prior to planting
- Proposed Escallonia 'Apple Blossom' hedge planting to be planted in a double staggered row 300mm apart and at 500mm centres in each row. To be maintained at 1m height
- Proposed instant mixed native hedgerow planting. To be maintained at 1.5m height
- Proposed shrub planting to receive 75mm bark mulch after planting operations
- Proposed decorative mix shrub planting to be planted in groups of 5-7no. of each species and as above
- Proposed grass areas to receive good quality amenity grass turves laid in line with good horticultural practices
- Proposed grassland areas, to be seeded with Special General Purpose Meadow Mixture EM3 as supplied by Emorsgate Seeds and sown at 4g/m² or similar and approved



Rev	Date	Details	Drawn
E	24.02.22	Boundary elements change	AC
D	06.09.21	Layout change	IS
C	14.12.20	Layout change	HCS
B	12.11.20	Layout change	HCS
A	04.02.19	Layout change	IS
Rev	Date	Details	Drawn

ACD ENVIRONMENTAL

HEAD OFFICE
Rodbourne Rail Business Centre, Grange Lane,
Malmesbury, SN16 0ES
Tel: 01666 825646

Courtyard House, Mill Lane, Godalming, GU7 1EY
Tel: 01483 425714

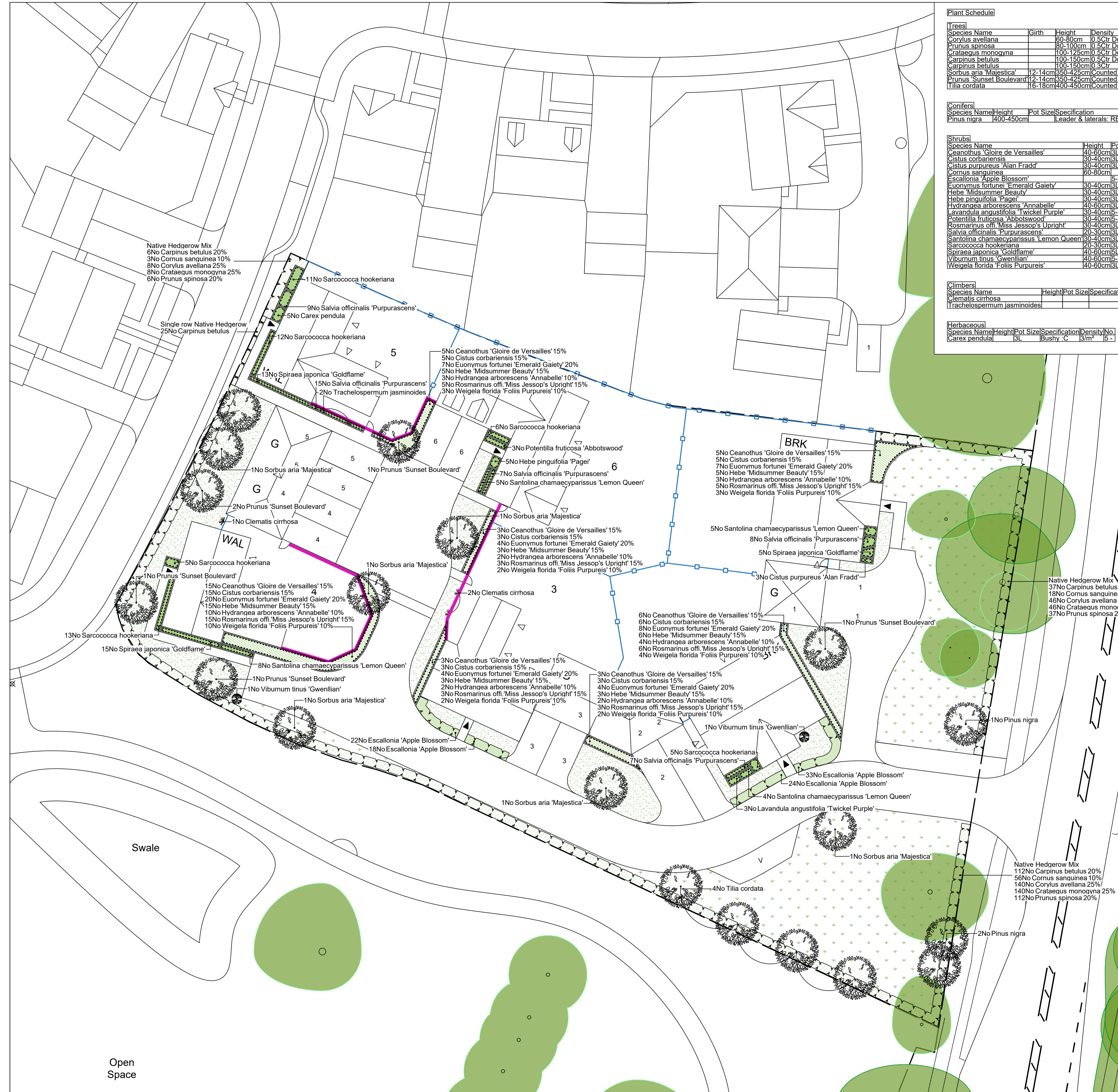
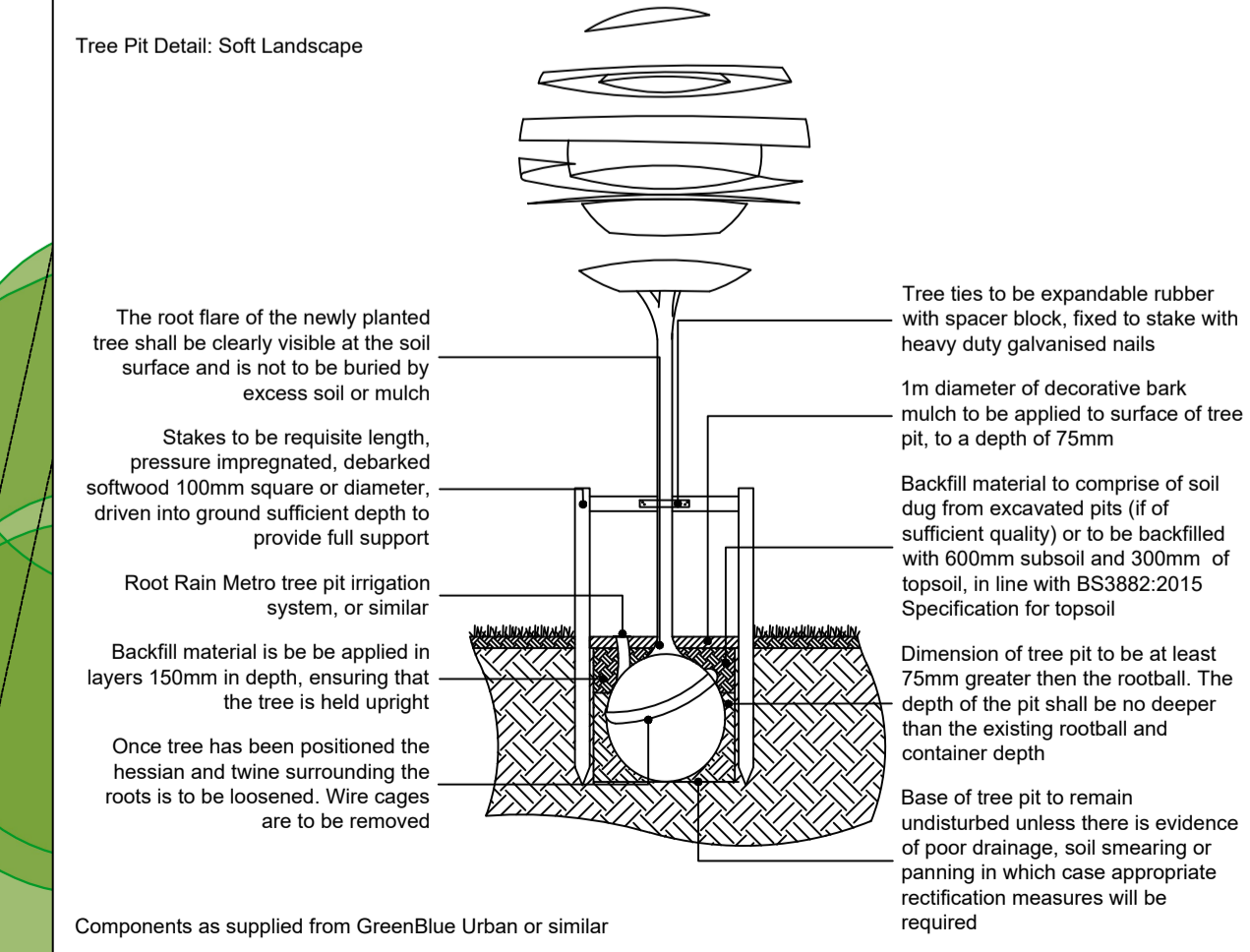
Suite 6, Crescent House, Yonge Close, Eastleigh, SO50 9SX
Tel: 02382 026300

email: mail@acdenv.co.uk
www.acdenvironmental.co.uk

KIER

scheme: Thornbrook House,
Stoke Mandeville
client: KIER Living
drawing: Soft Landscape Proposals
date: Jan 2018
scale: 1:200@A1
drawing no: KIER22291 - 11E
drawn: IS checked: HS

Copyright of ACD Environmental Ltd. All rights described in Chapter IV of the Copyright, Designs and Patents Act 1988 have been generally asserted. 2011. Copyright of this plan remains with ACD until all fees have been paid in full.



Open Space