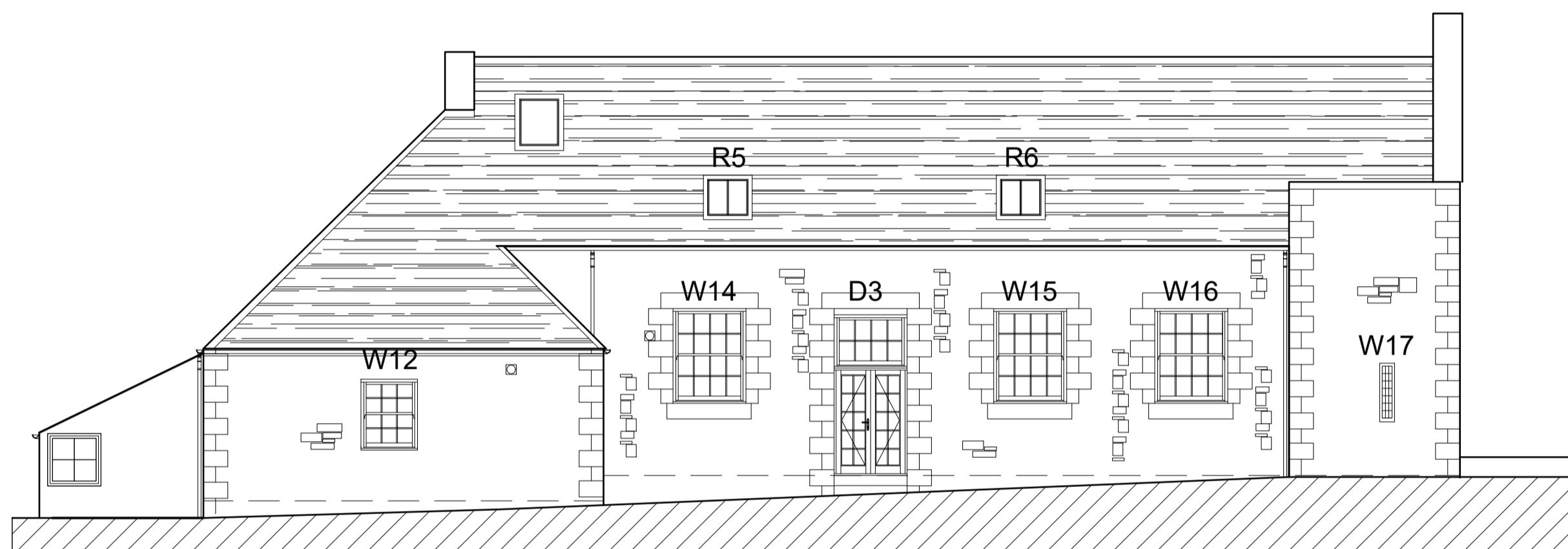


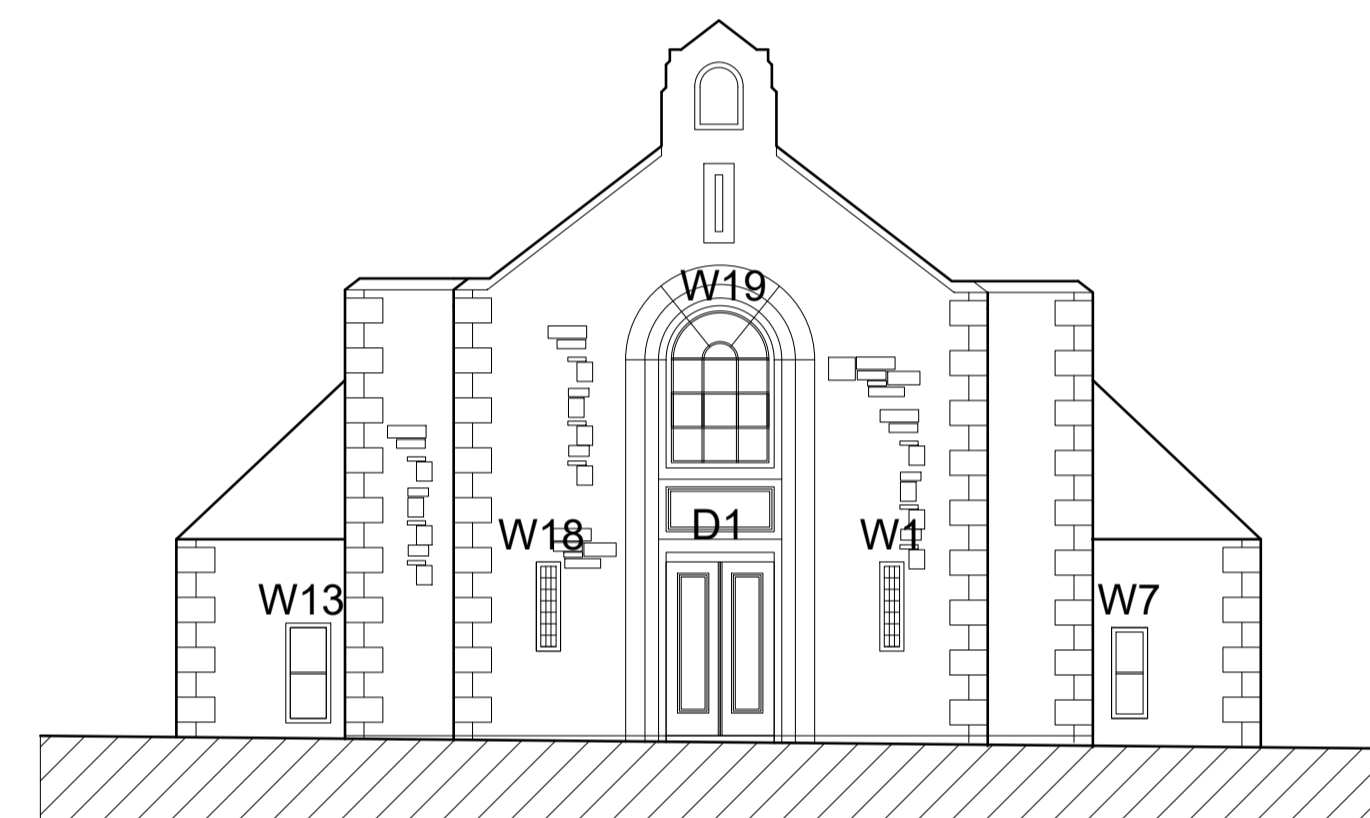
WEST ELEVATION  
SCALE 1:50



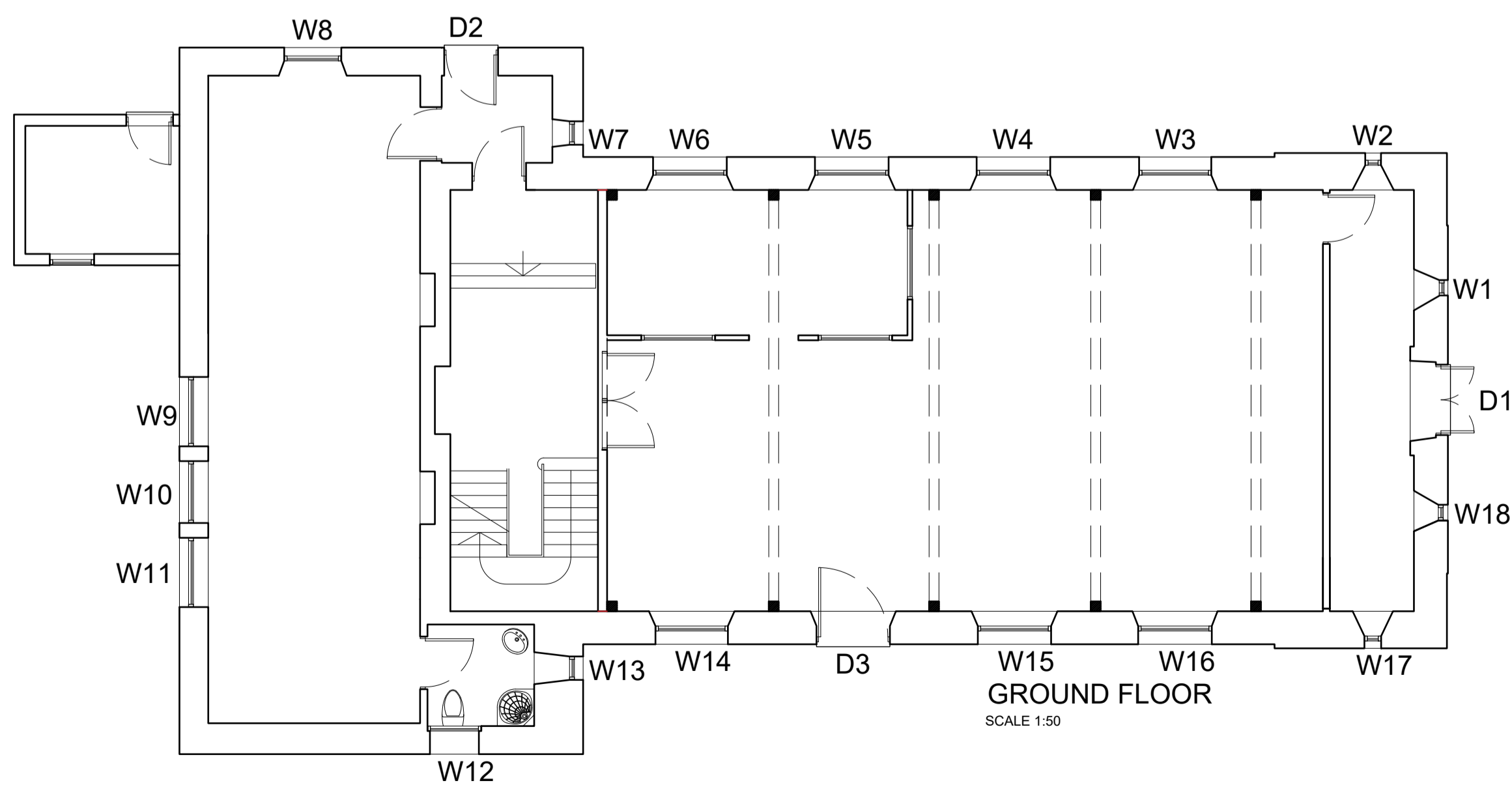
SOUTH ELEVATION  
SCALE 1:50



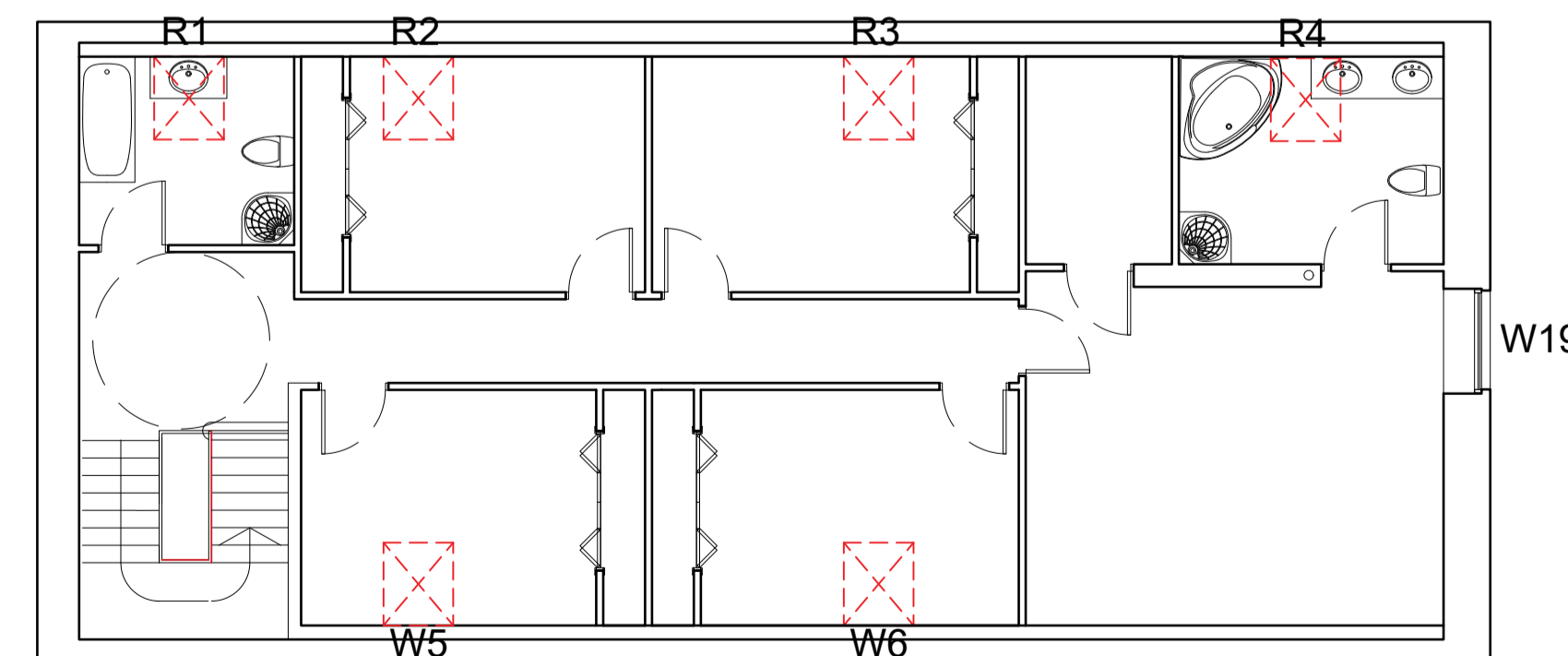
EAST ELEVATION  
SCALE 1:50



NORTH ELEVATION  
SCALE 1:50



GROUND FLOOR  
SCALE 1:50



FIRST FLOOR  
SCALE 1:50

REF	LOCATION	WXH	OPERATION	TYPE
D1	North Elevation	1430 x 2300	-	To remain as Existing
D2	West Elevation	1090 x 1950	-	To remain as Existing
D3	East Elevation	1435 x 2200	-	Black Softwood Open in French Doors with 1435 x 1090 Fanlight above
W1	North Elevation	440 x 1200	Fixed	Casement Window (Obscure Glazing)
W2	West Elevation	440 x 1200	Fixed	Casement Window (Obscure Glazing)
W3	West Elevation	1490 x 1890	Openable	Cords & Weight Sash Window
W4	West Elevation	1490 x 1890	Openable	Cords & Weight Sash Window
W5	West Elevation	1490 x 1890	Openable	Cords & Weight Sash Window
W6	West Elevation	1490 x 1890	Openable	Cords & Weight Sash Window
W7	West Elevation	440 x 1200	Fixed	Casement Window
W8	West Elevation	1255 x 1141	Openable	Cords & Weight Sash Window
W9	South Elevation	1585 x 1941	Openable	Cords & Weight Sash Window
W10	South Elevation	1585 x 1941	Openable	Cords & Weight Sash Window
W11	South Elevation	1585 x 1941	Openable	Cords & Weight Sash Window
W12	East Elevation	1180 x 1001	Openable	Cords & Weight Sash Window (Obscure Glazing)
W13	East Elevation	440 x 1200	Fixed	Casement Window (Obscure Glazing)
W14	East Elevation	1490 x 1890	Openable	Cords & Weight Sash Window
W15	East Elevation	1490 x 1890	Openable	Cords & Weight Sash Window
W16	East Elevation	1490 x 1890	Openable	Cords & Weight Sash Window
W17	East Elevation	440 x 1200	Fixed	Casement Window (Obscure Glazing)
W18	North Elevation	440 x 1200	Fixed	Casement Window (Obscure Glazing)
W19	North Elevation	1435 x 2180	Fixed	Casement Window

**CORD & WEIGHT SASH WINDOWS**

FRAME MATERIAL: FJL SOFTWOOD WITH RAL9005 JET BLACK FINISH  
GLAZING: 4MM - 20 - 4MM SOFT COAT WITH LOW EMISSIVITY COATING AND ARGON GAS  
HARDWARE: CHROME PULLEYS, GRAPHITE SASH LIFT, AND VENTLOCK GRAPHITE BARS AND GRILLES: 25MM BONDED BAR AND 18MM GRILLES (TIMBER/COMPOSITE)  
FRAME: VSSCW 160MM WITH 4MM PLY BACK LININGS  
ADDITIONAL FEATURES: TV90 VENT (SATIN, 425MM), 53MM MID RAIL, BLACK WEATHERSTRIPPING  
MINIMUM U-VALUE REQUIREMENT: 1.4

**CASEMENT TIMBER WINDOWS**

FRAME MATERIAL: FJL SOFTWOOD WITH RAL9005 JET BLACK FINISH  
GLAZING: 4MM - 20 - 4MM SOFT COAT WITH LOW EMISSIVITY COATING AND ARGON GAS  
HARDWARE: 40MM BONDED BARS AND 38MM GRILLES  
FRAME: 92MM FRAME WITH EXTERNALLY BEADED DESIGN  
ADDITIONAL FEATURES: STORM CILL BOARD GROOVE, HEAD DRIP GROOVE, CILL DRIP GROOVE  
MINIMUM U-VALUE REQUIREMENT: 1.4

**INSTALLATION & REMOVAL**

EXISTING WINDOWS, INCLUDING FRAMES AND ASSOCIATED MATERIALS, WILL BE CAREFULLY REMOVED AND DISPOSED OF FOLLOWING LOCAL ENVIRONMENTAL REGULATIONS. RECYCLING AND REUSING MATERIALS ARE PRIORITIES.  
NEW WINDOWS WILL BE INSTALLED BY SKILLED TECHNICIANS, ENSURING PRECISE MEASUREMENTS AND NECESSARY STRUCTURAL ADJUSTMENTS.

**WINDOW FINISH**

RAL9005 JET BLACK FINISH TO THE FJL SOFTWOOD FRAMES TO ACHIEVE A MODERN AND SOPHISTICATED EXTERIOR LOOK.  
UTILIZE SOFTWOOD GLAZING BEADS AND BOTTOM BEADS FOR A REFINED AND COHESIVE WINDOW DESIGN.

Revisions  
B - Revisions to material change from UPVC to Timber windows.

All dimensions to be checked on site by the Contractor and any discrepancies reported to the Surveyor

Edwin Thompson is the trading name of Edwin Thompson LLP, a Limited Liability Partnership registered in England & Wales No OC305442. Registered Office: 28 St. Johns Street Keswick, Cumbria CA12 5AF



**KESWICK**  
28 St. Johns Street  
Keswick  
Cumbria  
CA12 5AF  
T: 017687 72988  
F: 017687 74690  
E-mail: keswick@edwin-thompson.co.uk  
W: edwin-thompson.co.uk

also at: CARLISLE, BERWICK, GALASHIELS & WINDERMERE

Client  
**MR. & MRS. PICKERING**  
Project  
**CROOKHAM CHURCH, CROOKHAM**

Project Number  
BP5353  
Drawing Number  
6  
Rev  
B

Drawing Title  
**DOOR AND WINDOW SCHEDULE**

Drawing Status  
PLANNING CONDITION  
Issue Date  
13/10/23  
Drawn By  
DS  
Checked By  
SK  
Scale  
1:50 @ A1