

ACCESS, LOADING AND UNLOADING

TEMP ELECTRIC SUPPLY 143.6m

PLANT STORAGE LIFTING EQUIPMENT

SIZE TOILET AND WATER SUPPLY

CONFOUND FOR MATERIALS



WORKFORCE PARKING

T1

H2

T3

H5

T4

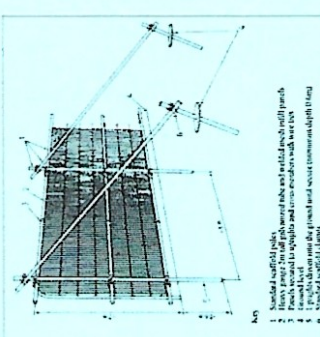
THIS PLAN IS TO BE PRINTED IN COLOUR AND READ IN CONJUNCTION WITH THE JCA ARBORETOLOGICAL REPORT (JCA REF: 21416CHC)

**Appendix 5: Tree Protection Plan**  
 ADDRESS: 14 Wigton Lane, Leeds, West Yorkshire LS10 5BA.  
 JCA REF: 21416CHC  
 SCALE: 1:200 PAPER SIZE: A2  
 DRAWN BY: CC APPROVED BY: EN

	TREE TO BE RETAINED
	TREE TO BE REMOVED
	STEM OF TREE TO BE REMOVED
	STEM OF TREE TO BE REMOVED
	ROOT PROTECTION AREA (RPA)
	PROTECTIVE FENCE LINE (CFZ)



Default specification for a protective barrier



**TREE PROTECTION MEASURES**  
 THE PROTECTIVE FENCING SHALL BE INSTALLED TO PROTECT THE TREE FROM DAMAGE BY ALL VEHICLES UNLESS OTHERWISE SPECIFIED IN THE ARBORETOLOGICAL REPORT.  
 IF ANY DAMAGE TO THE TREE IS OBSERVED BY THE CLIENT OR THE ARBORETOLOGICAL CONSULTANT, THE ARBORETOLOGICAL CONSULTANT SHALL BE ADVISED IMMEDIATELY BY THE CLIENT.  
 THE ARBORETOLOGICAL CONSULTANT SHALL BE RESPONSIBLE FOR THE PROTECTION OF THE TREE FROM DAMAGE BY ALL VEHICLES UNLESS OTHERWISE SPECIFIED IN THE ARBORETOLOGICAL REPORT.  
 IT IS IMPORTANT THAT THE PROTECTIVE FENCING IS CHECKED BY THE ARBORETOLOGICAL CONSULTANT FROM TIME TO TIME TO ENSURE IT IS MAINTAINED AND IS EFFECTIVE.  
 PROTECTIVE FENCING SHALL BE INSTALLED TO PROTECT THE TREE FROM DAMAGE BY ALL VEHICLES UNLESS OTHERWISE SPECIFIED IN THE ARBORETOLOGICAL REPORT.  
 DAMAGE TO THE TREE SHALL BE THE RESPONSIBILITY OF THE CLIENT UNLESS OTHERWISE SPECIFIED IN THE ARBORETOLOGICAL REPORT.