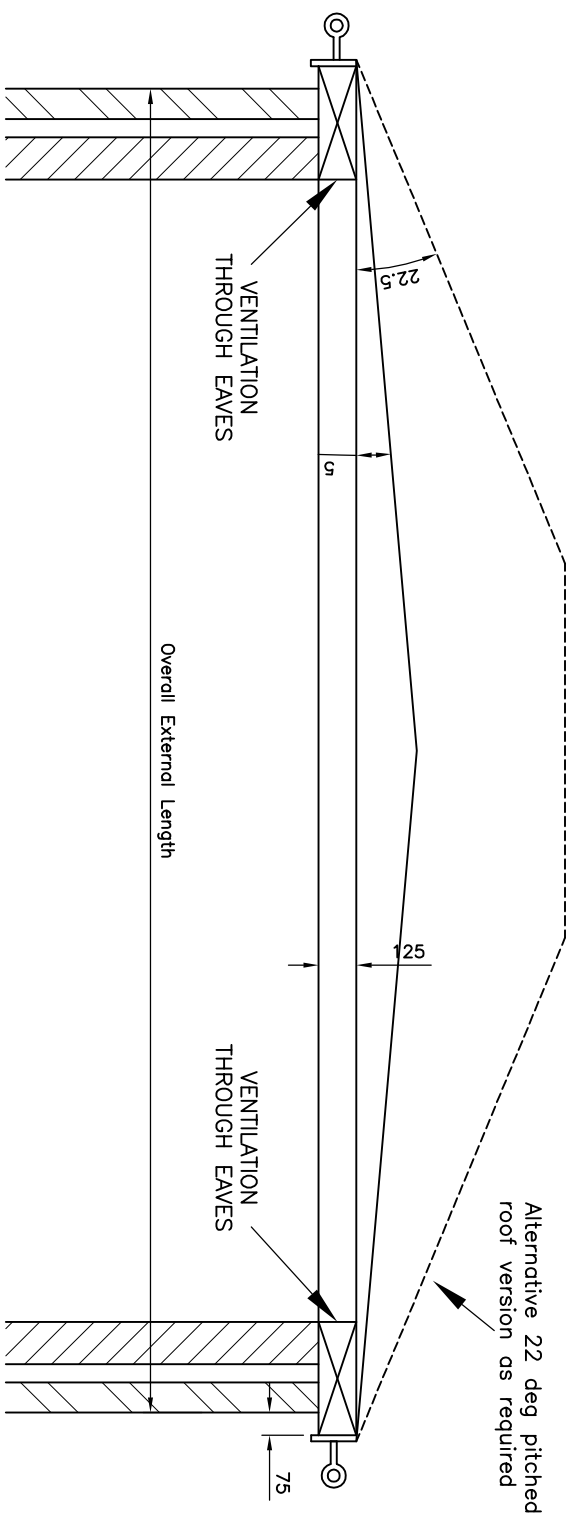


PLAN



SECTION

Note:—

Roofs shall be manufactured in one composite piece and shall be profiled with a 2 way 5 degree fall to each side of the unit to prevent drainage of water over the doors. When planning requirements have detailed that alternative tile effect roofs are required these shall be profiled with a 22.5 degree 4 way pitch and to incorporate an edge detail to prevent drainage of water over the doors.

Materials to be used shall not be susceptible to rusting, rotting, shrinking, warping, etc. and shall provide a U Value of 1.6W/m²/°C.

Roofs are to be designed to support distributed loading of 1.8kN/m², they must be fitted with an explosion relief device which must have automatic return. The explosion relief device should be designed with a "lock off" device to prevent roof lift during transportation. The design of the explosion device must be such that excessive winds do not affect the roof which must remain in position at all times. Fixing to be BS6399 Part 3 to be designed and supplied by roof manufacture for fixing by others.

Roofs shall incorporate integral lifting features to facilitate safe craning of the complete unit into position and possible future removal of the complete unit/roof for maintenance and/or replacement of the electrical plant contained therein. The Supplier shall supply details of the lifting arrangements before delivery.

Alternative construction methods and design will be considered provided the Manufacturer can provide sufficient evidence that the alternative will achieve equal strength and enhance the requirements.

To provide a minimum of 0.85 m² of ventilation, mesh to be used around ventilation area to stop vermin.

To provide 1hr fire resistance.

Minimum life expectancy of 20 years.

Enclosure finished to match local materials and to suit environment.

If in steel, to be galvanised to BS 729 and finished to match surrounding.

Supplier to provide drawings for approval.

		Lloyds Court, 78 Grey Street, Newcastle Upon Tyne, NE1 6AF	
		ROOF DETAILS (GRP/STEEL)	
Manufacturer Details		Document Details	
Sheet No. 1	Scale AS SHOWN	STANDERD DISTRIBUTION SUBSTATION DRAWINGS	
Prepared By TD	Grid Reference	Ref No. C969428	Historic Drawing No.
Revised	Checked By CD	Revision B	Notes
Date Issued 14.11.11			

minimum
soffit ventilatio

Alternative 22 deg pitched
roof version as required