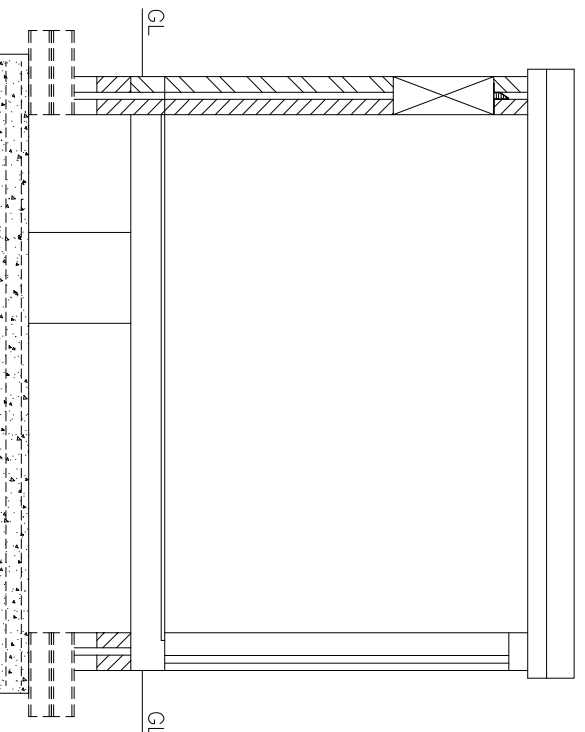


FRONT ELEVATION

REAR ELEVATION

SUBSTATION DOORS TO MEET SPECIFICATION WITH VENTILATION OPENINGS, IN 2590x2400mm HIGH BRICKWORK OPENING

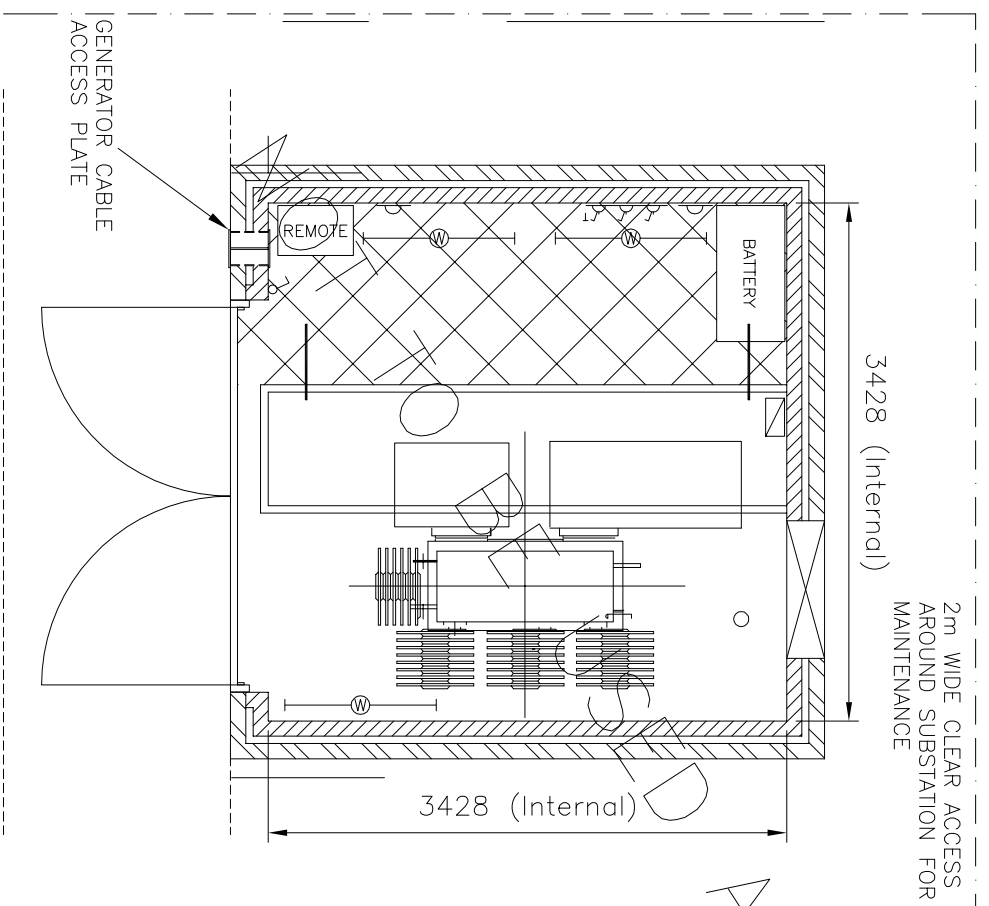
SIDE ELEVATION



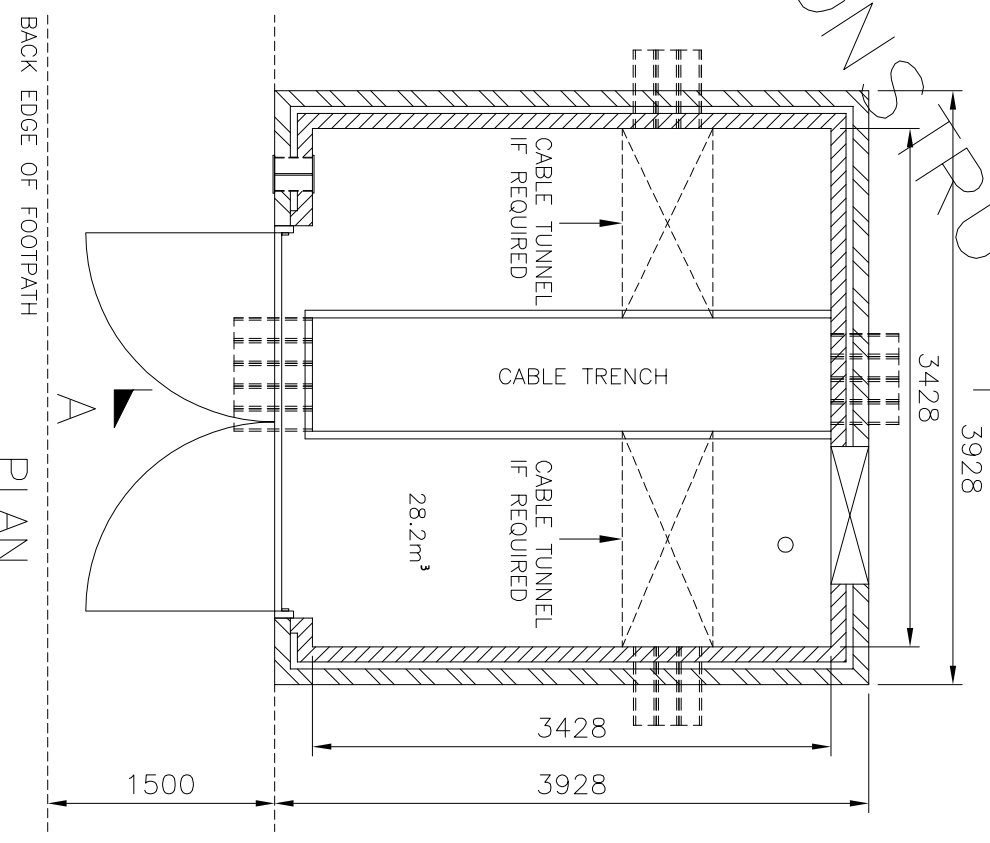
SECTION A-A

NOTES

Substation doors to be set back a minimum of 1500mm from back edge of footpath. Any proposed reduction in this clearance to be approved by Northern Powergrid following submission of site specific risk assessment and operational method statement.



ELECTRICAL LAYOUT



PLAN



Lloyds Court, 78 Grey Street, Newcastle Upon Tyne, NE1 6AF

315 - 1000kVA SLIDE IN UDE IN MASONRY ENCLOSURE

Manufacturer Details		Document Details	
Sheet No. 1	Scale AS SHOWN	Prepared By TM	Ref No. C993899
Revised	Grid Reference	Checked By JJ	Historic Drawing No.
Date Issued 17.05.16		Revision B	Notes
GENERAL ARRANGEMENT / PLAN & ELEVATIONS			