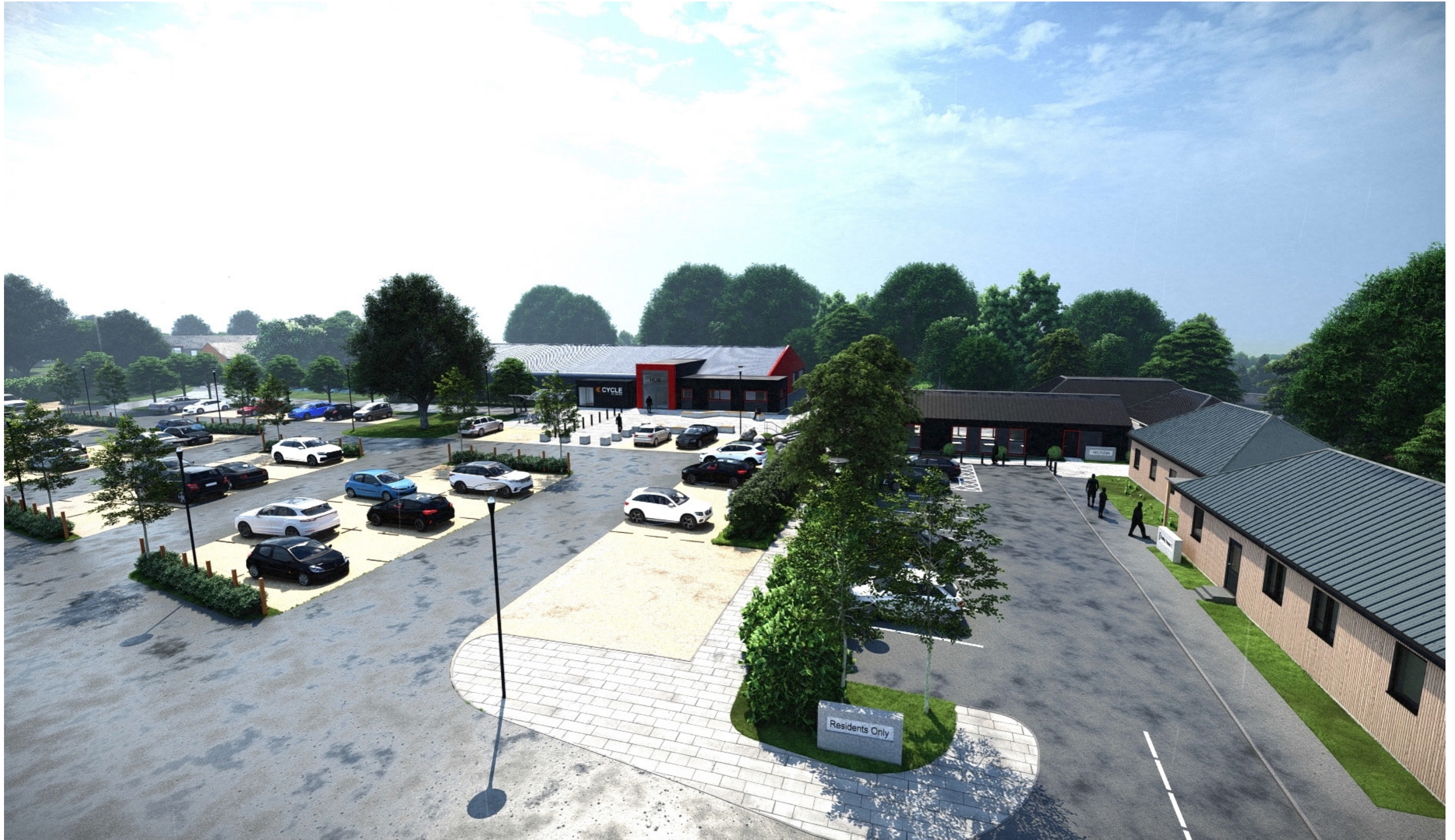
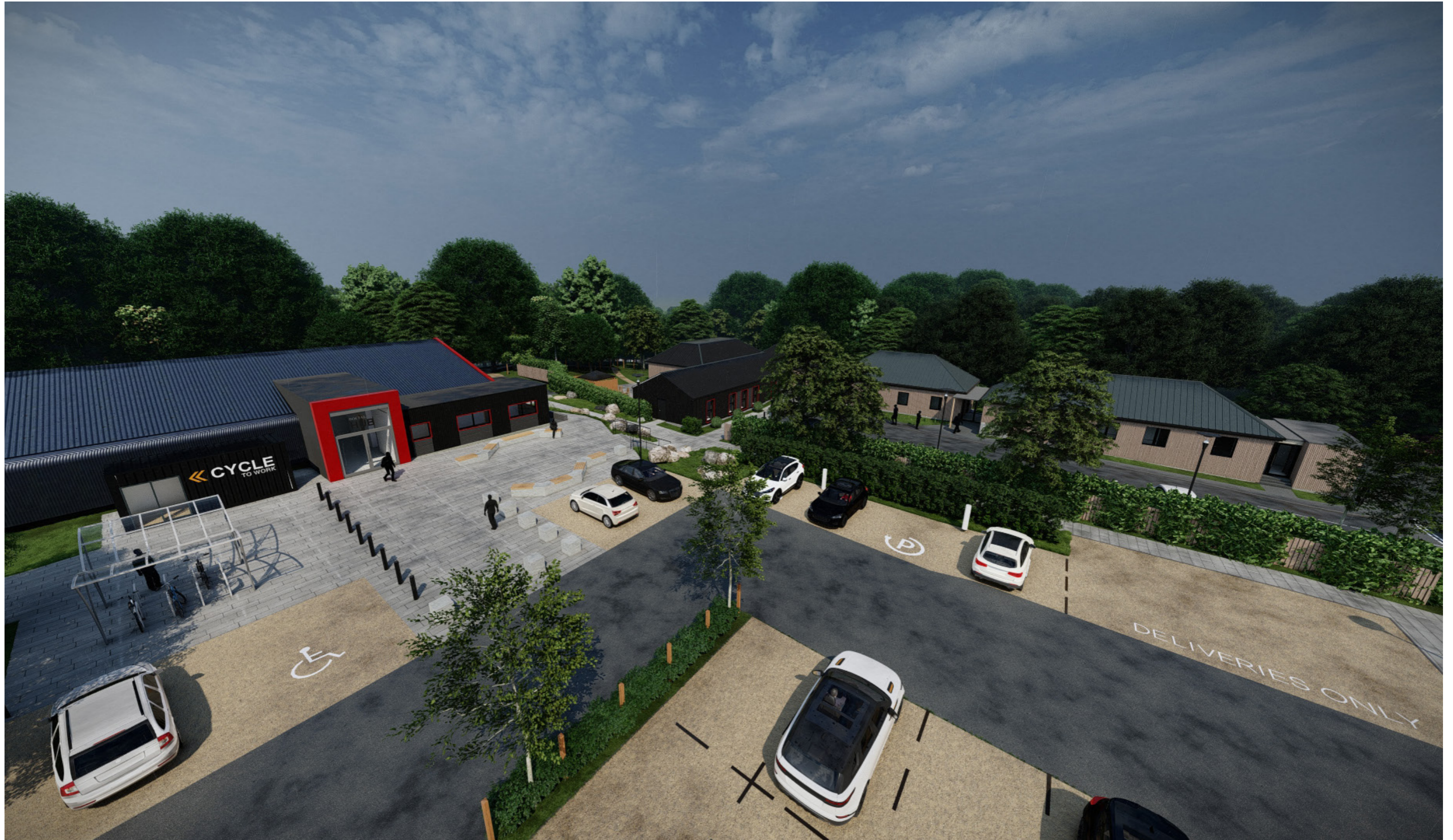


# River Garden Auchincruive - a special place for all to flourish



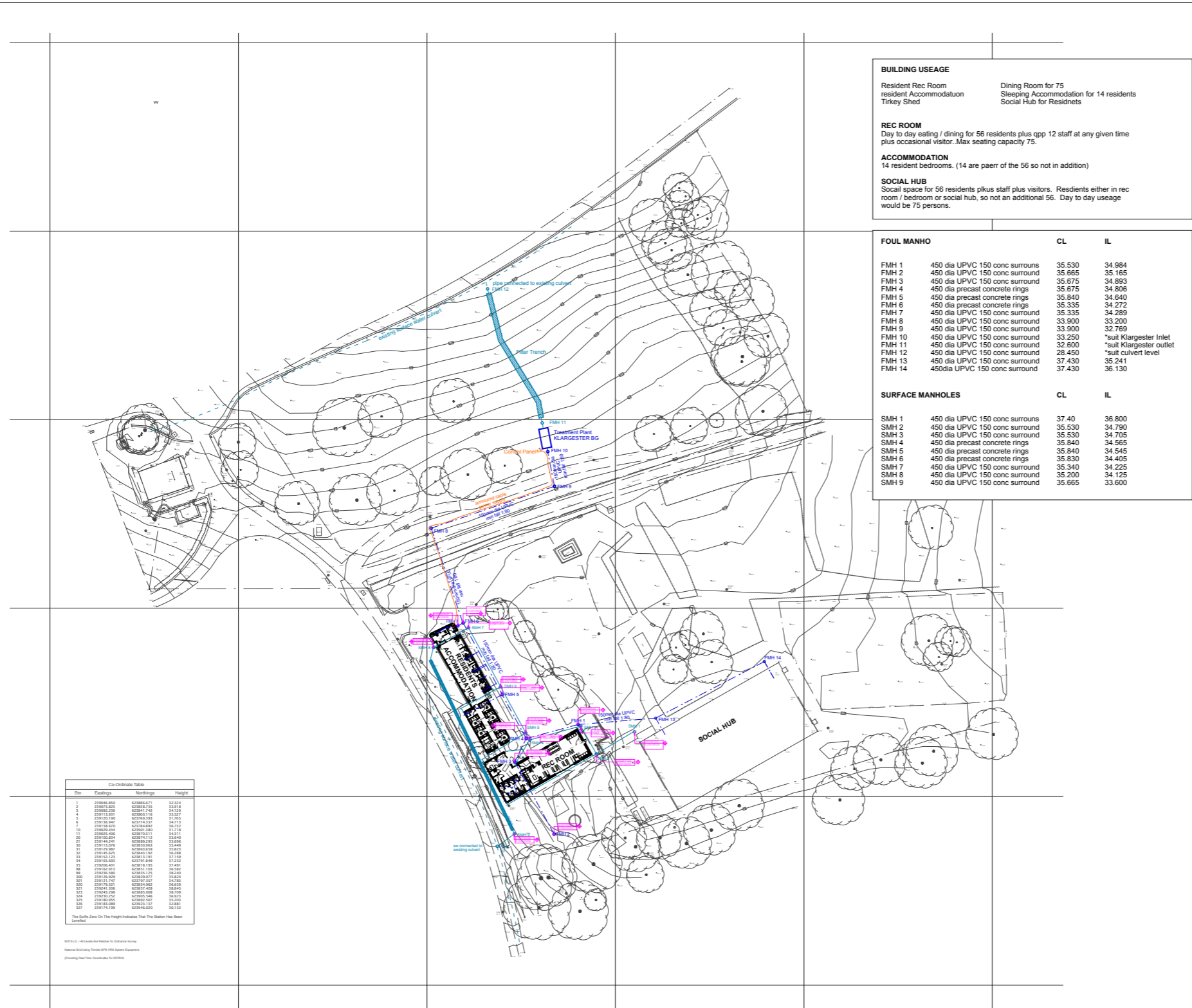


# River Garden Auchincruive - a special place for all to flourish





# River Garden Auchincruive - a special place for all to flourish



**BUILDING USAGE**  
 Resident Rec Room Dining Room for 75  
 resident Accommodatoun Sleeping Accommodation for 14 residents  
 Turkey Shed Social Hub for Residents

**REC ROOM**  
 Day to day eating / dining for 56 residents plus app 12 staff at any given time plus occasional visitor. Max seating capacity 75.

**ACCOMMODATION**  
 14 resident bedrooms. (14 are paerr of the 56 so not in addition)

**SOCIAL HUB**  
 Social space for 56 residents plus staff plus visitors. Residents either in rec room / bedroom or social hub, so not an additional 56. Day to day useage would be 75 persons.

FOUL MANHO		CL	IL
FMH 1	450 dia UPVC 150 conc surrounds	35.530	34.984
FMH 2	450 dia UPVC 150 conc surround	35.665	35.165
FMH 3	450 dia UPVC 150 conc surround	35.675	34.893
FMH 4	450 dia precast concrete rings	35.675	34.806
FMH 5	450 dia precast concrete rings	35.840	34.640
FMH 6	450 dia precast concrete rings	35.335	34.272
FMH 7	450 dia UPVC 150 conc surround	35.335	34.289
FMH 8	450 dia UPVC 150 conc surround	33.900	33.200
FMH 9	450 dia UPVC 150 conc surround	33.900	32.759
FMH 10	450 dia UPVC 150 conc surround	33.250	*suit Klargester Inlet
FMH 11	450 dia UPVC 150 conc surround	32.600	*suit Klargester outlet
FMH 12	450 dia UPVC 150 conc surround	28.450	*suit culvert level
FMH 13	450 dia UPVC 150 conc surround	37.430	35.241
FMH 14	450dia UPVC 150 conc surround	37.430	36.130

SURFACE MANHOLES		CL	IL
SMH 1	450 dia UPVC 150 conc surrounds	37.40	36.800
SMH 2	450 dia UPVC 150 conc surround	35.530	34.790
SMH 3	450 dia UPVC 150 conc surround	35.530	34.705
SMH 4	450 dia precast concrete rings	35.840	34.565
SMH 5	450 dia precast concrete rings	35.840	34.545
SMH 6	450 dia precast concrete rings	35.830	34.405
SMH 7	450 dia UPVC 150 conc surround	35.340	34.225
SMH 8	450 dia UPVC 150 conc surround	35.200	34.125
SMH 9	450 dia UPVC 150 conc surround	35.665	33.600

Co-Ordinate Table

Stn	Eastings	Northings	Height
1	230960.850	623886.671	32.074
2	230960.870	623886.710	32.074
3	230960.890	623886.749	32.074
4	230960.910	623886.788	32.074
5	230960.930	623886.827	32.074
6	230960.950	623886.866	32.074
7	230960.970	623886.905	32.074
8	230960.990	623886.944	32.074
9	230961.010	623886.983	32.074
10	230961.030	623887.022	32.074
11	230961.050	623887.061	32.074
12	230961.070	623887.100	32.074
13	230961.090	623887.139	32.074
14	230961.110	623887.178	32.074
15	230961.130	623887.217	32.074
16	230961.150	623887.256	32.074
17	230961.170	623887.295	32.074
18	230961.190	623887.334	32.074
19	230961.210	623887.373	32.074
20	230961.230	623887.412	32.074
21	230961.250	623887.451	32.074
22	230961.270	623887.490	32.074
23	230961.290	623887.529	32.074
24	230961.310	623887.568	32.074
25	230961.330	623887.607	32.074
26	230961.350	623887.646	32.074
27	230961.370	623887.685	32.074
28	230961.390	623887.724	32.074
29	230961.410	623887.763	32.074
30	230961.430	623887.802	32.074
31	230961.450	623887.841	32.074
32	230961.470	623887.880	32.074
33	230961.490	623887.919	32.074
34	230961.510	623887.958	32.074
35	230961.530	623887.997	32.074
36	230961.550	623888.036	32.074
37	230961.570	623888.075	32.074
38	230961.590	623888.114	32.074
39	230961.610	623888.153	32.074
40	230961.630	623888.192	32.074
41	230961.650	623888.231	32.074
42	230961.670	623888.270	32.074
43	230961.690	623888.309	32.074
44	230961.710	623888.348	32.074
45	230961.730	623888.387	32.074
46	230961.750	623888.426	32.074
47	230961.770	623888.465	32.074
48	230961.790	623888.504	32.074
49	230961.810	623888.543	32.074
50	230961.830	623888.582	32.074
51	230961.850	623888.621	32.074
52	230961.870	623888.660	32.074
53	230961.890	623888.699	32.074
54	230961.910	623888.738	32.074
55	230961.930	623888.777	32.074
56	230961.950	623888.816	32.074
57	230961.970	623888.855	32.074
58	230961.990	623888.894	32.074
59	230962.010	623888.933	32.074
60	230962.030	623888.972	32.074
61	230962.050	623889.011	32.074
62	230962.070	623889.050	32.074
63	230962.090	623889.089	32.074
64	230962.110	623889.128	32.074
65	230962.130	623889.167	32.074
66	230962.150	623889.206	32.074
67	230962.170	623889.245	32.074
68	230962.190	623889.284	32.074
69	230962.210	623889.323	32.074
70	230962.230	623889.362	32.074
71	230962.250	623889.401	32.074
72	230962.270	623889.440	32.074
73	230962.290	623889.479	32.074
74	230962.310	623889.518	32.074
75	230962.330	623889.557	32.074
76	230962.350	623889.596	32.074
77	230962.370	623889.635	32.074
78	230962.390	623889.674	32.074
79	230962.410	623889.713	32.074
80	230962.430	623889.752	32.074
81	230962.450	623889.791	32.074
82	230962.470	623889.830	32.074
83	230962.490	623889.869	32.074
84	230962.510	623889.908	32.074
85	230962.530	623889.947	32.074
86	230962.550	623889.986	32.074
87	230962.570	623889.025	32.074
88	230962.590	623889.064	32.074
89	230962.610	623889.103	32.074
90	230962.630	623889.142	32.074
91	230962.650	623889.181	32.074
92	230962.670	623889.220	32.074
93	230962.690	623889.259	32.074
94	230962.710	623889.298	32.074
95	230962.730	623889.337	32.074
96	230962.750	623889.376	32.074
97	230962.770	623889.415	32.074
98	230962.790	623889.454	32.074
99	230962.810	623889.493	32.074
100	230962.830	623889.532	32.074

**NOTE**  
 This drawing is the copyright of G1 Architects and the contents shall not be reproduced or used for any other purpose without their written consent. It shall be used only for the purposes for which it was prepared and shall not be used for any other purpose without the written consent of G1 Architects. All dimensions shall be given in millimetres unless otherwise stated. All dimensions shall be rounded up to the nearest millimetre. Drawing to be used in conjunction with other drawings and specifications.  
 If in doubt ASB



**Drawing to be read in conjunction with Site and Building Plans**  
**Refer Structural Engineers drawings for Drainage details**

No	Description	Date
P4	SMH nos added and additional setting out added	02.03.2023
P3	MH setting out added	01.03.2023
P2	Foul pipe size conformed 150mm dia	27.02.2023
P1	Layout amended, manholes renumbered	06.11.2022

**G1 Architects**  
 88 High Street  
 211 Dumbarton Road  
 Glasgow G11 6AA  
 T: 0141 334 4881  
 E: info@g1architects.com  
 W: www.g1architects.com

**Drawing Status**  
**CONSTRUCTION**

<b>Project</b> Extension to Residents Accommodation + Rec Room IFDAS, River Garden Auchincruive Ayr K&A S&E	<b>Drawing Title</b> Nellies Gate Site Plan PROPOSED Drainage
<b>Scale</b> 1:500	<b>Size</b> A1
<b>Drawn</b> RSM	<b>Checked</b> XXX
<b>Date</b> 04.11.2022	
<b>Drawing No</b> 577-G1-B-11_XX-DR-A-SP04	<b>Revision</b> P4

## 4.0 Sustainability

The buildings will be designed to current regulations.

### Carbon Dioxide Emissions

The proposals will meet carbon dioxide emissions targets set out by the building regulations.

Primary heat source will be by an ASHP.

### Sustainable Sources

Every effort will be made by the design team to specify local or sustainable construction materials.

### Water Conservation

Measures will be fully investigated at detail design stage to ensure that a sustainable approach is adopted in implementing water use, drainage and waste management measures across the development during construction and onwards into use.

### Drainage

A new sewage treatment plant will be installed as there is no mains drainage connection on site. This is consistent with previously approved systems on site.

Surface water will be capture in a new attenuation pond and discharged into adjacent watercourse.

### Recycling

The applicant is committed to reducing the impact on the environment by ensuring waste is managed in an efficient and sustainable manner.

### Managing the process

Affiliation with the standards of Considerate Constructors Scheme will be a requirement for all Contractors.

### Lighting

Measures will be introduced to minimise light pollution and increase energy efficiency. External lighting to be low level bollard and all fittings will be LED.

### Design for Life

The building has been designed to allow for future internal reorganisation, and re-use, if required.

### Flood Risk

The site is out with any flood risk zone.



# River Garden Auchincruive - a special place for all to flourish

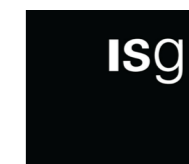
## River Garden Partners and Friends

RGA is very much part of the local community, with the entire site being open for locals and visitors to enjoy the gardens and the many beautiful walks through the gardens and also alongside the River Ayr.

Strong links have been built with the recovery community, local horticultural organisations, funding bodies and commercial enterprises and we are always looking to work with others and build our network.

We are enormously grateful to all of our friends and supporters without whom we could not have achieved the significant progress to date and who also share our vision to create a wonderful and unique place to recover, grow and flourish.

If you have an area of work or idea for collaboration, please [contact us](#) and we'll get back to you.





**ROAD TO  
RECOVERY**