

**60 SERIES DISTRIBUTION NOTES**

- ACCESSORIES SHALL AND ELECTRICAL FIXTURES INSTALLED BE AT MOUNTING HEIGHTS AND BS7071 POSITIONS TO COMPLY BS9300 WITH AND NON-COMMERCIAL BUILDINGS REGULATIONS CLAUSE 4.14.
- MAINS POWER CABLES MUST ALL HAVE A CHART'S LAMINATED TYPE WRITTEN RATING, FIRE/INTUDER CABLES ALARM ALARM EQUIPMENT MANUFACTURER TO CONSULT BE TO CONFORM.
- EQUIPMENT DISTRIBUTION MUST ALL HAVE A MINIMUM OF PROTECTION ON HORIZONTAL PEAK SURFACES IP2X VERTICAL SURFACES (IP22)
- DISTRIBUTION BOARDS SHALL ALL HAVE CIRCUIT CHART'S LAMINATED TYPE WRITTEN RATING, AND CIRCUIT REFERENCED DESCRIPTION.
- DISTRIBUTION BOARDS CABLES ALL INTERNAL TERMINATED IN CORRECT SEQUENCES

**61 SERIES DISTRIBUTION NOTES**

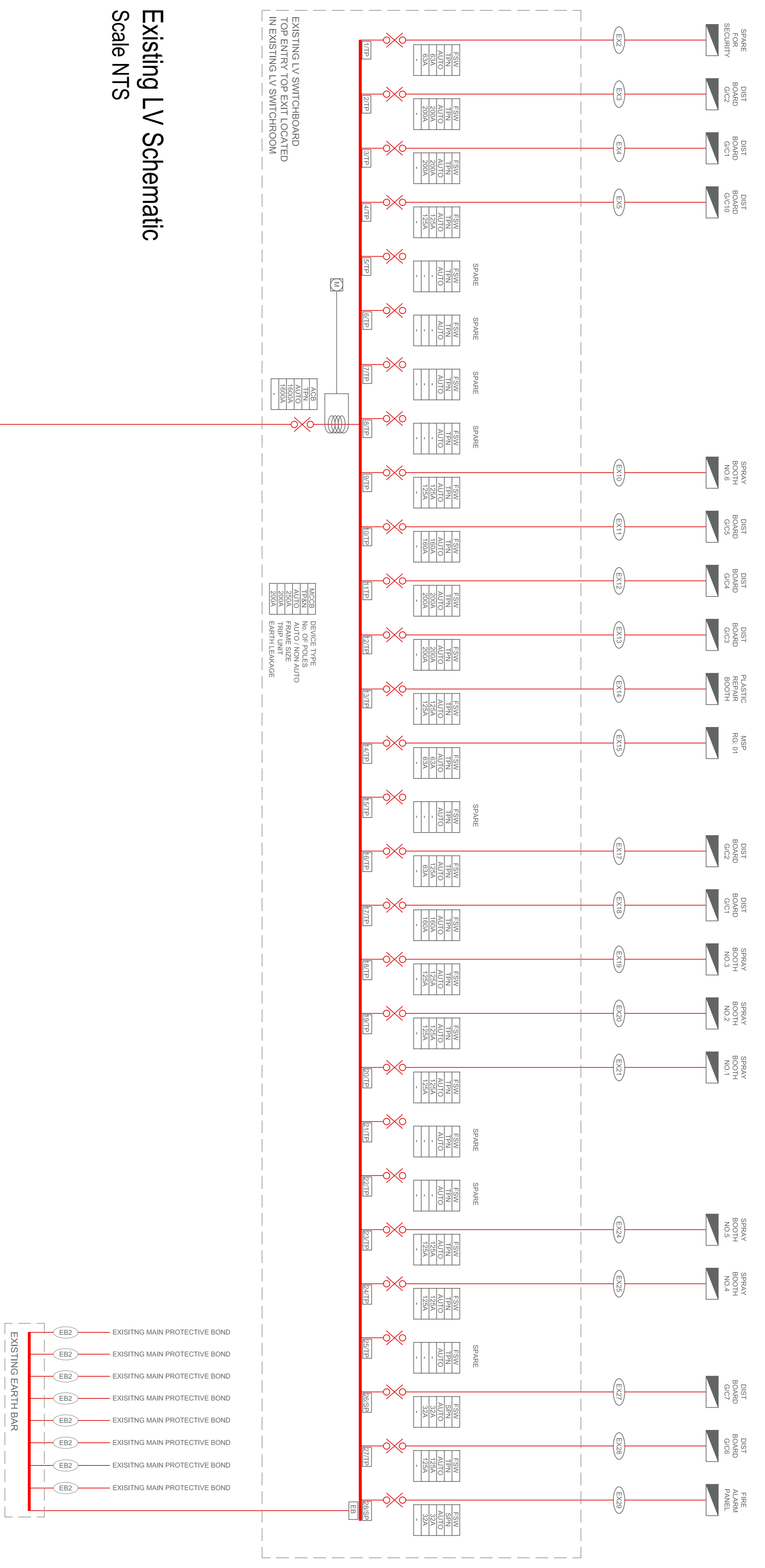
1. ACCESSORIES SHALL AND ELECTRICAL FIXTURES INSTALLED BE AT MOUNTING HEIGHTS AND BS7071 POSITIONS TO COMPLY BS9300 WITH AND NON-COMMERCIAL BUILDINGS REGULATIONS CLAUSE 4.14.

2. MAINS POWER CABLES MUST ALL HAVE A CHART'S LAMINATED TYPE WRITTEN RATING, FIRE/INTUDER CABLES ALARM ALARM EQUIPMENT MANUFACTURER TO CONSULT BE TO CONFORM.

3. EQUIPMENT DISTRIBUTION MUST ALL HAVE A MINIMUM OF PROTECTION ON HORIZONTAL PEAK SURFACES IP2X VERTICAL SURFACES (IP22)

4. DISTRIBUTION BOARDS SHALL ALL HAVE CIRCUIT CHART'S LAMINATED TYPE WRITTEN RATING, AND CIRCUIT REFERENCED DESCRIPTION.

5. DISTRIBUTION BOARDS CABLES ALL INTERNAL TERMINATED IN CORRECT SEQUENCES



## Existing LV Schematic

Scale NTS



**ISSUE: EXISTING.**

**BOXX**  
DESIGN • CONSULT • CONSTRUCT

Design: Engineering, Surveying, Consultancy

15, BATH STREET, GLASGOW, G2 3JN, SCOTLAND  
TEL: +44 (0)117 213193  
WWW.BOXX.CO.UK

15, BATH STREET, GLASGOW, G2 3JN, SCOTLAND  
TEL: +44 (0)117 213193  
WWW.BOXX.CO.UK

**DRAWING STATUS**  
**EXISTING**

PROJECT TITLE: 7890LG DLG GLASGOW CRRE  
DRAWING TITLE: EXISTING LV SCHEMATIC

SCALE(S)	DRAWN	CS
PROJECT No.	CHECKED	DLG
7890LG	DATE	16.03.23
DRAWING No.		
7890LG_100_002		
REV.		#