

INTERNAL PLAN OF BACH HOUSE F2A1

NOTES:- ALL WINDOWS DOUBLE GLAZED UPVC 2.1M X 1.35M WIDE.

ALL WALLS INSULATED WITH 120MM CEOTEX, PASTER BOARD & SKINNED (ALUMINUM FOIL)

FLOOR HAS 200MM CONCRETE OVER 50MM 12MM RENDER BOARD, CHIP BOARD & CARPET

CEILING HAS 300MM CONCRETE OVER 12MM SKINNED PASTER BOARD

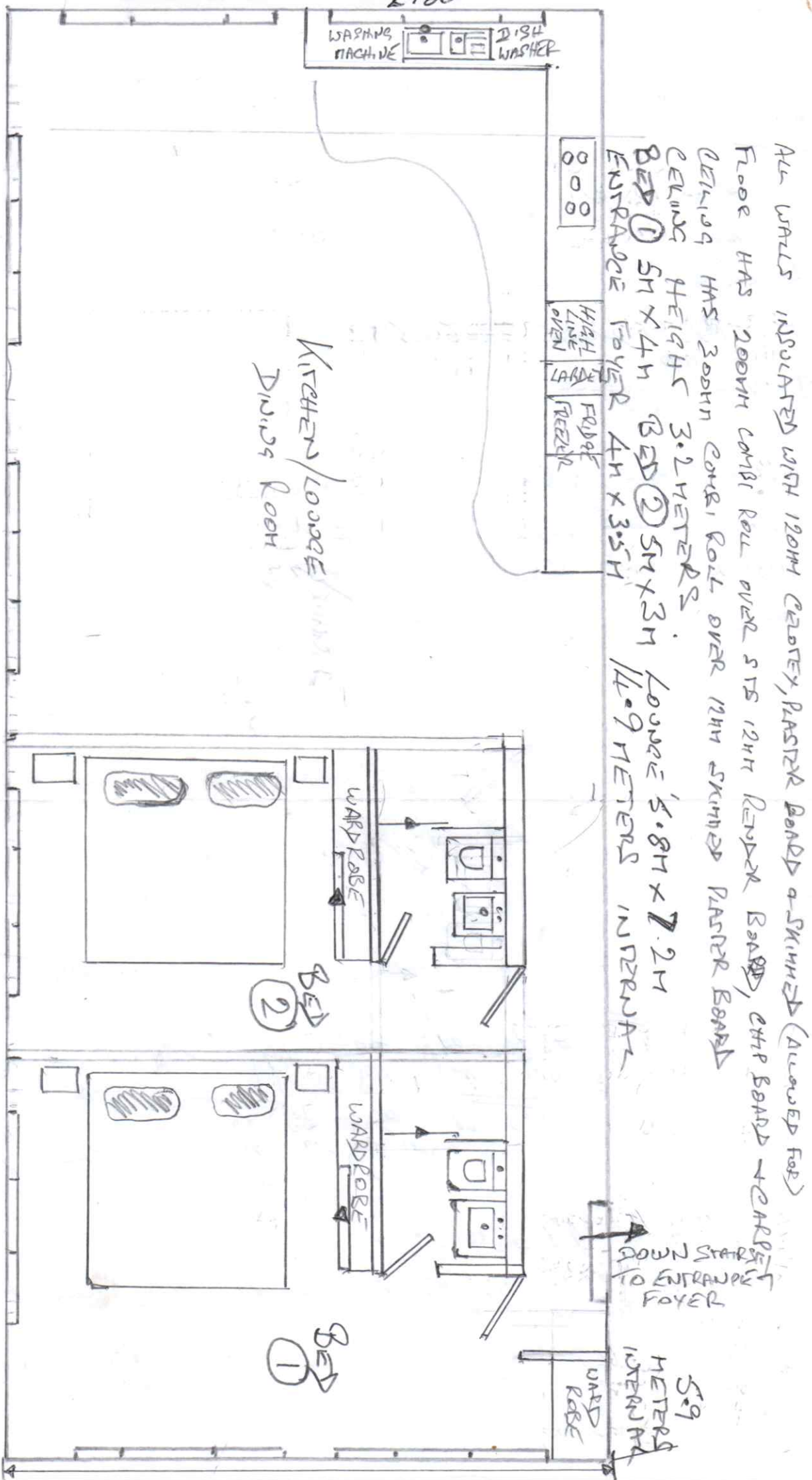
CEILING HEIGHTS 3.2 METERS

BED ① 5M X 4M BED ② 5M X 3M LOUNGE 5.8M X 7.2M

ENTRANCE FOYER 4M X 3.5M

HIGH LINE OVEN FREEZER

800



SCALE 1 METER = 20 CM