

Five Regulatory Standard Automatic Analyser Stations

Fulfills statutory duties and monitors LCC, AQMA and measures set out in the Air Quality Action Plan

Table 1 Brighton & Hove Automatic Monitors targeted for 2024

Site No	Automatic Analyser Station	Start	X	Y	First Cabinet Size	Preferred Cabinet Size	Pollutants
BH10	39, North Street	2012, upgrade Dec-2023	530995	104271	1.2 (w) 0.7 (d) 1,4 (h)	1.5m (w) 0.7 (d) 1.5 (h)	NOx, PM ₁₀ , PM _{2.5}
BH11	188, Lewes Road	December 2023	531846	105331	PR5 in the first instance	1.5m (w) 0.7 (d) 1.5 (h)	NOx, PM ₁₀ , PM _{2.5}
BH12	Undercroft 43, Hollingdean Road	December 2023	532040	105943	PR5 in the first instance	1.7m (w) 0.65 (d) 1.5 (h)	NOx, SO ₂ , CO ₂
BH14	Belgrave frontage, Wellington Road	December 2023	526233	104879	1.7 (w) 0.8 (d) 2 (h)	Walk in?	NOx, PM ₁₀ , PM _{2.5} , SO ₂ , CO ₂
BH15	8, London Road	Plan A: December 2023	531364	105046	PR5 in the first instance	1.5m (w) 0.7 (d) 1.5 (h)	NOx, PM ₁₀ , PM _{2.5}

- Sites BH11 and BH15 require certificate of lawfulness application to planning for Permitted Development (PD) on the footway. This requires annotated plans and elevations of the enclosure sizes. Concrete base at each of these sites (included in itemised costs).
- BH12 and BH14 are conditions on planning developments. Student accommodation, south side of Hollingdean Road hardstanding is in-situ and installation ready. Belgrave Centre north side of Wellington Road, base or slabs required on the verge.

BH10 @ 39, North Street



- Council owned station operating since 2012. Comprehensive upgrade scheduled for 2024, replacement of old NO_x and PM_{2.5} analysers, addition of PM₁₀
- AQMA1, ULEZ and key performance KPI area for air quality
- Electric connection ready
- Properties behind owned by BHCC. AQ officer in discussion with Estates so they can consult with landlord and tenant regarding a wider cabinet (enclosure)
- Wider extended concrete base to go on the footway, set back from footfall

Front and side view of PR5 enclosure cabinet to accommodate air quality monitoring equipment

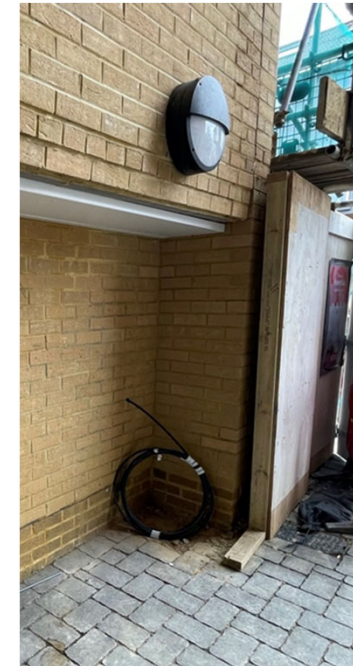


BH11 target 188, Lewes Road BN2 3LA



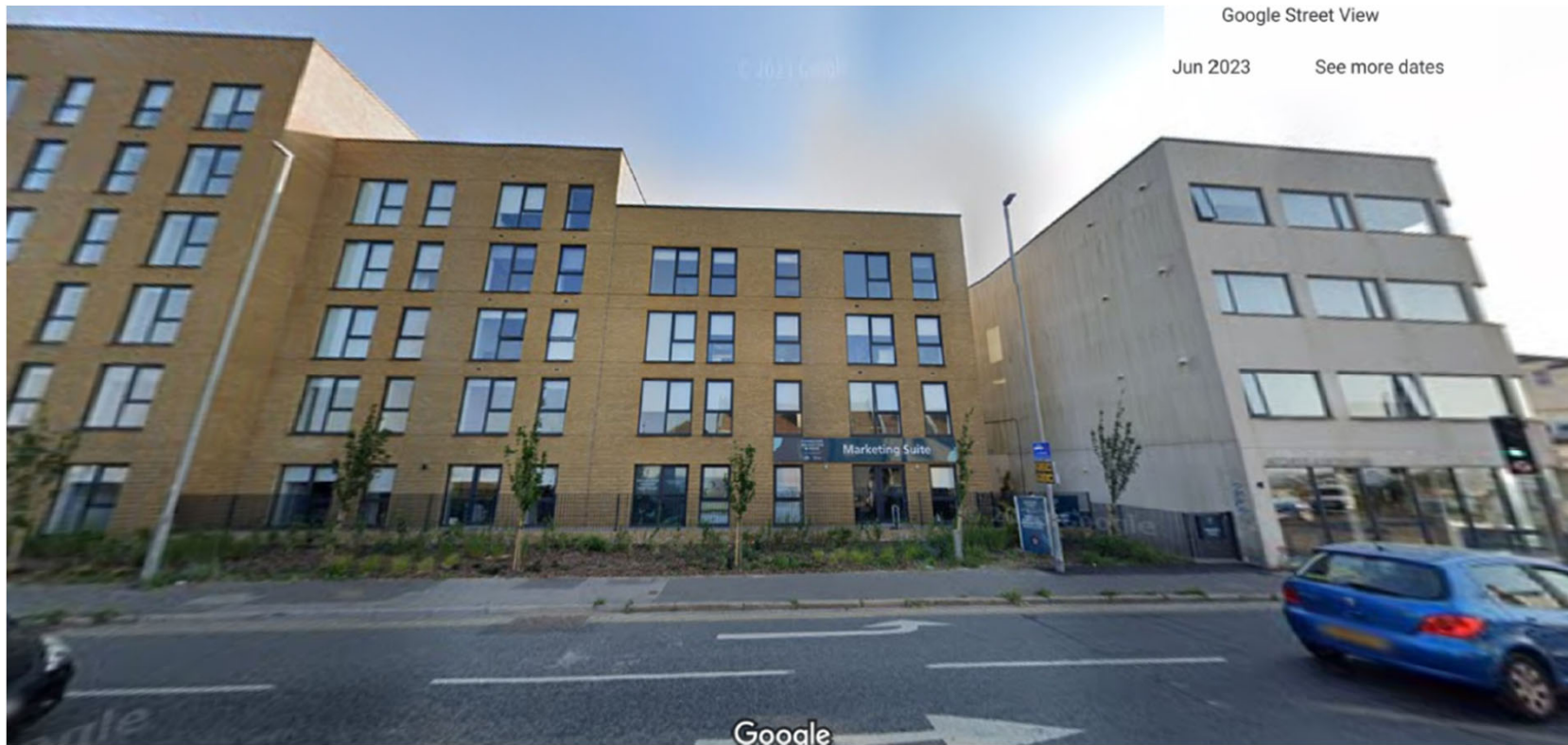
- Replaces site BH6 previously adjacent to Lewes Road 2012-2022. New equipment including NO_x, PM₁₀, PM_{2.5}.
- AQMA1 and Key Performance KPI area for air quality
- Certificate of lawfulness application to planning for Permitted Development (PD).
- Exiting cluster of items on the footway that is broader on the east side
- Lamp column and electric post
- New concrete base for the enclosure to sit on the footway.

BH12 43, Hollingdean Road, BN2 4AA



- Student accommodation development, south side of Hollingdean Road in AQMA1
- Diffusion tube attached to buildings (now demolished) showed exceedance of NO_2 every year 2002 to 2021
- New build recess with paved hardstanding and electric connection is installation ready for NO_x , SO_2 , CO_2

Monitor BH14 43, Wellington Road BN41 1BE



BH15 108 London Road