

1416'02

VALE END ANNEXE

BARFORD GU26 6JB

PROPOSED EXTENSION

SCALE: 1:150 @ A2.

June 2014

notes:

All external facing materials to match existing.

All drainage is to be executed in accordance with BS 5301 & plumbing BS 5570.

All water services are to be housed in accessible ducts. All hot water & heating pipes within floor void & roof space are to be foam lagged.

Electrical installation to comply with pt P of Bldg. Regs & test certificate to be issued by 'competent person' at completion.

Glass in & alongside doors to be laminated or toughened.

Light & power switches & points to be located in zone 400-1200mm above floor.

8000 sq mm trickle vents to habitable rooms & 4000 to bathroom & shower room.

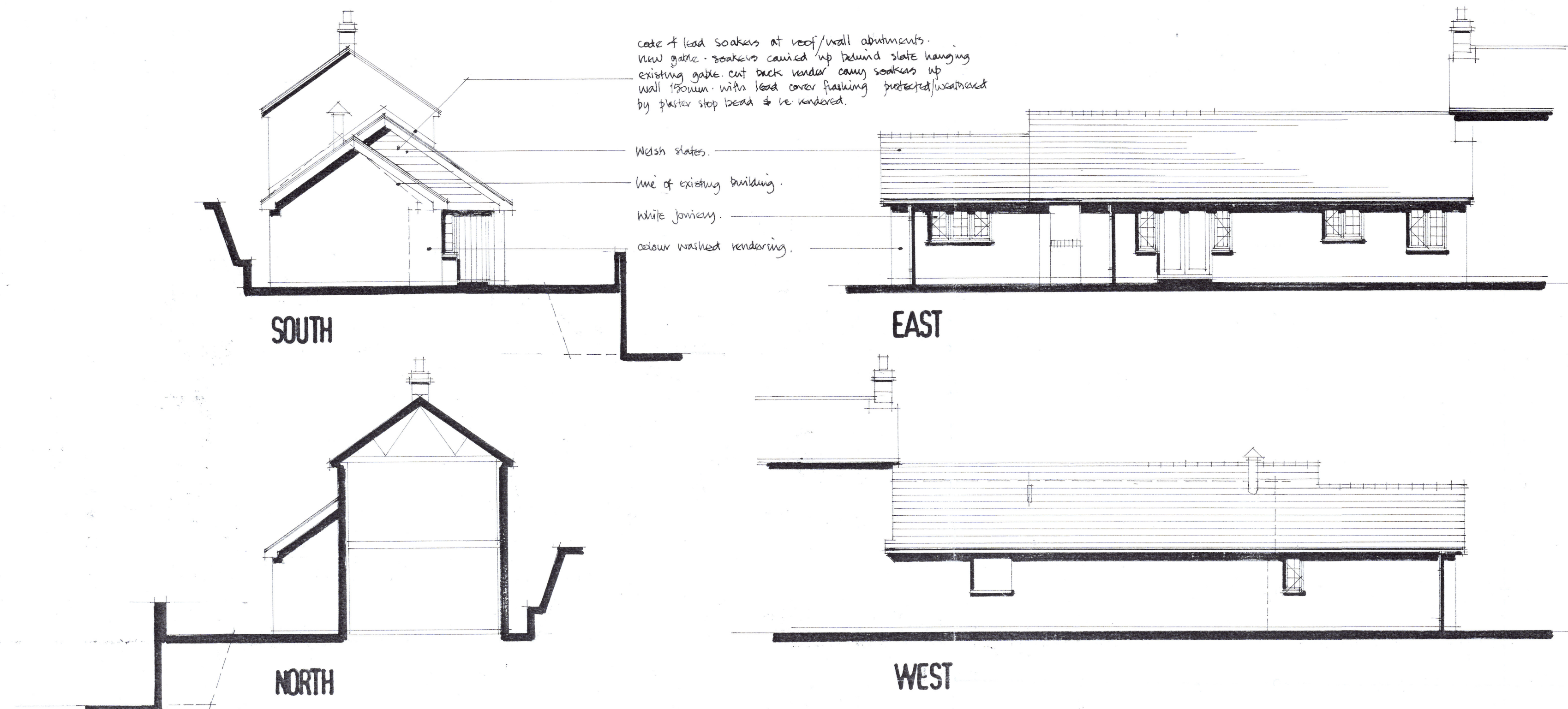
SD Smoke detectors to be self contained linked together & permanently wired to a separately fused circuit at the distribution board.

revisions:

EHDPLAN REC
27 OCT 2023

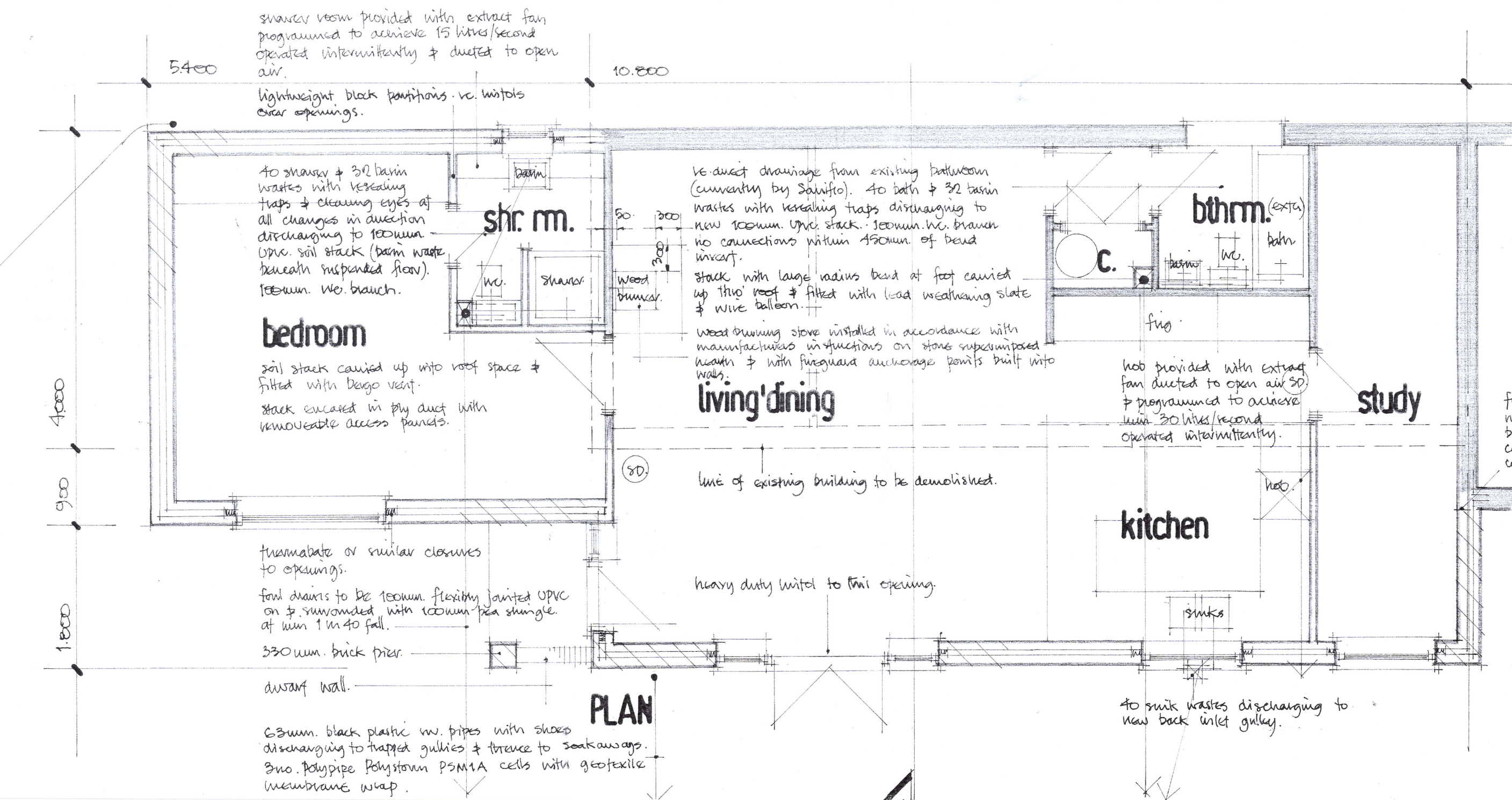
BARRY READ DipArch RIBA
01420 713020
bprisad@bt.com

1416'02



code of lead soakers at roof/wall abutments.
New gable soakers carried up behind slate hanging
existing gable cut back under eaves soakers up
wall 150mm with lead cover flashing protected/underlaid
by plaster stop bead & rendered.

Welsh slates.
line of existing building.
white joinery.
colour washed rendering.



shower room provided with extract fan programmed to achieve 15 litres/second operated intermittently & ducted to open air.

lightsight black panthons - w. white clear openings.

to messy & 30 litre wastes with vesding traps & cleaning eyes of all changes in direction discharging to 100mm UPVC soil stack (bain waste beneath suspended floor). 100mm WC branch.

bedroom
soil stack carried up into roof space & filled with bego vent.
stack encased in ply duct with removable access panels.

to duct drainage from existing bathroom (currently by Spinko). to bath & 30 litre wastes with vesding traps discharging to new 100mm UPVC stack. 100mm WC branch no connections within 150mm of bend insert.

stack with large radius bend at feet carried up thro' roof & filled with lead weathering slate & wire balloon.

wood burning stove installed in accordance with manufacturers instructions on stone supported hearth & with frequent discharge points built into walls.

hub provided with extract fan ducted to open air SD & programmed to achieve min 30 litres/second operated intermittently.

fixing profiles linking new with existing blockwork. cornice cavities are clean & continuous.

line of existing building to be demolished.

heavy duty wital to this opening.

to sink wastes discharging to new back inlet gully.

frustrate or similar closures to openings.
fan drains to be 100mm flexible jointed UPVC on & surrounded with 100mm pea shingle at min 1m40 fall.
550mm brick pier
dwarf wall.

PLAN

63mm black plastic w. pipes with shoes discharging to trapped gullies & thence to soakways.
3no. Polypipe Polystyrene PSMA cells with geotextile membrane wrap.