

PLANTING SCHEDULE

Tree Planting

Tree pit filled with approved site topsoil, with compost. 1.50m clear stem, full, evenly branching full crown, root ball, from approved selected supplier. Planted with aeration pipe. Support with single timber stake and ties. 1.0m diameter x 50mm depth composted bark mulch finish.

Ref	Species	Specification	Girth	Height	Total no.
T1	Tilia cordata	EHS	18-20cm	min 450cm	1
T2	Salix alba	EHS- pollarded	16-18cm	min 450cm	6
T3	Amelanchier arborea 'Robin Hill'; Prunus Ukon	Standard	10-12cm	300-350cm	14
T4	Acer campestre; Malus sylvestris; Prunus padus.	Standard	10-12cm	300-350cm	3

Ornamental planting = 265m2

Mix of perennial and grass plants in 2lt containers, planted at a density of 3-5 plants per metre in groups of 7-15.

Acanthus hungaricus, Agapanthus africanus, Agapanthus 'Purple Cloud', Agastache 'Blackadder', Allium sphaerocephalon, Anemone x hybrida 'Honorine Jobert', Astrantia major subsp. involucrata 'Shaggy', Artemisia 'Powis Castle', Echinops rito 'Veitch's blue', Echinacea purpurea 'Virgin', Echinacea purpurea 'White Swan', Eryngium alpinum 'Blue star', Euphorbia characias subsp. wulfenii, Euphorbia palustris, Calamagrostis x acutiflora 'Karl Foerster', Gaura lindheimeri, Geranium 'Orion', Geranium x johnsonii 'Johnson's Blue', Hylotelephium 'Matrona', Hylotelephium spectabile 'Stardust', Helichrysum italicum, Miscanthus sinensis 'Gracillimus', Nepeta racemosa 'Walker's Low', Panicum virgatum 'Rehbraun', Pennisetum 'Fairy Tails', Perovskia 'Blue Spire', Persicaria amplexicaulis 'Alba', Sanguisorba 'Tanna', Salvia nemorosa 'Caradonna', Salvia nemorosa 'Ostfriesland', Salvia x sylvestris 'Mainacht', Salvia verticillata 'Purple Rain, Sedum 'Matrona', Stachys byzantina 'Silver Carpet', Stipa tenuissima, Thalictrum 'Elin', Verbena bonariensis, Verbena hastata 'Blue Spires', Veronicastrum virginicum 'Fascination'

To include a mix of bulbs planted at the front of the border in groups of 25-50.

Crocus 'Jeanne d'Arc', Crocus 'Grand Maître', Galanthus nivalis, Iris 'Alida' (Reticulata), Narcissus 'Ice Follies', Narcissus 'Falmouth Bay', Narcissus 'Frosty Snow', Nerine bowdenii 'Ella K',

Native shrub planting = 158m2

Mix planted at a density of 3-5 plants per metre in groups of 5-9. Supported by a single cane with overlapping spiral photodegradeable recycled PVC gaurds.

Species	Specification	Height	% of mix
Cornus sanguinea	Bagged (bareroot)	40-50cm	5%
Corylus avellana			20%
Crataegus monogyna			20%
Euonymus europaeus			5%
Ilex aquifolium			8%
Malus sylvestris			5%
Prunus spinosa			20%
Rhamnus cathartica			5%
Sambucus nigra			2%
Sorbus aucuparia			5%
Viburnum opulus			5%

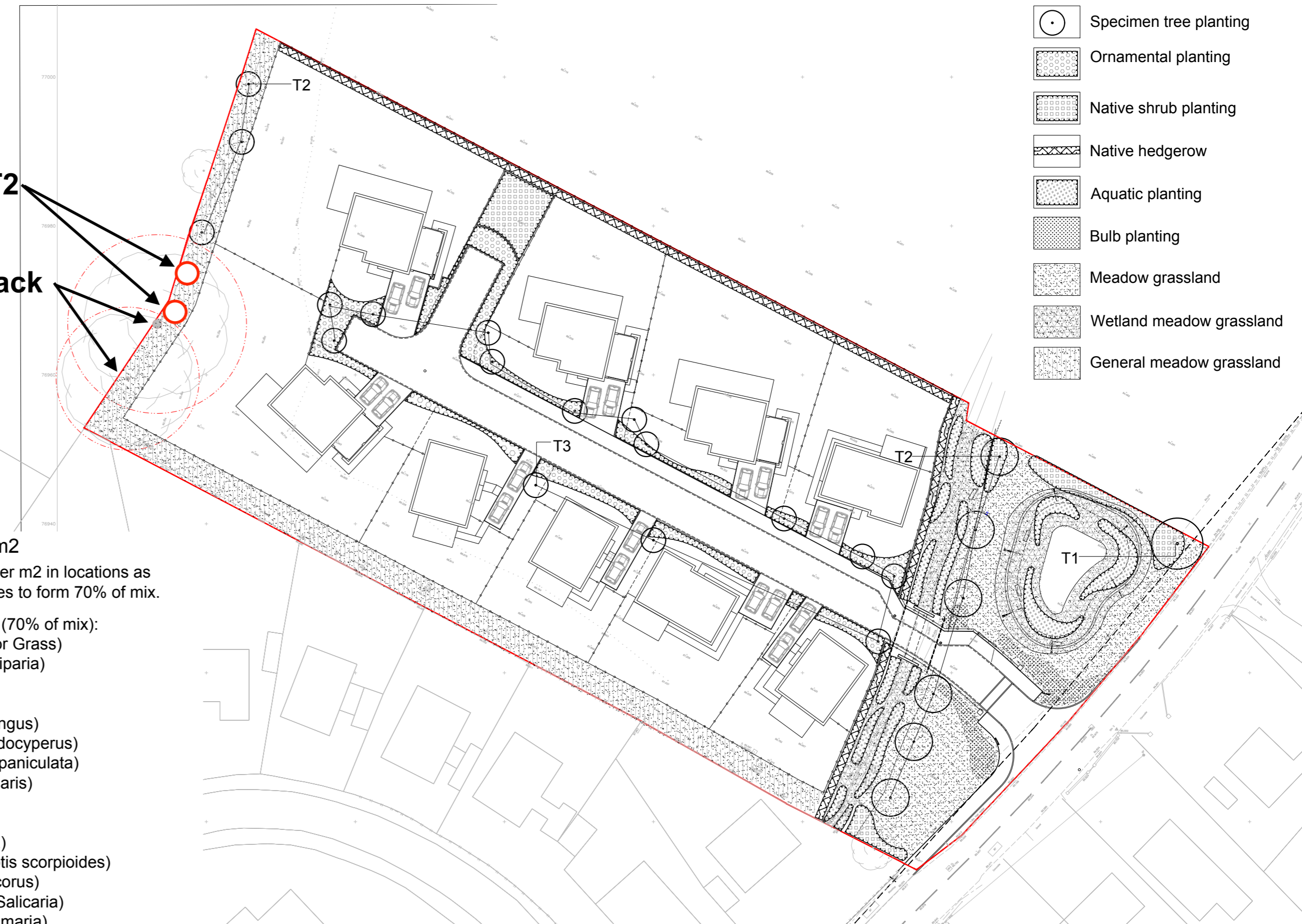
Hedge Planting = 153m

Native transplants to be planted in a staggered row at 6no. plants per linear metre. Planted in groups of 5-9 per species. All native transplants to be supported by a single cane with overlapping spiral photodegradeable recycled PVC gaurds.

Species	Specification	Height	% of mix
Acer campestre	BR, transplant	60-90cm	10%
Corylus avellana			20%
Crataegus monogyna			33%
Prunus padus			10%
Prunus spinosa			25%
Rosa canina			2%

2no Additional T2

Felled due Ash Die Back



LEGEND

- Site boundary
- Specimen tree planting
- Ornamental planting
- Native shrub planting
- Native hedgerow
- Aquatic planting
- Bulb planting
- Meadow grassland
- Wetland meadow grassland
- General meadow grassland

Aquatic planting = 183m2

Plant 7cm plugs at 8 plants per m2 in locations as identified. Sedges and grasses to form 70% of mix.

Grasses, sedges, and rush's (70% of mix):
 Molinia caerulea (Purple Moor Grass)
 Greater pond sedge (Carex riparia)
 Hard rush (Juncus inflexus)
 Soft rush (Juncus effusus)
 Sweet Galingale (Cyperus longus)
 Cyperus Sedge (Carex pseudocyperus)
 Great tussock sedge (Carex paniculata)
 Hair Grass (Eleocharis acicularis)

Perennials (30% of mix):
 Water Mint (Mentha aquatica)
 Water Forget-me-not (Myosotis scorpioides)
 Yellow Flag Iris (Iris Pseudacorus)
 Purple Loosestrife (Lythrum Salicaria)
 Meadowsweet (Filipendula ulmaria)
 Bog Bean (Menyanthes Trifoliata)
 Mentha pulegium (Pennyroyal)
 Fool's-water-cress (Helosciadium nodiflorum)
 Water crowfoot (Ranunculus aquatilis)
 Creeping Jenny (Lysimachia nummularia)
 Marsh marigold (Caltha palustris)

Bulbs to meadow = 74m2

Plant bulbs 60-70 bulbs per m2, 10-20cm apart, 10-15cm deep, in the areas as defined on the plan.

Narcissi 'Ice Follies'

Flowing meadow grassland = 625m2

Naturescape N5 Long Season Meadow Mixture (5g/m2)

Wetland meadow grassland = 393m2

Naturescape N8 Water's Edge Meadow Mixture (5g/m2)

General meadow grassland = 591m2

Naturescape N1 General Purpose Meadow Mixture (5g/m2)

Notes:

- All plant material to be compatible with BS3936 Part 1, 1992 specifications - 'Nursery Stock' BS4043.
- All quality of the landscape work/ planting to be compatible with BS4428 specification 1989 - landscape operations.
- The quality of the topsoil for all new planting areas to be to BS 3882:2015 specification.
- Tree pits to be dug 500mm wider than the tree root system. Tree pit to be backfilled with excavated subsoil to base and sides, with 300mm - 400mm depth of imported topsoil to BS 3882 to top layer. Tree pit drainage pipework may be required depending on site soil conditions. The base of the tree and its finished level after settlement, to be 150mm above adjoining levels.
- Tree specimens to be supported with double timber stake and rubber tie. Finished height of stake above ground to be 1/3rd of height of tree.
- Hedge specimens to be supported with a timber cane and protected with rabbit proof spiral guard.
- Tree positions are indicative and subject to change when setting out on site to determine best location.
- All planting to be carried out in the first planting and seeding season prior to the first occupation.

2m 5m 10m 25m N

C 301023	Additional Trees show mitigation for Ash Dieback
B 100123	Tree species change
A 081122	Minor layout updates
Rev	Date Note

o30landscape
 Northcourt House, Shorwell, Isle of Wight, PO30 3JG
 www.o30landscape.co.uk

Client
Foreland Homes Ltd

Project
The Brambles, Niton

Drawing title
Soft Landscape Plan

Drawing number
o30_152_801 C

Scale
1:500 @ A2