



Indicates A Residual Risk As A Warning

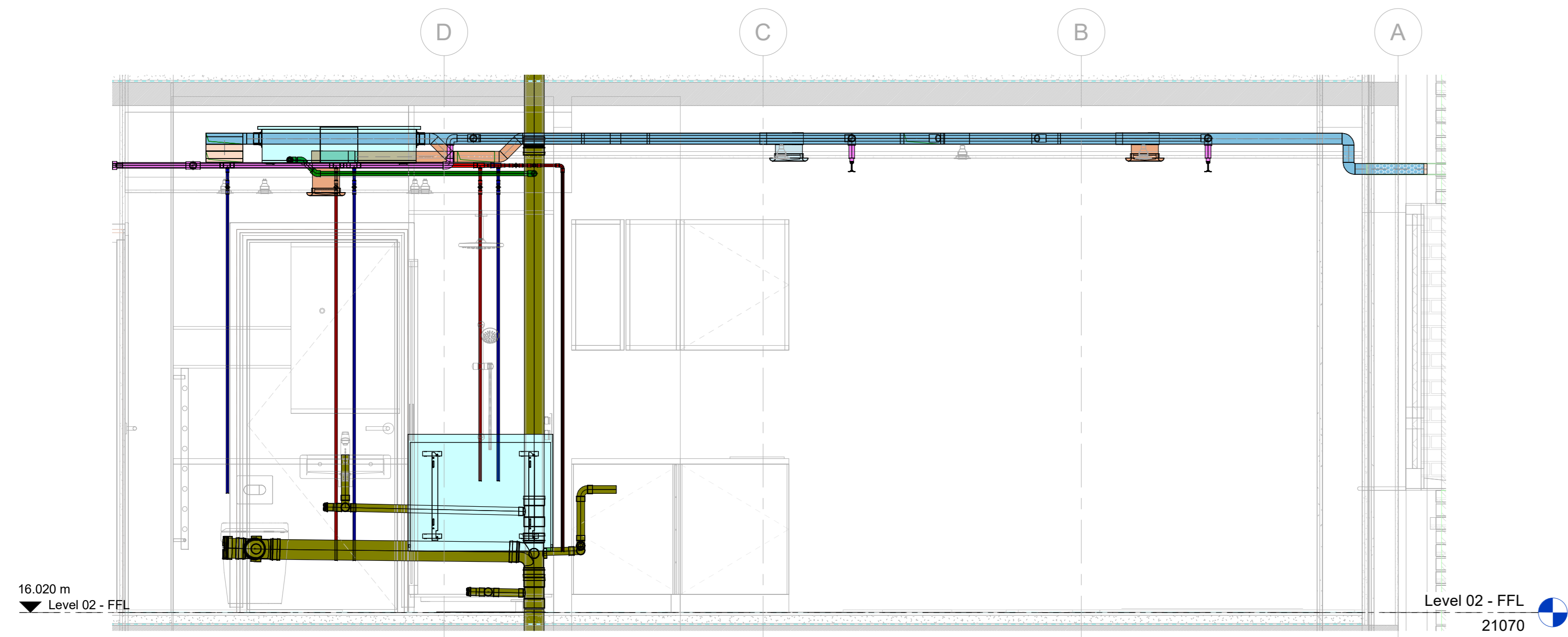
The design team have highlighted unusual and significant risks that may not be obvious to a competent contractor. They are to assist with risk reduction only and are not necessarily comprehensive. It is assumed that all works will be carried out by a competent contractor working, where appropriate, to an approved method statement.

General Notes

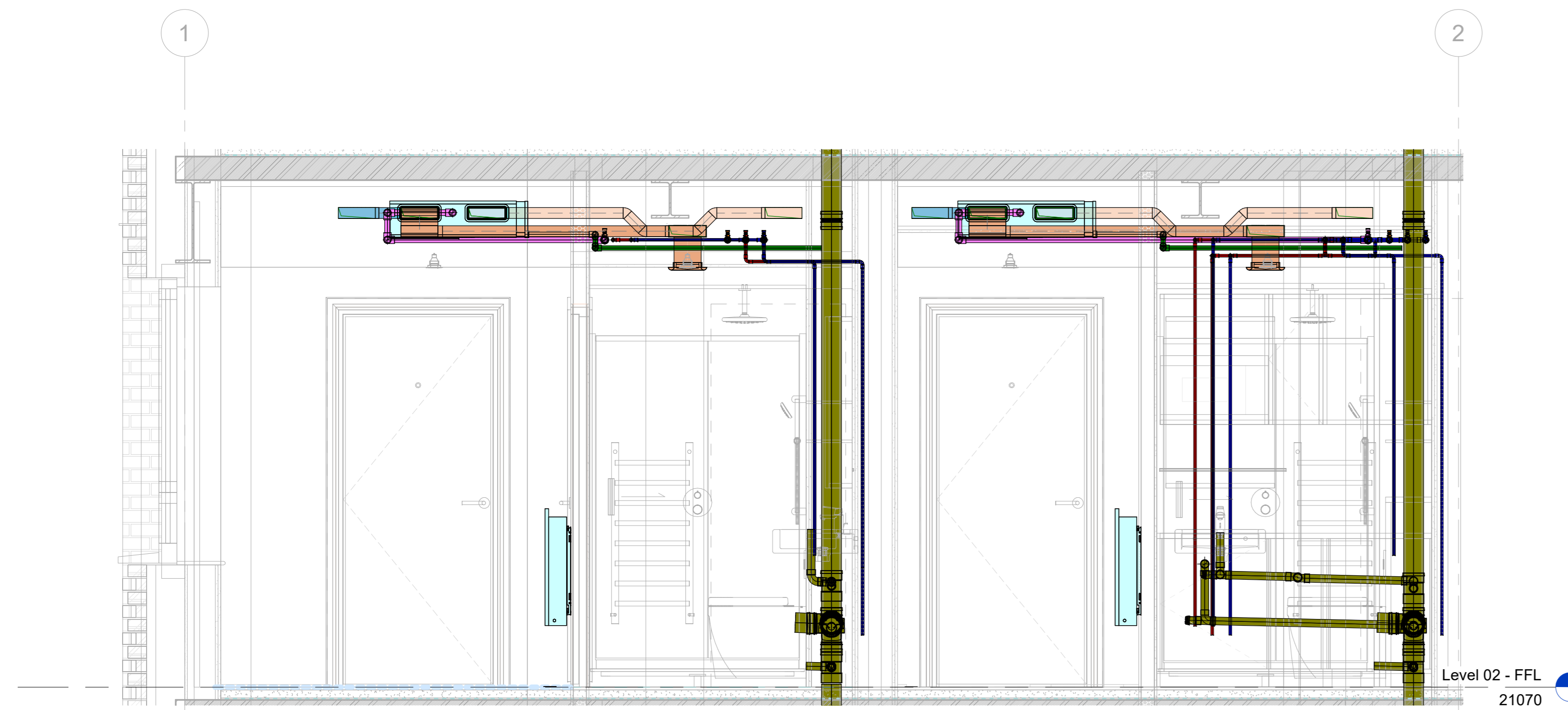
- Mechanical Services shall comply with all relevant Building Regulations (and approved documents), The Gas Safety (Installation and Use) Regulations 1998, The Water Supply (Water Fittings) Regulations 1999, WRAS Regulations, CIBSE, CIPHE and RGM guidelines of practice.

LEGEND

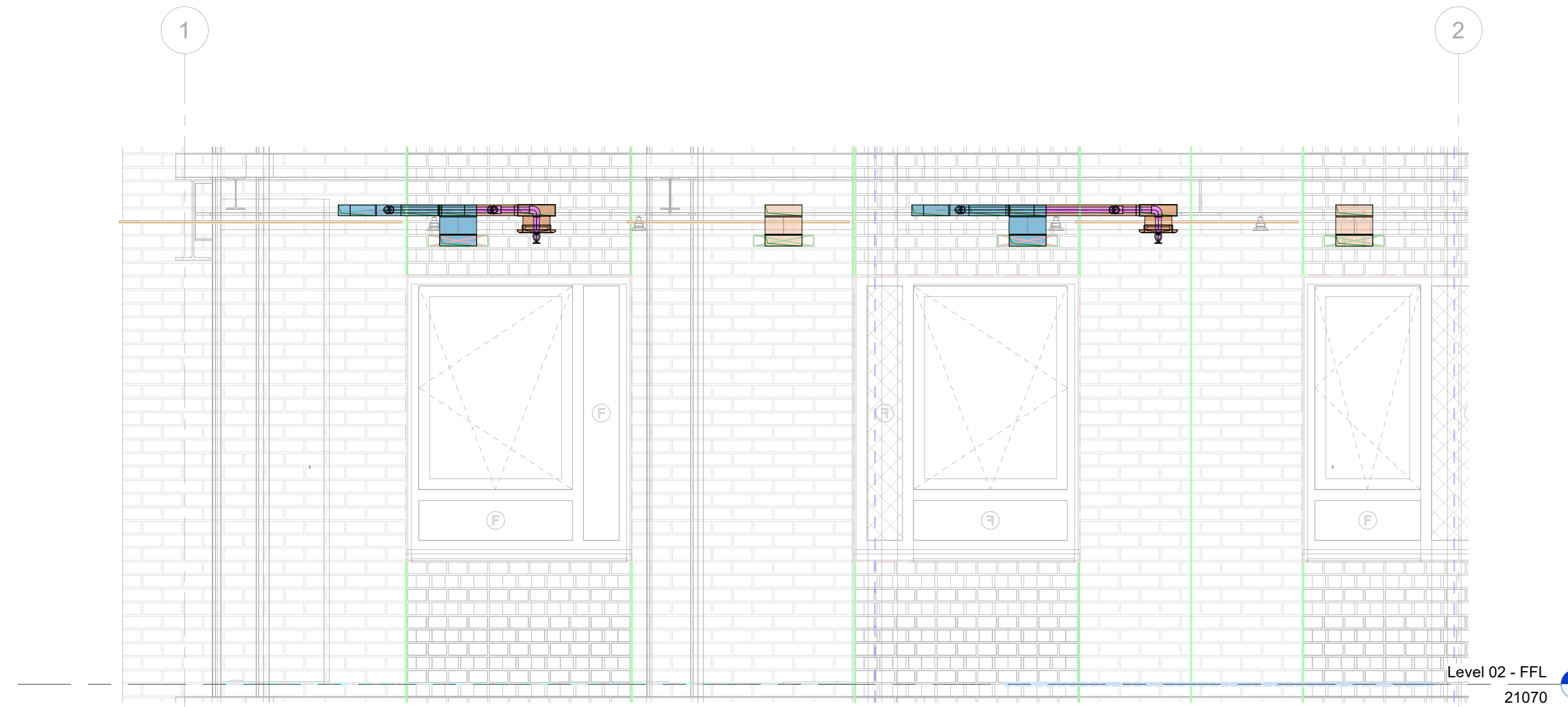
- DUCTWORK SUPPLY
- DUCTWORK EXTRACT
- DUCTWORK EXHAUST
- DUCTWORK FRESH AIR
- DHWSF CHILLED WATER FLOW
- DHWSR CHILLED WATER RETURN
- BCWS BOOSTED COLD WATER
- CONDENSATE
- SVP SOIL VENT PIPE
- SPR COMMERCIAL SPRINKLER PIPE
- DSPR DOMESTIC SPRINKLER PIPE



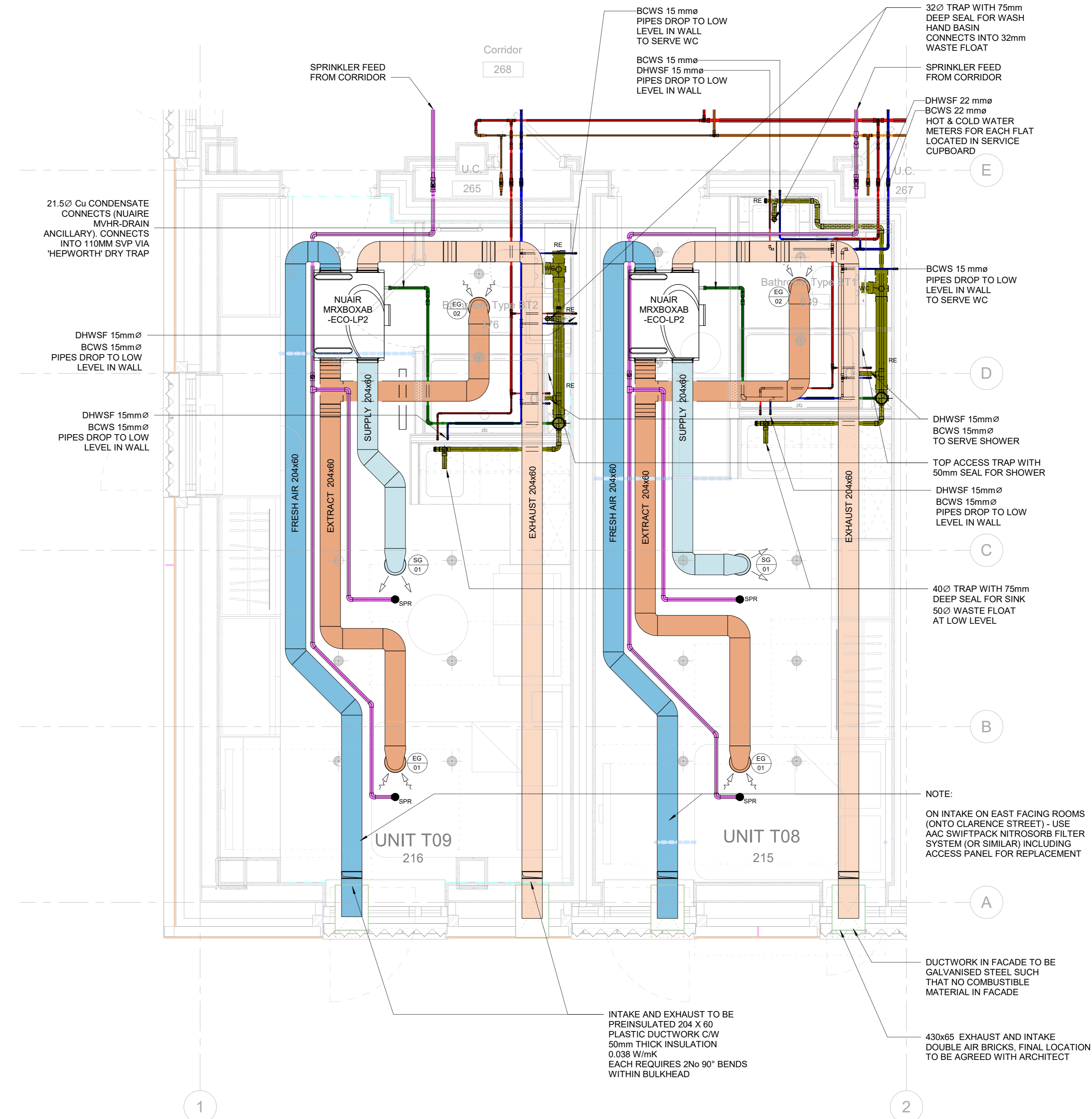
2 APARTMENT TYPE 01 SECTION A  
1 : 20



3 APARTMENT TYPE 01 SECTION B  
1 : 20



4 APARTMENT TYPE 01 SECTION C  
1 : 20



1 TYPICAL APARTMENT MECHANICAL SERVICES DRAWING  
1 : 25

T01	Tender Issue	27/06/23
P04	Sections	16/05/23
P03	Skelly & Couch Comments	24/04/23
	Incorporated	
P02	Skelly & Couch Comments	07/04/23
	Incorporated	
P01	Preliminary Issue	30/01/23
Rev	Description	Date
Revision Schedule		



Carmel MEP Consulting Ltd  
 44 (0) 1346 575 800  
 44 (0) 1346 575 801  
 543 4FR  
 cemail@carmelmepltd.com  
 44 (0) 1346 575 800  
 44 (0) 1372 746 501  
 KT19 9BE  
 cemail@carmelmepltd.com



Client  
**THE REX KINGSTON**

Title  
**Typical Apartment Mechanical Services**

Drawing No:  
**5683-MEP-ZZZ-ZZ-DR-U-3100**

Project No:	Scale:	Size:	Revision:
<b>C02478</b>	<b>As indicated</b>	<b>0</b>	<b>T01</b>

Final Check For Issue	Initials	Signature	Date
(uncontrolled copy unless signed)			

