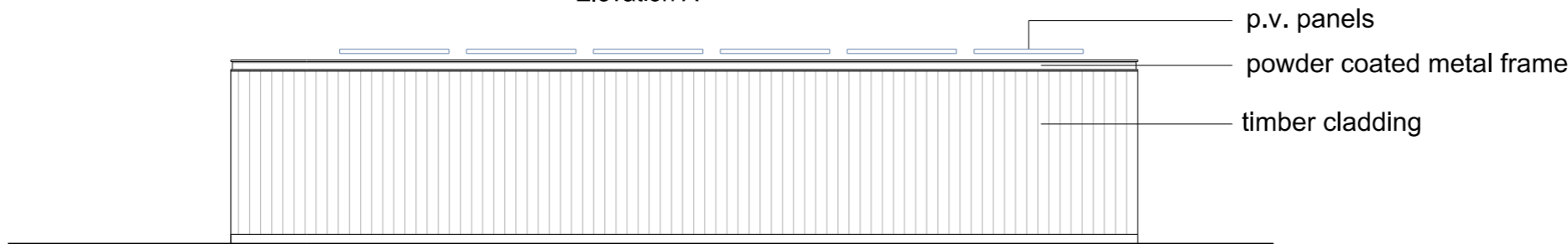
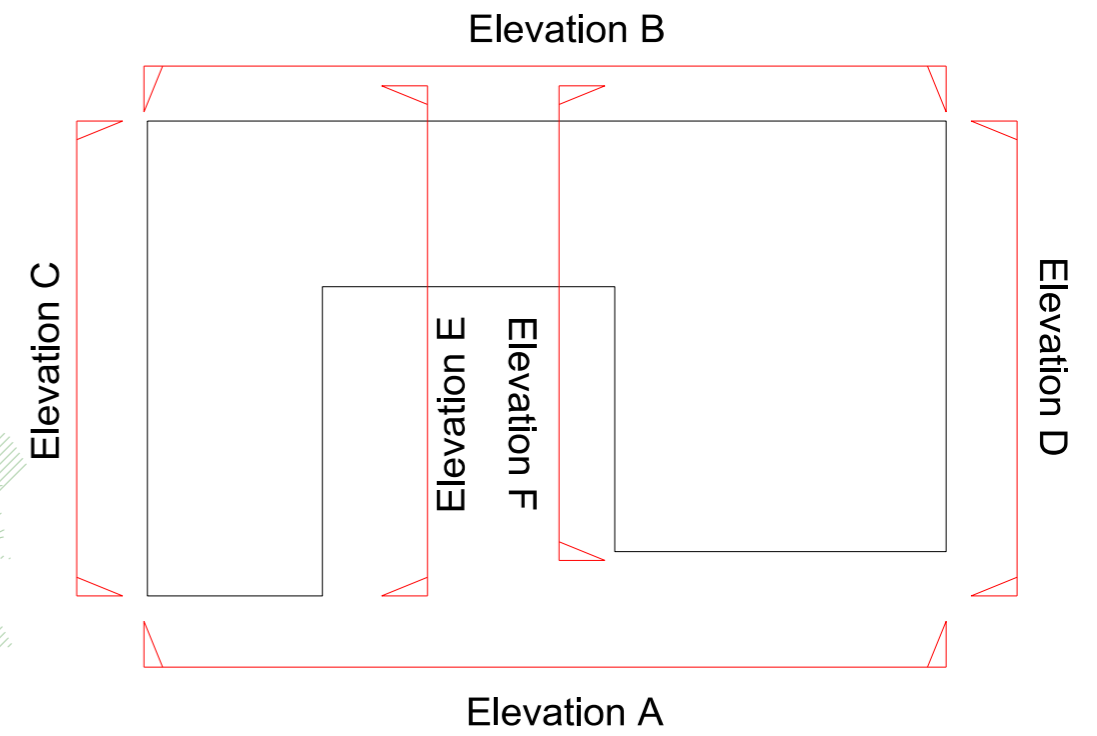
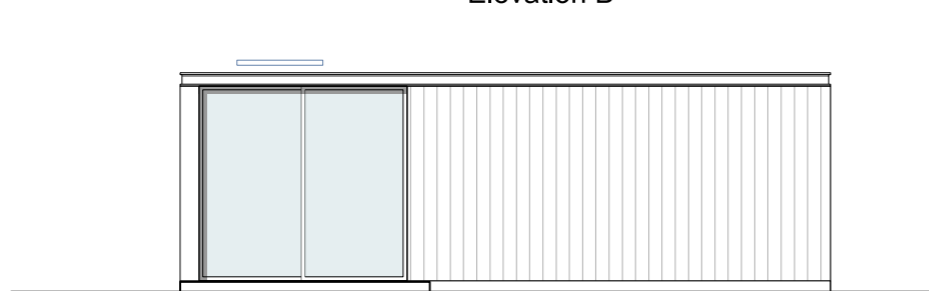


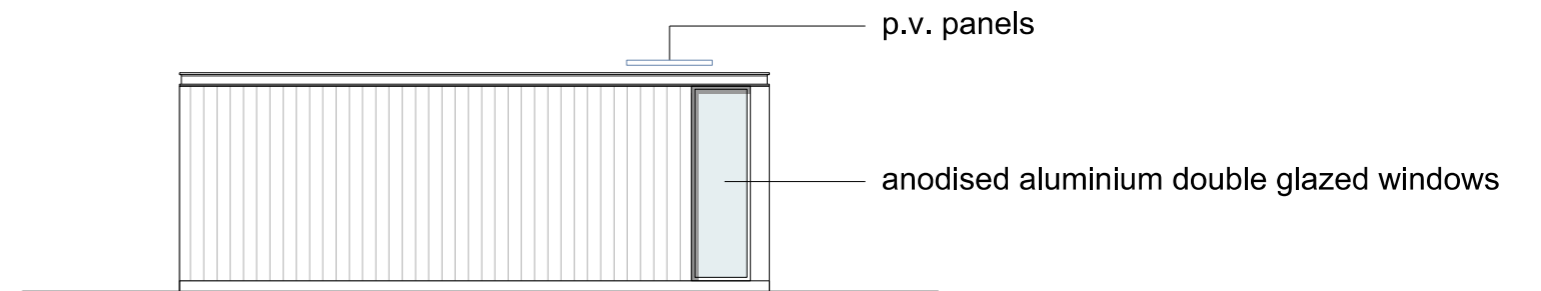
Elevation A



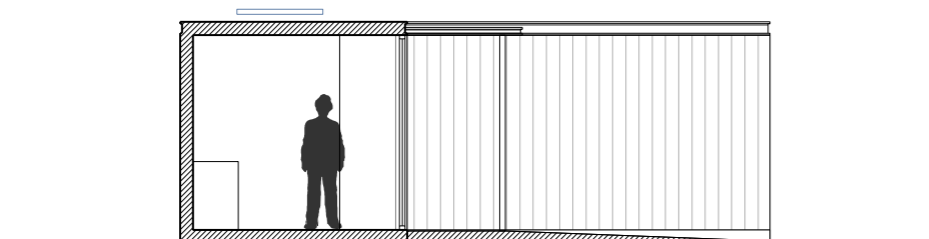
Elevation B



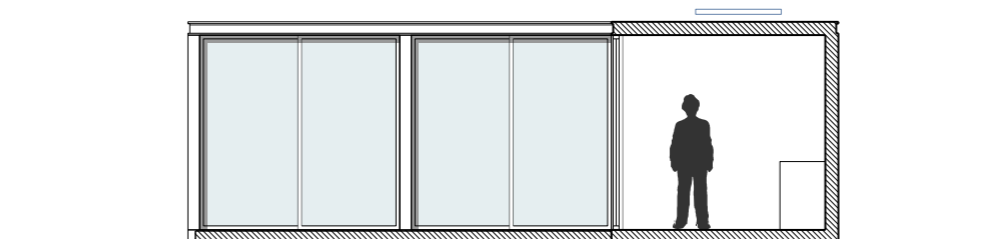
Elevation C



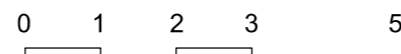
Elevation D



Elevation E



Elevation F



The Stables Hunsdonbury House
Proposed Elevations

G M L Architects

UNIT 3,1-4 Christina Street, London, EC2A 4PA
Tel: 020 7729 9595 Fax: 020 7729 1801 info@gmlarchitects.co.uk
SCALE: 1:100@A3
ISSUED FOR: PLANNING
FIRST ISSUED: 10/2023
DRAWN BY:XXX CHECK BY:XXX

5011/PA/016