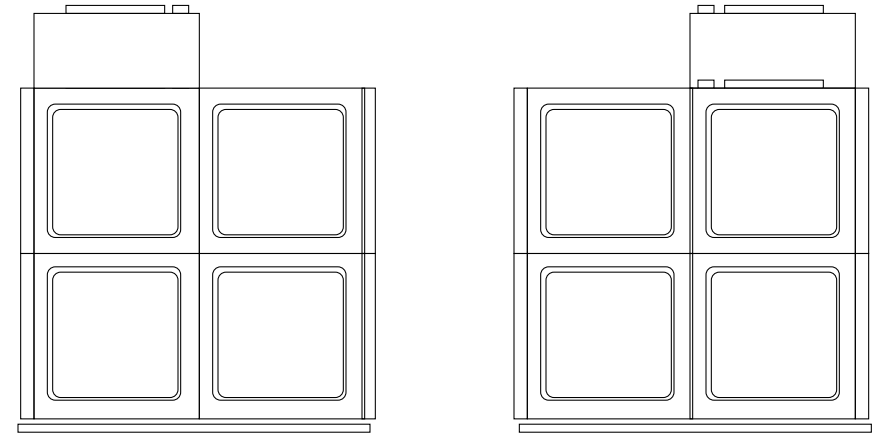
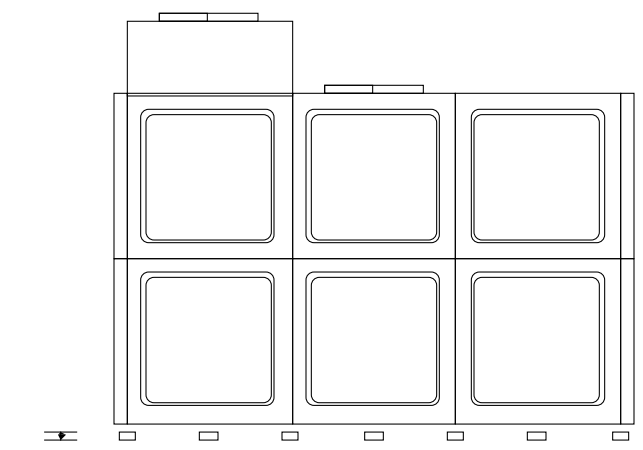


V2.39 19-06-14

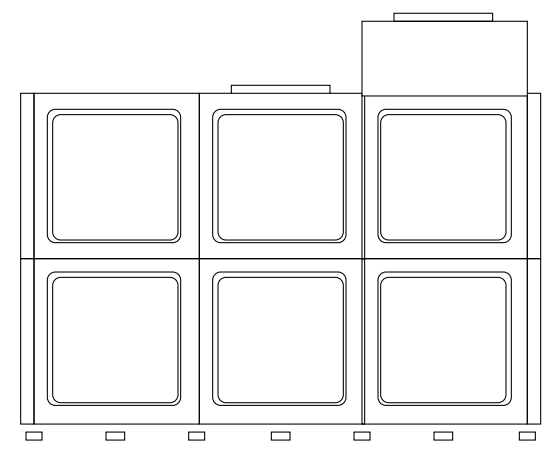


Elevation B

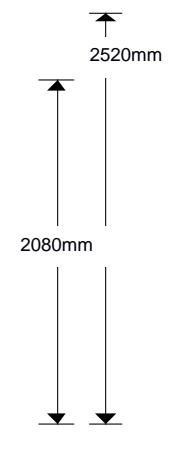
100x50x3mm by 2150mm steels
Elevation D



Elevation A



Elevation C



50mm

- A. 1 No . 820546 . Inlet . 2" Keraflo Float Valve Type KB HF
- B. 2 No . 104137 . Outlet . 2" PVC PN16 Stub Flange Assembly c/w Down Elbow
- C. 1 No . 104144 . Drain . 1" PVC Flanged Tank Connector Assembly (Male BSP) c/w Down Elbow
- D. 1 No . 821201 . Warning pipe . 3/4" Screened Overflow / Warning Pipe - R30E
- E. 1 No . 900027 . Overflow . 4" Screened Overflow Assembly + Internal Elbow (Type 16)
- F. 1 No . 900376 . Level switch low . LS7 PPS Level Switch c/w half inch NPT Threaded Flange - Low Level Switch
- G. 1 No . 900377 . Level switch high . LS7 PPS Level Switch c/w half inch NPT Threaded Flange - High Level Switch
- H. 1 No . 825510 . Immersion . Immersion Heater 3KWx760mm 4 Deg c/w 2" BSP PVC Flange

In accordance with our normal policy on product development, this specification is subject to change without notice.

SCALE : n/a	DRAWN BY: ITRAK	TITLE: Cold Water Storage Tank - General Arrangement	Filpumps Limited
DW-165692-659136	DATE: 17-07-2023	SIZE: Internal 3,000 X 2,000 X 2,000, External 3,150 X 2,150 X 2,080	Bridge of Garin