



PROJECT  
**DS Dagleish**

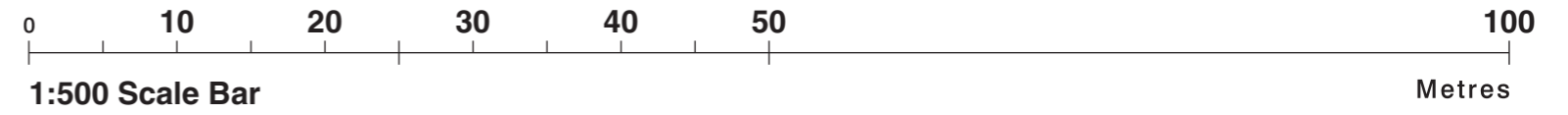
ADDRESS  
**111 Melrose Rd  
Galashiels  
TD1 2BZ**



the sign of excellence

DRAWING  
**30157v01**  
**Issue 02 - 24-07-23**





B  
A  
C  
E

D



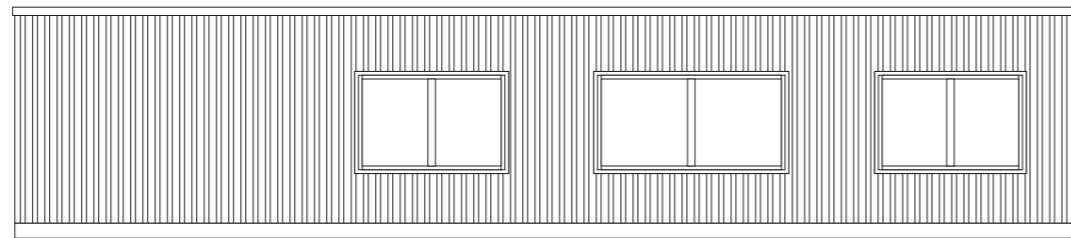
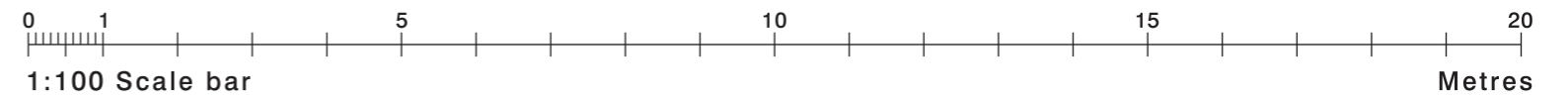


Existing

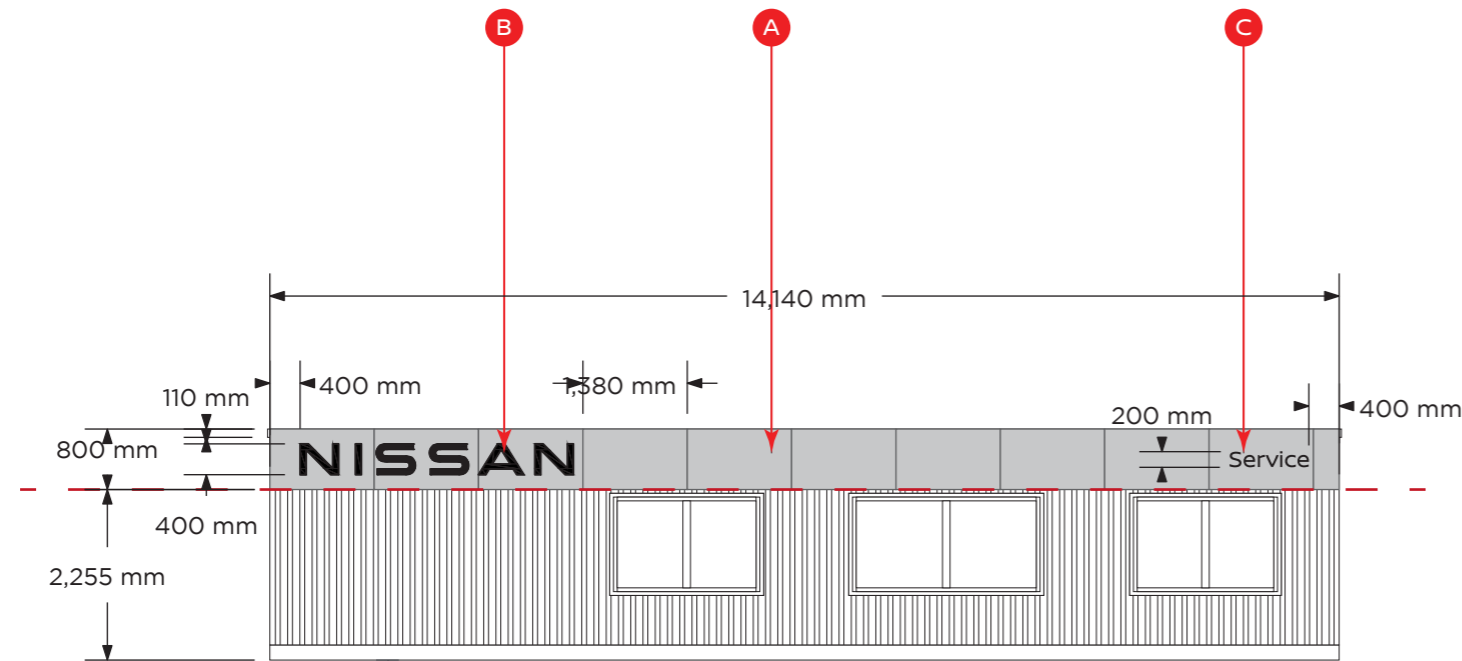
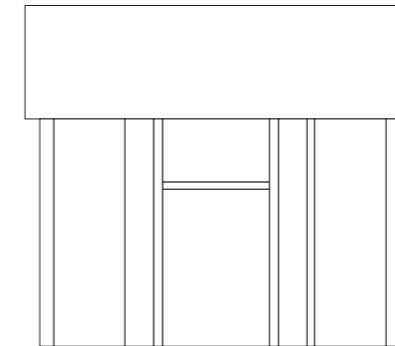


Proposed

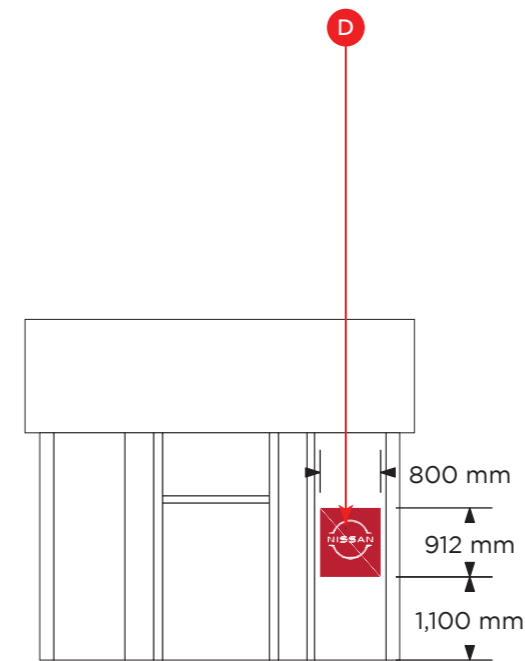




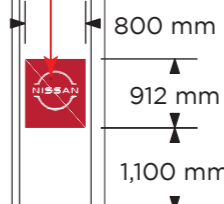
Existing



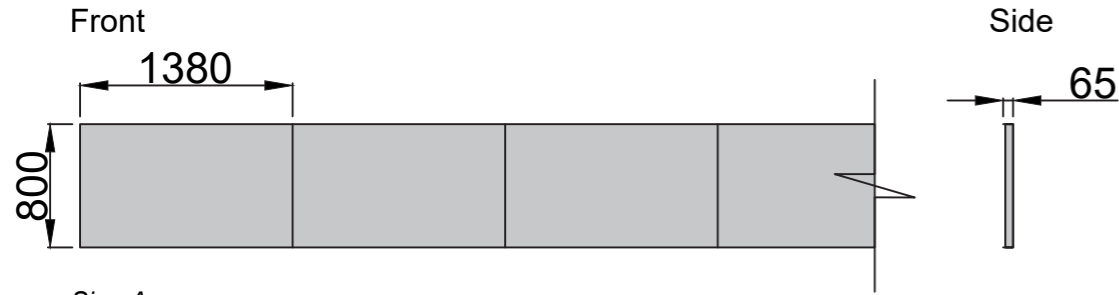
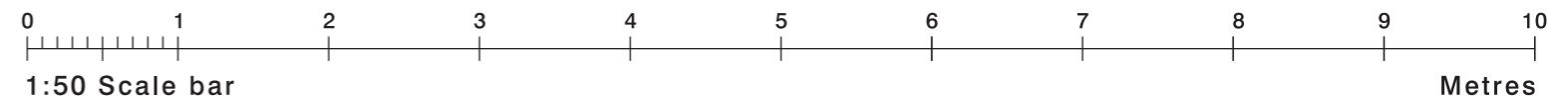
Proposed



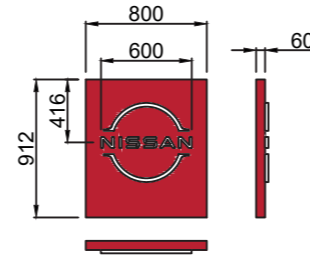
28mm packing required with fascia.



# Signage Specification



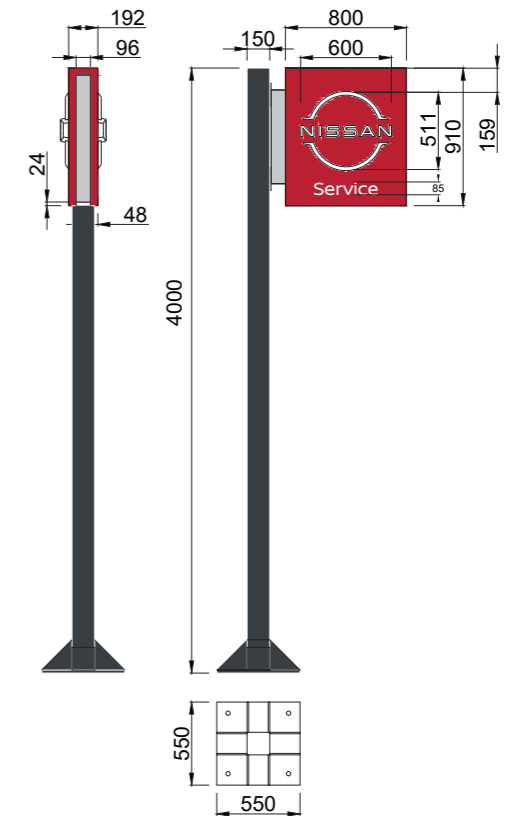
**Sign A:**  
**ACM-1 Back Panels Size 2 - Ref. 4.52**  
**Material:**  
 Silver ACM  
 Silver RAL9006, PMS Cool Grey 4  
 Scale 1:50 @ A3



**Sign D:**  
**NEXT Entry Element Size 2**  
**Logo Illumination:**  
 Internally Illuminated with White LEDs  
**Material:**  
 Internal Aluminium Frame  
 4mm ACM - Nissan Red NVR-01, RAL3001, PMS200  
 Scale 1:50 @ A3



**Sign B:**  
**Nissan Wordmark Size 2**  
 Individual 3D letters  
**Face Illumination:**  
 Internally Illuminated with white LEDs  
**Material:**  
 1mm Hairline S/S Returns  
 4mm Black/White Acrylic Front Face  
 Scale 1:50 @ A3



**Sign E:**  
**Projecting Sign 7 Mast - Size 2**  
**PROJECTING SIGN:**  
 Internally Illuminated with White LEDs  
**Material:**  
 Internal Steel Frame  
 4mm ACM - Nissan Red NVR-01, RAL3001, PMS200  
 4mm ACM - Silver - RAL9006, PMS Cool Grey 4  
 White vinyl 'Service'  
**MAST:**  
 Steel Fabricated Mast Finished RAL 7016  
 Scale 1:50 @ A3



**Sign C:**  
**Service Sign Size 2**  
 Individual 3D letters  
**Face Illumination:**  
 Internally Illuminated with white LEDs  
**Material:**  
 1mm Hairline S/S Returns  
 4mm Black/White Acrylic Front Face  
 Text font: Nissan Brand, Regular  
 Scale 1:50 @ A3