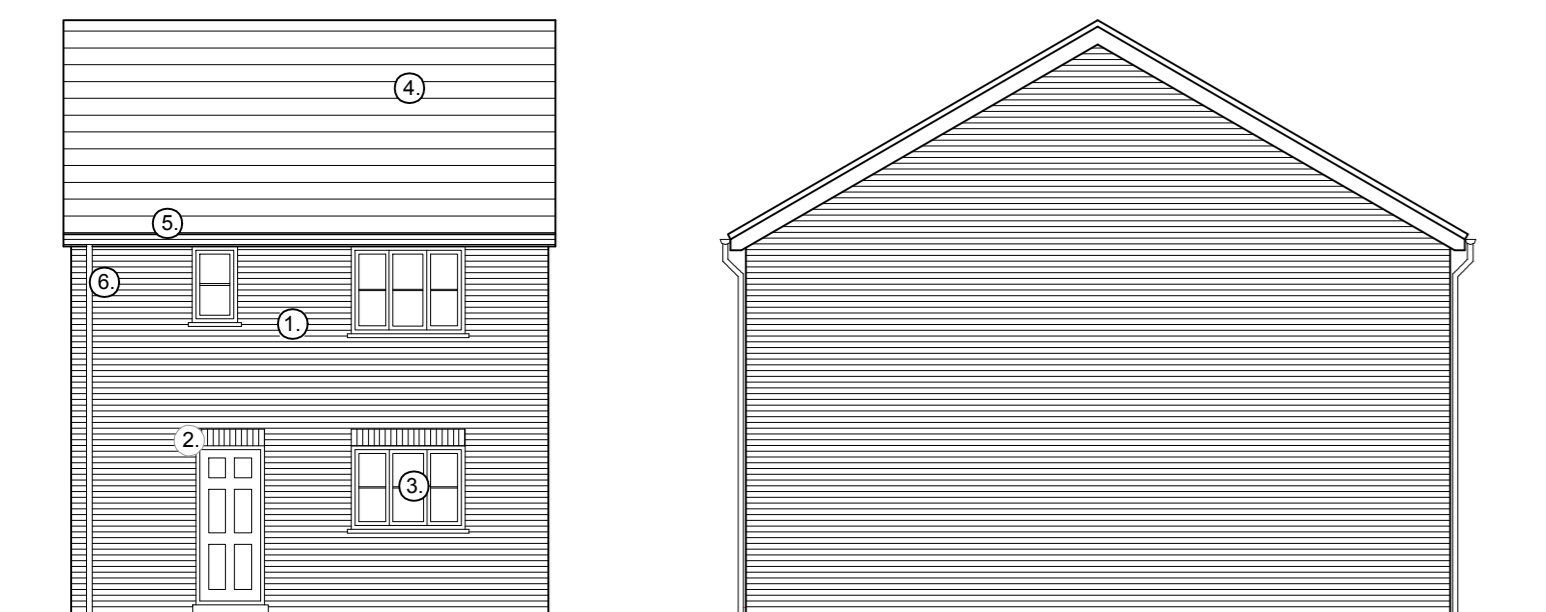


○ STREET ELEVATION



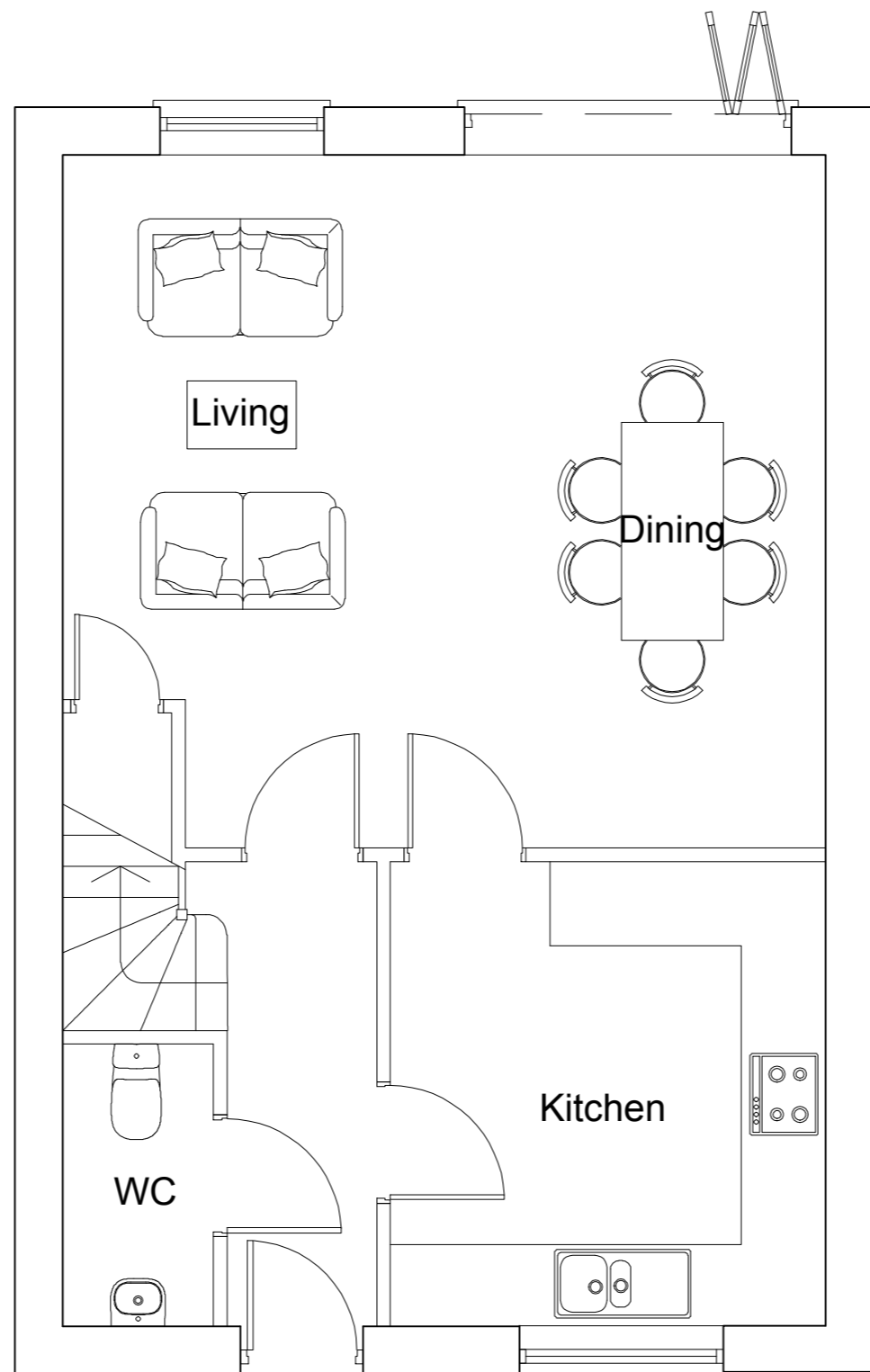
○ FRONT ELEVATION

○ SIDE ELEVATION

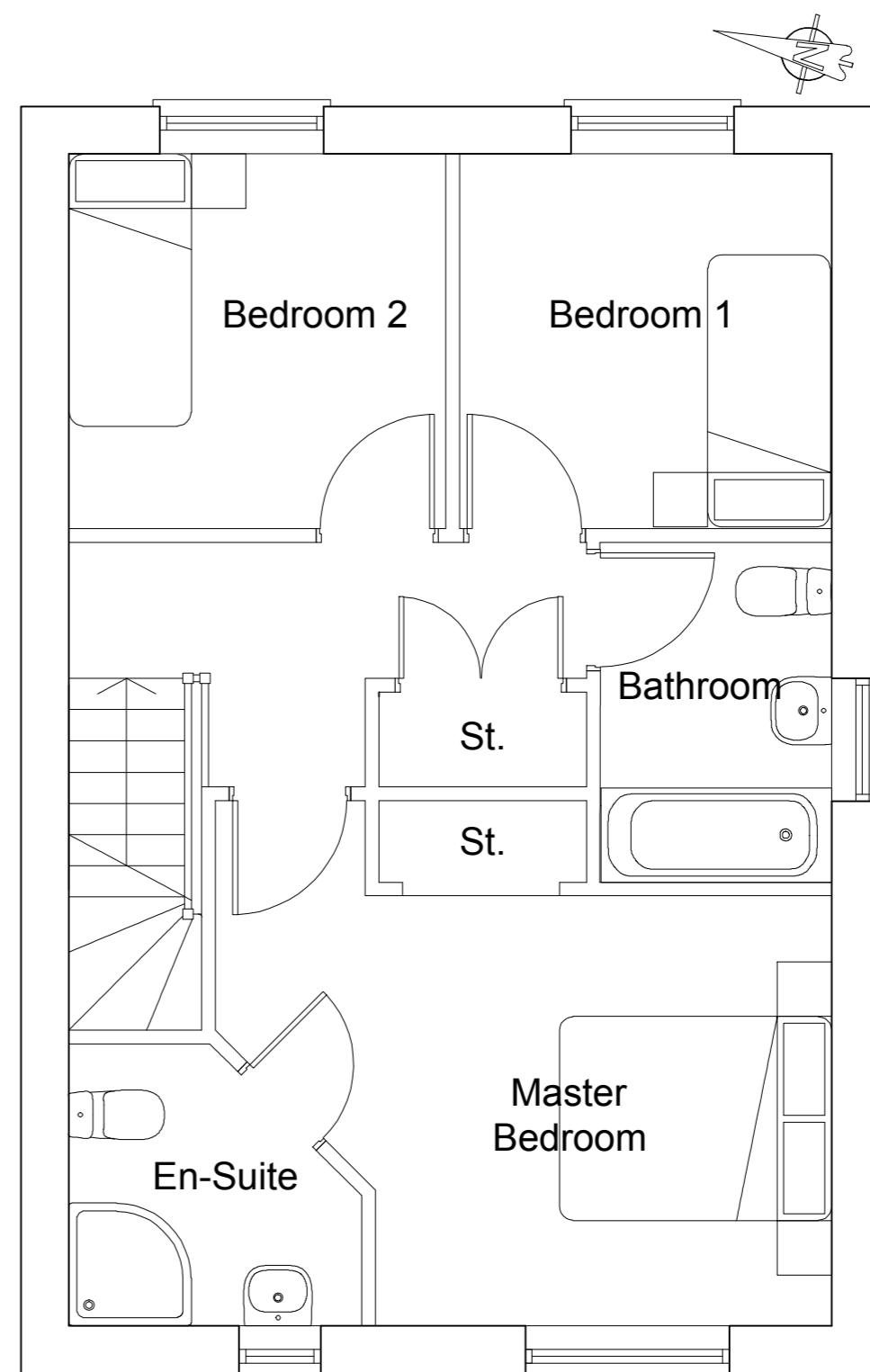


○ SIDE ELEVATION

○ REAR ELEVATION



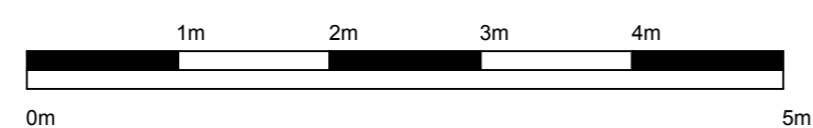
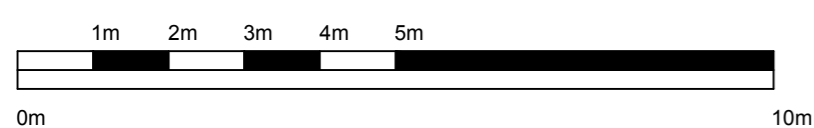
○ GROUND FLOOR PLAN



○ FIRST FLOOR PLAN

External Materials

- ① Red Facing Brick
- ② Soldier Brick Course Detailing
- ③ Anthracite Grey UPVC windows and doors
- ④ Black Smooth Fibre Cement Roof Slates
- ⑤ Anthracite Grey UPVC fascia, soffit and bargeboards
- ⑥ Black UPVC Rainwater Goods



project
WINDMILL
RAMSGATE
CT12 6EW

drawing
PROPOSED PLANS & ELEVATIONS

scale 1:100 / 1:50 @ A2	date OCT 23
drawn	checked

job no 22.3364	dwg no 103	rev P8
-------------------	---------------	-----------