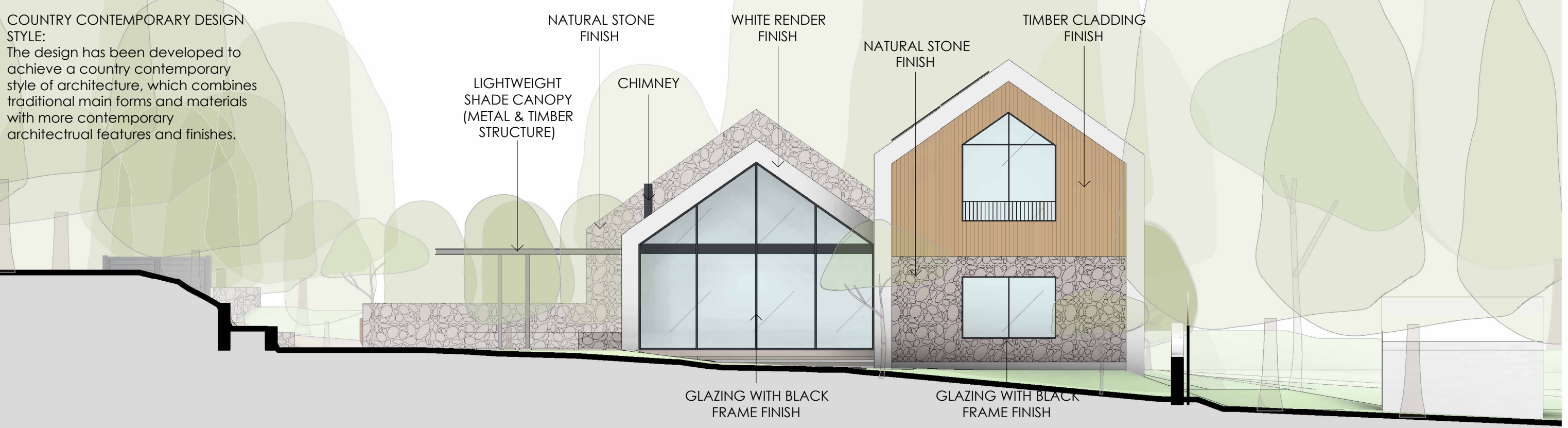


COUNTRY CONTEMPORARY DESIGN STYLE:  
The design has been developed to achieve a country contemporary style of architecture, which combines traditional main forms and materials with more contemporary architectural features and finishes.



LIGHTWEIGHT  
SHADE CANOPY  
(METAL & TIMBER  
STRUCTURE)

NATURAL STONE  
FINISH

WHITE RENDER  
FINISH

NATURAL STONE  
FINISH

TIMBER CLADDING  
FINISH

CHIMNEY

GLAZING WITH BLACK  
FRAME FINISH

GLAZING WITH BLACK  
FRAME FINISH



1:100 @ A1

PROPOSED NORTH EAST ELEVATION