

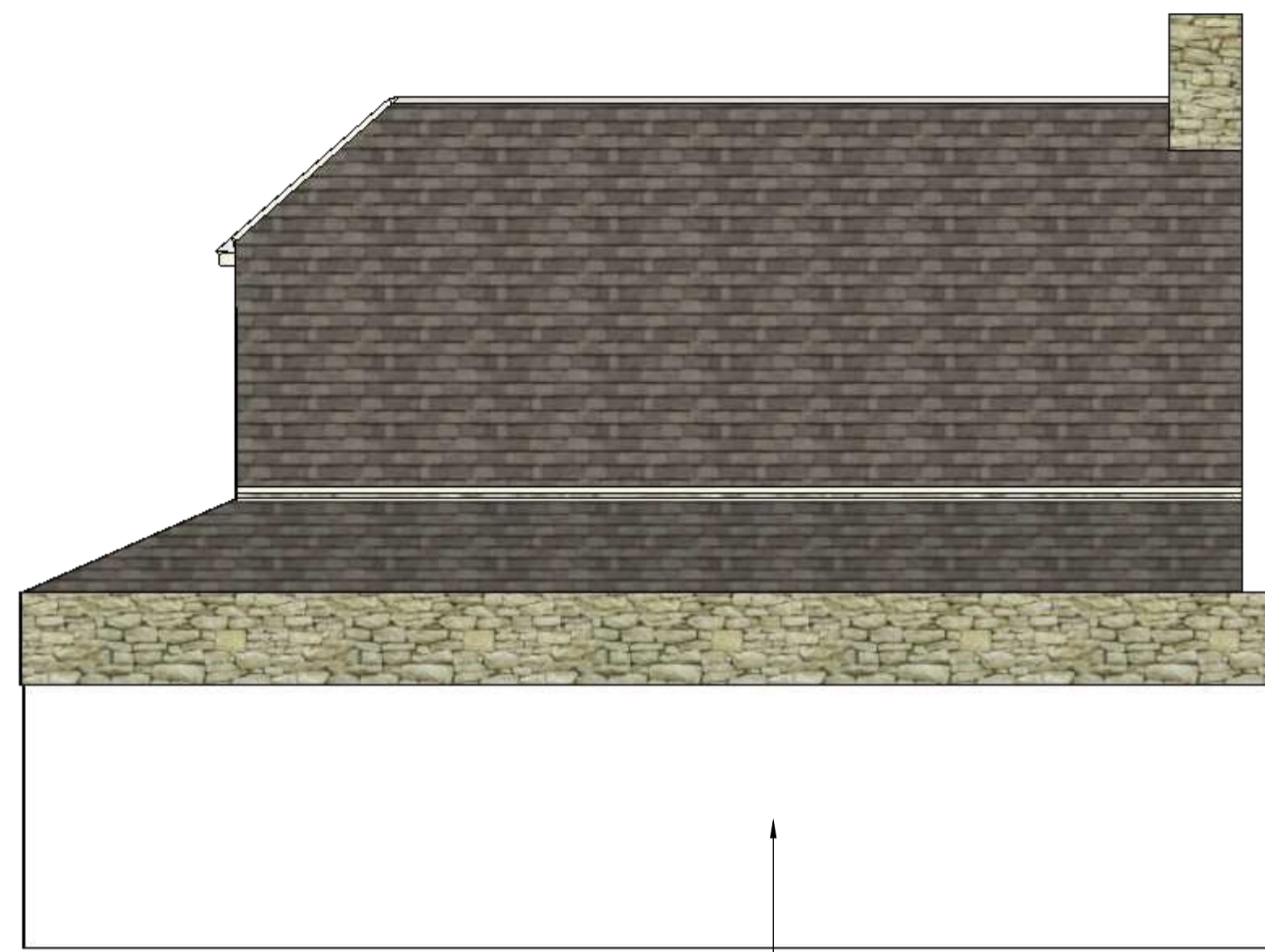


WEST ELEVATION

Replace all windows with Flush style UPVC in Agate Grey to match proposed detached annex

New stonework to old entrance way with new window

Replace window with doorway

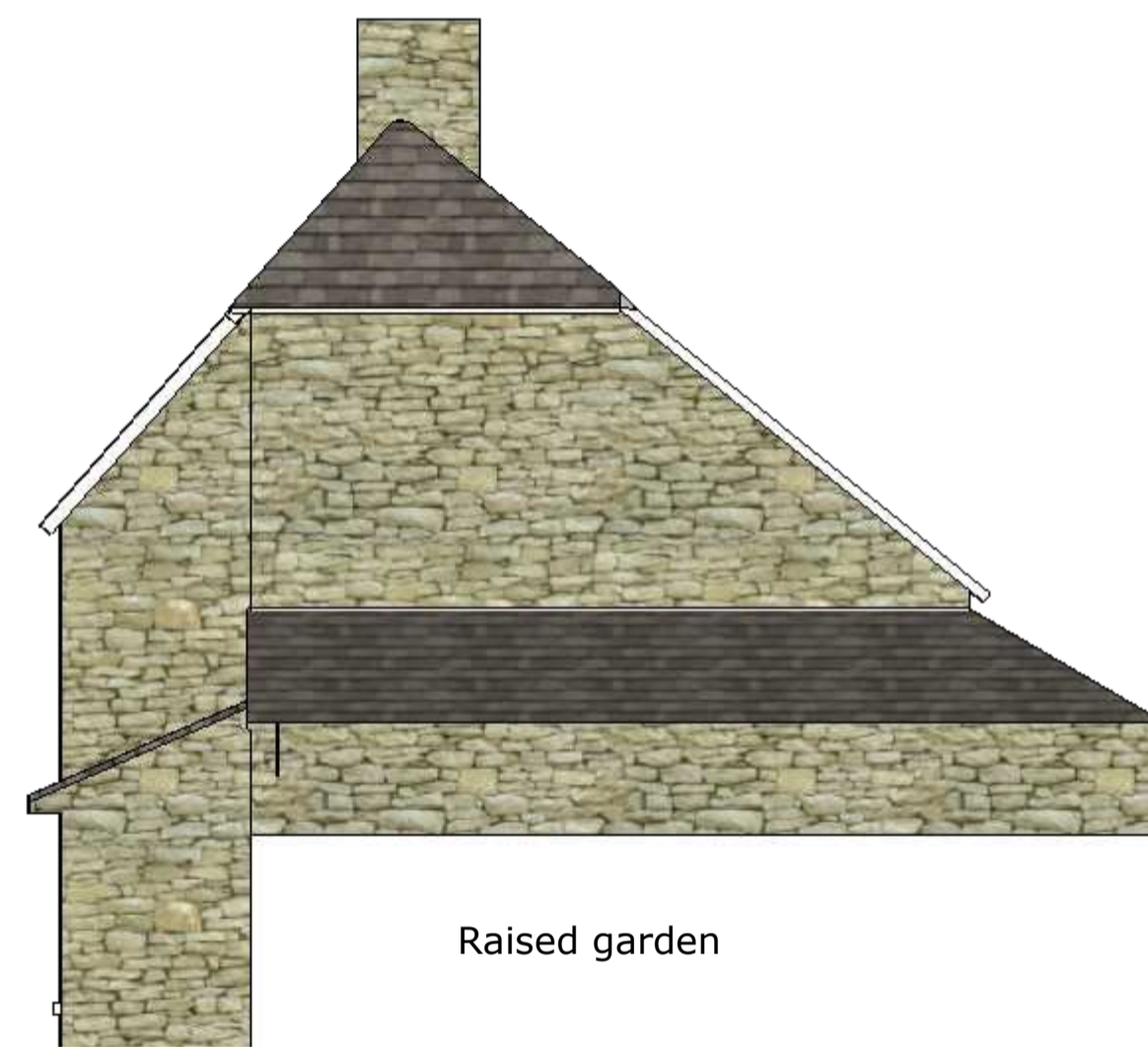


EAST ELEVATION

Approx line of retaining wall

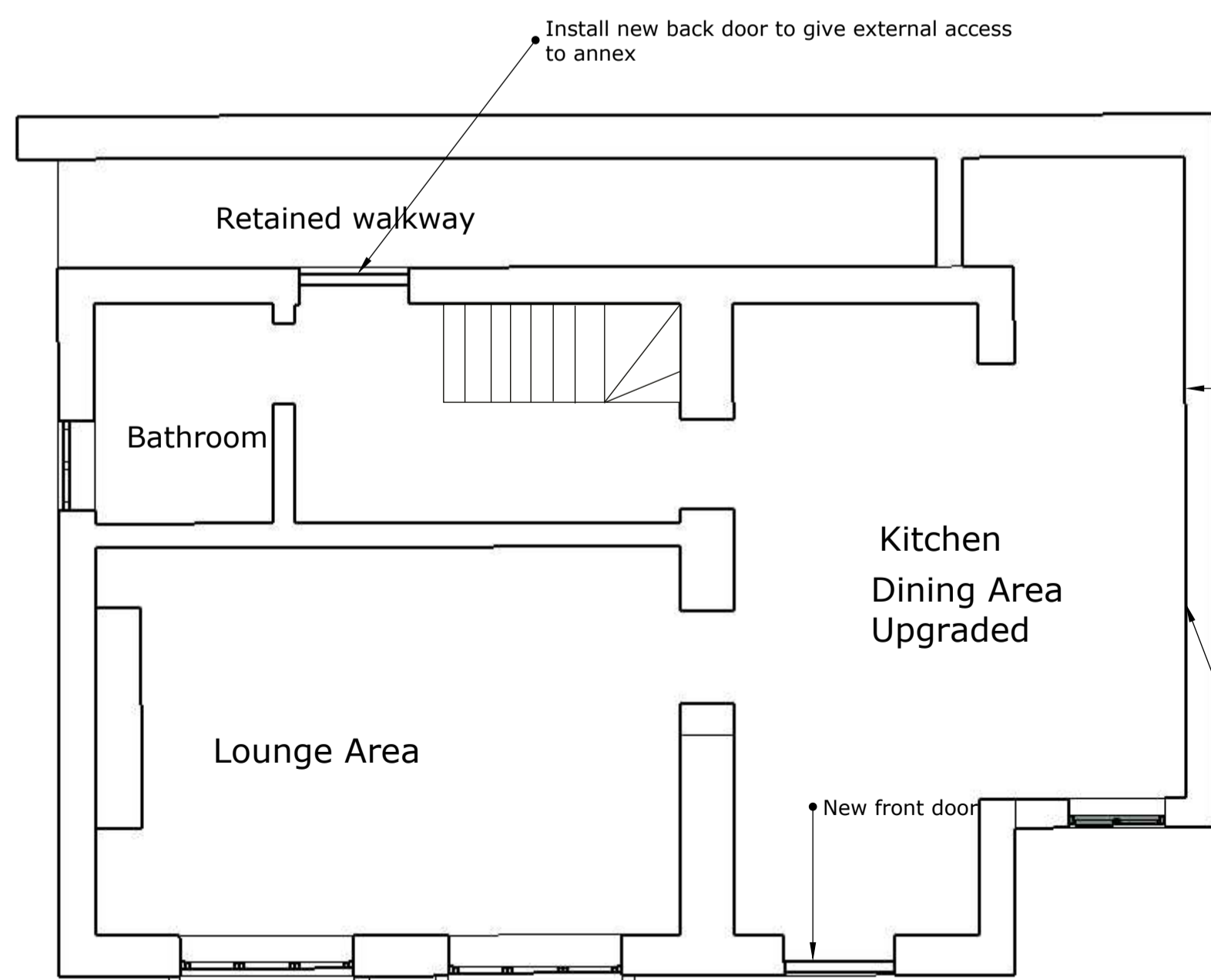
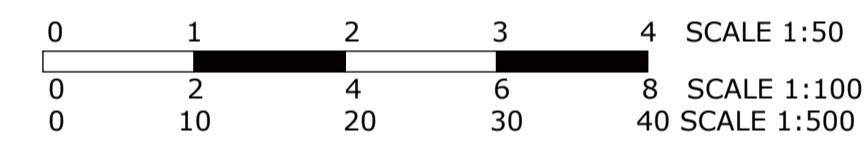


NORTH ELEVATION



SOUTH ELEVATION

Raised garden



GROUND FLOOR PLAN

Install new back door to give external access to annex

Retained walkway

Bathroom

Lounge Area

Kitchen Dining Area Upgraded

New front door

Make walkway habitable standard and open up kitchen diner

Remove Perspex roof and replace with new Cotswold stone tile effect (Marshfield Stone). Vertical Perspex areas replaced with Cotswold stone. Insulate and stud out internal walls. Allow for diverting ground water drainage using Delta System. Allow to insulate and plasterboard internal walls



FIRST FLOOR PAN

Remove Perspex roof and replace with new Cotswold stone tile effect (Marshfield Stone). Vertical Perspex areas replaced with Cotswold stone. Insulate and stud out internal walls. Allow for diverting ground water drainage using Delta System. Allow to insulate and plasterboard internal walls



Partridge Architectural Services

Partridge House, Pinkney
Malmesbury, Wilts SN16 0NZ
Tel 07833433872
Email
mark@hmccontracting.co.uk

PROJECT:

Smerrill Farm
Kemble
GL7 6BW

Detached Annex

DRAWING NO	Revision
MHSFEco 004	A

Changes to Cottage Proposed

SCALE	PAPER
1:50	@ A1

NOTES