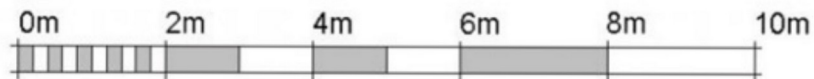
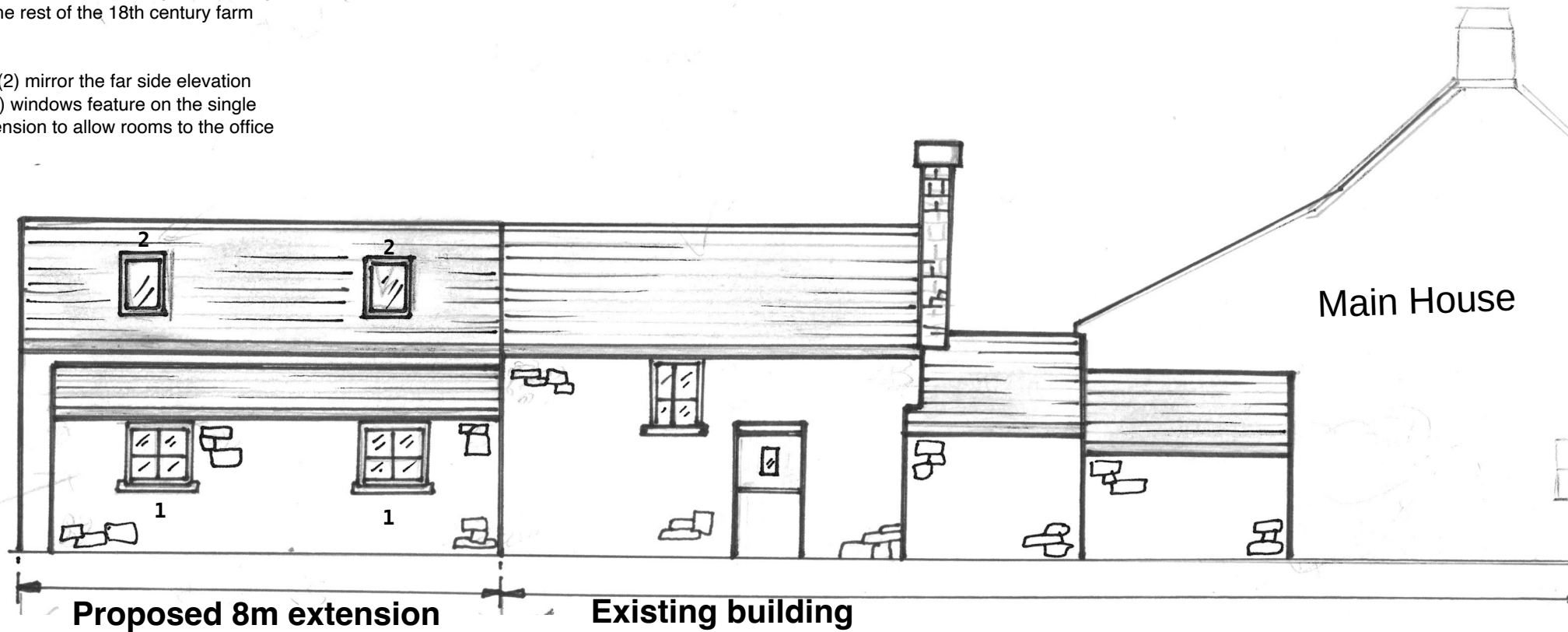


# Hawthorns side elevation

The double story extension will match the existing building in width height and style with roman red clay tiles and stone facing, in keeping with the 18th century farm house

To the side of the double story element we propose a small 1.5m single story section which will provide an office space, downstairs toilet and storage with facing and tiling to match the rest of the 18th century farm house

Two velux windows (2) mirror the far side elevation  
Two 1.2m X 1.2m (1) windows feature on the single story part of the extension to allow rooms to the office and toilet areas



1:100