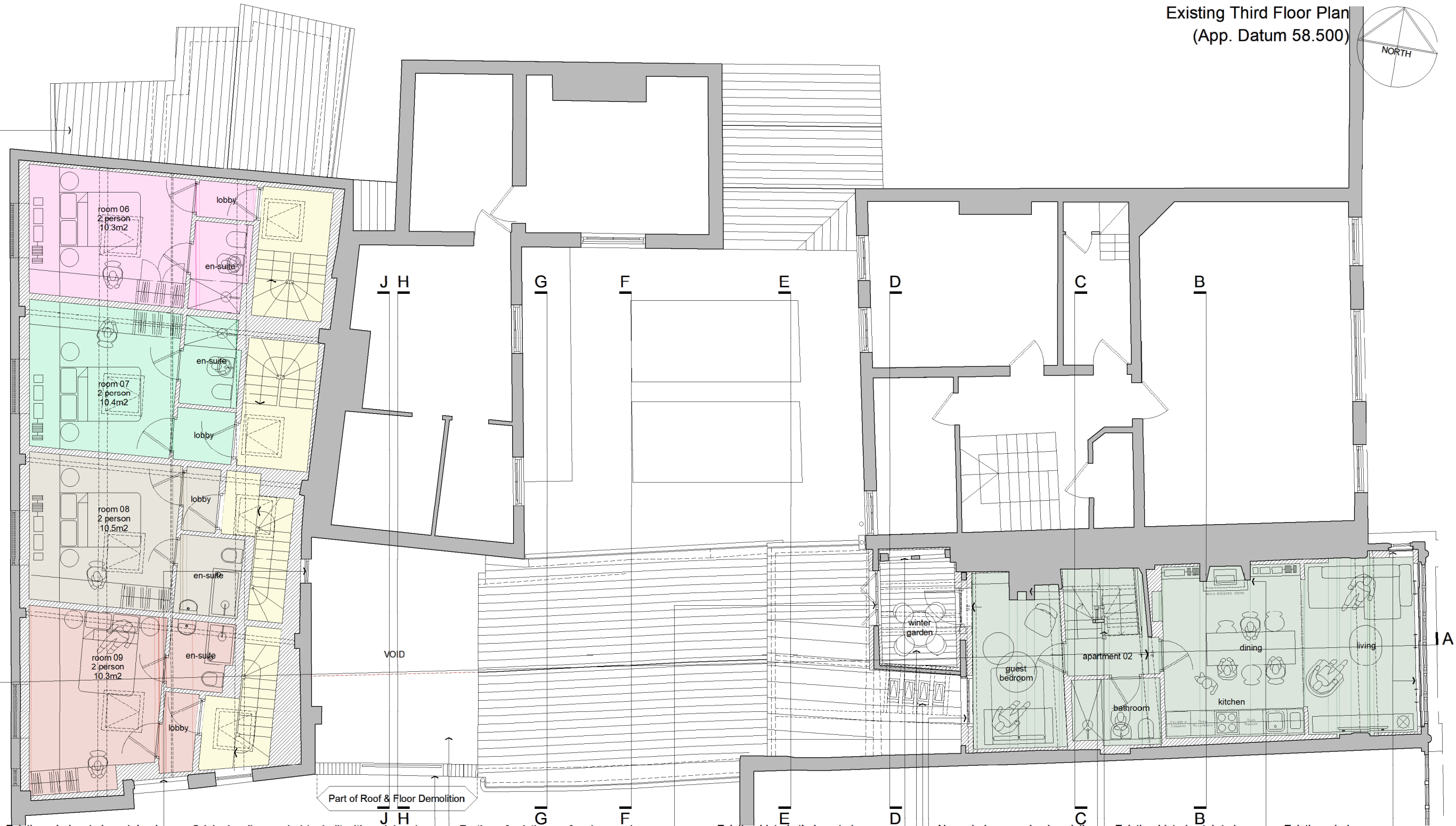




New extension in matching materials to form ex-suite.



Existing window to be retained. Opening to be blocked up internally with lightweight insulated partition.

Original wall amended / rebuilt with reclaimed bricks complete with brick on edge parapet / coping detail and lime mortar joints to act as boundary wall. Metal balustrade added in former window opening as "shadow/ reminder".

Part of existing roof and second floor removed (walls retained) to form visual separation and new internal courtyard.  
New handmade sliding/ folding double glazed timber window.

Existing historic timbers to be exposed/ retained and refurbished to receive lime wash finish.  
New winter garden to be formed

New window opening in existing larger opening to receive hand made double glazed timber window.  
New "in rafter" conservation roof lights between historic roof timbers.

Existing historic stair to be retained and made good.  
Existing fire place to be retained. Brick to be repaired with lime mortar joints.

Existing windows refurbished and new secondary glazing added.  
Existing historic fire surrounds to be retained and refurbished with opening restored.

- KEY:**
- ORIGINAL BUILDING
  - NEW CONSTRUCTION
  - AMENDED CONSTRUCTION
  - EXISTING PARTITIONS REMOVED
  - EXISTING RETAIL
  - ROWS & STALLS
  - CIRCULATION
  - PROPOSED RETAIL
  - PROPOSED RETAIL BOH
  - WC'S
  - TERRACE BOH

**SCHEDULE OF ACCOMMODATION: AS EXISTING**

LEVEL	GIFA	
	M2	SQFT
GROUND FLOOR	220.9	2377.7
FIRST FLOOR	246.8	2656.5
SECOND FLOOR	250.5	2696.4
THIRD FLOOR	56.3	606.0
FOURTH FLOOR	42.6	458.5
<b>TOTAL</b>	<b>817.1</b>	<b>8795.1</b>

**AS PROPOSED**

LEVEL	GIFA	
	M2	SQFT
GROUND FLOOR	231.4	2490.8
FIRST FLOOR	188.4	2027.9
SECOND FLOOR	212.9	2291.6
THIRD FLOOR	146.5	1576.9
FOURTH FLOOR	37.2	400.4
<b>TOTAL</b>	<b>816.4</b>	<b>8787.6</b>

	GIFA			GIFA	
	M2	SQFT		M2	SQFT
DUPLEX APARTMENT 01	134.4	1446.7	HOTEL BEDROOM 07	18.2	195.9
TRIPLEX APARTMENT 02	87.5	941.8	HOTEL BEDROOM 08	17.9	192.6
HOTEL BEDROOM 01	13.8	148.5	HOTEL BEDROOM 09	18.3	196.9
HOTEL BEDROOM 02	14.9	160.4			
HOTEL BEDROOM 03	17.6	189.4			
HOTEL BEDROOM 04	16.7	179.7			
HOTEL BEDROOM 05	17.2	185.1			
HOTEL BEDROOM 06	17.3	186.2			

revision	date	description
01	NOR.2023	Planning Application

**STATUS:**  
PLANNING  
**CLIENT:**  
CRC / OPENHOME  
**PROJECT TITLE:**  
22 BRIDGE STREET  
**DRAWING TITLE:**  
PROPOSED THIRD FLOOR PLAN

JOB NO: 051    DWG No: SK15    DRN: TS  
SCALE: 1:100 @ A5    DATE: AUG 25    REV: 01

©MONIKA STUDIO This design and drawing is the copyright of MS and may not be reproduced in any form whatsoever without prior written consent. Issue of the drawing does not impart any real or implied copyright license. This drawing must be read in conjunction with all architects, consultants, subcontractors and specialist drawings. Do not scale from this drawing.