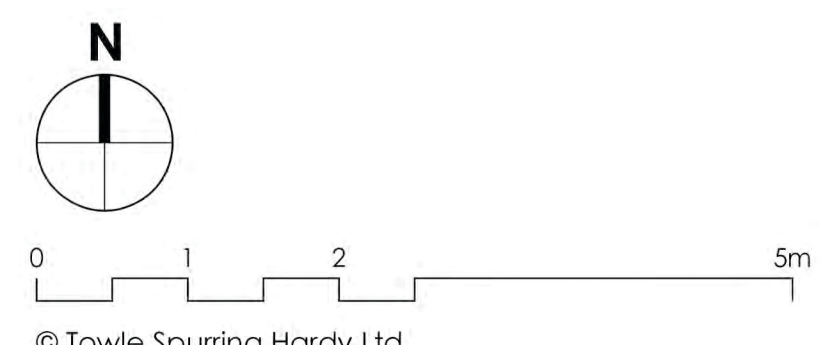
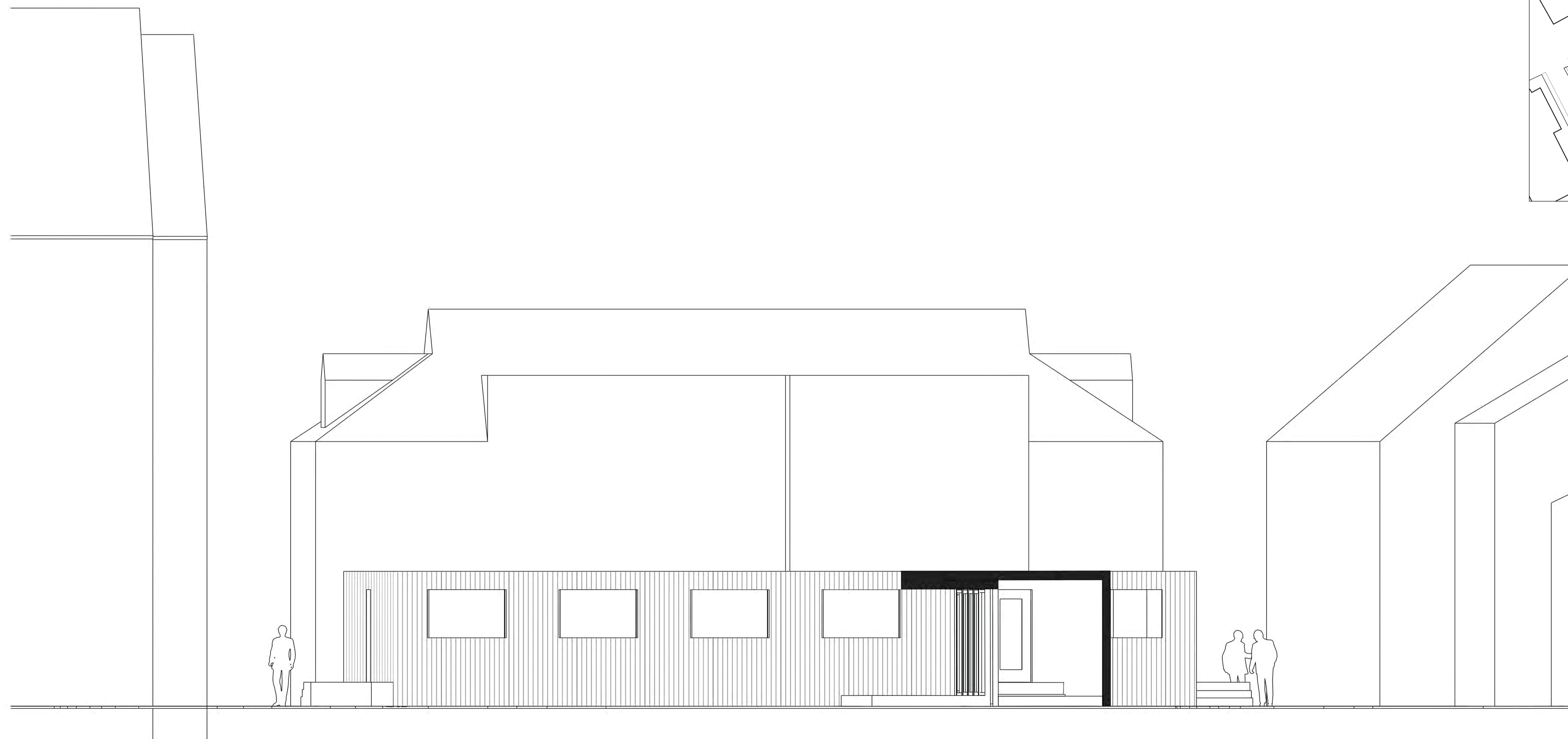


Do not scale dimensions from this drawing

The survey information shown on this drawing is based on a survey prepared by a third party and TSH Architects accept no responsibility for the accuracy or completeness of the survey

These drawings have been amended to attain Record drawing status based on information received from the Main Contractor.

Note: Detailed design information for Various components / constructions are indicated on separate specialist sub-contractor drawings, & may supersede the information shown on this drawing.



Tel: 01865 861281
tsharchitects.co.uk

Rev	Date	Description
		St Edwards School Date: 23/06/26
		Temporary Classrooms Scale: 1:50@A1
		East Elevation Status: Planning
		Drawn: TD
		2023009 - A - 05 - 004 Revision: /