

**Heating Legend:**  
 Indicates compact radiator position with TVR controls. Sizes are shown indicative only & are subject to heating specialist's design & heat loss calculations.  
 Indicates Heated Towel Rail.

**Appliance Legend:**  
 WM Built-in washing machine.  
 FF Built-in fridge freezer.  
 HO 4 zone electric hob.  
 DW Built-in dishwasher.  
 TD Built-in tumble dryer.  
 DO Built in double oven.  
 LU Tall larder unit.

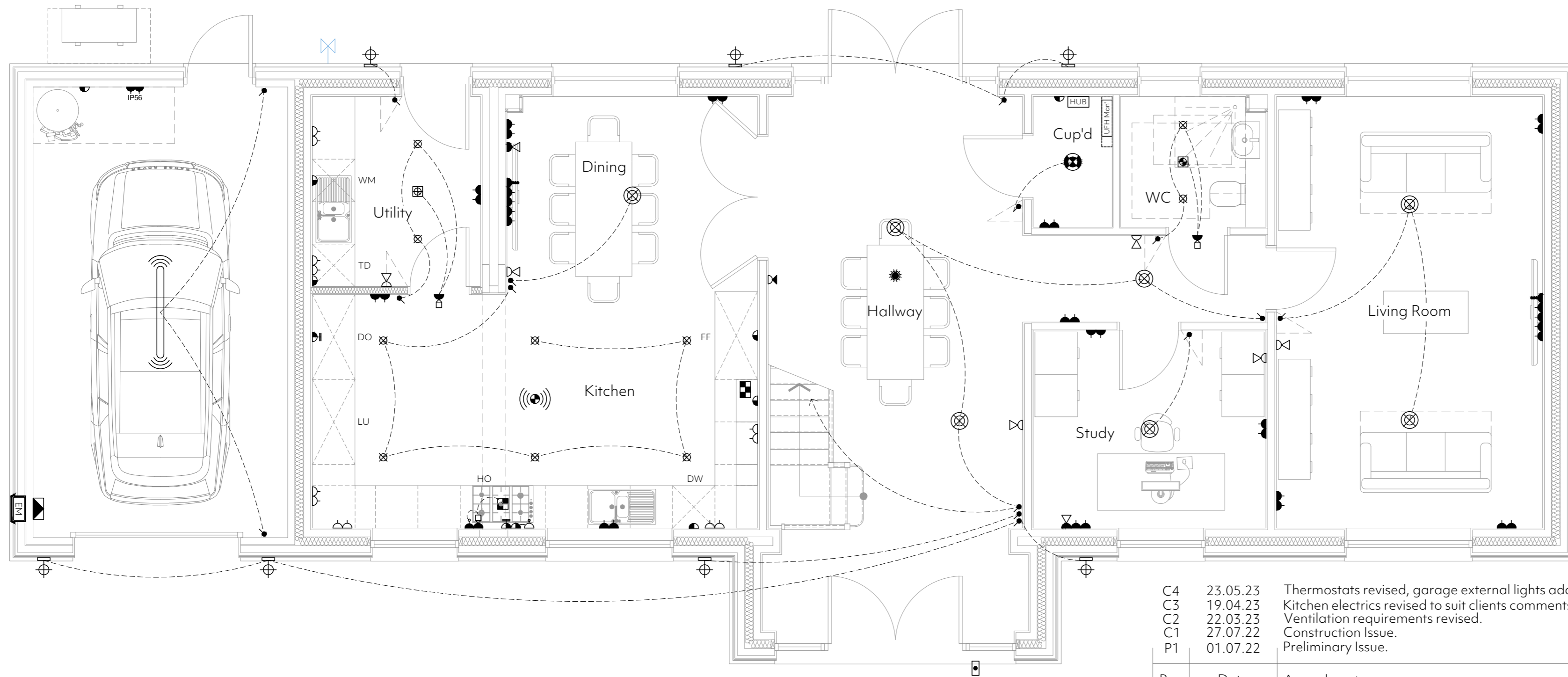
**General Electrical Notes:**

- Any service control needed to be operated or read on a frequent basis, or in an emergency, should be included within the height band of 450-1200mm from finished floor level, please refer to Approved Document M4(2) of the building regulations.
- Refer to Avairy developments specification for details of all physical fittings.
- Switches for permanently wired appliances are located between 450mm and 1200mm above the floor, unless needed at a higher level for particular appliances.
- The consumer control unit is to be mounted so that the switches are between 1350mm & 1450mm above FFL.
- Switches, sockets, stopcocks and controls are to have their centre line between 450mm & 1200mm above FFL and a minimum of 300mm (measured horizontally) from an inside corner.
- Boiler timer controls & thermostats are to be mounted between 900mm & 1200mm above finished floor level.
- Installation is to be carried out in accordance with the current IEE Regulations, the electricity supply regulations, and CIBSE guides and to the approval of the electricity board.
- Please refer to the construction specification for further details.
- All lighting to be low energy.
- Ventilation shown indicative only. Refer to specialists design.
- This drawing is to be read in conjunction with the Avairy developments Finishes Specification.

**Electrical Legend:**

- Light switch (to be multi-gang where shown in multiples)
- Two/Three way light switch
- Door bell sounder
- Door bell
- Hager Design 30 Lockable consumer unit mounted so that the controls are between 1350-1450mm from FFL
- Power supply for kitchen cooker hood extract
- Heat detector
- Switched fused spur
- Mains powered smoke detector (optical only) with battery back up
- Triple pole switch
- BT socket
- Low level TV outlet.
- Low level TV outlet with 1no. RJ54 port.
- Double switched socket at low level
- Low energy pendant
- LED tube light fitting
- Thermostat
- Wall mounted external light fitting to have separate PIR sensor
- Indicates indicative electricity recessed meter location
- Comprises of Optical network termination unit, 1no. Double socket, 4no. RJ54 port.
- Cooker outlet
- Double switched socket positioned above work top level
- Kitchen control panel to comprise of 20a grid switches for integrated appliances and switch for extract fan override
- Low voltage warm white led down lights
- IP67 low voltage warm white led down lights
- Indicative route of electric cabling
- 45amp double pole switch for ovens
- dMEV ceiling mounted utility extract fan with minimum high rate of 30L/s
- dMEV ceiling mounted W/C extract fan with minimum high rate of 6L/s
- dMEV ceiling mounted bathroom extract fan with minimum high rate of 15L/s
- Cooker hood extract fan with minimum high rate if 30L/s
- Indicates white shaver socket.
- Indicates indicative location of Union Bib Tap in.
- Indicates external mounted box to house treatment plant control panel to be fed from CCU.

**Important Note:**  
 All electrical items shown upon this drawing are for indication & pricing purposes only and are to be verified by a competent & suitably qualified electrical contractor. All BT points (Voice & Data) to be wired back to master BT point situated at the HUB.



C4	23.05.23	Thermostats revised, garage external lights added, garage internal light revised.
C3	19.04.23	Kitchen electrics revised to suit clients comments.
C2	22.03.23	Ventilation requirements revised.
C1	27.07.22	Construction Issue.
P1	01.07.22	Preliminary Issue.

Rev	Date	Amendment
-----	------	-----------

## Ground Floor Electrical Plan

Plot 02

Scale 1:50

<b>Client:</b> Avairy Developments		
<b>Project:</b> Priors Hall Farm, Linsell		
<b>Drawing:</b> Ground Floor Electrical Layout Plot 02	hello@projectarch.co.uk	+44 (0) 1371 829095
<b>Date:</b> March 2022	<b>Scale:</b> 1:50 @ A2	<b>Dwg No:</b> 21-1032-129
<b>Status:</b> Construction Issue		<b>C4</b>

© This drawing is the copyright of project.architecture ltd. It shall not be in any way used or reproduced without their prior written consent. All dimensions are to be checked on site or in the workshop prior to commencing any work. do not scale from this drawing. Work only to figured dimensions. Any perceived discrepancies are to be reported to the architect at the earliest opportunity.