

Current Windows and Doors - 3 Haywood Drive, Portsoy, AB45 2QF

The property is a 1970's bungalow. The materials of the current doors and windows are a mixture of UPVC and timber. It is proposed to replace all doors and windows and trims with upvc with a grey anthracite coloured finish and white finish on the interior. This is in line with other neighbouring properties who have installed replacement windows in upvc. Please see the corresponding additional information in the Eurocell quotation for full sizes and specification of each window and door frame.

Front of the house:



Frame 5
currently
timber

Frame 6
currently
timber

Frame 11
currently
timber

Frame 7
currently
upvc

Frame 16
currently
upvc

Frame 17
currently
upvc

Frame 18
currently
upvc

Front Lounge



Frame 8
currently
timber

Frame 10
currently
timber

Frame 9
currently
timber



Frame 7
currently
upvc

Frame 16
currently
upvc

Frame 17
currently
upvc

Frame 18
currently
upvc

Rear of the house:

Frame 1 – currently timber

Frame 13 – currently timber

N ←



Frame 2 – currently timber

Frame 12 – currently timber

Frame 3 – currently timber



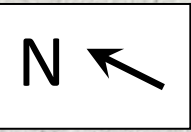
Frames 14
and 15 –
currently
timber

Frame 4 –
currently
timber

Frame 2 – currently timber

Frame 12 – currently timber

Frame 3 – currently timber

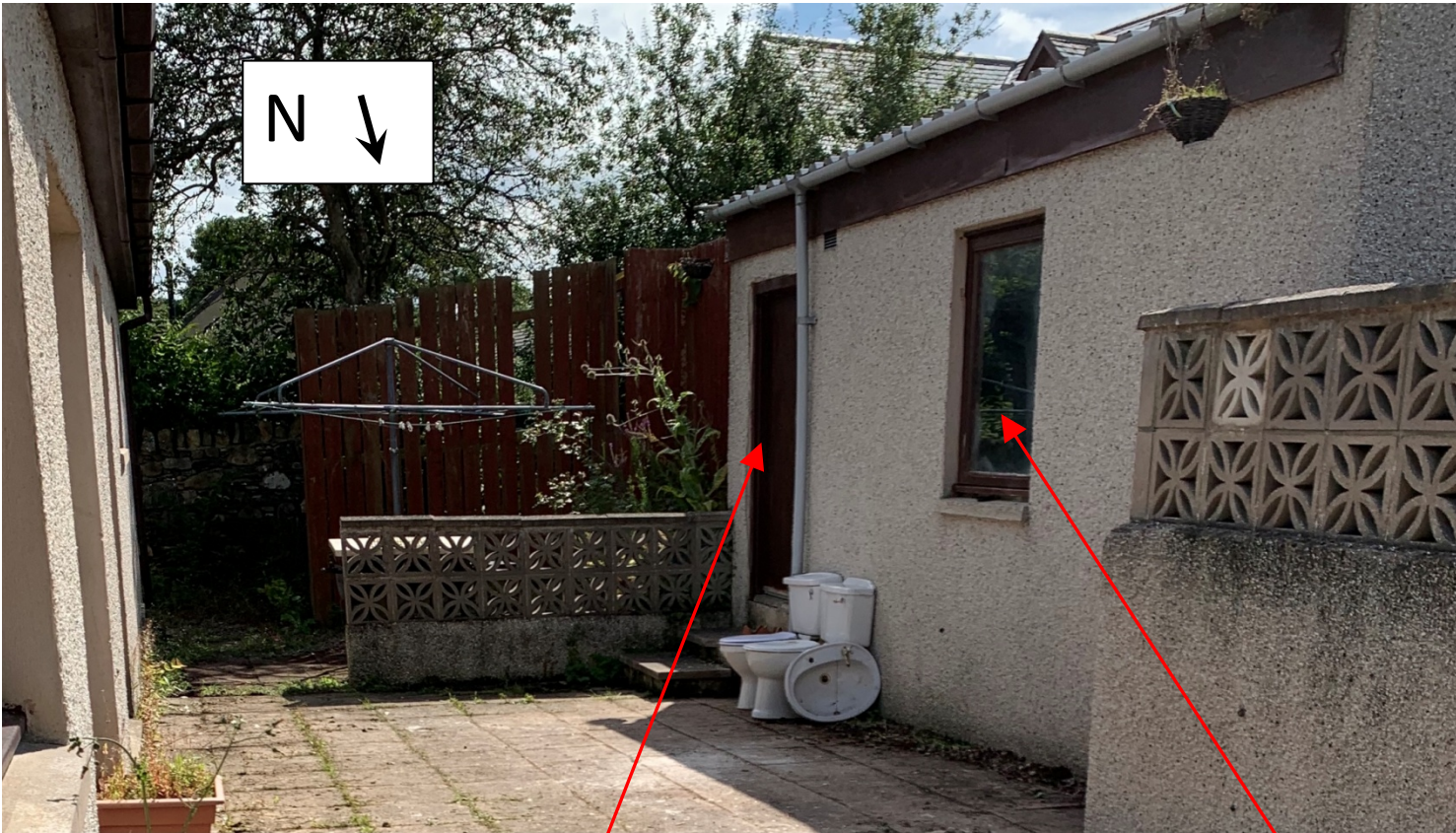




Frames 14
and 15 –
currently
timber

Frame 4 –
currently
timber

Frame 3 – currently timber



Frame 20 – currently timber

Frame 19 – currently timber