

\_Drawing Title  
**Site Plan Proposed**

\_Project  
**44A Percy Gardens**

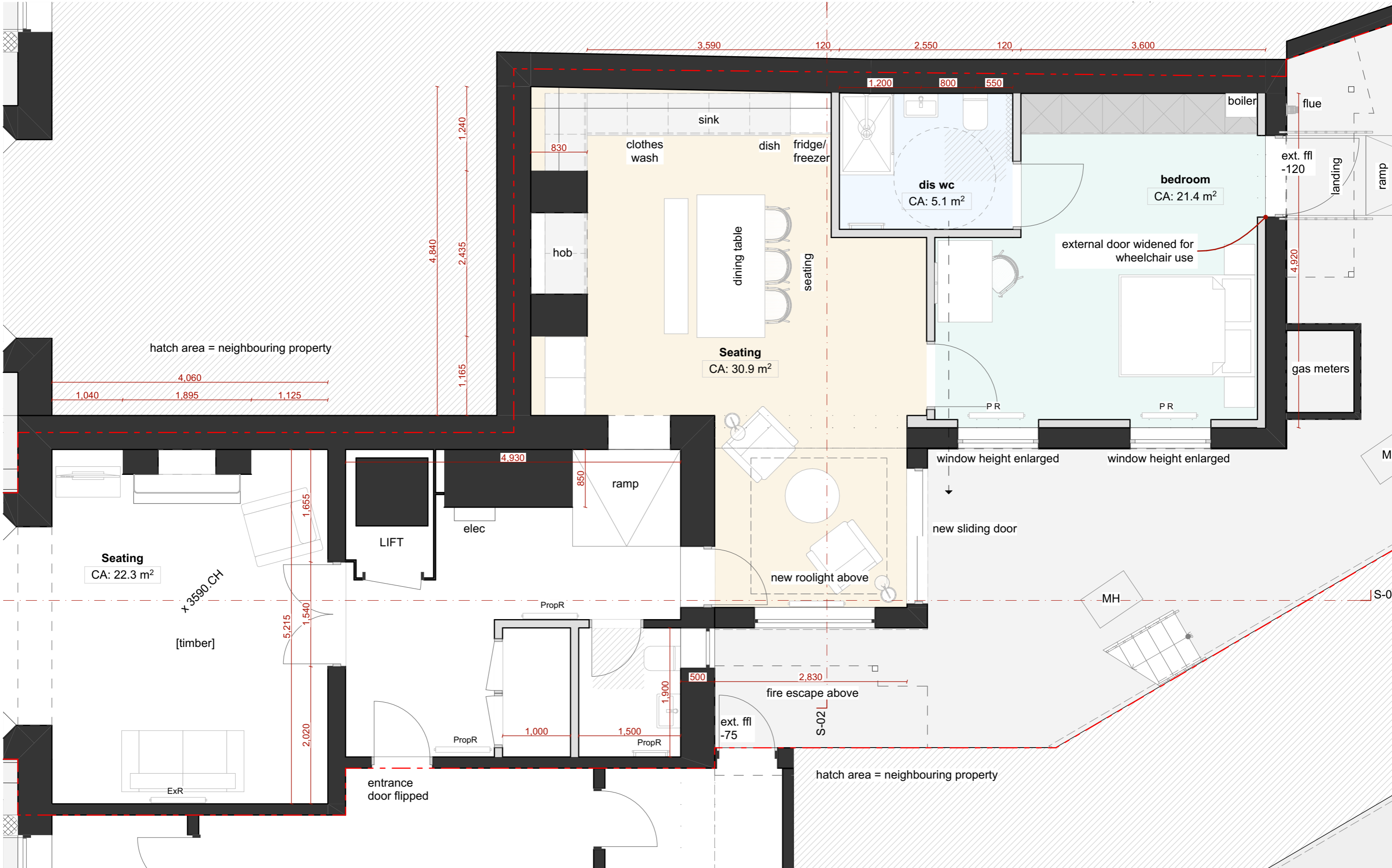
\_Project Number  
**23F\_087**  
 \_Drawing Number  
**PER-FED-A-4.1.01**  
 \_Scale (A3)  
**1:100**  
 \_Status  
**PLANNING**

REV	NOTES	DATE	DRWN	CHKD
P01	First Issue	30.10.23	PJL	

**Residual Risks**  
 It is assumed that all works on this drawing will be carried out by a competent contractor working to an appropriate method statement. Additional efforts will be made by Feda Architects Ltd to highlight hazard and risks associated with the works detailed on this drawing.

**Drawing Notes**  
 \_This drawing is subject to Copyright, Designs and Patent Act 1988. It is an infringement of copyright to reproduce this drawing by whatever means, without written consent from Feda Architects Ltd.  
 \_Drawings are not to be scaled. All dimensions are to be checked on site.  
 \_All errors to be reported to Feda Architects Ltd.

**FEDA ARCHITECTS**  
 A: 38 Eskdale Terrace, Cullercoats, Newcastle. NE30 4PX  
 E: info@fedaarchitects.co.uk  
 W: https://www.fedaarchitects.co.uk



\_Drawing Title  
**Proposed Ground Floor**

\_Project  
**44A Percy Gardens**

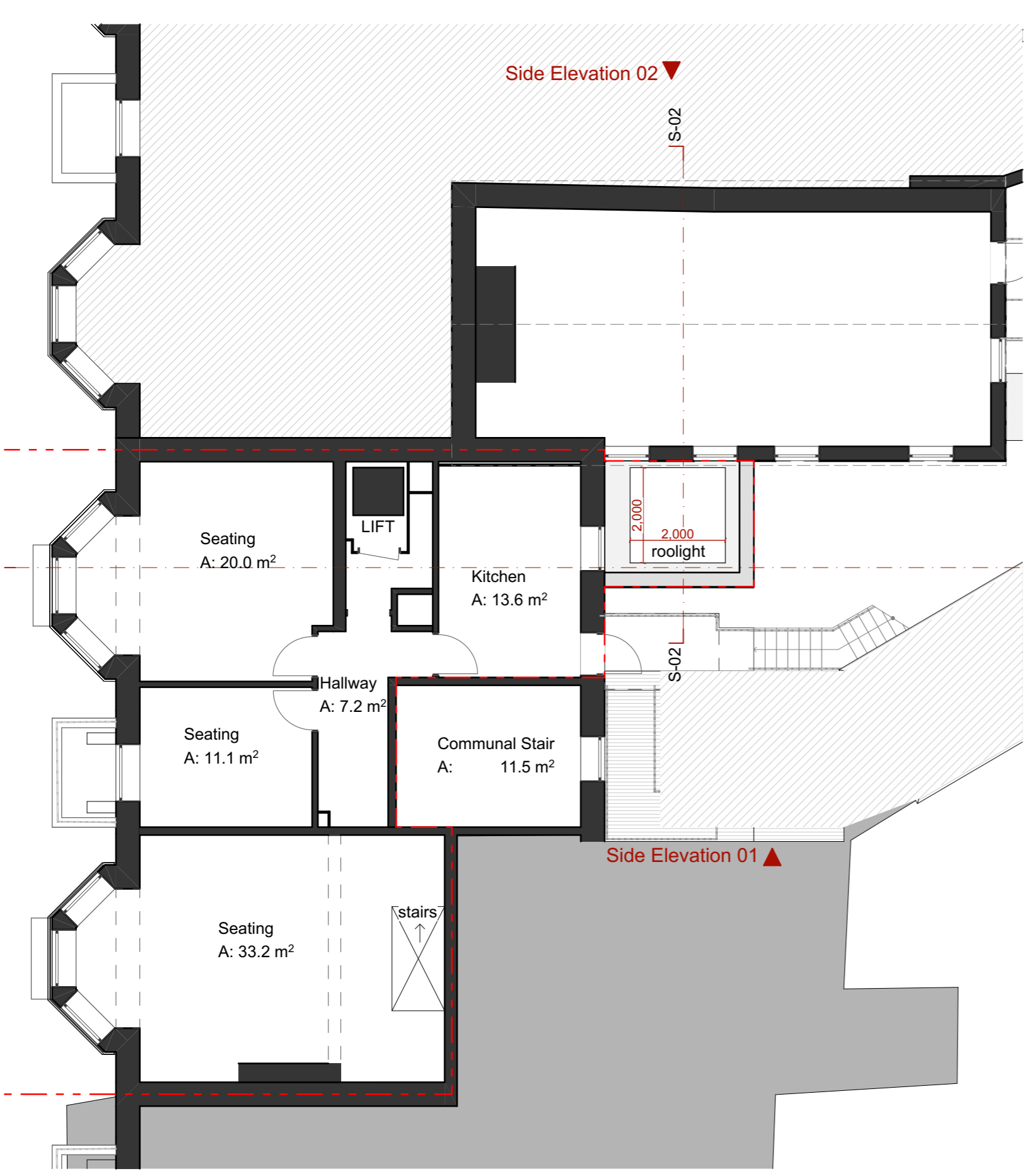
\_Project Number  
**23F\_087**  
 \_Drawing Number  
**PER-FED-A-4.2.01**  
 \_Scale [A3]  
**1:50**  
 \_Status  
**PLANNING**

REV	NOTES	DATE	DRWN	CHKD
P01	First Issue	30.10.23	PJL	

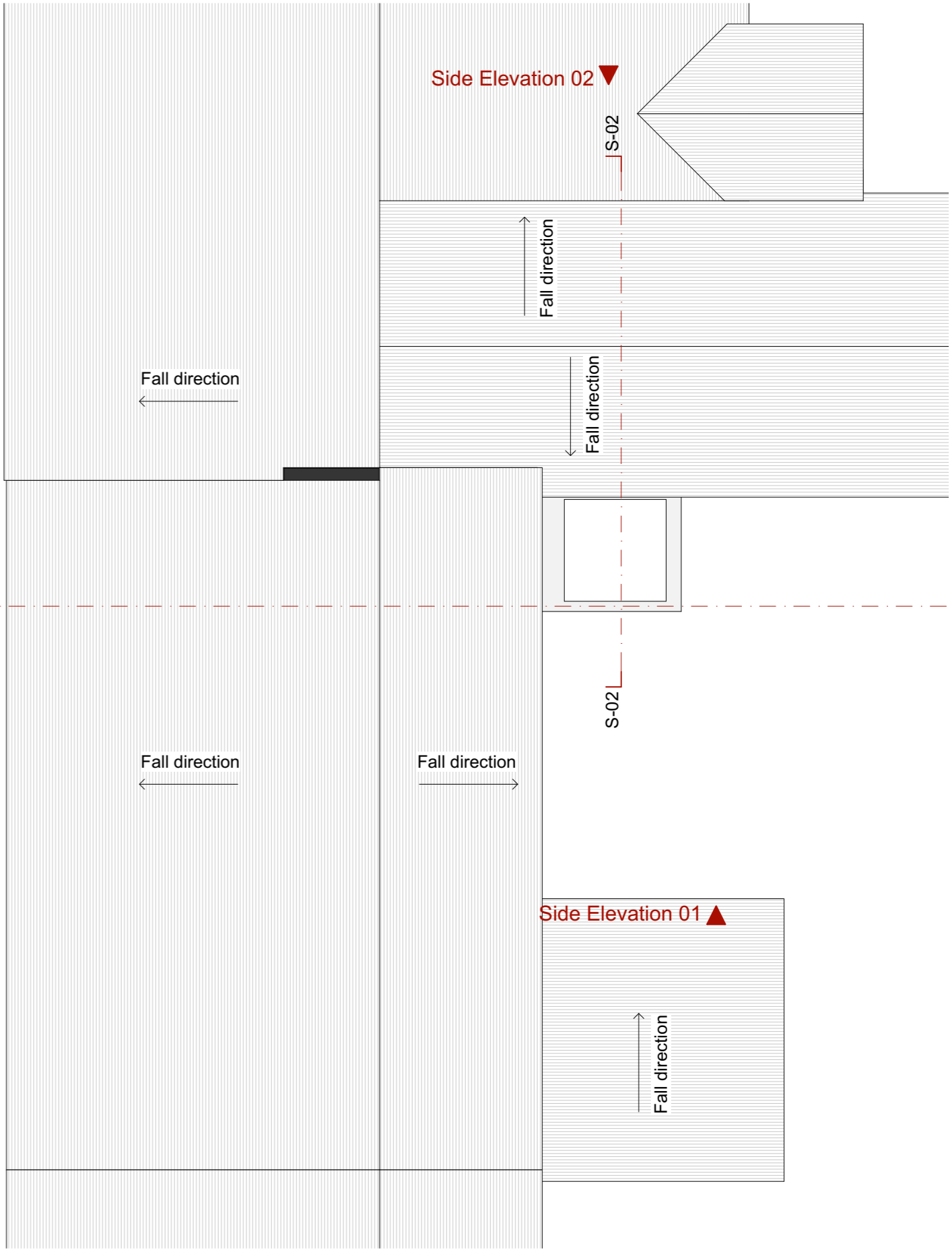
**Residual Risks**  
 It is assumed that all works on this drawing will be carried out by a competent contractor working to an appropriate method statement. Additional efforts will be made by Feda Architects Ltd to highlight hazard and risks associated with the works detailed on this drawing.

**Drawing Notes**  
 This drawing is subject to Copyright, Designs and Patent Act 1988. It is an infringement of copyright to reproduce this drawing by whatever means, without written consent from Feda Architects Ltd.  
 Drawings are not to be scaled. All dimensions are to be checked on site.  
 All errors to be reported to Feda Architects Ltd.

**FEDA ARCHITECTS**  
 A: 38 Eskdale Terrace, Cullercoats, Newcastle, NE30 4PX  
 E: info@fedaarchitects.co.uk  
 W: https://www.fedaarchitects.co.uk



01-First Floor  
1:100



RF-Roof  
1:100

**Proposed First Floor and Roof Plan**

**Project**  
44A Percy Gardens

**Project Number**  
23F\_087  
**Drawing Number**  
PER-FED-A-4.2.02  
**Scale [A3]**  
1:100  
**Status**  
PLANNING

REV	NOTES	DATE	DRWN	CHKD
P01	First Issue	30.10.23	PJL	

**Residual Risks**  
It is assumed that all works on this drawing will be carried out by a competent contractor working to an appropriate method statement. Additional efforts will be made by Feda Architects Ltd to highlight hazard and risks associated with the works detailed on this drawing.

**Drawing Notes**  
\_This drawing is subject to Copyright, Designs and Patent Act 1988. It is an infringement of copyright to reproduce this drawing by whatever means, without written consent from Feda Architects Ltd.  
\_Drawings are not to be scaled. All dimensions are to be checked on site.  
\_All errors to be reported to Feda Architects Ltd.

**FEDA ARCHITECTS**  
A: 38 Eskdale Terrace, Cullercoats, Newcastle, NE30 4PX  
E: info@fedaarchitects.co.uk  
W: https://www.fedaarchitects.co.uk



Principal Elevation  
1:100



Rear Elevation  
1:100

\_Drawing Title  
**Proposed Principal and Rear Elevation**

\_Project  
**44A Percy Gardens**

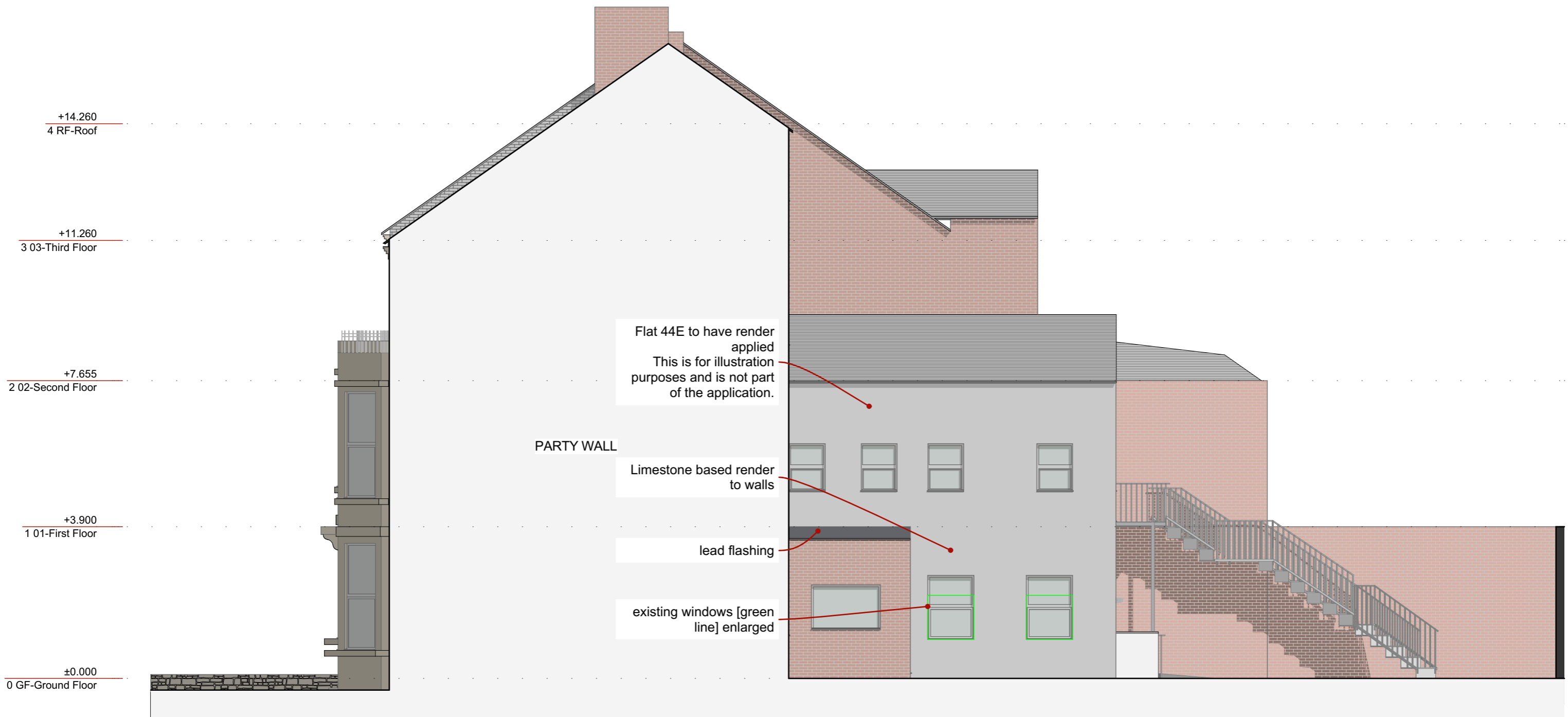
\_Project Number  
**23F\_087**  
\_Drawing Number  
**PER-FED-A-4.3.01**  
\_Scale (A3)  
**1:100**  
\_Status  
**PLANNING**

REV	NOTES	DATE	DRWN	CHKD
P01	First Issue	30.10.23	PJL	

**Residual Risks**  
It is assumed that all works on this drawing will be carried out by a competent contractor working to an appropriate method statement. Additional efforts will be made by Fedas Architects Ltd to highlight hazard and risks associated with the works detailed on this drawing.

**Drawing Notes**  
\_This drawing is subject to Copyright, Designs and Patent Act 1988. It is an infringement of copyright to reproduce this drawing by whatever means, without written consent from Fedas Architects Ltd.  
\_Drawings are not to be scaled. All dimensions are to be checked on site.  
\_All errors to be reported to Fedas Architects Ltd.

**FEDA ARCHITECTS**  
A: 38 Eskdale Terrace, Cullercoats, Newcastle, NE30 4PX  
E: info@fedasarchitects.co.uk  
W: https://www.fedasarchitects.co.uk



Side Elevation 01  
1:100

**Existing Side Elevation 01**

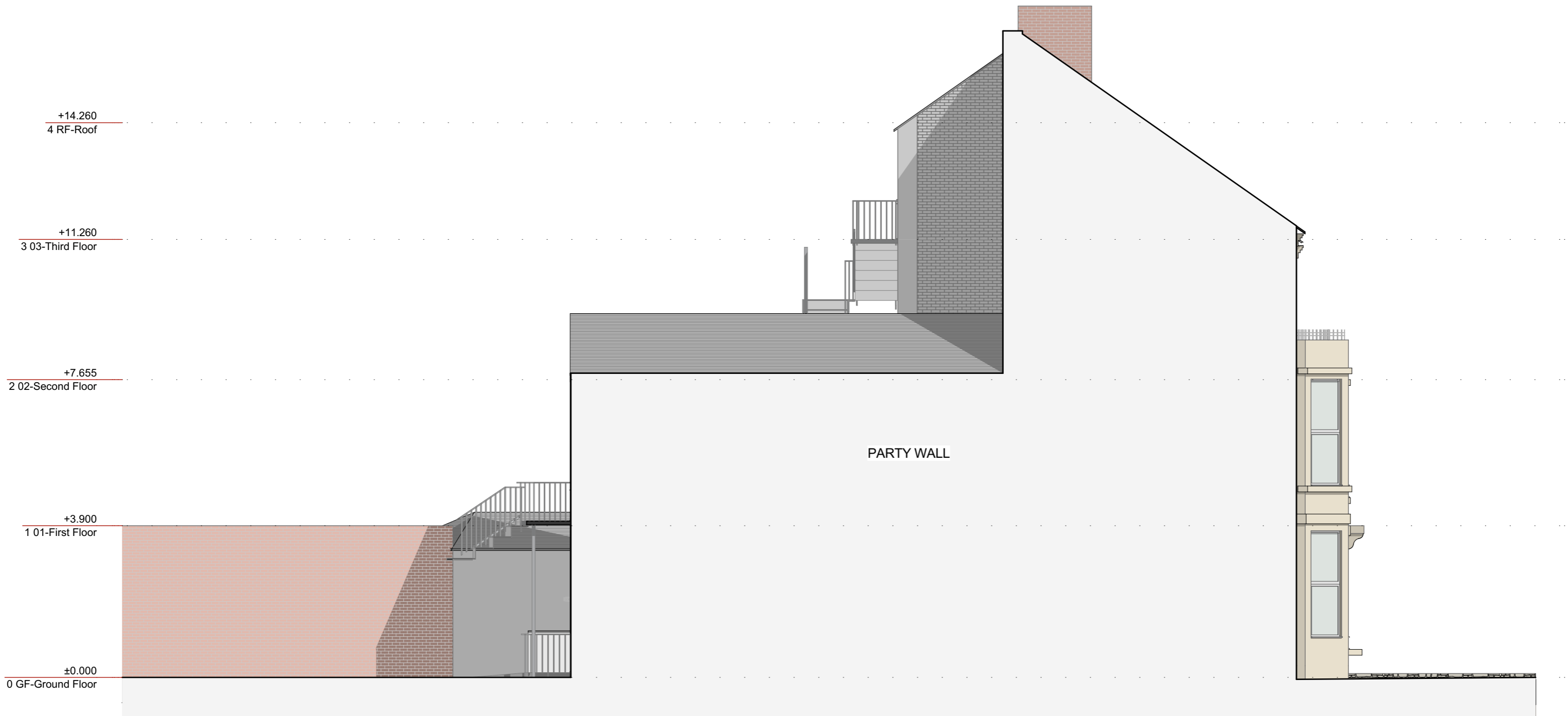
**Project**  
44A Percy Gardens

**Project Number**  
23F\_087  
**Drawing Number**  
PER-FED-A-4.3.02  
**Scale [A3]**  
1:100  
**Status**  
PLANNING

REV	NOTES	DATE	DRWN	CHKD
P01	First Issue	30.10.23	PJL	

**Residual Risks**  
It is assumed that all works on this drawing will be carried out by a competent contractor working to an appropriate method statement. Additional efforts will be made by Feda Architects Ltd to highlight hazard and risks associated with the works detailed on this drawing.  
**Drawing Notes**  
\_This drawing is subject to Copyright, Designs and Patent Act 1988. It is an infringement of copyright to reproduce this drawing by whatever means, without written consent from Feda Architects Ltd.  
\_Drawings are not to be scaled. All dimensions are to be checked on site.  
\_All errors to be reported to Feda Architects Ltd.

**FEDA ARCHITECTS**  
A: 38 Eskdale Terrace, Cullercoats, Newcastle, NE30 4PX  
E: info@fedaarchitects.co.uk  
W: https://www.fedaarchitects.co.uk



Side Elevation 02  
1:100

\_Drawing Title  
**Existing Side Elevation 02**

\_Project  
**44A Percy Gardens**

\_Project Number  
**23F\_087**  
\_Drawing Number  
**PER-FED-A-4.3.03**  
\_Scale (A3)  
**1:100**  
\_Status  
**PLANNING**

REV	NOTES	DATE	DRWN	CHKD
P01	First Issue	30.10.23	PJL	

**Residual Risks**  
It is assumed that all works on this drawing will be carried out by a competent contractor working to an appropriate method statement. Additional efforts will be made by Feda Architects Ltd to highlight hazard and risks associated with the works detailed on this drawing.

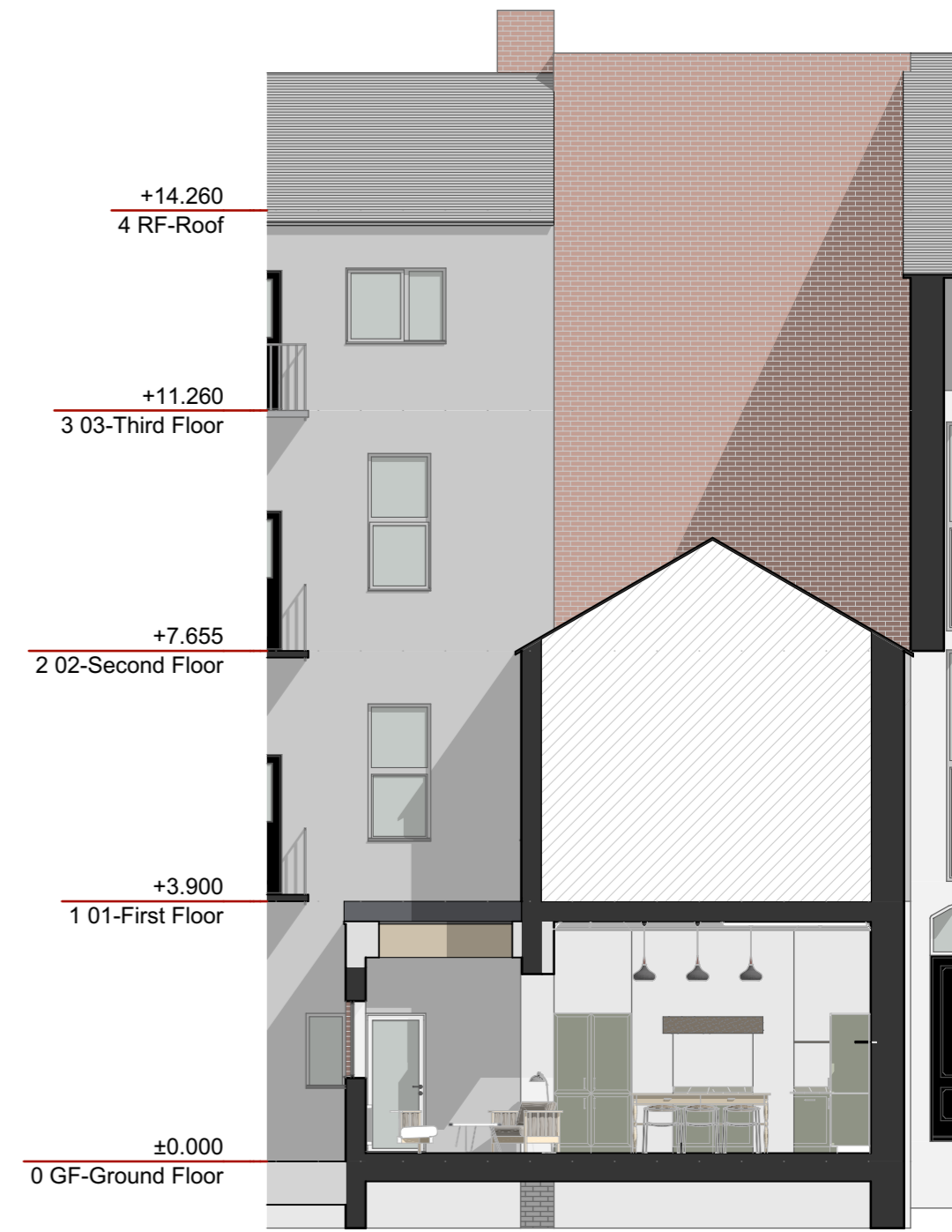
**Drawing Notes**  
\_This drawing is subject to Copyright, Designs and Patent Act 1988. It is an infringement of copyright to reproduce this drawing by whatever means, without written consent from Feda Architects Ltd.  
\_Drawings are not to be scaled. All dimensions are to be checked on site.  
\_All errors to be reported to Feda Architects Ltd.

**FEDA**  
**ARCHITECTS**

A: 38 Eskdale Terrace, Cullercoats, Newcastle, NE30 4PX  
E: info@fedaarchitects.co.uk  
W: https://www.fedaarchitects.co.uk



Building Section  
1:100



Building Section  
1:100

\_Drawing Title  
**Proposed S-01 and S-02**

\_Project  
**44A Percy Gardens**

\_Project Number  
**23F\_087**  
\_Drawing Number  
**PER-FED-A-4.4.25**  
\_Scale (A3)  
**1:100**  
\_Status  
**PLANNING**

REV	NOTES	DATE	DRWN	CHKD
P01	First Issue	30.10.23	PJL	

**Residual Risks**  
It is assumed that all works on this drawing will be carried out by a competent contractor working to an appropriate method statement. Additional efforts will be made by Feda Architects Ltd to highlight hazard and risks associated with the works detailed on this drawing.

**Drawing Notes**  
\_This drawing is subject to Copyright, Designs and Patent Act 1988. It is an infringement of copyright to reproduce this drawing by whatever means, without written consent from Feda Architects Ltd.  
\_Drawings are not to be scaled. All dimensions are to be checked on site.  
\_All errors to be reported to Feda Architects Ltd.

**FEDA**  
**ARCHITECTS**  
A: 38 Eskdale Terrace, Cullercoats, Newcastle, NE30 4PX  
E: info@fedaarchitects.co.uk  
W: https://www.fedaarchitects.co.uk