

Existing Site Plan

Project
44A Percy Gardens

Project Number
23F_087

Drawing Number
PER-FED-A-2.1.01

Scale (A3)
1:100

Status
PLANNING

Key:
 to be demolished

REV	NOTES	DATE	DRWN	CHKD
P01	First Issue	30.10.23	PJL	

Residual Risks
 It is assumed that all works on this drawing will be carried out by a competent contractor working to an appropriate method statement. Additional efforts will be made by Feda Architects Ltd to highlight hazard and risks associated with the works detailed on this drawing.

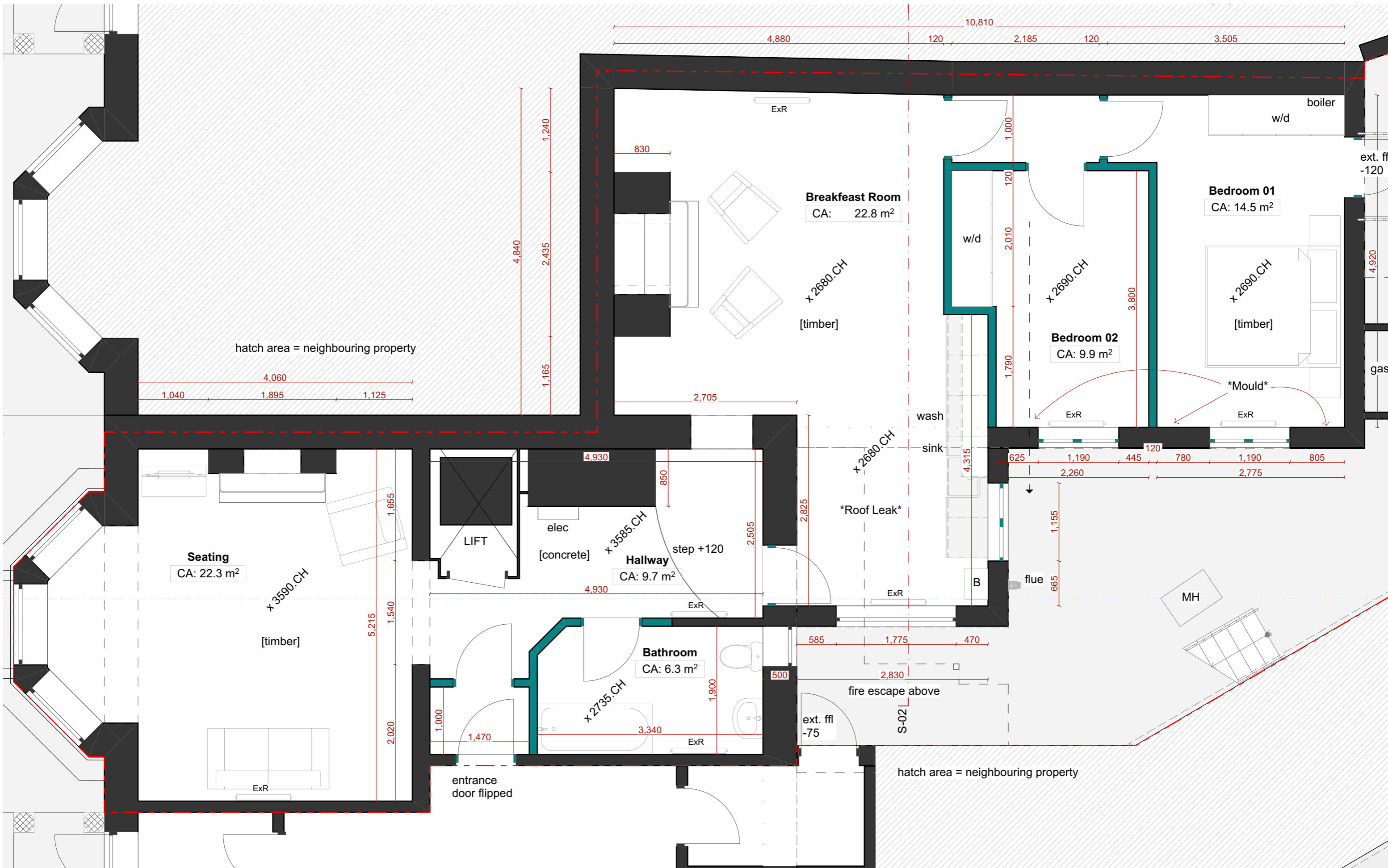
Drawing Notes
 This drawing is subject to Copyright, Designs and Patent Act 1988. It is an infringement of copyright to reproduce this drawing by whatever means, without written consent from Feda Architects Ltd.

Drawings are not to be scaled. All dimensions are to be checked on site.

All errors to be reported to Feda Architects Ltd.

FEDA ARCHITECTS

A: 38 Eskdale Terrace, Cullercoats, Newcastle, NE30 4PX
 E: info@fedaarchitects.co.uk
 W: https://www.fedaarchitects.co.uk



_Drawing Title
Existing Ground Floor

_Project
44A Percy Gardens

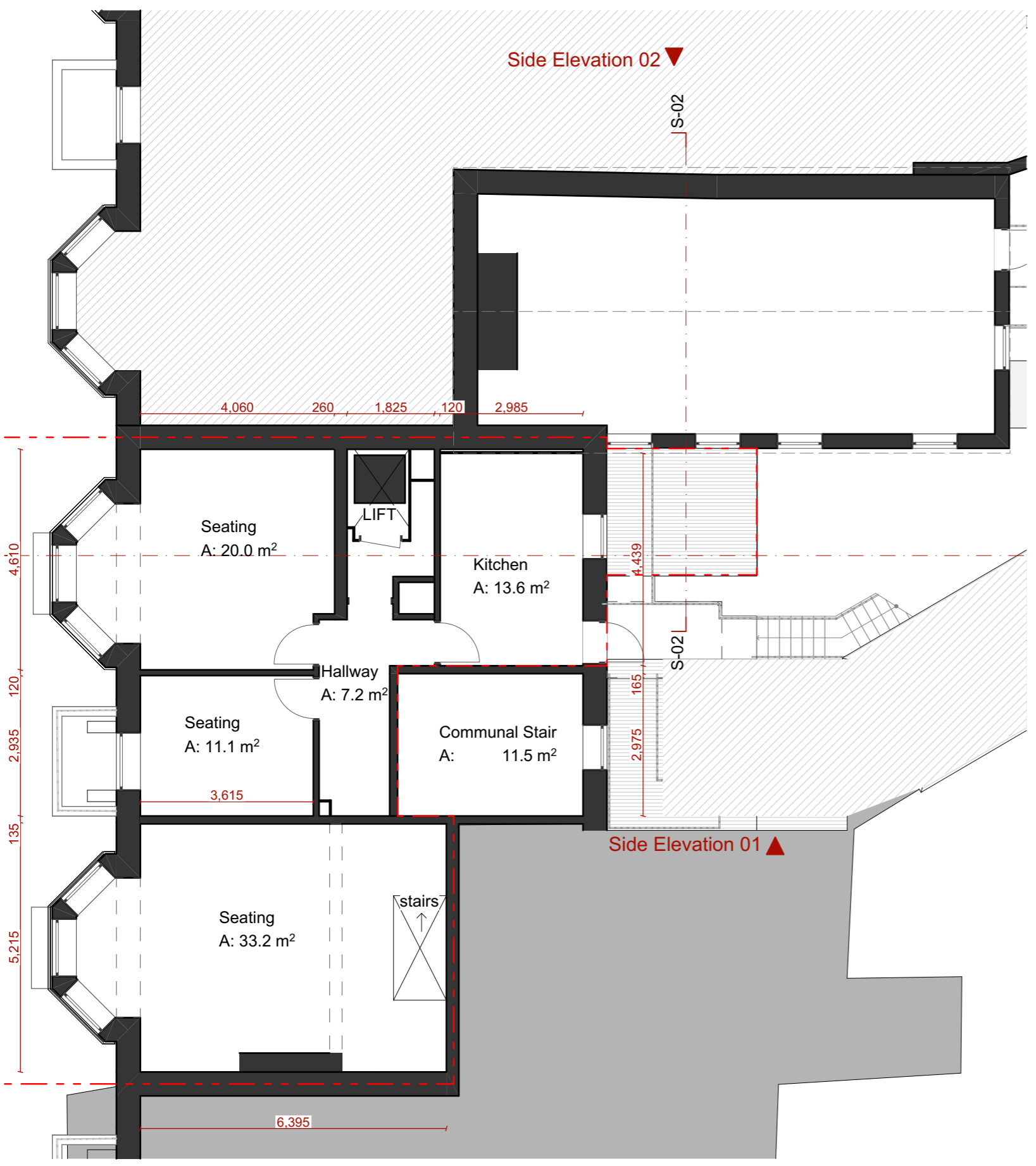
_Project Number
23F_087
 _Drawing Number
PER-FED-A-2.2.01
 _Scale [A3]
1:50
 _Status
PLANNING

Key:
 to be demolished

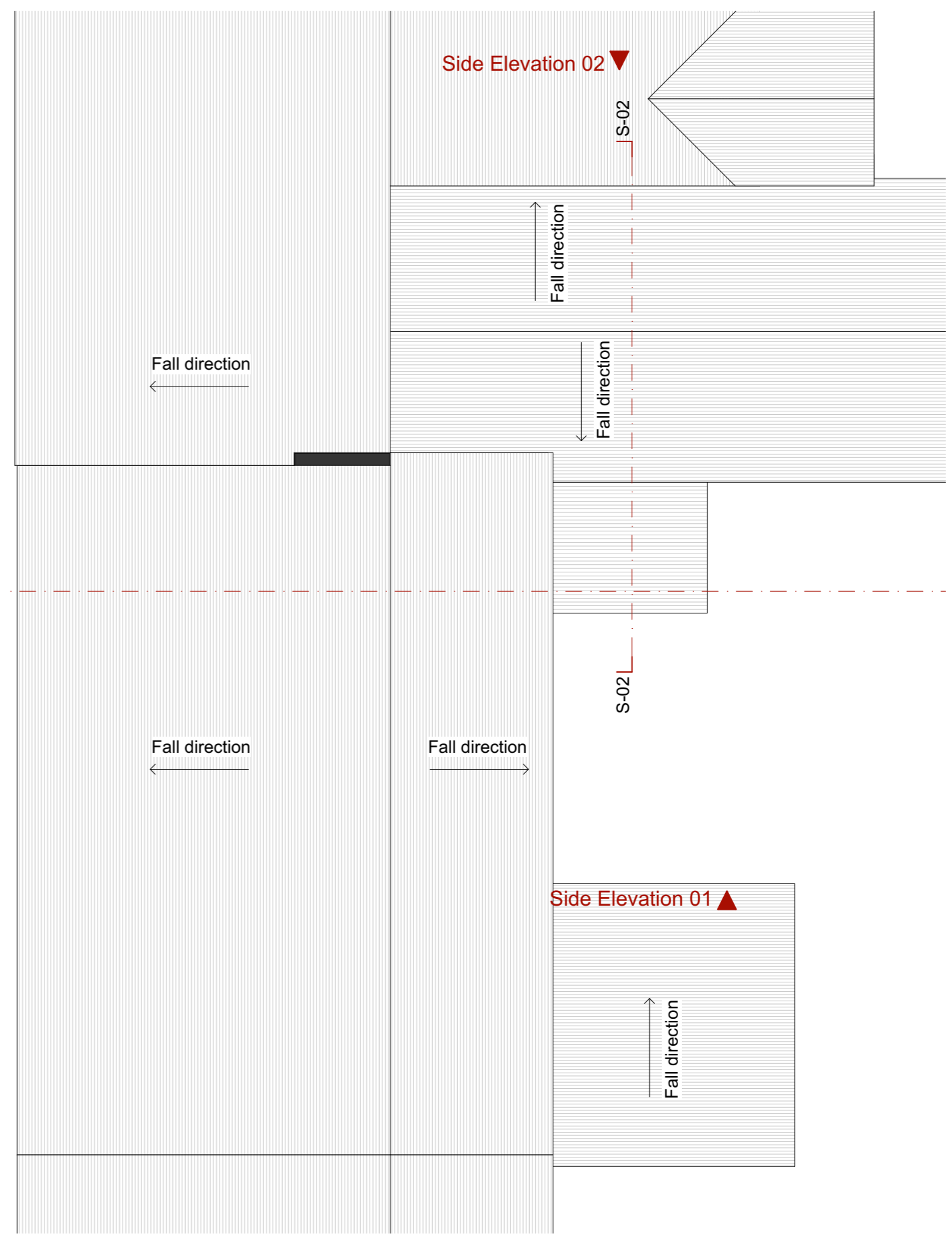
REV	NOTES	DATE	DRWN	CHKD
P01	First Issue	30.10.23	PJL	

Residual Risks
 It is assumed that all works on this drawing will be carried out by a competent contractor working to an appropriate method statement. Additional efforts will be made by Fedas Architects Ltd to highlight hazard and risks associated with the works detailed on this drawing.
Drawing Notes
 _This drawing is subject to Copyright, Designs and Patent Act 1988. It is an infringement of copyright to reproduce this drawing by whatever means, without written consent from Fedas Architects Ltd.
 _Drawings are not to be scaled. All dimensions are to be checked on site.
 _All errors to be reported to Fedas Architects Ltd.

FEDA ARCHITECTS
 A: 38 Eskdale Terrace, Cullercoats, Newcastle, NE30 4PX
 E: info@fedaarchitects.co.uk
 W: https://www.fedaarchitects.co.uk



01-First Floor
1:100



RF-Roof
1:100

_Drawing Title
Existing First Floor and Roof Plan

_Project
44A Percy Gardens

_Project Number
23F_087
_Drawing Number
PER-FED-A-2.2.02
_Scale [A3]
1:100
_Status
PLANNING

Key:
 to be demolished

REV	NOTES	DATE	DRWN	CHKD
P01	First Issue	30.10.23	PJL	

Residual Risks
 It is assumed that all works on this drawing will be carried out by a competent contractor working to an appropriate method statement. Additional efforts will be made by Feda Architects Ltd to highlight hazard and risks associated with the works detailed on this drawing.

Drawing Notes
 _This drawing is subject to Copyright, Designs and Patent Act 1988. It is an infringement of copyright to reproduce this drawing by whatever means, without written consent from Feda Architects Ltd.
 _Drawings are not to be scaled. All dimensions are to be checked on site.
 _All errors to be reported to Feda Architects Ltd.

FEDA ARCHITECTS
 A: 38 Eskdale Terrace, Cullercoats, Newcastle, NE30 4PX
 E: info@fedaarchitects.co.uk
 W: https://www.fedaarchitects.co.uk



Principal Elevation
1:100



Rear Elevation
1:100

_Drawing Title
Existing Principal and Rear Elevation

_Project
44A Percy Gardens

_Project Number
23F_087
_Drawing Number
PER-FED-A-2.3.01
_Scale (A3)
1:100
_Status
PLANNING

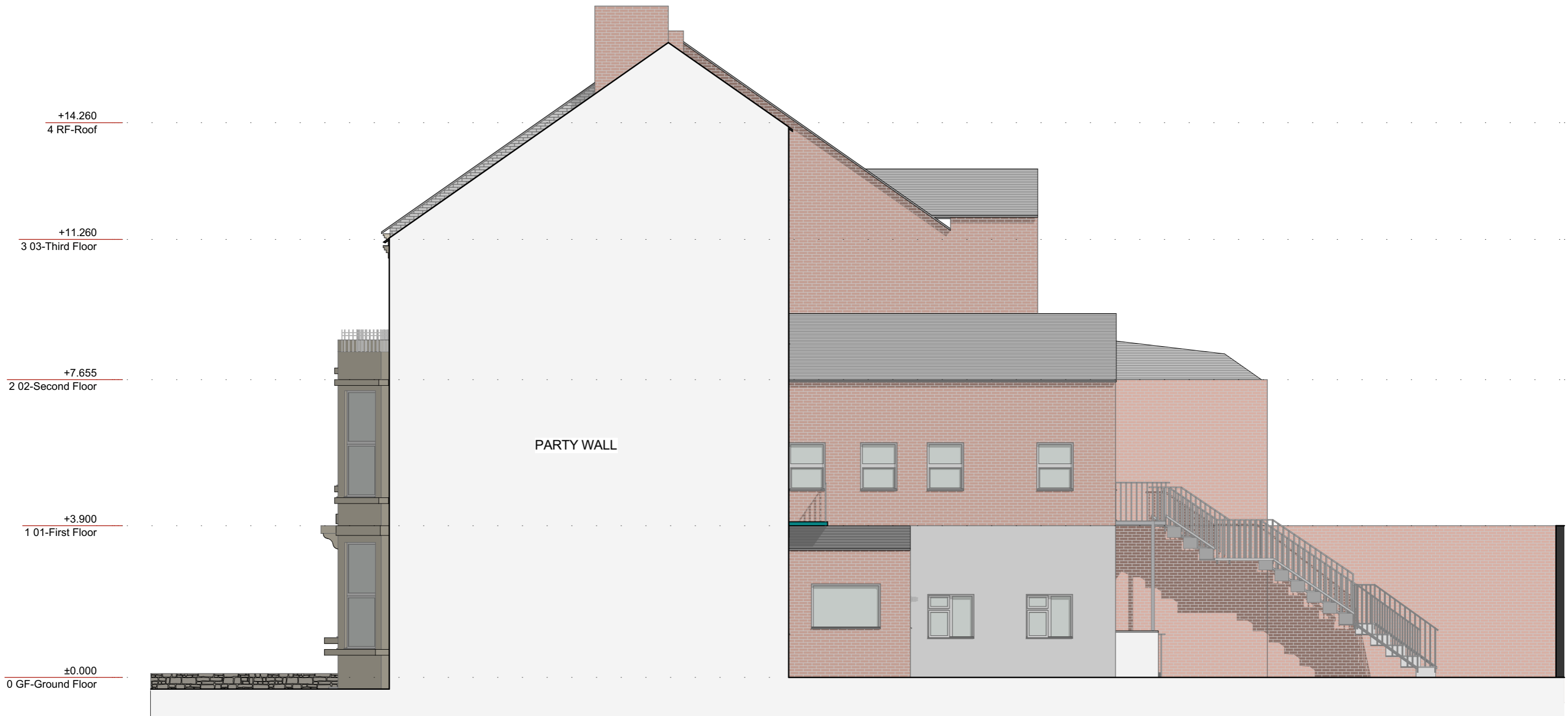
REV	NOTES	DATE	DRWN	CHKD
P01	First Issue	30.10.23	PJL	

Residual Risks
It is assumed that all works on this drawing will be carried out by a competent contractor working to an appropriate method statement. Additional efforts will be made by Feda Architects Ltd to highlight hazard and risks associated with the works detailed on this drawing.

Drawing Notes
_This drawing is subject to Copyright, Designs and Patent Act 1988. It is an infringement of copyright to reproduce this drawing by whatever means, without written consent from Feda Architects Ltd.
_Drawings are not to be scaled. All dimensions are to be checked on site.
_All errors to be reported to Feda Architects Ltd.

FEDA
ARCHITECTS

A: 38 Eskdale Terrace, Cullercoats, Newcastle, NE30 4PX
E: info@fedaarchitects.co.uk
W: https://www.fedaarchitects.co.uk



Side Elevation 01
1:100

_Drawing Title
Existing Side Elevation 01

_Project
44A Percy Gardens

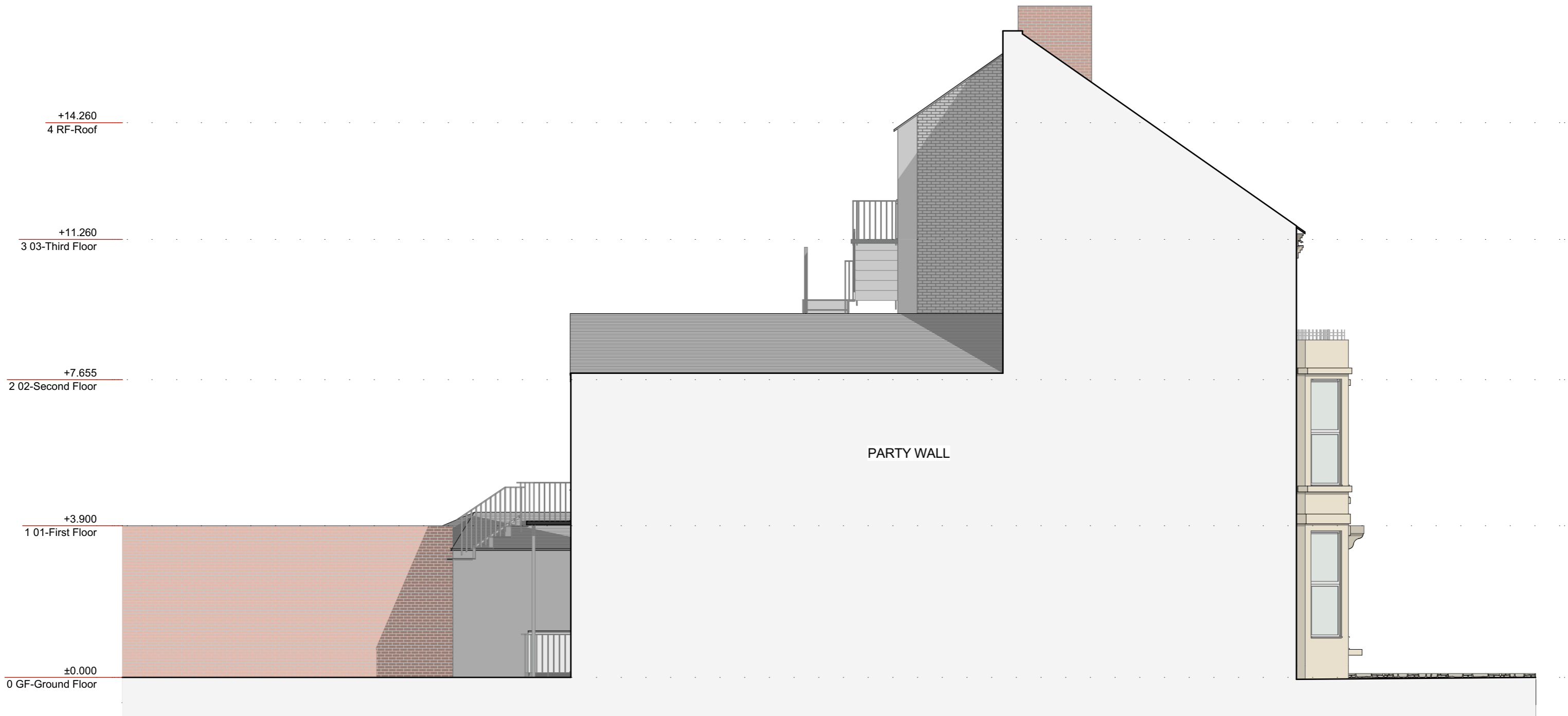
_Project Number
23F_087
_Drawing Number
PER-FED-A-2.3.02
_Scale (A3)
1:100
_Status
PLANNING

REV	NOTES	DATE	DRWN	CHKD
P01	First Issue	30.10.23	PJL	

Residual Risks
It is assumed that all works on this drawing will be carried out by a competent contractor working to an appropriate method statement. Additional efforts will be made by Feda Architects Ltd to highlight hazard and risks associated with the works detailed on this drawing.

Drawing Notes
_This drawing is subject to Copyright, Designs and Patent Act 1988. It is an infringement of copyright to reproduce this drawing by whatever means, without written consent from Feda Architects Ltd.
_Drawings are not to be scaled. All dimensions are to be checked on site.
_All errors to be reported to Feda Architects Ltd.

FEDA
ARCHITECTS
A: 38 Eskdale Terrace, Cullercoats, Newcastle. NE30 4PX
E: info@fedaarchitects.co.uk
W: https://www.fedaarchitects.co.uk



Side Elevation 02
1:100

_Drawing Title
Existing Side Elevation 02

_Project
44A Percy Gardens

_Project Number
23F_087
_Drawing Number
PER-FED-A-2.3.03
_Scale (A3)
1:100
_Status
PLANNING

REV	NOTES	DATE	DRWN	CHKD
P01	First Issue	30.10.23	PJL	

Residual Risks
It is assumed that all works on this drawing will be carried out by a competent contractor working to an appropriate method statement. Additional efforts will be made by Feda Architects Ltd to highlight hazard and risks associated with the works detailed on this drawing.

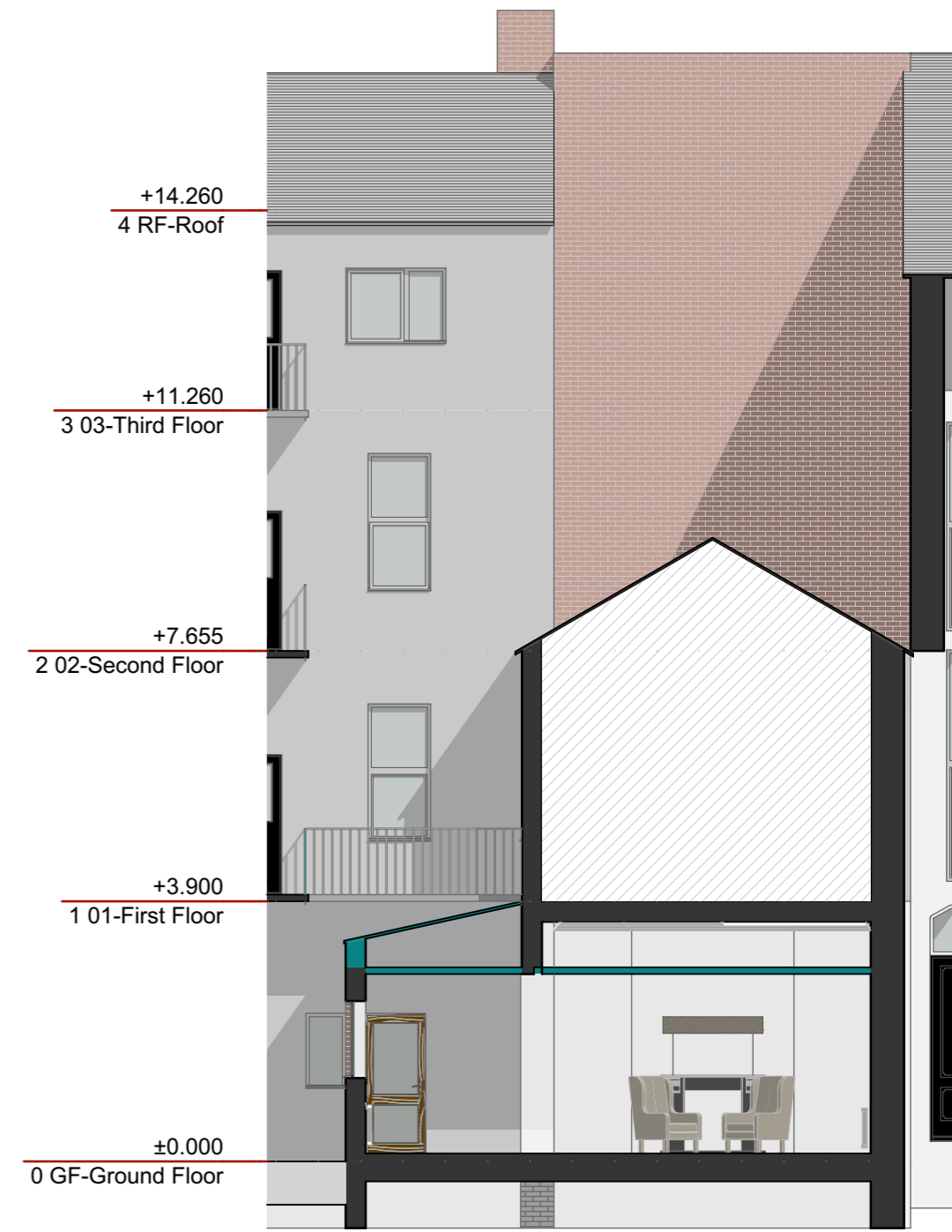
Drawing Notes
_This drawing is subject to Copyright, Designs and Patent Act 1988. It is an infringement of copyright to reproduce this drawing by whatever means, without written consent from Feda Architects Ltd.
_Drawings are not to be scaled. All dimensions are to be checked on site.
_All errors to be reported to Feda Architects Ltd.

FEDA
ARCHITECTS

A: 38 Eskdale Terrace, Cullercoats, Newcastle, NE30 4PX
E: info@fedaarchitects.co.uk
W: https://www.fedaarchitects.co.uk



Building Section
1:100



Building Section
1:100

_Drawing Title
Existing S-01 and S-02

_Project
44A Percy Gardens

_Project Number
23F_087
_Drawing Number
PER-FED-A-2.4.01
_Scale (A3)
1:100
_Status
PLANNING

Key:
■ to be demolished

REV	NOTES	DATE	DRWN	CHKD
P01	First Issue	30.10.23	PJL	

Residual Risks
It is assumed that all works on this drawing will be carried out by a competent contractor working to an appropriate method statement. Additional efforts will be made by Feda Architects Ltd to highlight hazard and risks associated with the works detailed on this drawing.

Drawing Notes
_This drawing is subject to Copyright, Designs and Patent Act 1988. It is an infringement of copyright to reproduce this drawing by whatever means, without written consent from Feda Architects Ltd.
_Drawings are not to be scaled. All dimensions are to be checked on site.
_All errors to be reported to Feda Architects Ltd.

FEDA
ARCHITECTS
A: 38 Eskdale Terrace, Cullercoats, Newcastle, NE30 4PX
E: info@fedaarchitects.co.uk
W: https://www.fedaarchitects.co.uk