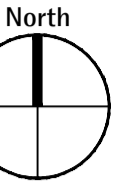


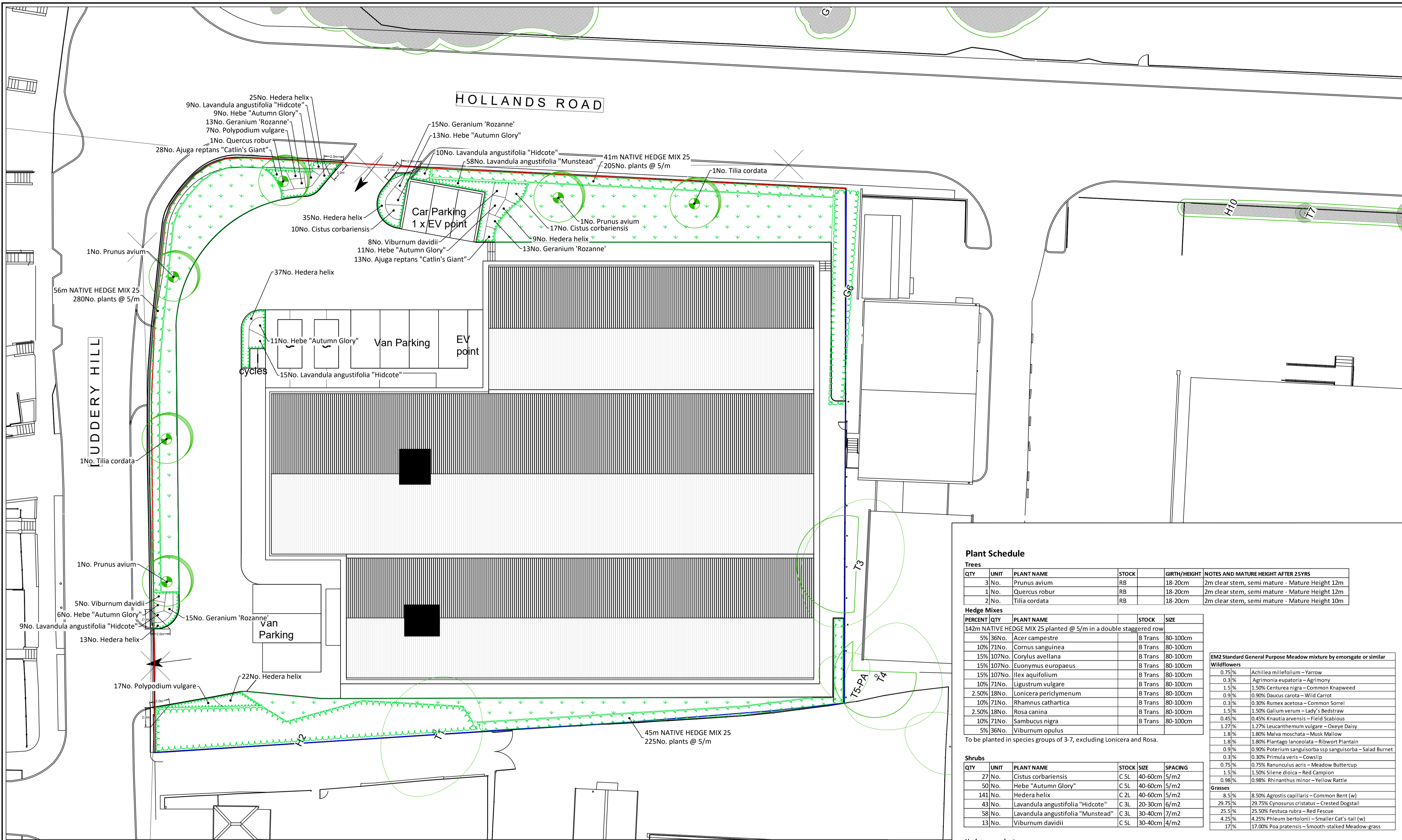
Notes
This drawing is subject to copyright.
Do not scale from this drawing.

Based on drawing by ROGER MEARS ARCHITECTS LLP
Drawing number 11B-Pro Site Plan



LEGEND

- Existing tree
- Existing Vegetation
- PROPOSED ELEMENTS**
- PLANTING**
- Proposed deciduous tree
- Proposed ground cover planting
- Proposed native hedge
- Species rich flowering meadow grass with 500mm occasionally mown edge adjacent to hard landscape, EM2 Standard general purpose meadow mixture by Emorsgate or similar.



Plant Schedule

Trees						
QTY	UNIT	PLANT NAME	STOCK	GIRTH/HEIGHT	NOTES AND MATURE HEIGHT AFTER 25YRS	
3	No.	Prunus avium	RB	18-20cm	2m clear stem, semi mature - Mature Height 12m	
1	No.	Quercus robur	RB	18-20cm	2m clear stem, semi mature - Mature Height 12m	
2	No.	Tilia cordata	RB	18-20cm	2m clear stem, semi mature - Mature Height 10m	

Hedge Mixes				
PERCENT	QTY	PLANT NAME	STOCK	SIZE
142m NATIVE HEDGE MIX 25 planted @ 5/m in a double staggered row				
5%	36No.	Acer campestre	B Trans	80-100cm
10%	71No.	Cornus sanguinea	B Trans	80-100cm
15%	107No.	Corylus avellana	B Trans	80-100cm
15%	107No.	Euonymus europaeus	B Trans	80-100cm
15%	107No.	Ilex aquifolium	B Trans	80-100cm
10%	71No.	Ligustrum vulgare	B Trans	80-100cm
2.50%	18No.	Lonicera periclymenum	B Trans	80-100cm
10%	71No.	Rhamnus cathartica	B Trans	80-100cm
2.50%	18No.	Rosa canina	B Trans	80-100cm
10%	71No.	Sambucus nigra	B Trans	80-100cm
5%	36No.	Viburnum opulus	B Trans	80-100cm

EM2 Standard General Purpose Meadow mixture by emorsgate or similar		
Wildflowers	Grasses	
0.75%	0.75%	Achillea millefolium - Yarrow
0.3%	1.50%	Agrimonia eupatoria - Agrimony
1.5%	0.98%	Centaurea nigra - Common Knapweed
0.9%	0.30%	Daucus carota - Wild Carrot
0.3%	0.30%	Rumex acetosa - Common Sorrel
1.5%	1.50%	Galium verum - Lady's Bedstraw
0.45%	0.45%	Knaulia arvensis - Field Scabious
1.27%	1.27%	Leucanthemum vulgare - Oxeye Daisy
1.8%	1.80%	Malva moschata - Musk Mallow
1.8%	1.80%	Plantago lanceolata - Ribwort Plantain
0.9%	0.90%	Poterium sanguisorba ssp sanguisorba - Salad Burnet
0.3%	0.30%	Primula veris - Cowslip
0.75%	0.75%	Ranunculus acris - Meadow Buttercup
1.5%	1.50%	Silene dioica - Red Camleon
0.98%	0.98%	Rhinanthus minor - Yellow Rattle
8.5%	8.50%	Agrostis capillaris - Common Bent (w)
29.75%	29.75%	Cynosurus cristatus - Crested Dogstail
25.5%	25.50%	Festuca rubra - Red Fescue
4.25%	4.25%	Phleum bertolonii - Smaller Cat's-tail (w)
17%	17.00%	Poa pratensis - Smooth-stalked Meadow-grass

Shrubs				
QTY	UNIT	PLANT NAME	STOCK	SPACING
27	No.	Cistus corbariensis	C 5L	40-60cm 5/m2
50	No.	Hebe "Autumn Glory"	C 5L	40-60cm 5/m2
141	No.	Hedera helix	C 2L	40-60cm 5/m2
43	No.	Lavandula angustifolia "Hidcote"	C 3L	20-30cm 6/m2
58	No.	Lavandula angustifolia "Munstead"	C 3L	30-40cm 7/m2
13	No.	Viburnum davidii	C 5L	30-40cm 4/m2

Herbaceous plants				
QTY	UNIT	PLANT NAME	STOCK	SPACING
41	No.	Ajuga reptans "Catlin's Giant"	C 2L	9/m2
56	No.	Geranium 'Rozanne'	C 2L	9/m2
24	No.	Polypodium vulgare	C 2L	5/m2

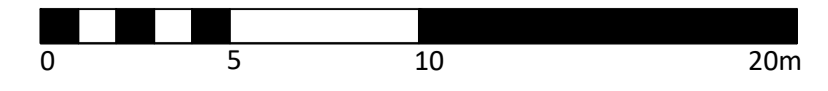
- Notes and Abbreviations**
- B = Bare root (bagged).
 - C = Container (or pot) grown, followed by size of the container (or pot)
 - QTY = Quantity
 - RB = Rootballed (balled and wrapped).
 - SIZE = Height or Spread of juvenile plant.
 - STOCK = Root condition/protection method eg Bare root.
 - Trans = Transplant (or undercut seedling).
- Refer to specification for further information.
- All plants to be completely hardened off
- Substitutions to be agreed with Landscape Architect.

HORTICULTURAL NOTES

- All work to be carried out to the satisfaction of the Landscape Architect. No planting position shall be altered without the approval of the Landscape Architect.
- Engineer to confirm foundation details in accordance with practice note 4.2 of the NHBC guide.
- All tree locations based on low/medium/high soil volume change potential as confirmed by the engineer.
- Planting will commence during the first planting season (mid Nov-mid March) after substantial completion of the site. Should planting commence outside the dormant period (October to mid-March), allow for all bare root stock to be supplied container grown and an intensive watering regime.
- All topsoil and subsoil is to be analysed by a qualified soil scientist and the findings supplied in report form including recommendations to bringing soils up to specification. The soil survey shall include analysis of representative topsoil and subsoil samples (sample numbers to be determined by the soil scientist) in accordance with the testing schedule. Test results without soil scientist's analysis for compliance against the specification and recommendations will not be acceptable.
- The soil profile for landscape areas shall be as follows:
Amenity grassed areas - 100mm Topsoil over 350mm Subsoil;
Shrub areas - 300mm Topsoil over 300mm Subsoil;
Tree pits - 300mm Topsoil over 600mm-800mm Subsoil (depending on size of rootball).
Topsoil to BS 3882:2015, Subsoil to BS 8601:2013.
All landscaped areas to be free draining.
- Contractors to ensure all planting beds and tree pits are free draining. Prior to topsoiling all compacted ground is to be fully de-compacted and deep ripped (400-600mm) to allow good drainage.
- All areas where soil is to be incorporated over formerly hard areas or compacted ground, these are to be excavated a further 300mm, or as required to remove all sub-base aggregate and backfilled to below topsoil level with free draining subsoil to match PH of topsoil used on site.

- Following settlement of subsoil, top up areas and cultivate to depth of topsoil.
- Contractor to only work with or over topsoil when dry to avoid compaction and the need for lengthy remedial operations to re-create a friable, free-draining soil.
- Trees to be selected and planted in accordance with BS 8545:2014. Tree pits in soft areas should be no deeper than the existing rootball or container depth and should have a diameter at least 75mm greater than the root system. The base of the tree pit, if sub-soil, should remain undisturbed, unless additional measures are specified, to avoid sinking of the rootball. Sides of the tree pit should be scarified to promote lateral root growth. The roofline should be proud of the soil and easily visible after planting. Tree stock should be supplied with nursery line marked on tree if available from nursery and line planted flush with ground level. Existing soil horizons (where visible/apparent) should be replicated as far as practicable.
- Unless specified otherwise, trees are to be secured by stakes: 14-16cm girth trees and below by single stake and 18-20cm girth trees and larger to be double staked. Multi-stem trees to be secured with single angled stake to main leader. Trees to be secured at low level (500mm) with biodegradable ties. Stakes to be placed outside of the rootball and extend at least 450mm into the ground. Once the tree has established stakes are to be removed (minimum 5 years).
- Each new tree pit shall incorporate a seep hose system to facilitate a hose being inserted to avoid unnecessary water loss. All trees planted in grass shall be fitted with mower/strimmer guards or mulched with a min 500mm diameter circle of mulch away from the main stem/trunk to protect stem/trunk from strimmer damage.
- Where trees are to be planted in close proximity to public services such as foul, surface and mains water, an appropriate root barrier such as ReRoot600 to 2000 or equivalent is to be installed to a depth below invert levels of services. Root barrier to be located as far from the tree as possible to maximise root growth and stability of the tree.
- Meadow/Wildflower areas to be installed on min 200mm graded, de-compacted and cultivated subsoil. To remove unwanted weed grasses, the area shall be treated with an appropriate systemic herbicide prior to seed bed cultivation and left for minimum two weeks.
- Where manhole covers are located in shrub beds or hedge planting ensure that plants are spaced appropriately so they are not immediately adjacent to the cover.
- All preparations, both hard and soft under/around trees to be retained must be carried out by

- hand to protect roots.
- All plant material procedures are to conform to the relevant British Standards (3936/4428) codes of practice and the specification.
- All shrubs are to be furnished with at least 3 strong breaks and supplied container grown. Shrubs to be planted in holes big enough to accommodate the plant without damaging the roots (min. 300mm³). Plants to be firmed, watered in and dead/damaged branches removed after planting. The use of pesticides (herbicides, insecticides, fungicides and slug pellets etc) should be discouraged to prevent cumulative fatal effects to animals via the food chain, particularly invertebrates, birds and/or mammals. Any pesticides used should be non-residual.
- A slow-release fertilizer shall be applied after planting in accordance with manufacturer's instructions.
- To enable establishment maintenance, tap points must be provided on a maximum 30m radius. Tap points to be GEKA type, recessed into planted areas in Rain Bird type plastic manhole chambers (colour green). Taps to be connected to the landlord supply, frost proof and lockable. Tap points to be included even if an automated irrigation system has been specified.
- All plant beds where access to ground floor windows is required are to have 400mm gravel strip offset from building facades. Gravel to be pea shingle or similar approved.
- All planted areas to be mulched with a medium grade bark mulch such as Melcourt Amenity Bark Mulch, 3-35mm, or similar, to a minimum depth of 50mm after plants have been well watered. Where perennials are used a fine composted mulch such as Melcourt Composted Fine Bark or similar shall be applied to a depth of 50mm Care must be taken not to smother the plants.
- Where appropriate hedge species shall be pruned by up to one third to promote bushy growth.
- All plants in native mixes to be fitted with spiral rabbit protection guards.
- Any tree, shrub or area of grass shall be replaced within a period of five years if they die within the next planting season after planting with another such plant of similar size and species.
- Should the site be at risk of rabbits, deer or badger appropriate measures should be agreed, prior to planting, to ensure successful plant establishment - staking turf, appropriate stock fencing etc.



Rev	Description	Date	Drawn	Checked
P02	Tree species revised to all native	26/09/23	TB	TB
P01	Issued for planning	19/09/23	SS	JH

Drawing Status
PLANNING

Allen Pyke LONDON • BATH • CAMBRIDGE
T 0208 8549 3434 F 01225 431 283 I 01223 358 055
www.allenpyke.co.uk
A registered practice of the Landscape Institute

Client	Cinch Self Storage	Scale	1:200@A1
Project	Duddery Hill Haverhill, Suffolk	Project No	3198
Drawing Title	Planting Plans	Date	01/09/23
Planting Schedule & Horticultural notes	By/Chk	SS/TB	
Drawing Number	3198-APA-ZZ-XX-PP-L-2001	Revision	P02