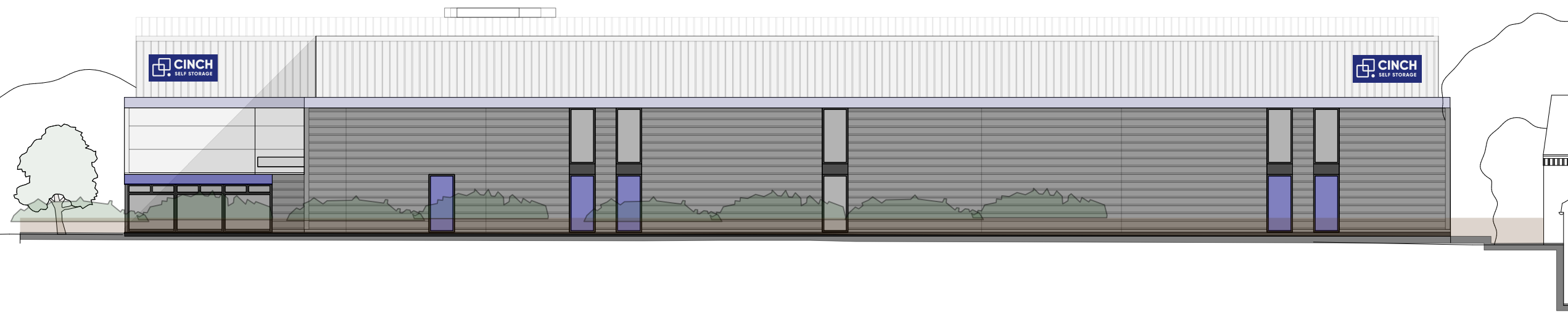
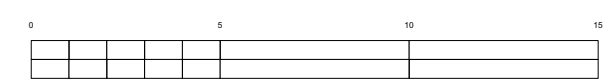


01 Proposed North Elevation
18 1:200@A3; 1:100@A1



02 Proposed West Elevation
18 1:200@A3; 1:100@A1



Notes

D	PLANNING	11.11.23
C	Adjustments	04.07.23
B	Adjustments	19.06.23
A	Post Planning Amendments	09.06.23

Revisions

Cinch Haverhill
Duddery Hill, Haverhill, Suffolk CB9 8DR

Proposed
North and West Elevations

ROGER MEARS ARCHITECTS LLP
2 Compton Terrace London N1 2UN

rma@rogermears.co.uk tel 020 7359 8222
www.rmears.co.uk fax 020 7354 5208

Date	Scale	Job No.	Code	Dwg No.
16.09.22	1:200@A3	2207		18 D