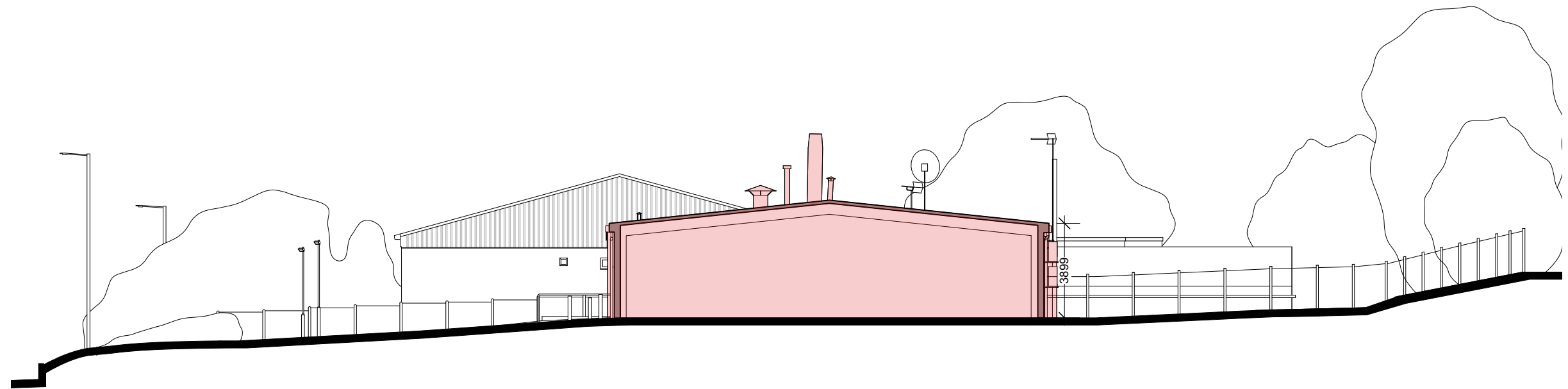
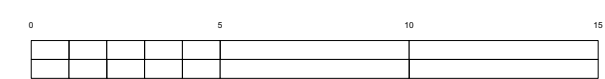


01 Existing Section A
09 1:200@A3; 1:100@A1



02 Existing Section B
09 1:200@A3; 1:100@A1



Notes

Building Demolished

PLANNING

A Updated to show demolition 11.10.23

Revisions

Cinch Haverhill
Duddery Hill, Haverhill, Suffolk CB9 8DR

Existing (showing demolition)
Sections

ROGER MEARS ARCHITECTS LLP
2 Compton Terrace London N1 2UN
rma@rogermears.co.uk tel 020 7359 8222
www.rmears.co.uk fax 020 7354 5208

Date	Scale	Job No.	Code	Dwg No.
16.09.22	1:200@A3	2207		09 A