

Notes

C	Window reinstated to East Elevation	31.10.23
B	PLANNING	11.10.23
A	Post Planning Amendments	09.06.23

Revisions

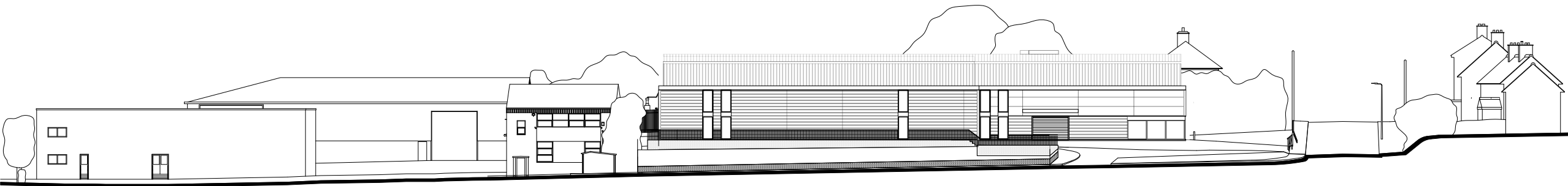
Cinch Haverhill  
 Duddery Hill, Haverhill, Suffolk CB9 8DR

Proposed  
 Long Elevations

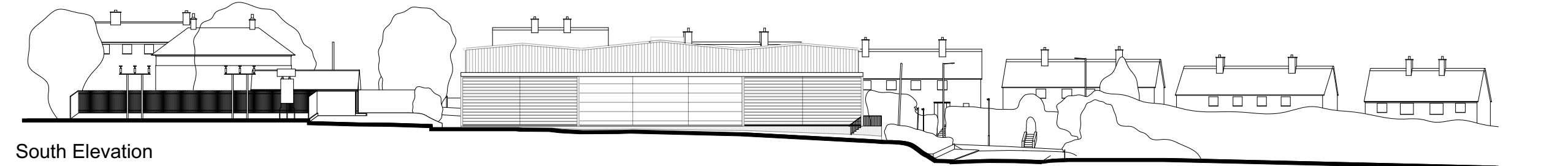
**ROGER MEARS ARCHITECTS LLP**  
 2 Compton Terrace London N1 2UN

rma@rogermears.co.uk tel 020 7359 8222  
 www.rmears.co.uk fax 020 7354 5208

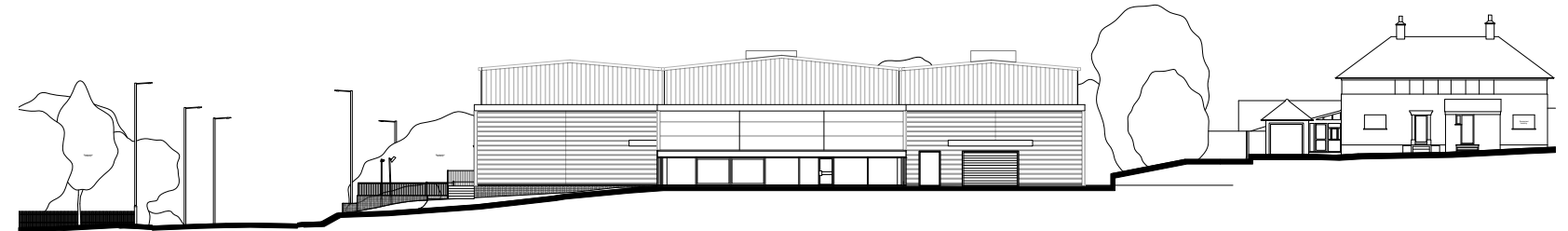
Date	Scale	Job No.	Code	Dwg No.
-	1:500@A3	2207		<b>16 C</b>



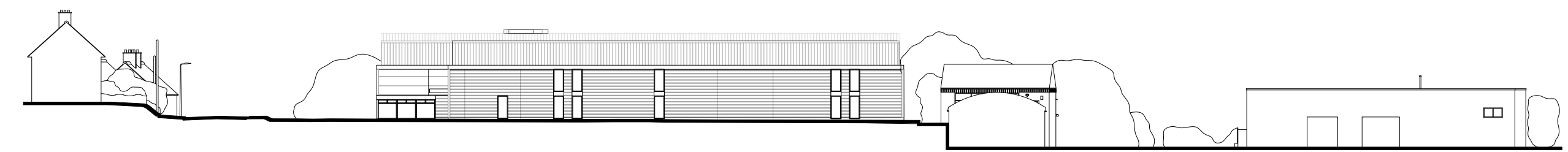
East Elevation



South Elevation



North Elevation



West Elevation

