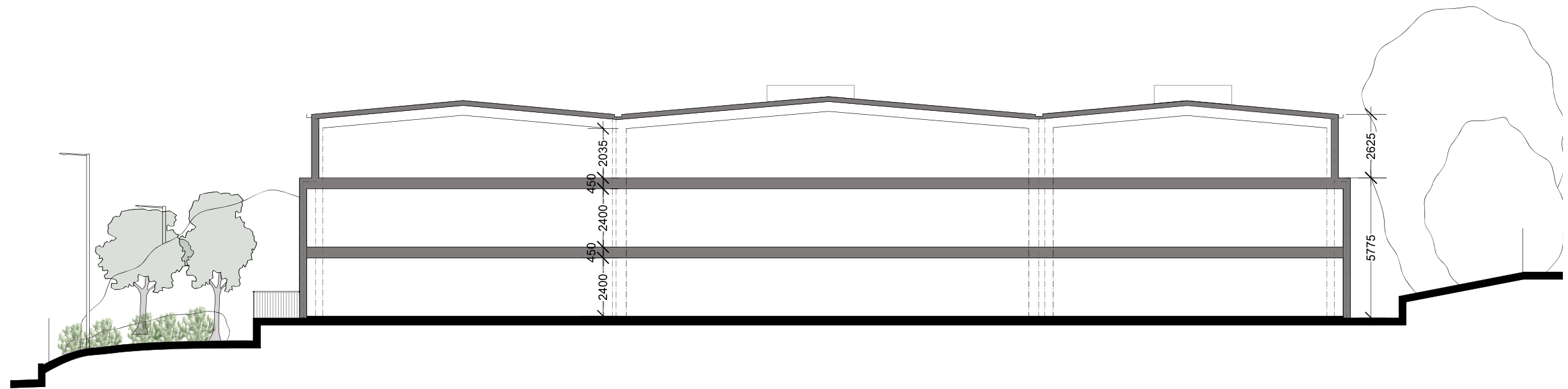


01 Proposed Section A
19 1:200@A3; 1:100@A1



02 Proposed Section B
19 1:200@A3; 1:100@A1



Notes

--	--	--

B PLANNING 11.11.23
A Post Planning Amendments 09.06.23

Revisions

Cinch Haverhill
Duddery Hill, Haverhill, Suffolk CB9 8DR

Proposed Sections

ROGER MEARS ARCHITECTS LLP
2 Compton Terrace London N1 2UN

rma@rogermears.co.uk tel 020 7359 8222
www.rmears.co.uk fax 020 7354 5208

Date	Scale	Job No.	Code	Dwg No.
16.09.22	1:200@A3	2207		19 C