

Air Conditioning

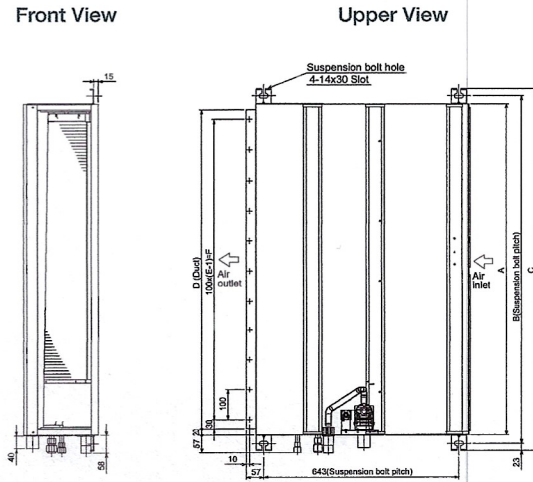
Product Information

PEAD-RP100JAQ (Three Phase)
Power Inverter Heat Pump
Ceiling Concealed Ducted System

Making a
 World of
 Difference

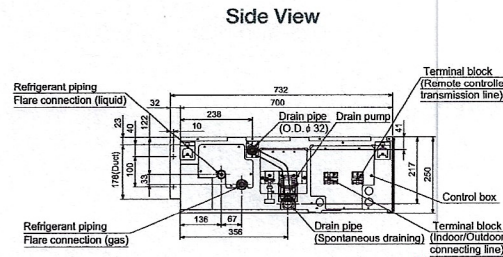
PEAD-RP - INDOOR UNITS		PEAD-RP100JAQ
CAPACITY (kW)	Heating (nominal)	11.2 (4.5-14.0)
	Cooling (nominal)	9.5 (4.9-11.4)
	Heating (UK)	9.5 (3.85-11.9)
	Cooling (UK)	9.2 (4.5-10.5)
SHF (nominal & UK)		0.82
COP / EER (nominal)		4.31 / 3.91
SCOP / SEER (BS EN14825)		4.2 / 5.5
ErP ENERGY EFFICIENCY CLASS		Heating/Cooling A+ / A
AIRFLOW (l/s)		Lo-Mi-Hi 400-483-567
PIPE SIZE mm (in)	Gas	15.88 (5/8")
	Liquid	9.52 (3/8")
EXTERNAL STATIC PRESSURE (Pa)		35-50-70-100-150
SOUND PRESSURE LEVEL (dBA) Lo-Mi-Hi		29-34-38
SOUND POWER LEVEL (dBA)		61
DIMENSIONS (mm) Width x Depth x Height		1400 x 732 x 250
WEIGHT (kg)		41
ELECTRICAL SUPPLY		Fed by Outdoor Unit
FUSE RATING (BS88) - HRC (A)		6
INTERCONNECTING CABLE No. Cores		4

DIMENSIONS



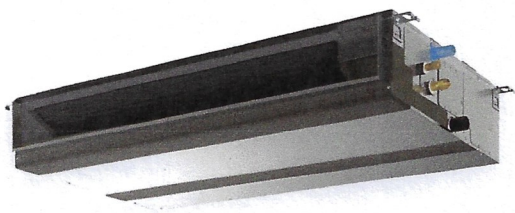
PUHZ-ZRP - OUTDOOR UNITS		PUHZ-ZRP100YKA2 (3)
SOUND PRESSURE LEVEL (dBA) Heating/Cooling		51 / 49
SOUND POWER LEVEL (dBA) Heating/Cooling		69
WEIGHT (kg)		123
DIMENSIONS (mm) Width x Depth x Height		1050 x 330 x 40 x 1338
ELECTRICAL SUPPLY		380-415v, 50Hz
PHASE		Three
SYSTEM POWER Heating/Cooling (nominal)		2.60 / 2.63
INPUT (kW) Heating/Cooling (UK)		2.08 / 2.26
STARTING CURRENT (A)		4.0
SYSTEM RUNNING CURRENT (A) Heating/Cooling [MAX]		4.23 / 4.20 [10.7]
FUSE RATING (BS88) - HRC (A)		16
MAINS CABLE No. Cores		5
MAX PIPE LENGTH (m)		75
MAX HEIGHT DIFFERENCE (m)		30
CHARGE R410A (kg) - 30m		5.0

(3) Three Phase



1 No AMU

Model	A	B	C	D	E	F
PEAD-RP100JAQ	1400	1454	1500	1360	14	1300



Telephone: 01707 282880
 email: air.conditioning@meuk.mee.co.uk web: www.airconditioning.mitsubishielectric.co.uk

UNITED KINGDOM Mitsubishi Electric Europe Living Environmental Systems Division
 Travellers Lane, Hatfield, Hertfordshire, AL10 8XB, England General Enquiries Telephone: 01707 282880 Fax: 01707 278881
 IRELAND Mitsubishi Electric Europe Westgate Business Park, Ballymount, Dublin 24, Ireland
 Telephone: Dublin (01) 419 8800 Fax: Dublin (01) 419 8890 International code: (003531)

Country of origin: United Kingdom - Japan - Thailand - Malaysia. ©Mitsubishi Electric Europe 2015. Mitsubishi and Mitsubishi Electric are trademarks of Mitsubishi Electric Europe B.V. The company reserves the right to make any variation in technical specification to the equipment described, or to withdraw or replace products without prior notification or public announcement. Mitsubishi Electric is constantly developing and improving its products. All descriptions, illustrations, drawings and specifications in this publication present only general particulars and shall not form part of any contract. All goods are supplied subject to the Company's General Conditions of Sale, a copy of which is available on request. Third-party product and brand names may be trademarks or registered trademarks of their respective owners.



Note: The fuse rating is for guidance only. Please refer to the relevant databook for detailed specification. It is the responsibility of a qualified electrician/electrical engineer to select the correct cable size and fuse rating based on current regulation and site specific conditions. Mitsubishi Electric's air conditioning and heat pump systems contain fluorinated greenhouse gases R410A, R407C and R134a.



www.greengateway.mitsubishielectric.co.uk

Mitsubishi Electric UK's commitment to the environment

Follow us @meuk_les
 Follow us @egreen_gateway

Mitsubishi Electric
 Living Environmental Systems UK

mitsubishielectric2

Effective as of April 2015

Air Conditioning

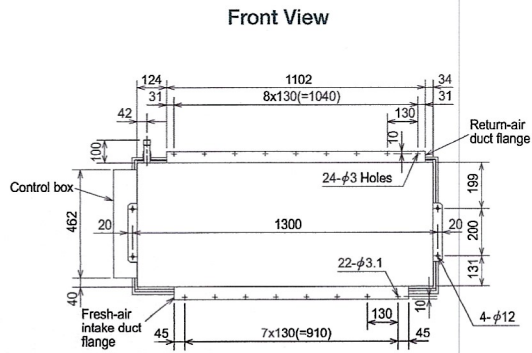
Product Information

PEA-RP200GAQ (Three Phase)
Standard Inverter Heat Pump
 Large Capacity Ceiling Concealed Ducted System

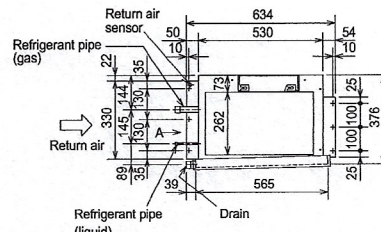
Making a
 World of
 Difference

PEA-RP - INDOOR UNITS		PEA-RP200GAQ ⁽³⁾ Three Phase
CAPACITY (kW)	Heating (nominal)	22.4 (9.5-25.0)
	Cooling (nominal)	19.0 (9.0-22.4)
	Heating (UK)	19.05 (8.1-21.25)
	Cooling (UK)	17.5 (8.3-20.6)
	SHF (nominal & UK)	0.81
COP / EER (nominal)		3.04 / 2.64
ENERGY LABEL Heating/Cooling (nominal)		D / D
AIRFLOW (l/s) Lo-Hi		867-1084
PIPE SIZE mm (in)	Gas	28.58 (1 1/8")
	Liquid	9.52 (3/8")
EXTERNAL STATIC PRESSURE (Pa)		150
SOUND PRESSURE LEVEL (dBA) (50Pa) Lo-Hi		48-51
DIMENSIONS (mm) Width x Depth x Height		1400 x 634 x 400
WEIGHT (kg)		70
ELECTRICAL SUPPLY		380-415v, 50Hz
PHASE		Three
POWER INPUT (kW) Nominal / UK		1.00 / 0.89
	STARTING CURRENT (A)	5.6
RUNNING CURRENT (A) [MAX]		2.0 [2.4]
FUSE RATING (BS88) - HRC (A)		6
MAINS CABLE No. Cores		5
INTERCONNECTING CABLE No. Cores		3

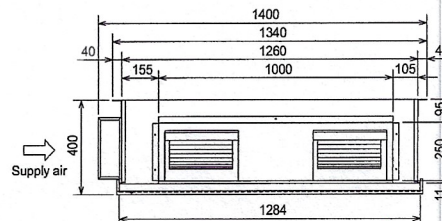
DIMENSIONS PEA-RP200GAQ



Upper View



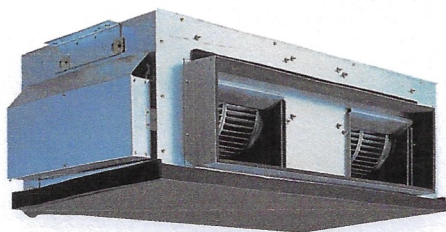
Back View



1 N° AHU .

PUHZ-P - OUTDOOR UNITS		PUHZ-P200YKA ⁽³⁾ Three Phase
SOUND PRESSURE LEVEL (dBA) Heating/Cooling		60 / 58
WEIGHT (kg)		127
DIMENSIONS (mm) Width x Depth x Height		1050 x 330+40 x 1338
ELECTRICAL SUPPLY		380-415v, 50Hz
PHASE		Three
SYSTEM POWER Heating/Cooling (nominal)		7.36 / 7.21
	INPUT (kW) Heating/Cooling (UK)	6.55 / 6.13
STARTING CURRENT (A)		5
RUNNING CURRENT (A) Heating/Cooling [MAX]		9.88 / 9.47 [19]
FUSE RATING (BS88) - HRC (A)		20
MAINS CABLE No. Cores		5
MAX PIPE LENGTH (m)		100
MAX HEIGHT DIFFERENCE (m)		30
CHARGE R410A (kg) - 30m		5.8

⁽³⁾ Three Phase



Telephone: 01707 282880

email: air.conditioning@meuk.mee.co.uk web: www.airconditioning.mitsubishielectric.co.uk

UNITED KINGDOM Mitsubishi Electric Europe Living Environmental Systems Division

Travellers Lane, Hatfield, Hertfordshire, AL10 8XB, England General Enquiries Telephone: 01707 282880 Fax: 01707 278881

IRELAND Mitsubishi Electric Europe Westgate Business Park, Ballymount, Dublin 24, Ireland

Telephone: Dublin (01) 419 8800 Fax: Dublin (01) 419 8890 International code: (003531)

Country of origin: United Kingdom - Japan - Thailand - Malaysia. ©Mitsubishi Electric Europe 2015. Mitsubishi and Mitsubishi Electric are trademarks of Mitsubishi Electric Europe B.V. The company reserves the right to make any variation in technical specification to the equipment described, or to withdraw or replace products without prior notification or public announcement. Mitsubishi Electric is constantly developing and improving its products. All descriptions, illustrations, drawings and specifications in this publication present only general particulars and shall not form part of any contract. All goods are supplied subject to the Company's General Conditions of Sale, a copy of which is available on request. Third-party product and brand names may be trademarks or registered trademarks of their respective owners.



Note: The fuse rating is for guidance only. Please refer to the relevant databook for detailed specification. It is the responsibility of a qualified electrician/electrical engineer to select the correct cable size and fuse rating based on current regulation and site specific conditions. Mitsubishi Electric's air conditioning and heat pump systems contain fluorinated greenhouse gases R410A, R407C and R134a.



www.greengateway.mitsubishielectric.co.uk

Mitsubishi Electric UK's commitment to the environment

Follow us @meuk_les
 Follow us @green_gateway

Mitsubishi Electric
 Living Environmental Systems UK

mitsubishielectric2

Effective as of April 2015

De-Hum 1 N^e

Item		Model	FDC250VSA-W			
Power source			3 Phase 380-415V 50Hz / 380V 60Hz			
Operation data	Nominal cooling capacity	kW	25.0			
	Nominal heating capacity	kW	28.0			
	Sound power level	Cooling	dB(A)	73		
		Heating		75		
	Sound pressure level	Cooling		58		
		Heating		62		
Silent mode sound pressure level	Cooling	56 /55 (Normal/Silent)				
	Heating	59 /58 (Normal/Silent)				
Exterior dimensions (Height x Width x Depth)		mm	1505x970x370			
Exterior appearance (Munsell color) (RAL color)			Stucco white (4.2Y7.5/1.1) near equivalent (RAL 7044) near equivalent			
Net weight		kg	145			
Compressor type & Q'ty			GTC5150SC40MF x1			
Compressor motor (Starting method)		kW	Direct line start			
Refrigerant oil (Amount, type)		L	1.55 (M-MB75R)			
Refrigerant (Type, amount, pre-charge length)		kg	R32 5.1 in outdoor unit (Incl. the amount for the piping of 30m)			
Heat exchanger			M shape & inner grooved tubing			
Refrigerant control			Electronic expansion valve			
Fan type & Q'ty			Propeller fan x2			
Fan motor (Starting method)		W	86x2 < Direct line start >			
Air flow	Cooling	m ³ /min	148			
	Heating		153			
Shock & vibration absorber			Rubber sleeve (for compressor)			
Electric heater		W	20 (Crank case heater)			
Safety equipments			Internal thermostat for fan motor Abnormal discharge temperature protection			
Installation data	Refrigerant piping size (O.D.)	mm	Liquid line: ϕ 12.7 (1/2") Gas line: ϕ 22.22 (7/8")			
	Connecting method		Liquid line : Flare / Gas : Brazing			
	Attached length of piping	m	—			
	Insulation for piping		Necessary (both Liquid & Gas lines)			
	Refrigerant line (one way) length	m	Max.70			
	Vertical height diff. between O/U and I/U	m	Max.50 (Outdoor unit is higher & Outdoor air temperature \leq 43°C)			
			Max.30 (Outdoor unit is higher & Outdoor air temperature > 43°C)			
Max.15 (Outdoor unit is lower)						
Drain hose		Hole size ϕ 20 x 3 pcs.				
IP number			IP24			
Standard accessories			Connecting pipe, Edging			
Option parts			—			
Notes		(1) The data are measured at the following conditions. The pipe length is 7.5m.				
	Item	Indoor air temperature		Outdoor air temperature		Standards
Operation		DB	WB	DB	WB	
Cooling		27°C	19°C	35°C	24°C	
Heating		20°C	—	7°C	6°C	
(2) This air-conditioner is manufactured and tested in conformity with the ISO.						
(3) Sound level indicates the value in an anechoic chamber. During operation these values are somewhat higher due to ambient conditions.						
(4) The operation data indicate when the air-conditioner is operated at 400V 50Hz or 380V 60Hz.						



SRK71VNXWZR

7.1 (3.2 ~ 8.0)

Indoor Unit : SRK71ZR-W

Outdoor Unit : FDC71VNX-W

R32

Specifications

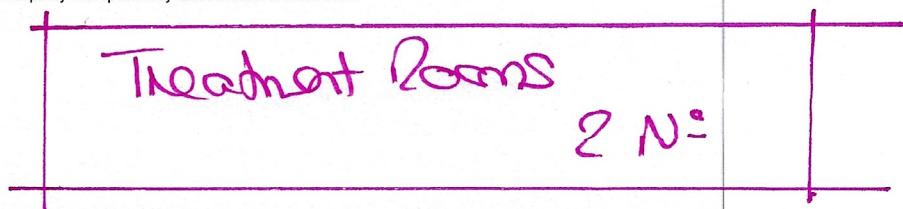
Indoor unit		SRK71ZR-W	
Outdoor unit		FDC71VNX-W	
Power source		1 Phase 220-240V, 50Hz / 220V, 60Hz	
Nominal cooling capacity (Min~Max)		kW	7.1 (3.2 ~ 8.0)
Nominal heating capacity (Min~Max)		kW	8.0 (3.6 ~ 9.0)
Power consumption		Cooling/Heating	kW 1.93 / 1.78
EER/COP		Cooling/Heating	3.68 / 4.49
Inrush current		A	5
Max. running current		A	19.1
Sound power level*1	Indoor	Cooling/Heating	57 / 60
	Outdoor	Cooling/Heating	66 / 66
Sound pressure level*1	Indoor	Cooling (Hi/Me/Lo/Ulo)	dB(A) 44 / 41 / 37 / 25
		Heating (Hi/Me/Lo/Ulo)	
	Outdoor	Cooling/Heating	51 / 51
Air flow	Indoor	Cooling (Hi/Me/Lo/Ulo)	m ³ /min 20.5 / 18.6 / 16.2 / 10.4
		Heating (Hi/Me/Lo/Ulo)	
	Outdoor	Cooling/Heating	60 / 50
Exterior Dimensions	Indoor	Height x Width x Depth	mm Unit: 339 x 1,197 x 262
	Outdoor		
Net weight	Indoor / Outdoor	kg	15.5 / 60
Refrigerant	Type/GWP	R32/675	
Refrigerant	Charge	kg/TCO2Eq	2.75/1.86
Refrigerant piping size	Liquid/Gas	ø mm	6.35 (1/4") / 15.88(5/8")
Refrigerant line (one way) length		m	Max.50
Vertical height differences	Outdoor is higher/lower	m	Max.30 / Max.15
Outdoor operating temperature range	Cooling*2	°C	-15~50
	Heating		-20~20
Panel	T-PSA-5AW-E, T-PSAE-5AW-E		
Air filter quantity	Polypropylene net x 2(washable)		
Remote control (option)	wired:RC-EX3A, RC-E5, RCH-E3 & Interface kit:SC-BIKN2-E		
Energy Class (Cooling/Heating)	A++/A+		
SEER	6.80		
SCOP (Average climate)	4.56		
Pdesign (cooling/heating(@-10°C))	kW	7.1/5.8	
Annual Electricity Consumption (cooling/heating)	kWh/a	366/1782	
Designated Heating Season	Average		

The data is measured under the following conditions(ISO-T1).

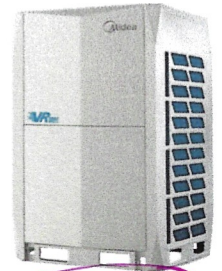
Cooling: Indoor temp. of 27°CDB, 19°CWB, and outdoor temp. of 35°CDB. Heating: Indoor temp. of 20°CDB, and outdoor temp. of 7°CDB, 6°CWB.

*1 : Indicates the value in an anechoic chamber. During operation these values are somewhat higher due to ambient conditions.

*2 : If a cooling operation is conducted when the outdoor air temperature is -5°C or lower, the outdoor unit should be installed at a place where it is not influenced by natural wind. If wind blows, the low pressure will drop and compressor frequency will increase, this will cause the capacity to drop and may cause the unit to break down.



V6R HEAT RECOVERY



MODEL			MV6-R252WV2RNI	MV6-R280WV2RNI	MV6-R335WV2RNI
HP			8	10	12
Power supply		V/Ph/Hz	380-415/3/50		
Recommended Fuse Size		A	20	25	25
Cooling	Capacity	kW	25,2	28	33,5
Heating	Capacity	kW	27	31,5	37,5
Connectable indoor unit	Total capacity		50-200% of outdoor unit capacity		
	Max. quantity		64		
Compressor	Type		DC inverter		
	Quantity		1		
Fan motor	Type		DC motor		
	Quantity		2		
	Static pressure	Pa	0,20,40,60,80(Selectable)		
Refrigerant	Type		R410A		
	GWP		2088		
	Factory charging	kg	8	8	8
Pipe connections	Liquid pipe	mm(inch)	Ø12.7(1/2)	Ø12.7(1/2)	Ø12.7(1/2)
	Low pressure gas pipe	mm(inch)	Ø28.6(1 1/8)	Ø28.6(1 1/8)	Ø28.6(1 1/8)
	High pressure gas pipe	mm(inch)	Ø19.1(3/4)	Ø19.1(3/4)	Ø19.1(3/4)
Air flow rate		m ³ /h	9000	9500	10000
Sound pressure level		dB(A)	58	58	60
Net Dimensions (WxHxD)		mm	990x1635x790		
Packing size (WxHxD)		mm	1090x1805x860		
Net weight		kg	232	232	232
Gross weight		kg	248	248	248
Operating temperature range		°C	Cooling: -15-52; Heating: -25-19; Simultaneous Cooling / Heating: -5-27 / -5-19		

Nominal Conditions: Cooling: indoor 27°C DB, 19°C WB; outdoor 35°C DB, 24°C WB.
 Nominal Conditions: Heating: indoor 20°C DB, outdoor 7°C DB, 6°C WB.
 Sound Pressure is measured 1.0m below the air-outlet at Nominal Conditions.

Pipe sizes can vary depending on actual connected capacity – a schematic can be provided for installation to provide job specific requirements.

Gen A/c
x 1

AG ECO - WALL MOUNTED

INDOOR			AG2Eco-09NXD0-I(U2)	AG2Eco-12NXD0-I(U2)	AG2Eco-18NXD0-I(U2)	AG2Eco-24NXD0-I(U2)
OUTDOOR			AG2Eco-09N8D0-O(U2)	AG2Eco-12N8D0-O(U2)	AG2Eco-18N8D0-O(U2)	AG2Eco-24N8D0-O(U2)
Nominal Cooling Capacity (min-max)		kW	2.64 (1.02 - 3.22)	3.51 (1.37 - 4.30)	5.27 (3.39 - 5.89)	7.03 (2.11 - 8.20)
Nominal Heating Capacity (min-max)		kW	2.93 (0.82 - 3.37)	3.80 (1.69 - 4.38)	5.56 (3.10 - 5.84)	7.32 (1.55 - 8.20)
UK Total Cooling Capacity		kW	3.06	4.08	5.59	7.79
Power supply (indoor power via outdoor)		V-Hz-Ph	220-240V- 50Hz, 1Ph	220-240V- 50Hz, 1Ph	220-240V- 50Hz, 1Ph	220-240V- 50Hz, 1Ph
Cooling Current (min-max)		A	3.18 (0.35-4.78)	4.76 (0.5-7.2)	6.7(2.4-9)	10.5(1.8-13.9)
Heating Current (min-max)		A	3.35 (0.32-4.32)	4.46 (0.5-6.4)	7.6(3.4-8.7)	9.3(1.3-13.5)
Max. Current		A	10	10	13	19
Outdoor Recommended Fuse Size		A	16	16	16	20
Interconnecting/Indoor Power Wiring		No.	5 Core 1.5mm*	5 Core 1.5mm*	5 Core 1.5mm*	5 Core 2.5mm*
Seasonal Efficiency SEER/Class		W/W	7.4/A++	7.0/A++	7.0/A++	6.4/A++
Seasonal Efficiency SCOP/Class		W/W	4.1/A+	4.2/A+	4.0/A+	4.0/A+
Indoor air flow (High- Low)		m3/h	520/460/330	530/400/350	800/600/500	1090/770/610
Indoor Sound Pressure Level (High-Low)		dB(A)	37/32/22/20	37/32/22/21	41/37/31/20	46/37/34.5/21
Indoor unit	Dimensions (W*D*H)	mm	726x210x291	835x208x295	969x241x320	1083x244x336
	Packing (W*D*H)	mm	790x270x375	905x290x355	1045x315x405	1155x315x415
	Net/Gross weight	Kg	8/10.5	8.7/11.5	11.2/14.6	13.6/17.3
Outdoor air flow		m3/h	1850	1850	2100	3500
Outdoor sound pressure level		dB(A)	55.5	55	57	60
Outdoor unit	Dimensions (W*D*H)	mm	720x270x495	720x270x495	874x330x554	955x342x673
	Packing (W*D*H)	mm	835x300x540	835x300x540	915x370x615	995x398x740
	Net/Gross Weight	Kg	23.5/25.4	23.7/25.5	33.5/36.1	43.9/46.9
Refrigerant	Type		R32	R32	R32	R32
	GWP		675	675	675	675
	Charged quantity	Kg	0.6	0.65	1.1	1.45
	Additional charge	g/m	12	12	12	24
Refrigerant piping	Liquid side/ Gas side	mm (inch)	Ø6.35/ Ø9.52(1/4"/3/8")	Ø6.35/ Ø9.52(1/4"/3/8")	Ø6.35/Ø12.7(1/4"/1/2")	Ø9.52/Ø15.9(3/8"/5/8")
	Max. Refrigerant pipe	m	25	25	30	50
	Max. height difference	m	10	10	20	25
Thermostat type			Remote Control	Remote Control	Remote Control	Remote Control
Operating temperature	Indoor (cooling/ heating)	°C	16-32/0-30	16-32/0-30	16-32/0-30	16-32/0-30
	Outdoor (cooling/heating)	°Cw	-15-50/-15-24	-15-50/-15-24	-15 -50/-15-24	-15-50/-15-24

Nominal Conditions: Cooling; indoor 27°C DB, 19°C WB, outdoor 35°C DB, 24°C WB.
 Nominal Conditions: Heating; indoor 20°C DB, outdoor 7°C DB, 6°C WB.
 UK Conditions: Summer: indoor 21°C DB, 15°C WB, outdoor 27°C DB.

Sound Pressure is measured 1.0m below the air-outlet at Nominal Conditions.
 *4 Core option is available.
 Larger wall mounted units available

Comms Room x 1.