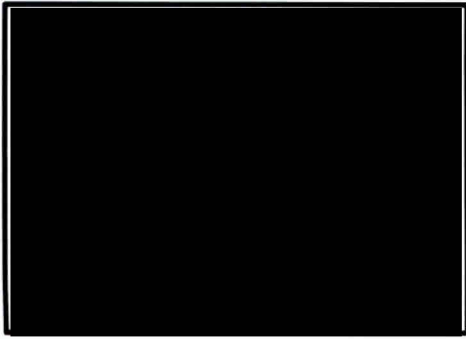


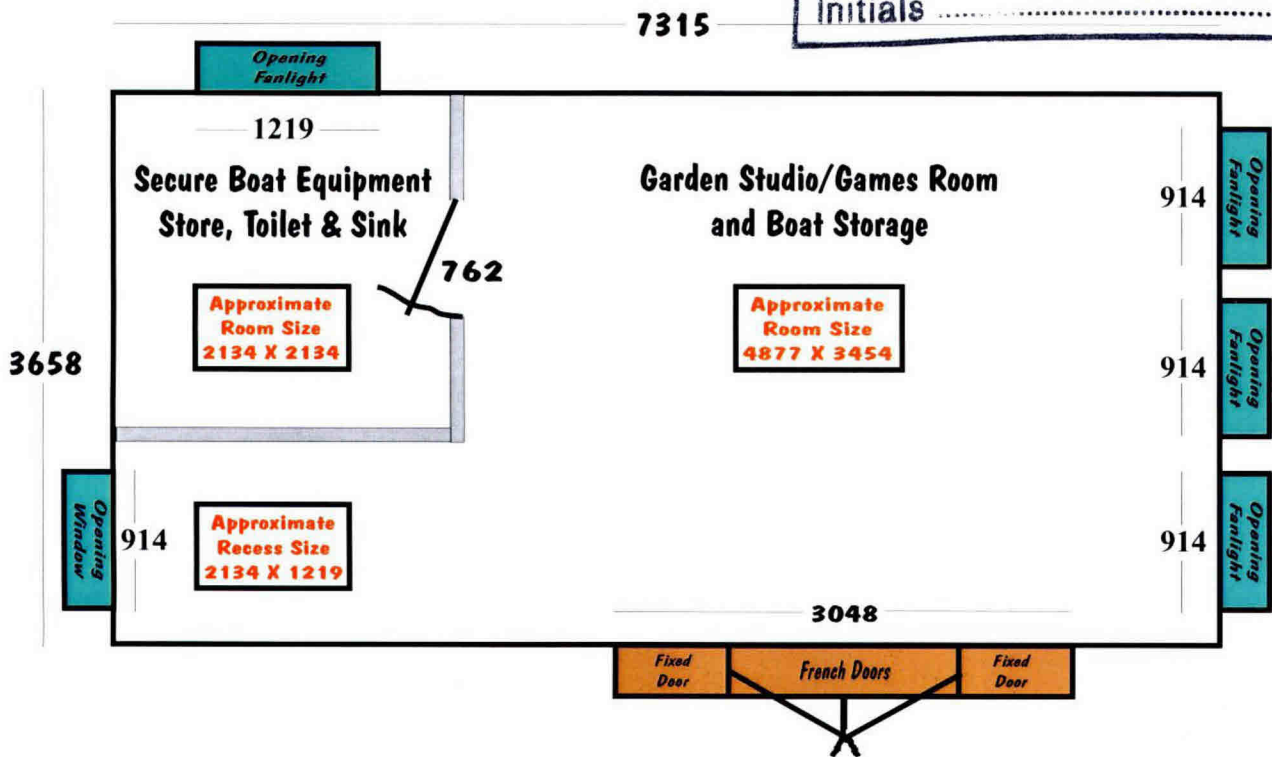
LGB Internally Lined Double Glazed Alverstone Studio



Thursday, 24th January 2013

Overall Width (Gables)	3658mm	Roof Black Square Felt Roof Tiles
Overall Length (Sides)	7315mm	Walls T&G Shiplap cladding to be stained in Weathershield
Overall external height at eaves	2337mm	Floor Timber floor, floor joists and floor bearers
Overall external height at the ridge apex	2845mm	Foundations Reinforced concrete base
Internal frame height/roof pitch	2083mm/15°	Drainage Guttering and a down-pipe to both sides of the roof eaves
		Ventilation X5, opening fanlight windows

This is the plan referred to
in plan No. P/ 00035/13
28 JAN 2013
Initials



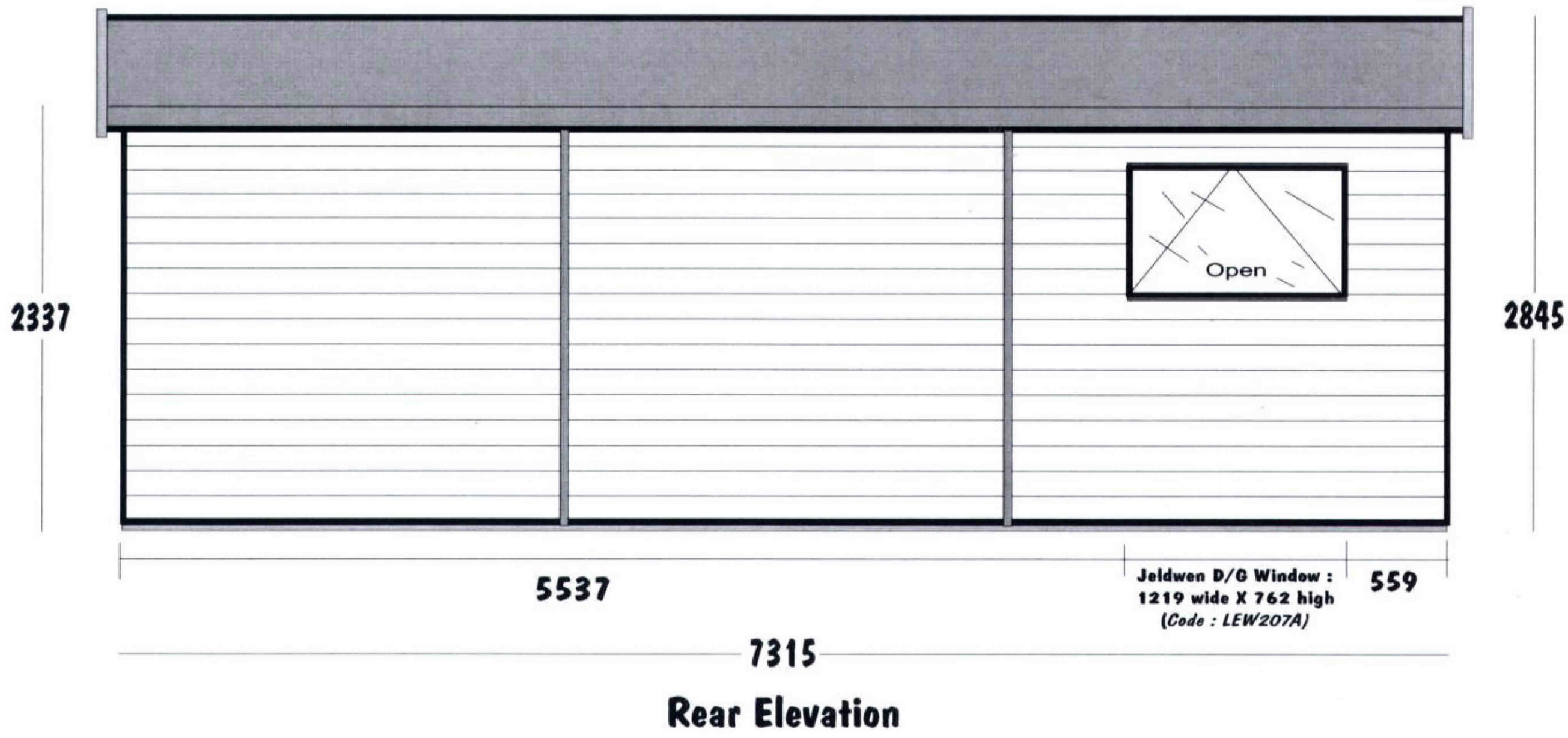
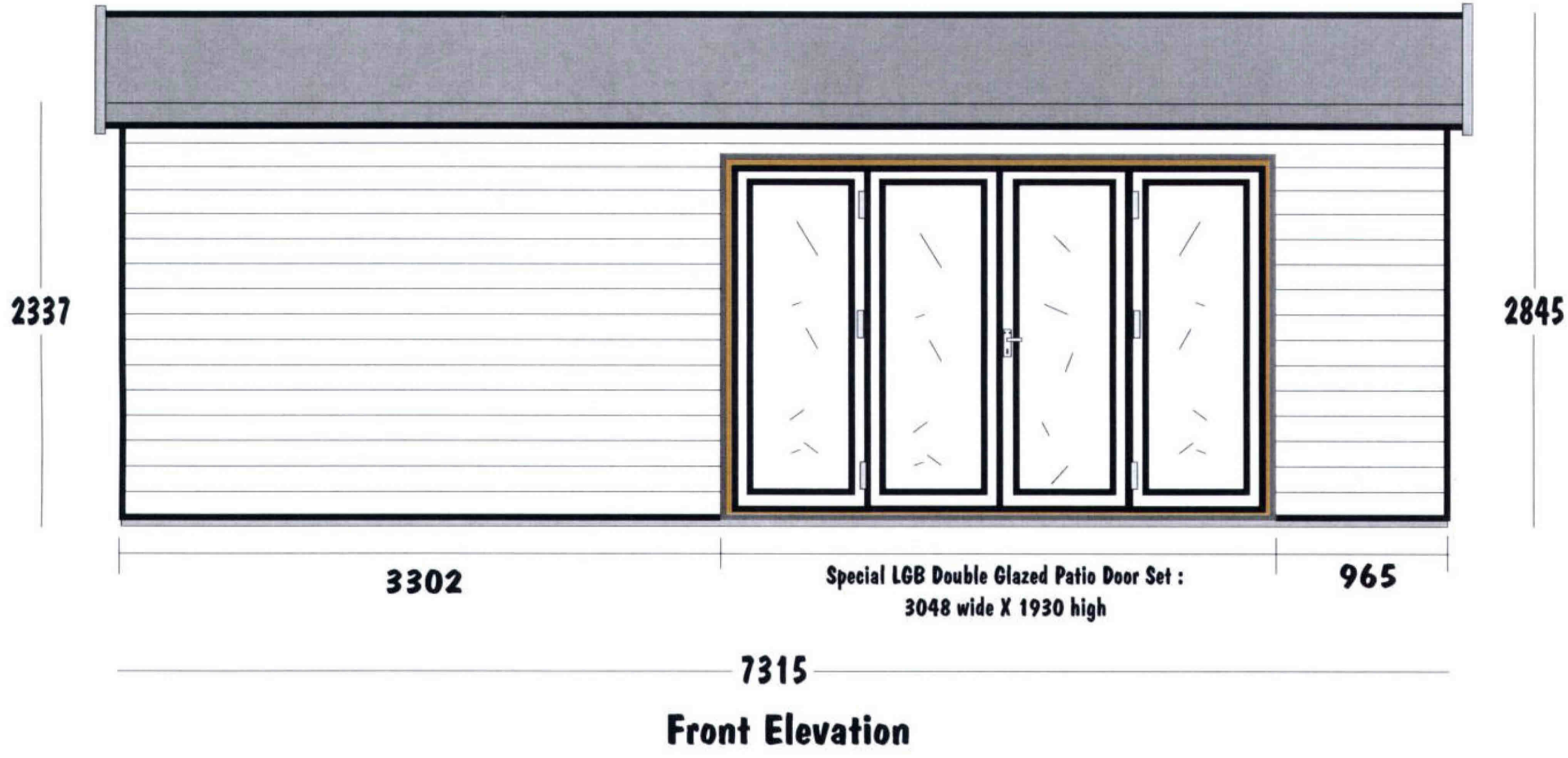
Floor Plan

LGB Internally Lined Double Glazed Alverstone Studio



Thursday, 10th January 2013

Overall Width (Gables)	3658mm	Roof Black Square Felt Roof Tiles
Overall Length (Sides)	7315mm	Walls T&G Shiplap cladding to be stained in Weathershield
Overall external height at eaves	2337mm	Floor Timber floor, floor joists and floor bearers
Overall external height at the ridge apex	2845mm	Foundations Reinforced concrete base
Internal frame height/roof pitch	2083mm/15°	Drainage Guttering and a down-pipe to both sides of the roof eaves
		Ventilation X5, opening fanlight windows



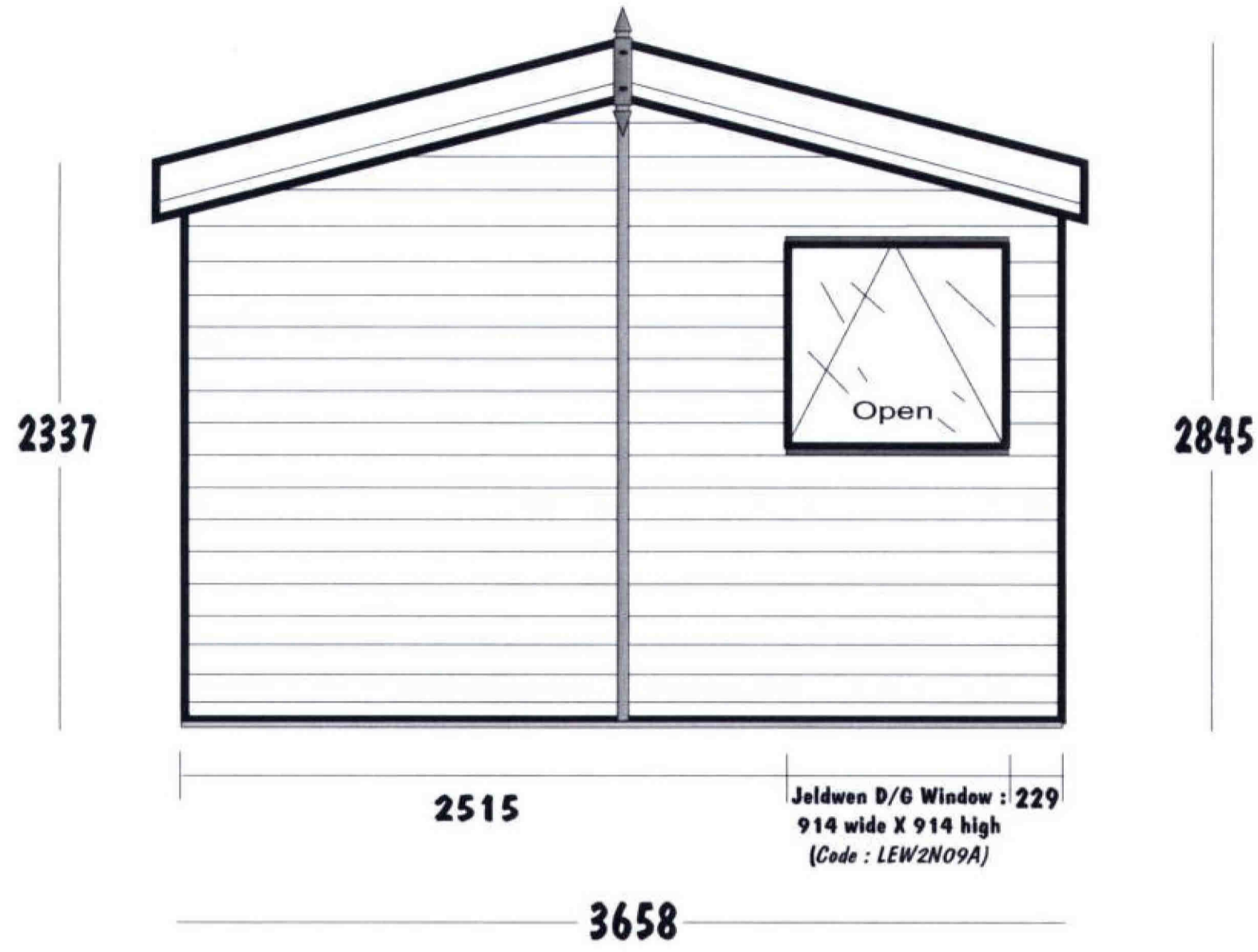
Scale : 1:50

LGB Internally Lined Double Glazed Alverstone Studio

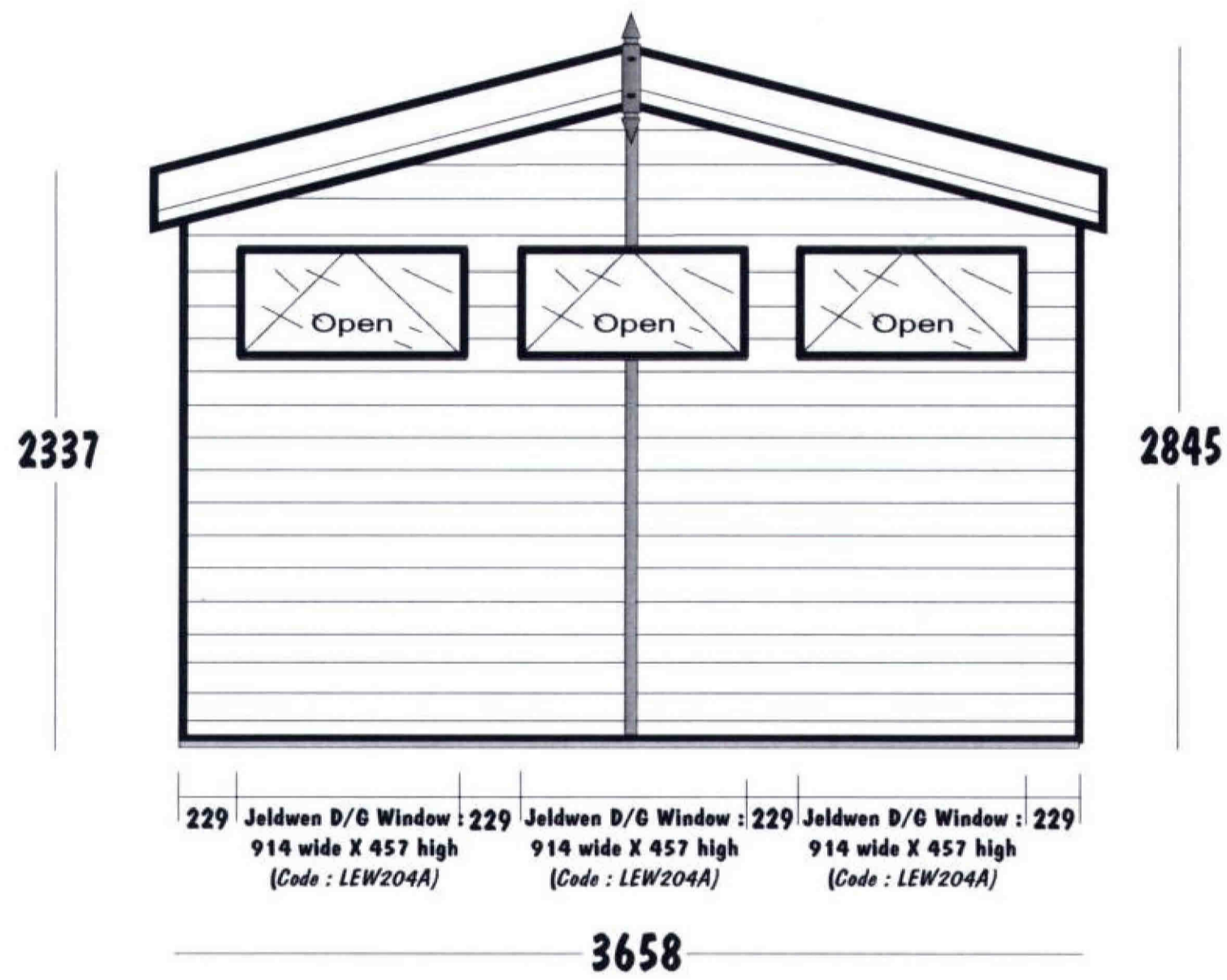


Thursday, 10th January 2013

Overall Width (Gables)	3658mm	Roof Black Square Felt Roof Tiles
Overall Length (Sides)	7315mm	Walls T&G Shiplap cladding to be stained in Weathershield
Overall external height at eaves	2337mm	Floor Timber floor, floor joists and floor bearers
Overall external height at the ridge apex	2845mm	Foundations Reinforced concrete base
Internal frame height/roof pitch	2083mm/15°	Drainage Guttering and a down-pipe to both sides of the roof eaves
		Ventilation X5, opening fanlight windows



Left Hand Gable Elevation



Right Hand Gable Elevation

Scale : 1:50