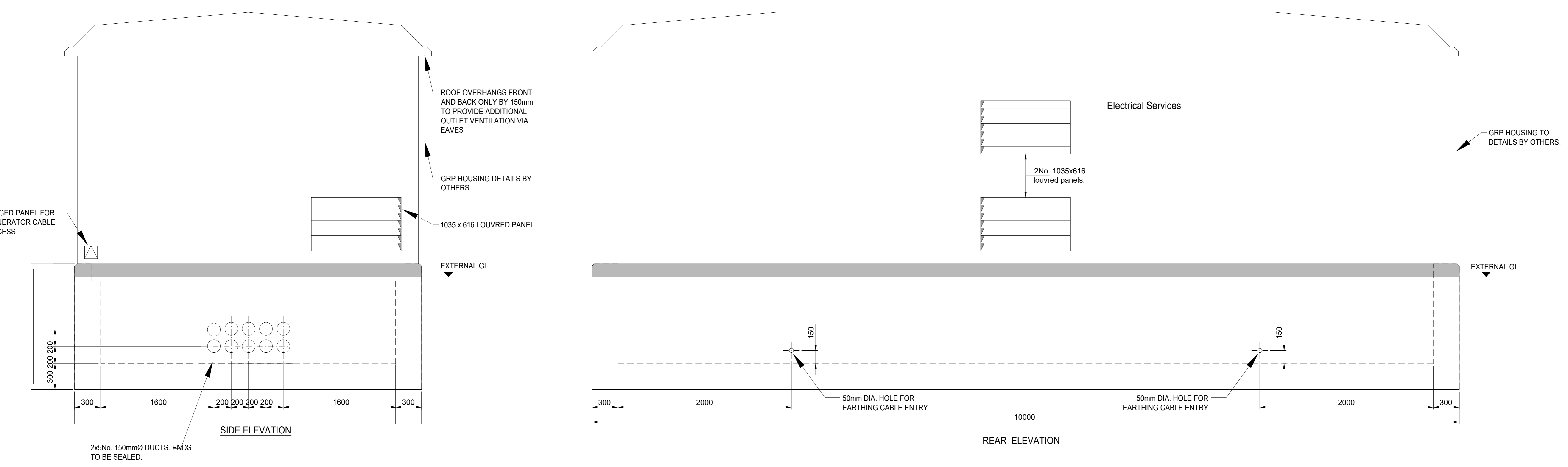
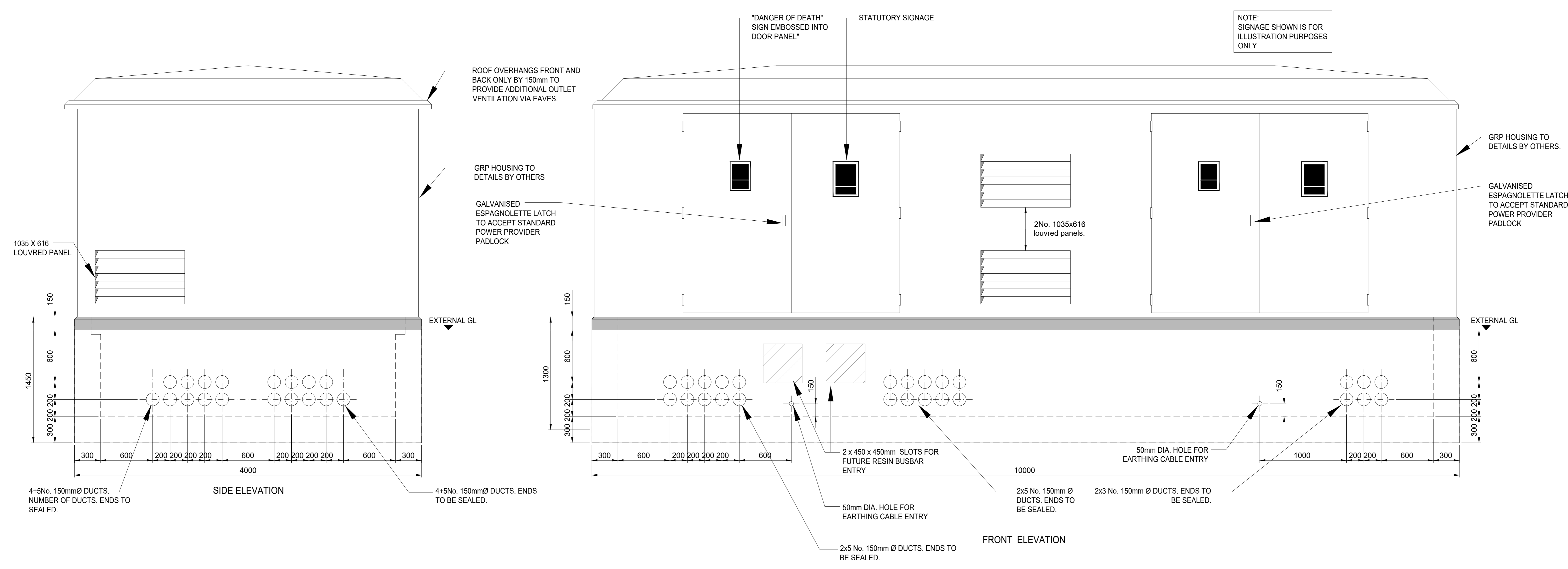


THE CONTRACTOR SHALL NOTE THESE DRAWINGS ARE DESIGN DRAWINGS. THE CONTRACTOR IS TO DEVELOP THE DESIGN INTO WORKING DRAWINGS IN COORDINATION WITH ALL ARCHITECTS, STRUCTURAL & SERVICES DRAWINGS AND SPECIFICATIONS. THE CONTRACTOR'S WORKING DRAWINGS SHALL BE USED AS THE BASE DRAWINGS FOR THE INSTALLATION. THESE DRAWINGS SHALL BE SUBMITTED TO THE ENGINEER & ARCHITECT FOR THEIR COMMENTS/ APPROVAL PRIOR TO INSTALLATION. FAILURE TO ADHERE TO THE ABOVE MAY RESULT IN THE CONTRACTOR HAVING TO REMOVE AND REINSTALL THE EQUIPMENT AT THEIR OWN COST.



This drawing is copyright & may not be altered, reproduced or used other than for the Contract Works for which it is issued without the written permission of Stuart McCurry & Partners Limited.

Do not scale this drawing. Verify all dimensions & structural details on site. If in doubt, ask before starting.

Read this drawing in conjunction with the appropriate Specifications.

The purpose of this drawing when issued as a Tender Drawing is to enable tenders to be prepared correctly. The design and to submit complete tenders for the work. A Tender Drawing whether original or amended shall not be used as an installation Drawing except under the terms contained in the conditions of Tender.

edition	date	designed	drawn	checked
T1	23.06.23	CS	CP	CS
T1	TENDER ISSUE			

**SMP**  
Consulting Engineers - Building Services

Stuart McCurry & Partners Limited  
11 Chiltern Court  
Ashridge Road  
Chesham  
Buckinghamshire HP5 2PX  
Email: engineers@smpengineering.co.uk  
Web: www.stuartmccurrypartners.co.uk  
Tel: 01296 696780

job title  
**FRIMLEY HOSPITAL  
DIPU M BLOCK SUBSTATION**

drawing title  
**Electrical Services  
SUBSTATION GRP AND  
FOUNDATION DETAILS**

job no.	scale	status
23-025	1:20@A0	TENDER
drawing no.	edition	
00-E-DE-100-03	T1	