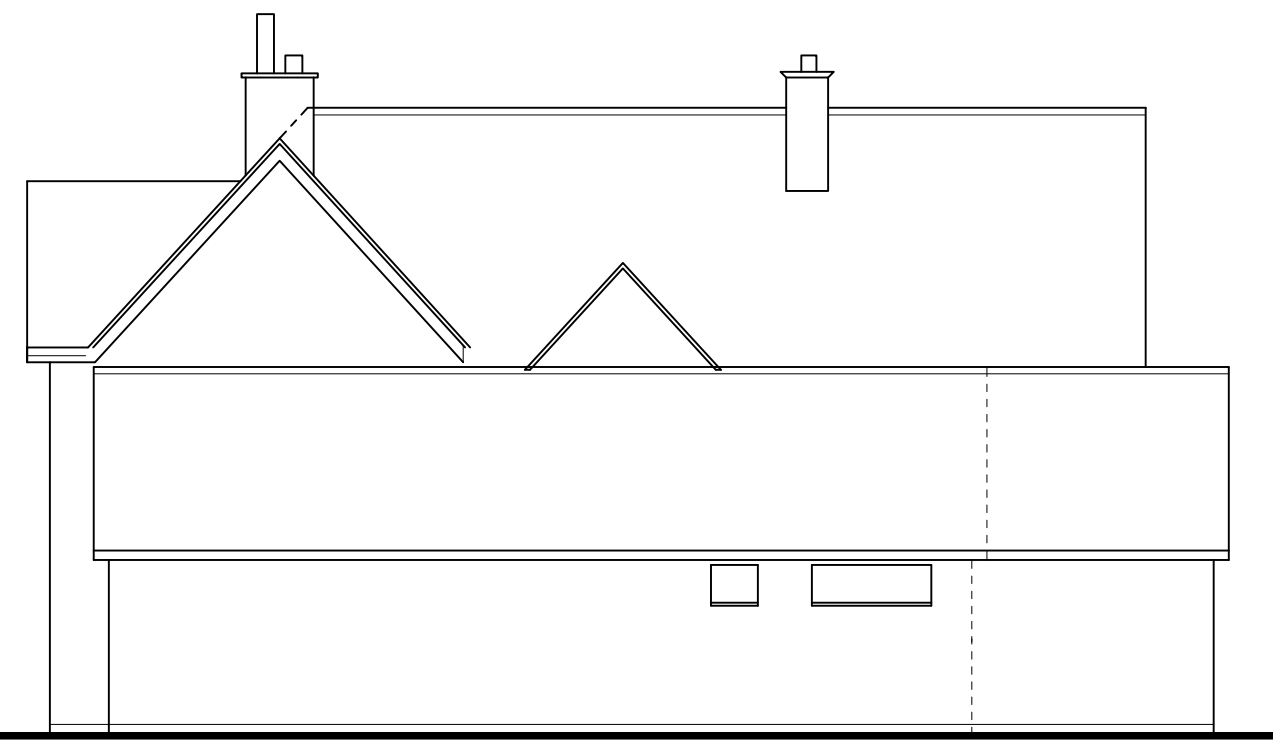




K 9GH '9@9J 5H=CB

← PROPOSED EXTENSION →



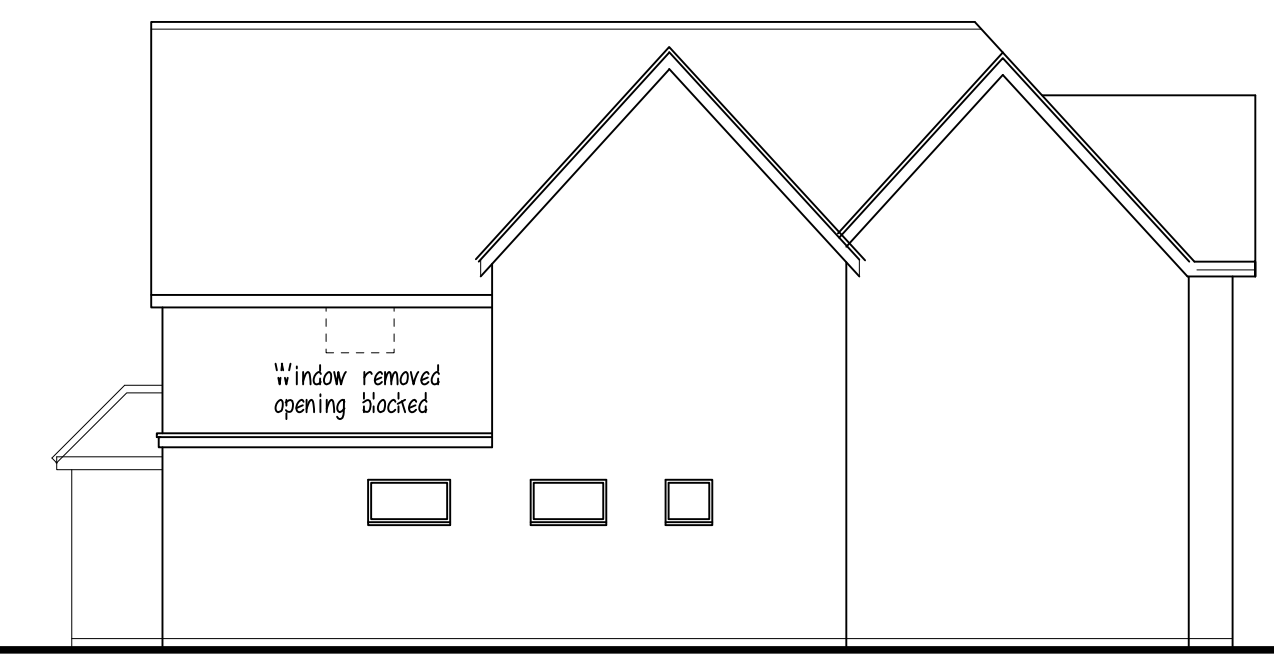
BCFH< '9@9J 5H=CB

← PROPOSED →

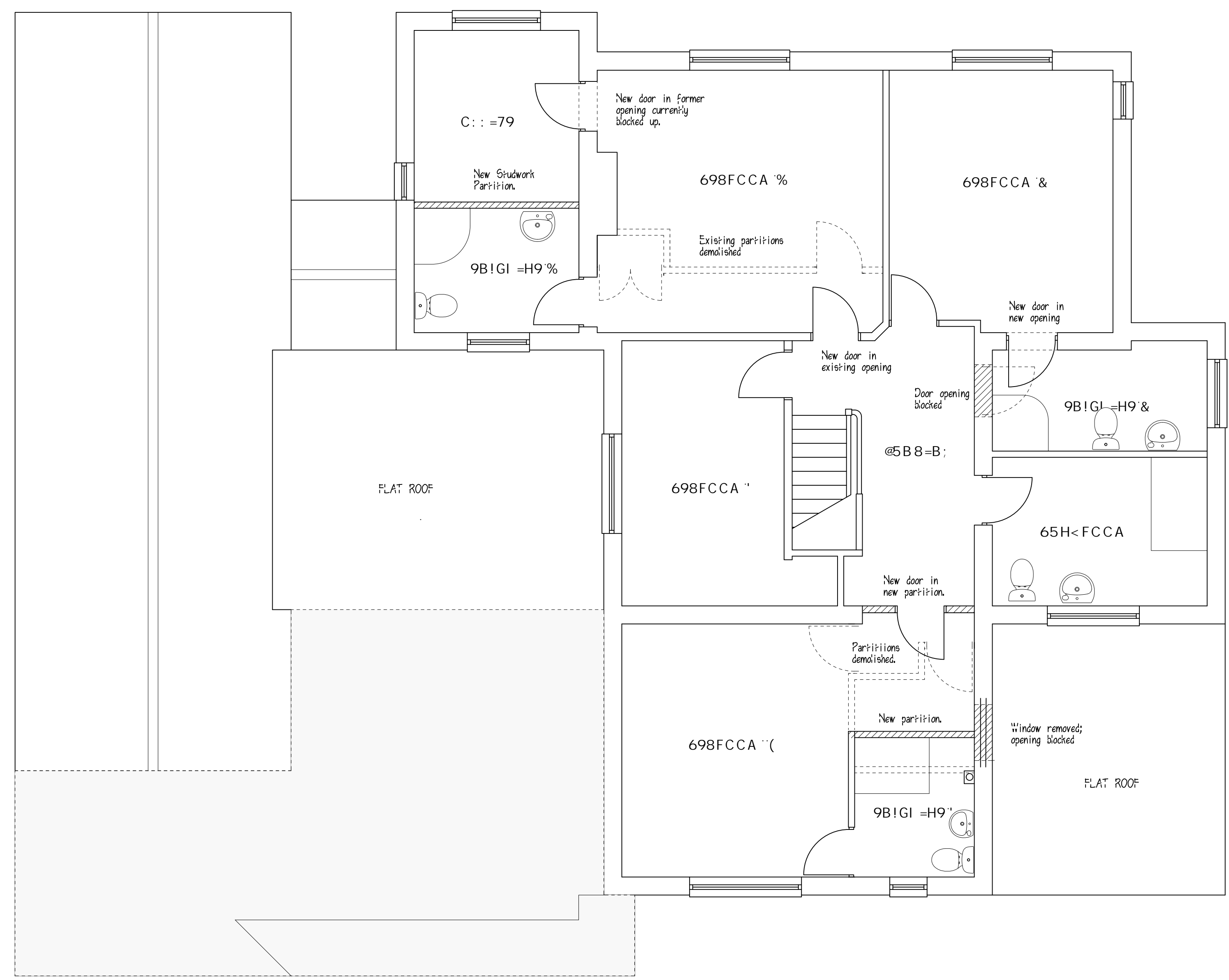


95GH '9@9J 5H=CB

New window in adapted former door opening

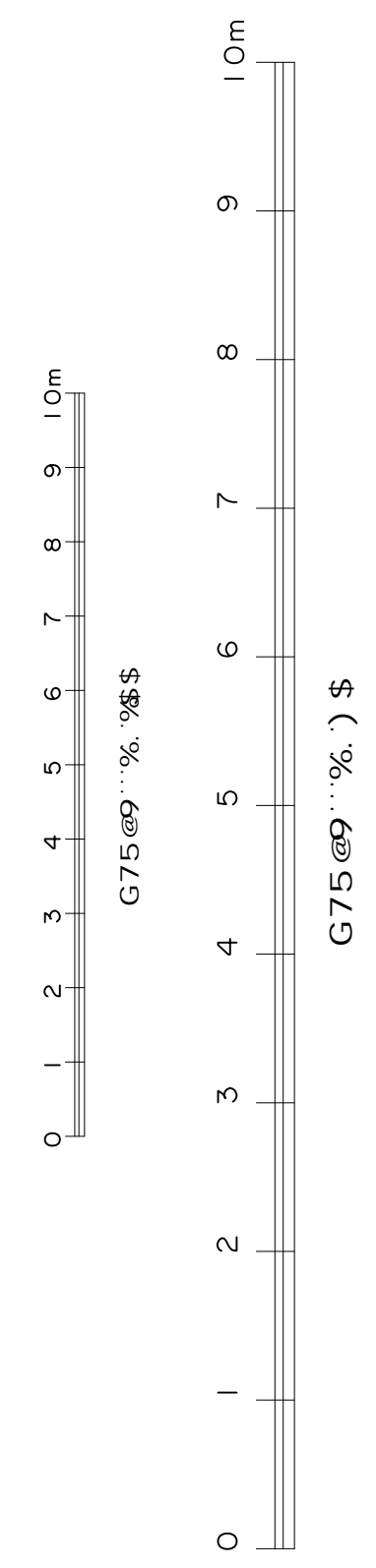


GCI H< '9@9J 5H=CB



DFCDG98: =FGH: @CCF'D@5B

9L H9FB 5@: =B=G< 9G''
 FCC:F98#6FCK B D@5-B H=@9G
 HC A 5H7< 9L=GH-B: ''
 K 5@G:D5-BH98 F9889F 5G
9L=GH-B: < C I G9''
 K =B8CK G: ''K <=H9' DJ 7 5G 9L=GH-B: ''
 6=: C @8G: ''K <=H9' DCK 89F 7C5H98 5@ A I =B=I A
 FK : CC8G: ''6@57? I DJ 7 5G 9L=GH-B:



5	' %\$#&'	D Ubbj b['g Va jggjcb'
	8 UHY	F Y j jcb

D> '5F7< =H97HI F5@G9FJ =79G
 (* '8F5M7CHH''FC58Z7< =G9@8CBZ
 GK =B8CB
 GB ('\$@G''
 H9@ '\$%- ' '(%) &
 A C 6 '\$+, (') '' ()
 9! a UJ 'd''d4 Vh]bhYfbYh'Vta

7 j j b h
 A F / ' AFG' 8' K < 95H7FC: H

Drc'VWHJHY
 FD=B9K CC8fi
 GH'98K 5F8G'FC58
 GHCK 'CB'H<9'K C@B
 ; @ (' %5K

8 F U k j b [H j h Y
 DFCDCG98
 : =FGH: @CCF'D@5B
 5B8 '9@9J 5H=CBG

GWYfjt %) \$ / % % \$ \$: 4 5 %

8 UHY > I @ & \$ &'	8 F U k b V m D
---------------------	-----------------

@ V e d n f j [\ h

Drc'VW#8F['Bc'
 6' ' & \$ & '\$ (5