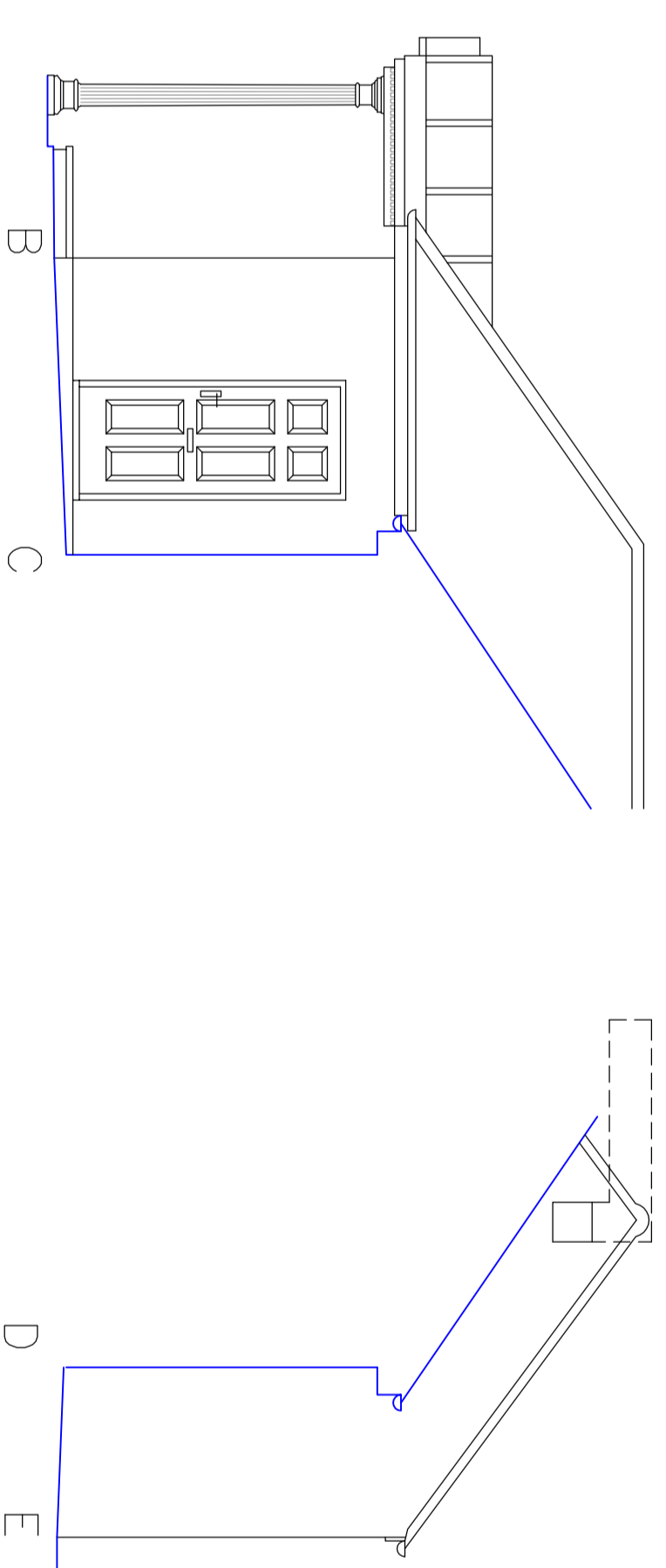


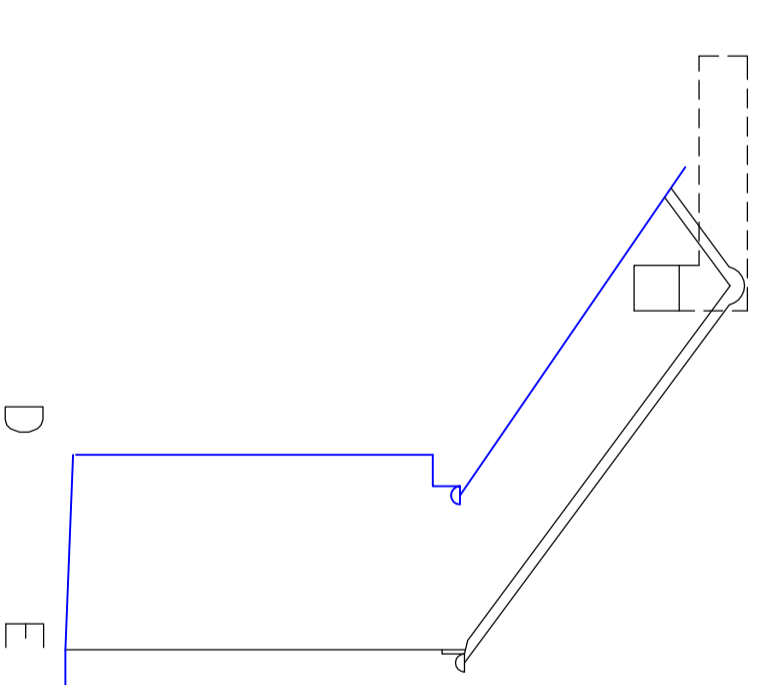
THE OLD PASSAGE
FRONT/SOUTH-WEST ELEVATION

SCALE 8.00m A3.0.



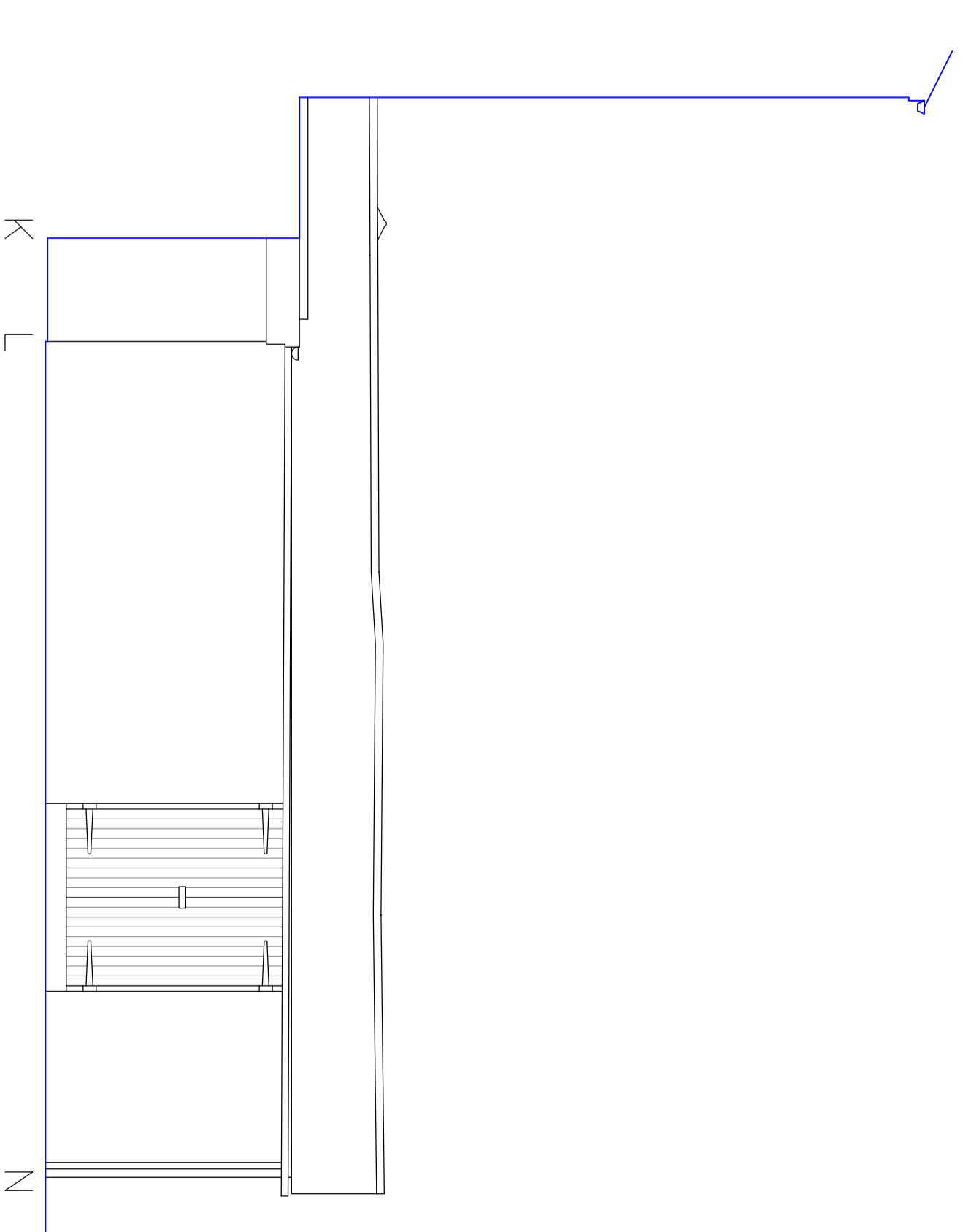
HIDDEN
SOUTH-EAST ELEVATION

SCALE 8.00m A3.0.



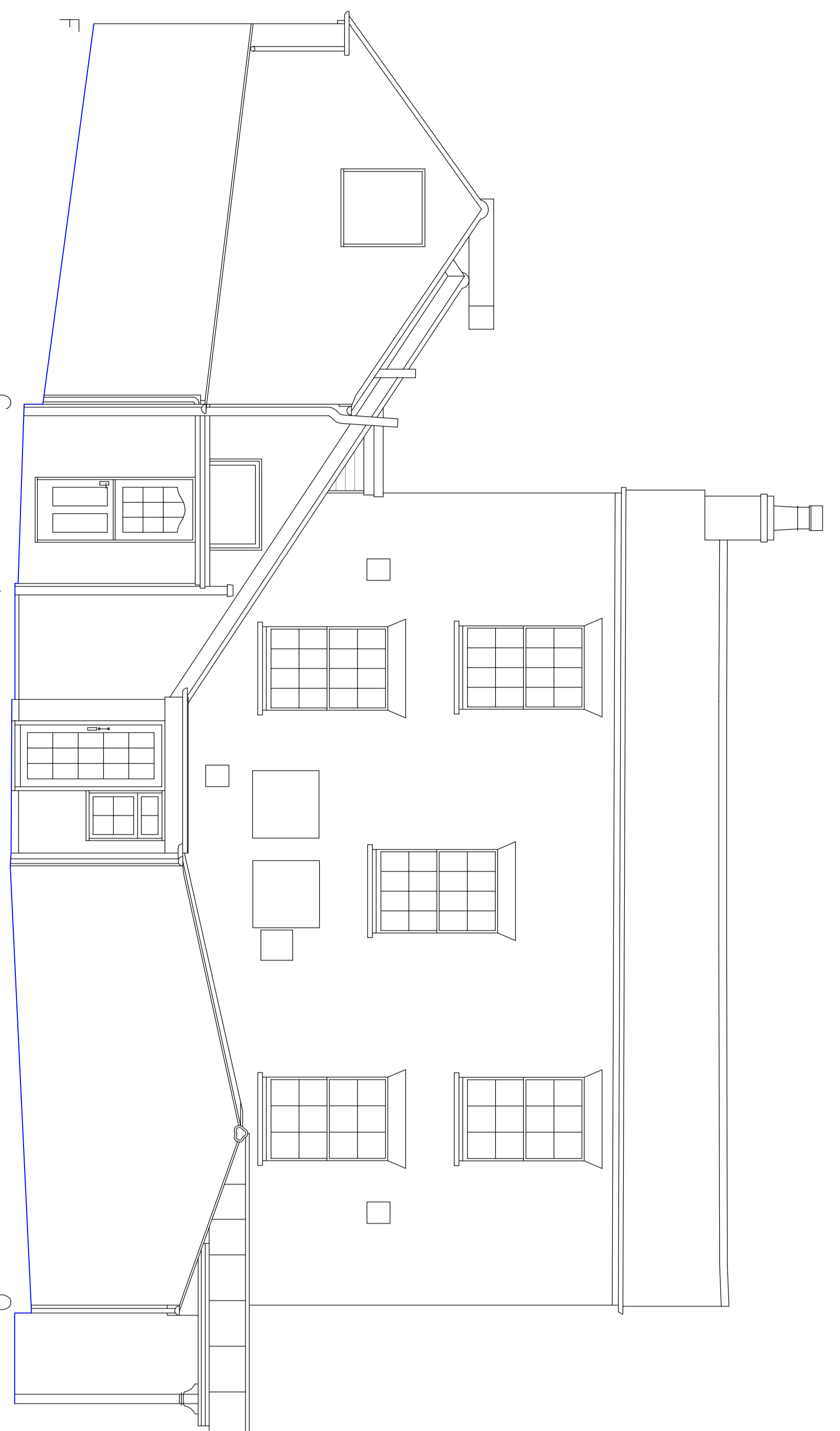
HIDDEN
NORTH-WEST ELEVATION

SCALE 8.00m A3.0.



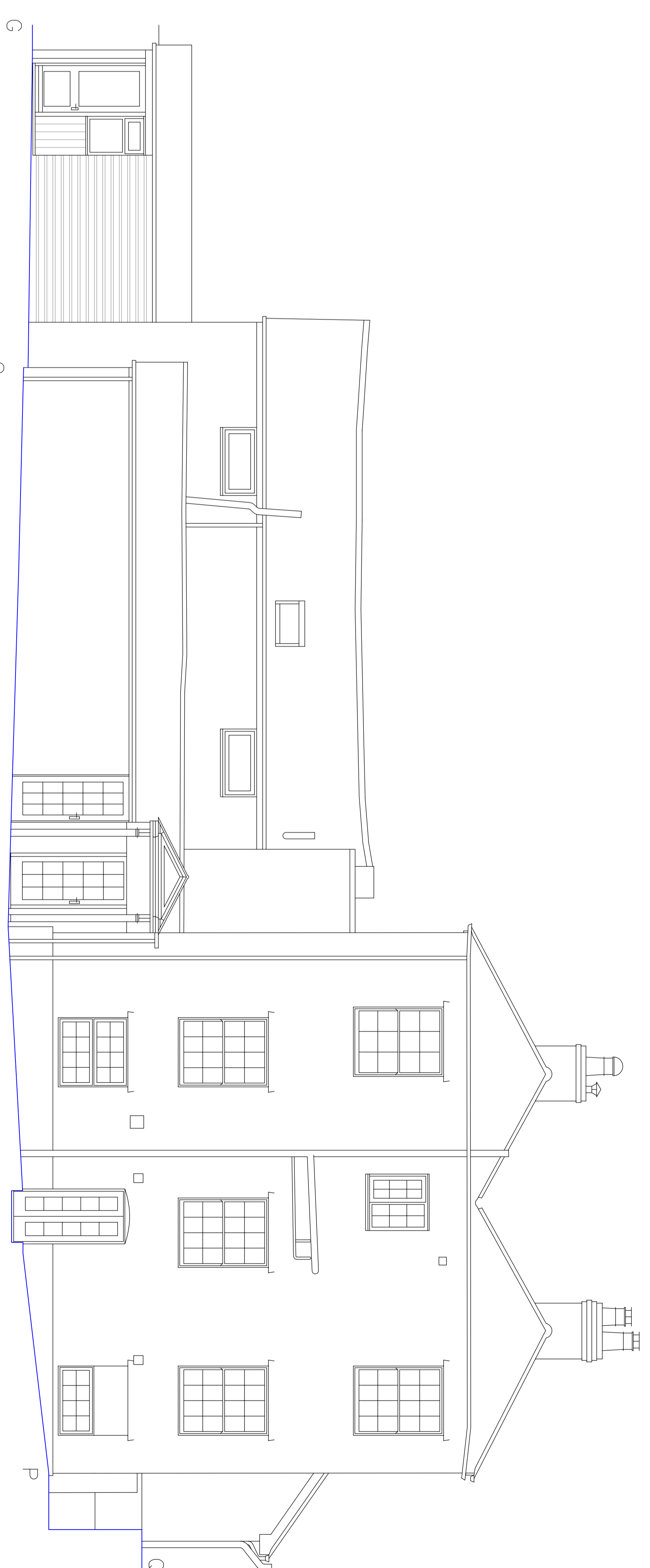
THE OLD PASSAGE
SOUTH-WEST ELEVATION

SCALE 8.00m A3.0.



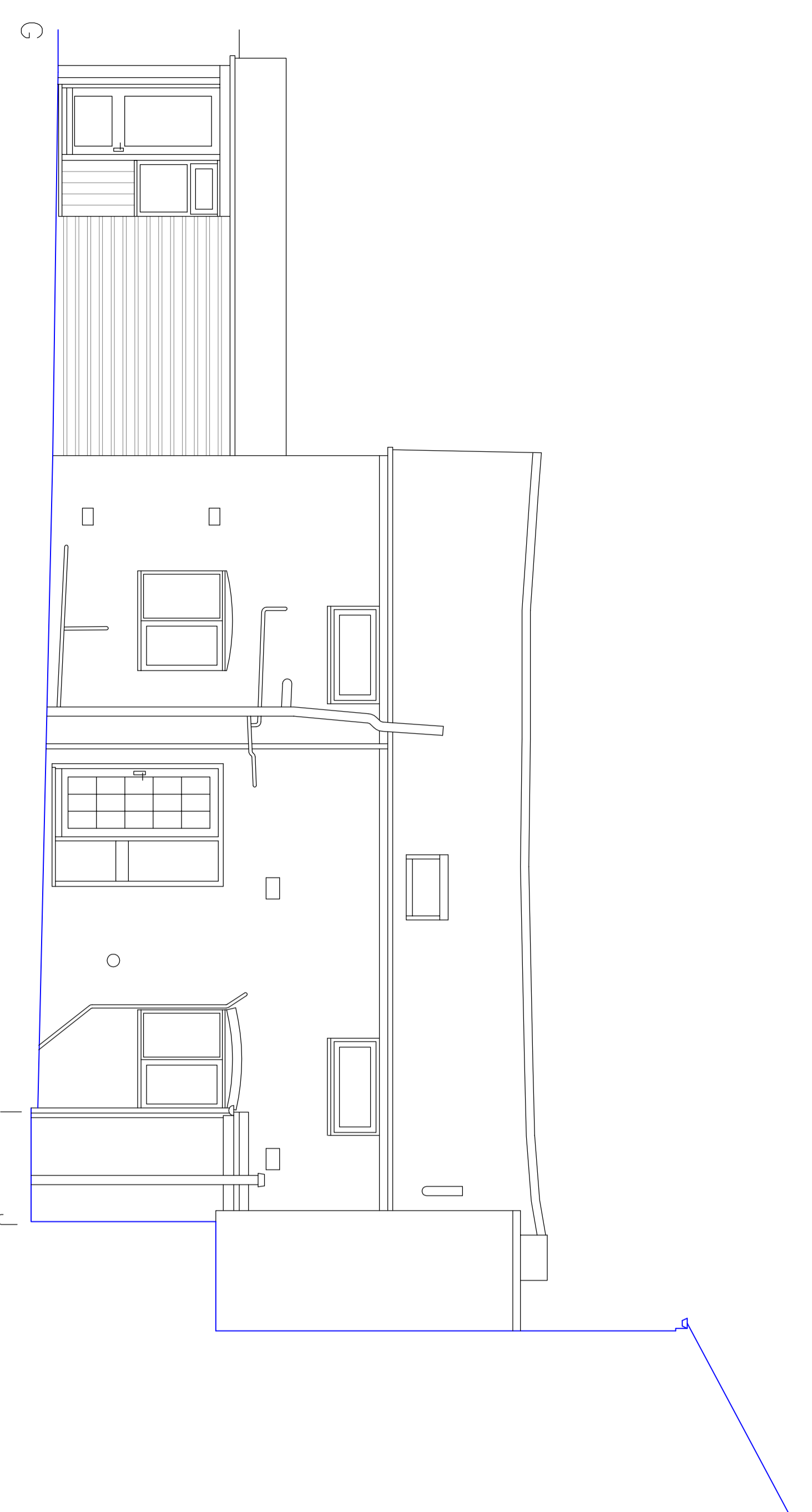
THE OLD PASSAGE
SIDE/SOUTH-EAST ELEVATION

SCALE 8.00m A3.0.



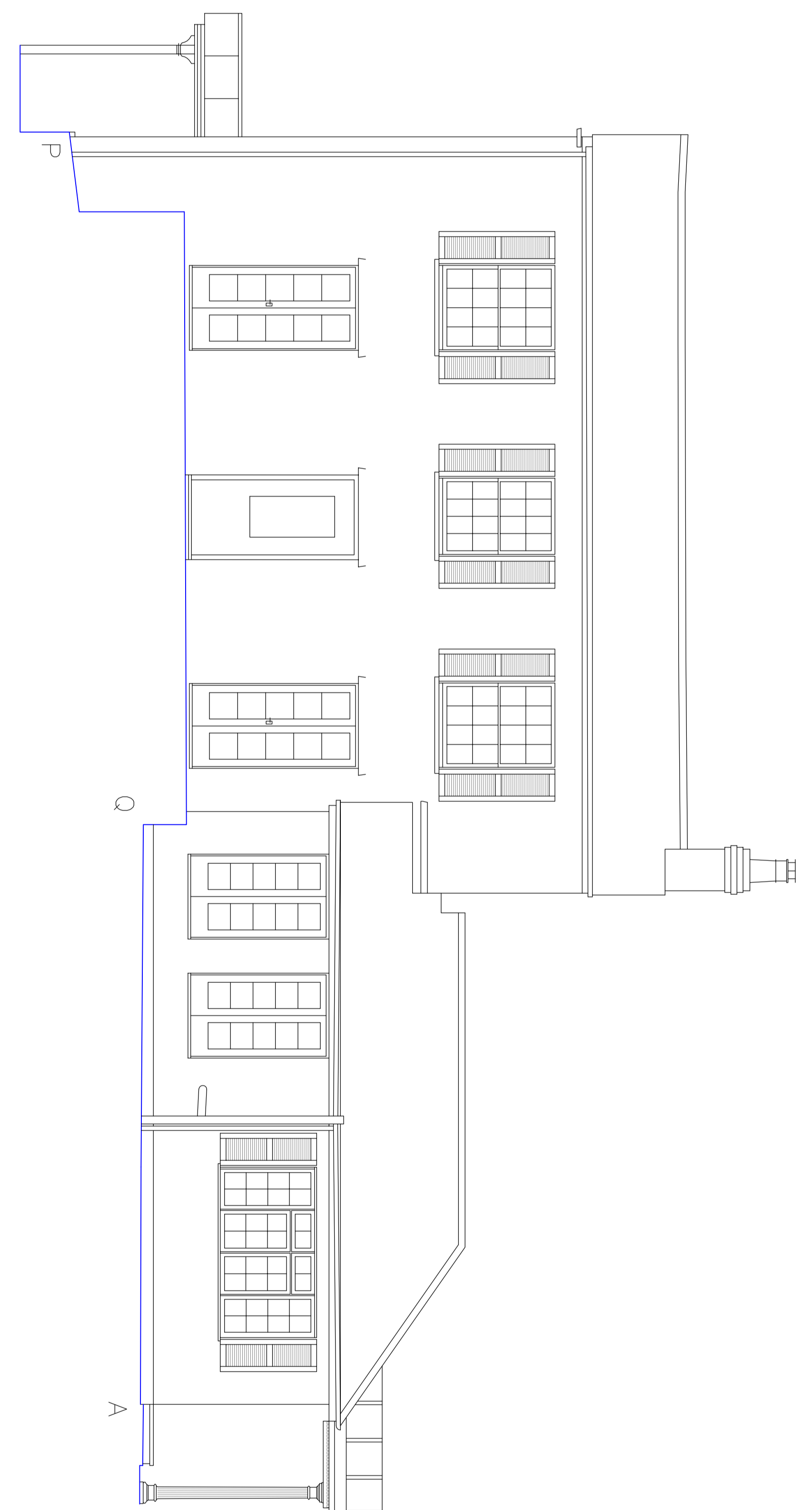
THE OLD PASSAGE
REAR/NORTH-EAST ELEVATION

SCALE 8.00m A3.0.



THE OLD PASSAGE
REAR/NORTH-EAST ELEVATION

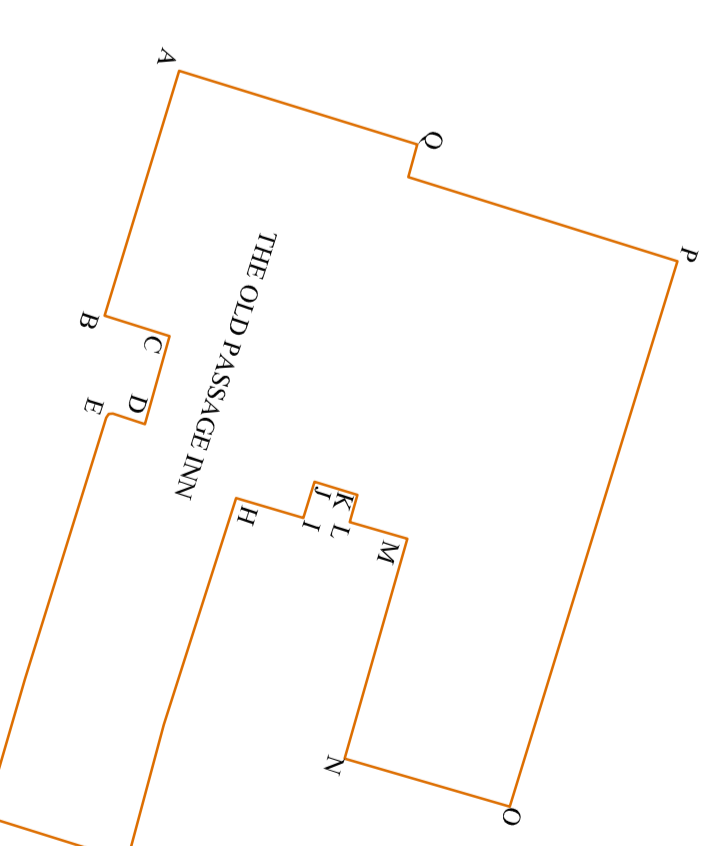
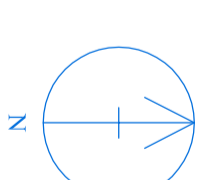
SCALE 8.00m A3.0.



THE OLD PASSAGE
SIDE/NORTH-WEST ELEVATION

SCALE 8.00m A3.0.

Elevation Key



NOTES
- Datum: Ordnance Survey level datum via OS Active OS Network
- All vertical dimensions to be checked prior to site work.

ADD HORNER LTD
LAND AND MEASURED BUILDING SURVEYORS
51 Bridge Street
Worcestershire
WR10 1AL
Telephone: 01386-555486 Telephone: 01752-83782
Website: www.addhorne.co.uk
E-mail: enquiries@addhorne.co.uk

Type	The Old Passage Inn, Passage Road, Alington, Gloucestershire GL2 7HE
Client	Quality Inns of Gloucestershire Limited
Date	February 2023
Revised	1: 20/01/2024
Revised	2: 15/02/2024
Revised	3: 15/02/2024
Revised	4: 15/02/2024
Revised	5: 15/02/2024
Revised	6: 15/02/2024
Revised	7: 15/02/2024
Revised	8: 15/02/2024
Revised	9: 15/02/2024
Revised	10: 15/02/2024
Revised	11: 15/02/2024
Revised	12: 15/02/2024
Revised	13: 15/02/2024
Revised	14: 15/02/2024
Revised	15: 15/02/2024
Revised	16: 15/02/2024
Revised	17: 15/02/2024
Revised	18: 15/02/2024
Revised	19: 15/02/2024
Revised	20: 15/02/2024
Revised	21: 15/02/2024
Revised	22: 15/02/2024
Revised	23: 15/02/2024
Revised	24: 15/02/2024
Revised	25: 15/02/2024
Revised	26: 15/02/2024
Revised	27: 15/02/2024
Revised	28: 15/02/2024
Revised	29: 15/02/2024
Revised	30: 15/02/2024
Revised	31: 15/02/2024
Revised	32: 15/02/2024
Revised	33: 15/02/2024
Revised	34: 15/02/2024
Revised	35: 15/02/2024
Revised	36: 15/02/2024
Revised	37: 15/02/2024
Revised	38: 15/02/2024
Revised	39: 15/02/2024
Revised	40: 15/02/2024
Revised	41: 15/02/2024
Revised	42: 15/02/2024
Revised	43: 15/02/2024
Revised	44: 15/02/2024
Revised	45: 15/02/2024
Revised	46: 15/02/2024
Revised	47: 15/02/2024
Revised	48: 15/02/2024
Revised	49: 15/02/2024
Revised	50: 15/02/2024
Revised	51: 15/02/2024
Revised	52: 15/02/2024
Revised	53: 15/02/2024
Revised	54: 15/02/2024
Revised	55: 15/02/2024
Revised	56: 15/02/2024
Revised	57: 15/02/2024
Revised	58: 15/02/2024
Revised	59: 15/02/2024
Revised	60: 15/02/2024
Revised	61: 15/02/2024
Revised	62: 15/02/2024
Revised	63: 15/02/2024
Revised	64: 15/02/2024
Revised	65: 15/02/2024
Revised	66: 15/02/2024
Revised	67: 15/02/2024
Revised	68: 15/02/2024
Revised	69: 15/02/2024
Revised	70: 15/02/2024
Revised	71: 15/02/2024
Revised	72: 15/02/2024
Revised	73: 15/02/2024
Revised	74: 15/02/2024
Revised	75: 15/02/2024
Revised	76: 15/02/2024
Revised	77: 15/02/2024
Revised	78: 15/02/2024
Revised	79: 15/02/2024
Revised	80: 15/02/2024
Revised	81: 15/02/2024
Revised	82: 15/02/2024
Revised	83: 15/02/2024
Revised	84: 15/02/2024
Revised	85: 15/02/2024
Revised	86: 15/02/2024
Revised	87: 15/02/2024
Revised	88: 15/02/2024
Revised	89: 15/02/2024
Revised	90: 15/02/2024
Revised	91: 15/02/2024
Revised	92: 15/02/2024
Revised	93: 15/02/2024
Revised	94: 15/02/2024
Revised	95: 15/02/2024
Revised	96: 15/02/2024
Revised	97: 15/02/2024
Revised	98: 15/02/2024
Revised	99: 15/02/2024
Revised	100: 15/02/2024